

**Note**

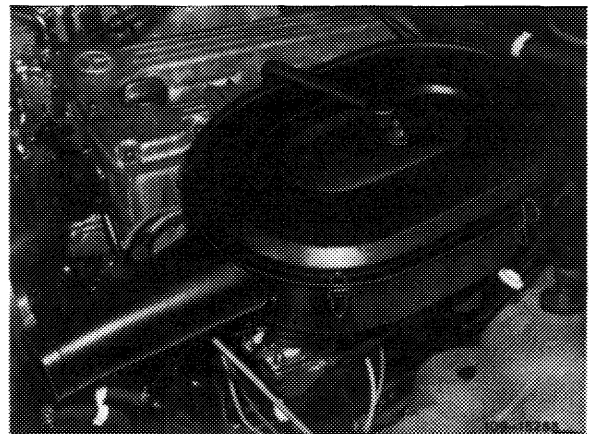
---

The air cleaner top is provided with a recess (arrow) for adjusting idle speed mixture.

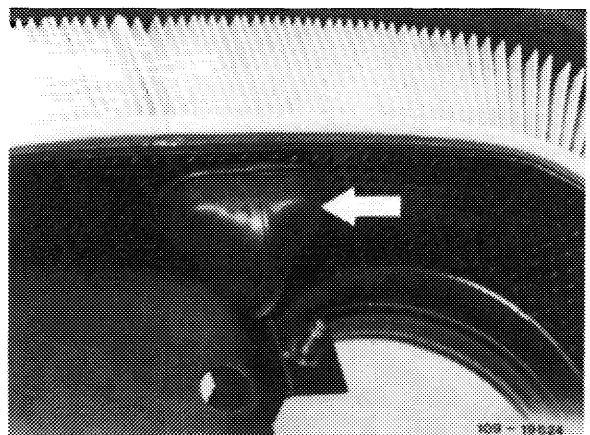
As a result, the air cleaner need no longer be removed for adjusting idle speed mixture.



On air cleaner 2nd version the air intake proceeds directly at air cleaner, the connecting hose is no longer required.



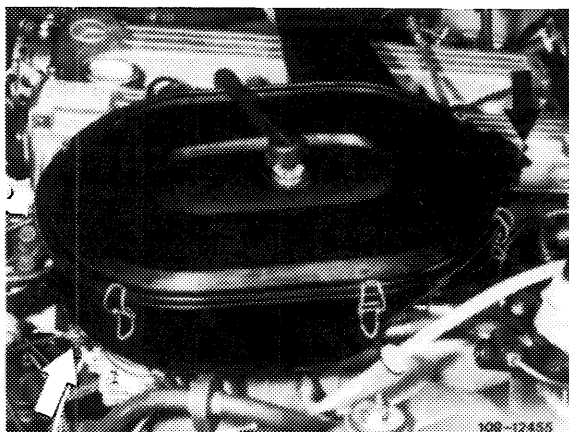
The connection for the decel shutoff valve is at air cleaner lower half.  
Air intake is by way of a rubber scoop (arrow) at clean air side.



## Removal

---

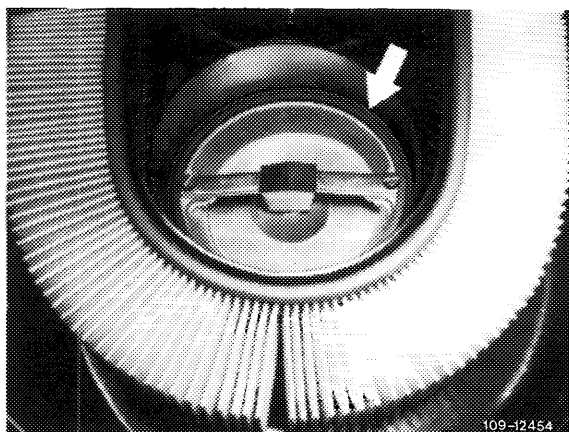
- 1 Unscrew both fastening nuts on vibration dampers.
- 2 Remove air cleaner, while pulling off contour hose for crankcase breather.



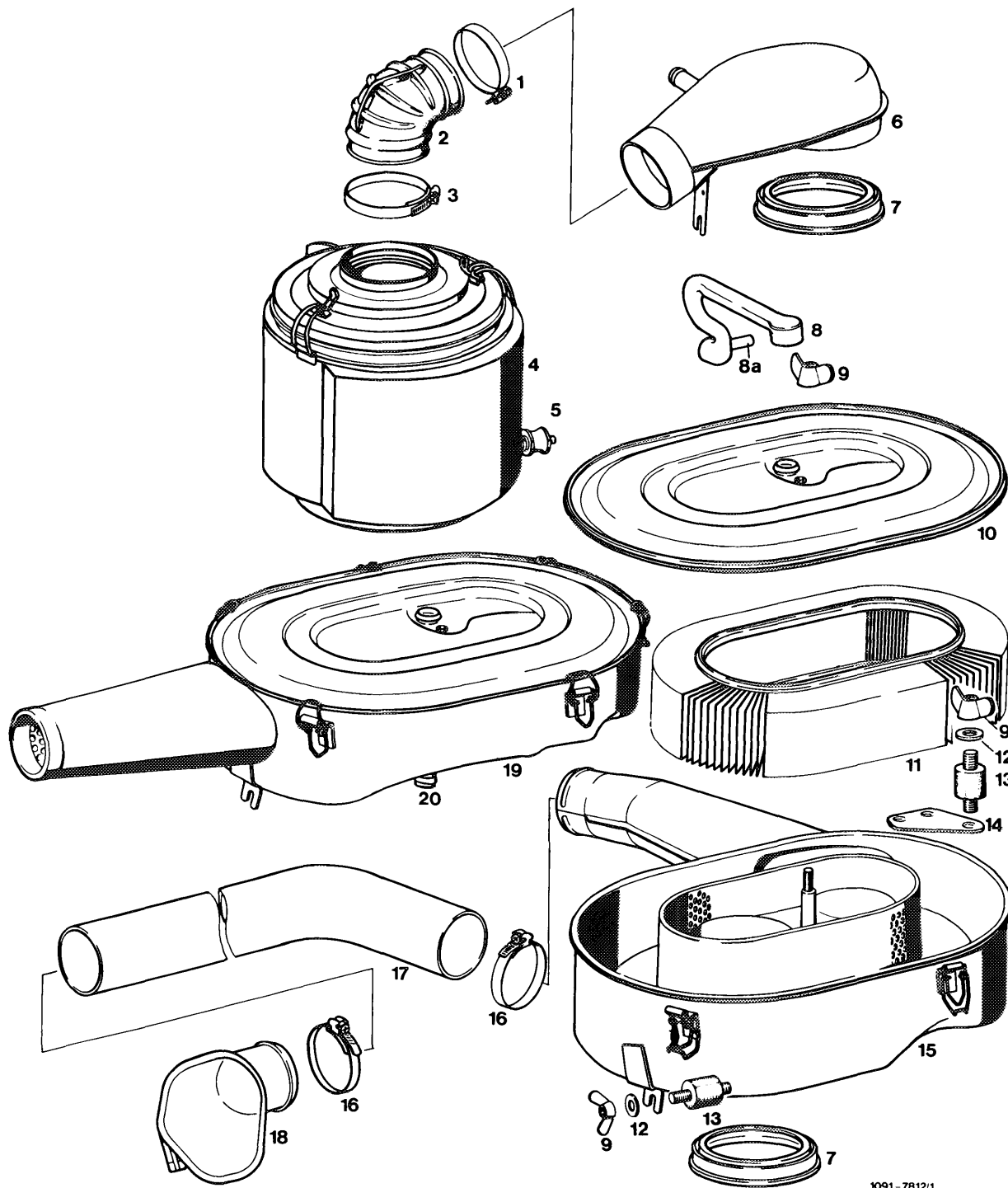
## Installation

---

- 3 Remove air cleaner cover.
- 4 Mount air cleaner. Pay attention to correct seat of sealing ring (arrow) between air flow sensor and air cleaner.
- 5 Mount air cleaner cover.



# Air cleaner



1091-7812/1

## Model 107

- 1 Hose clamp
- 2 Rubber scoop
- 3 Hose clamp
- 4 Air cleaner
- 5 Vibration damper
- 6 Intake pipe

## Models 116, 123, 126

- 7 Rubber sealing ring
- 8 Vent line
- 9 Wing nut
- 10 Air cleaner cover
- 11 Air cleaner element
- 12 Washer
- 13 Vibration damper

- 14 Holder
- 15 Air cleaner lower half 1st version
- 16 Hose clamp
- 17 Intake hose
- 18 Intake scoop
- 19 Air cleaner 2nd version
- 20 Connection for decel shutoff