

Model 107

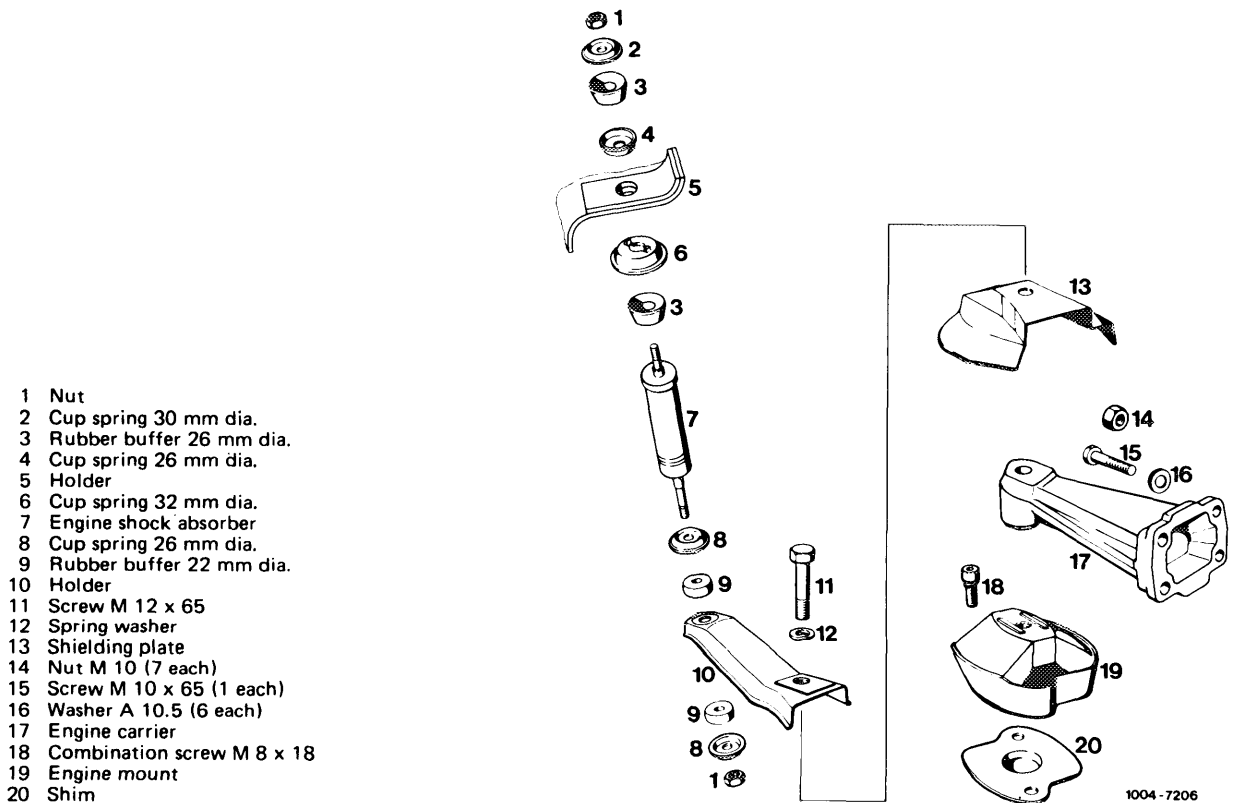
- 1 Unscrew screw (11).
- 2 Turn holder (10) and shielding plate (13) away in lateral direction.
- 3 Unscrew engine mount (19) from cross member.
- 4 Lift engine with pit lift at oil pan.

Note: Use wooden block to prevent damaging oil pan.

- 5 Remove engine mount together with shim (20).
- 6 For installation proceed vice versa.
- 7 Tighten screw (11) to 75 Nm.

Attention!

Check regulating linkage for function.



- 1 Nut
- 2 Cup spring 30 mm dia.
- 3 Rubber buffer 26 mm dia.
- 4 Cup spring 26 mm dia.
- 5 Holder
- 6 Cup spring 32 mm dia.
- 7 Engine shock absorber
- 8 Cup spring 26 mm dia.
- 9 Rubber buffer 22 mm dia.
- 10 Holder
- 11 Screw M 12 x 65
- 12 Spring washer
- 13 Shielding plate
- 14 Nut M 10 (7 each)
- 15 Screw M 10 x 65 (1 each)
- 16 Washer A 10.5 (6 each)
- 17 Engine carrier
- 18 Combination screw M 8 x 18
- 19 Engine mount
- 20 Shim

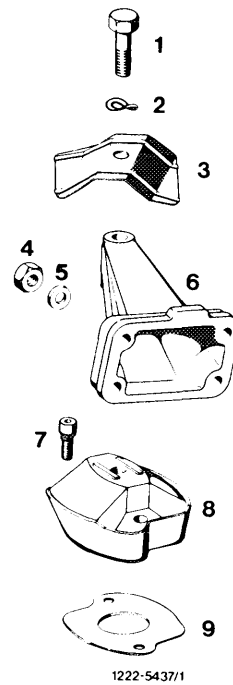
1004 - 7206

Model 114

- 1 Unscrew screw (1).
- 2 Lift engine with pit lift at oil pan.

Note: Use wooden block to prevent damaging oil pan.

- 3 Unscrew screws from engine carrier and remove engine mount with shim.
- 4 For installation proceed vice versa.
- 5 Tighten screw (1) to 75 Nm.

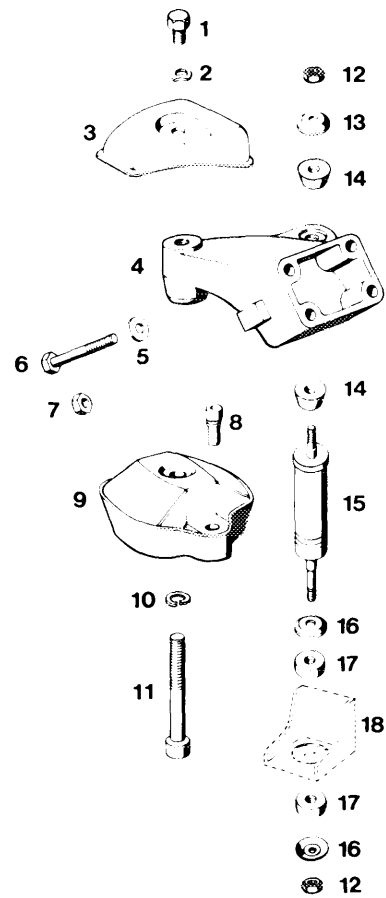
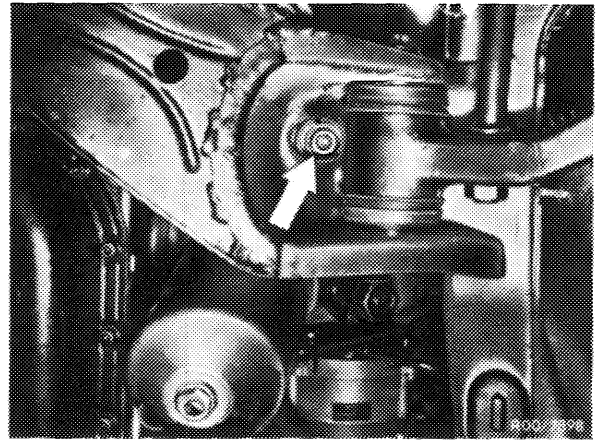


- 1 Screw M 12 x 55
- 2 Spring washer B 12
- 3 Shielding plate (right)
- 4 Nut M 10
- 5 Washer A 10.5
- 6 Engine carrier
- 7 Combination screw M 8 x 18
- 8 Engine mount
- 9 Shim

1222-5437/1

Model 116

- 1 Unscrew screw (11, arrow) from underside of vehicle.
 - 2 Unscrew nut (12) below on engine shock absorber.
 - 3 Lift engine with pit lift at oil pan.
- Note:** Use wooden block to prevent damaging oil pan.
- 4 Unscrew screws (8) and remove engine mount (9).
 - 5 For installation proceed vice versa.
 - 6 Tighten screw (11) to 75 Nm.



- 1 Screw
- 2 Spring washer
- 3 Shielding plate (right)
- 4 Engine carrier
- 5 Washer A 10.5 (6 each)
- 6 Screw M 10 x 65 (1 each)
- 7 Nut M 10 (7 each)
- 8 Combination screw M 8 x 18
- 9 Engine mount
- 10 Snap ring 12
- 11 Screw M 12 x 40
- 12 Nut M 6
- 13 Cup spring 30 mm dia.
- 14 Rubber buffer 26 mm dia.
- 15 Engine shock absorber
- 16 Cup spring 26 mm dia.
- 17 Rubber buffer 22 mm dia.
- 18 Holder

1222 5439.1

Model 123

1 Unscrew screw (11, arrow) from underside of vehicle.

2 Unscrew nut below on engine shock absorber.

3 Lift engine with pit lift at oil pan.

Note: Use wooden block to prevent damaging oil pan.

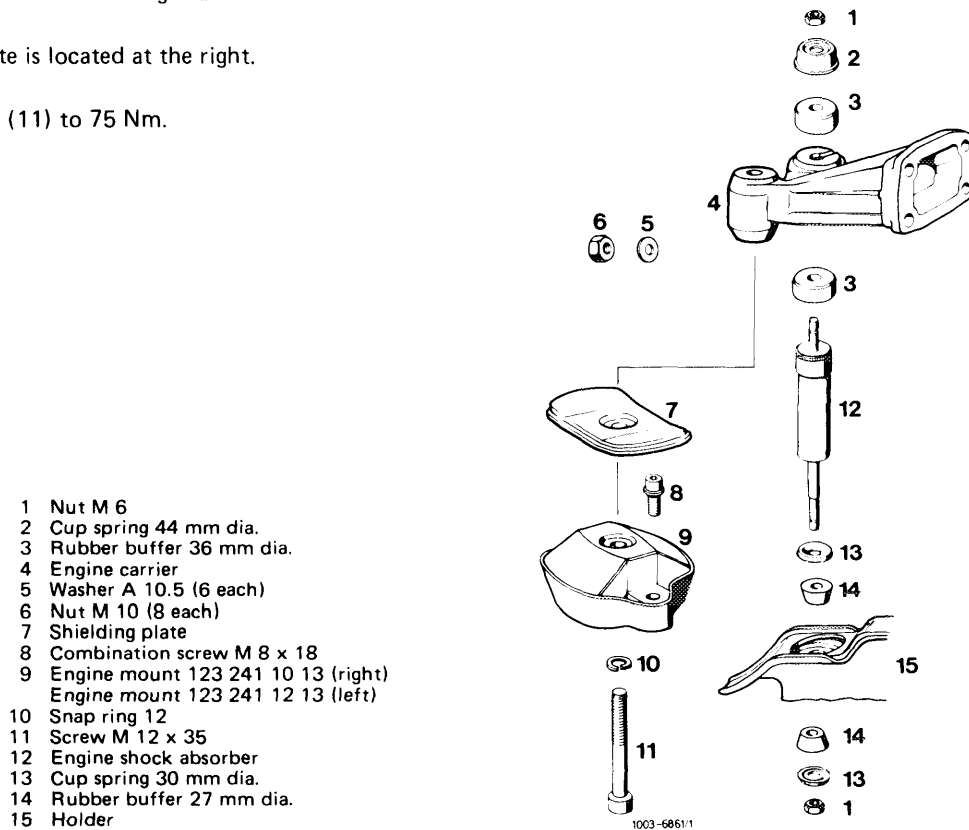
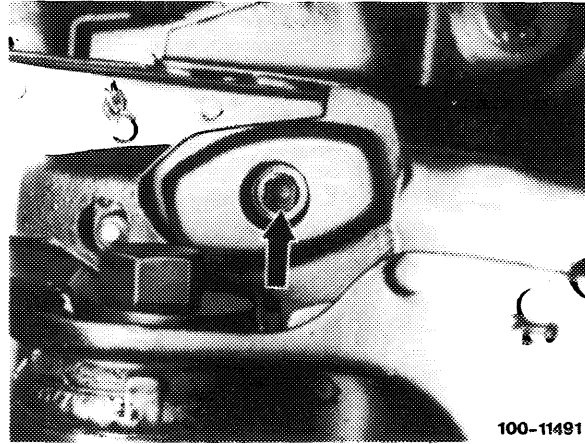
4 Unscrew screws (8) and remove engine mount.

5 For installation proceed vice versa.

Note: Engine mounts left and right are different.

The shielding plate is located at the right.

6 Tighten screw (11) to 75 Nm.



- 1 Nut M 6
- 2 Cup spring 44 mm dia.
- 3 Rubber buffer 36 mm dia.
- 4 Engine carrier
- 5 Washer A 10.5 (6 each)
- 6 Nut M 10 (8 each)
- 7 Shielding plate
- 8 Combination screw M 8 x 18
- 9 Engine mount 123 241 10 13 (right)
Engine mount 123 241 12 13 (left)
- 10 Snap ring 12
- 11 Screw M 12 x 35
- 12 Engine shock absorber
- 13 Cup spring 30 mm dia.
- 14 Rubber buffer 27 mm dia.
- 15 Holder

Model 126

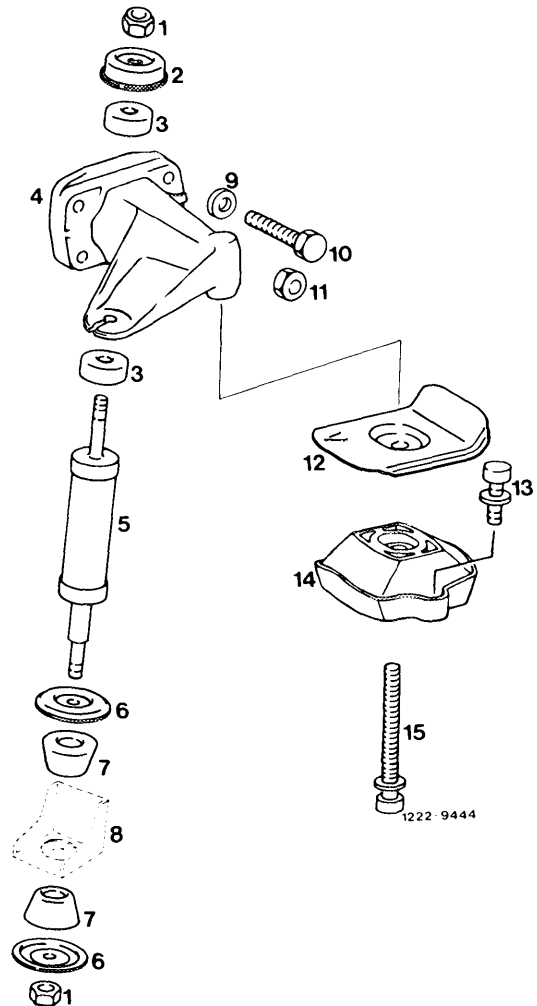
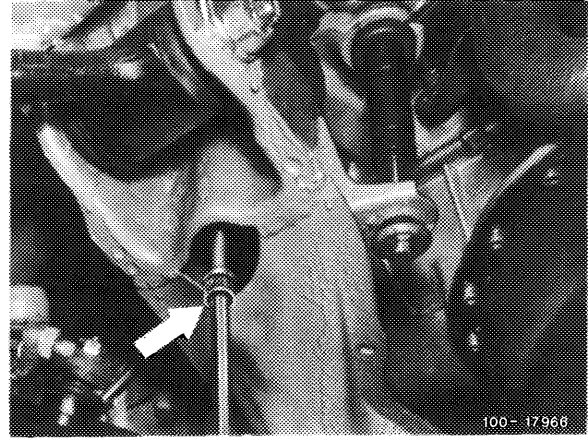
- 1 Unscrew screw (15, arrow) from underside of vehicle.
- 2 Unscrew nut (1) below on engine shock absorber.
- 3 Lift engine with pit lift at oil pan.

Note: Use wooden block to prevent damaging oil pan.

- 4 Unscrew screws (13) and remove engine mount.
- 5 For installation proceed vice versa.

Note: The shielding plate is located at the left.

- 6 Tighten screw (15, arrow) to 70 Nm.



- 1 Nut M 6
- 2 Cup spring
- 3 Rubber buffer
- 4 Engine carrier
- 5 Engine shock absorber
- 6 Cup spring
- 7 Rubber buffer
- 8 Holder
- 9 Washer
- 10 Screw
- 11 Nut
- 12 Shielding plate
- 13 Combination screw
- 14 Engine mount
- 15 Screw