

**Model 107**

**Attention!**

For removal of engine mount (4) do not unscrew closing plate (10 or 12).

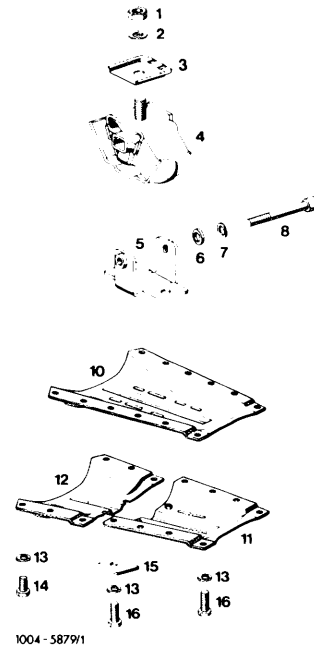
Attach engine mount free of tension to closing plate.

After installing engine mount, run engine at idle for a short period with adjusting screw released. With engine stopped, tighten adjusting screw (8) to 40 Nm.

**Attention!**

Check regulating linkage for function.

- |                            |   |
|----------------------------|---|
| 1 Nut M 12 x 1.5           | 10 Closing plate manual transmission    |
| 2 Spring washer B 12       | 11 Closing plate automatic transmission |
| 3 Holding plate            | 12 Closing plate automatic transmission |
| 4 Holder                   | 13 Snap ring A 8                        |
| 6 Washer 8.4               | 14 Screw M 8 x 20                       |
| 7 Snap ring A 8            | 15 Shim                                 |
| 8 Adjusting screw M 8 x 75 | 16 Screw M 8 x 32                       |



**Model 114**

**Note:** The engine mount for automatic transmission and for 5-speed transmission is provided with a stop.

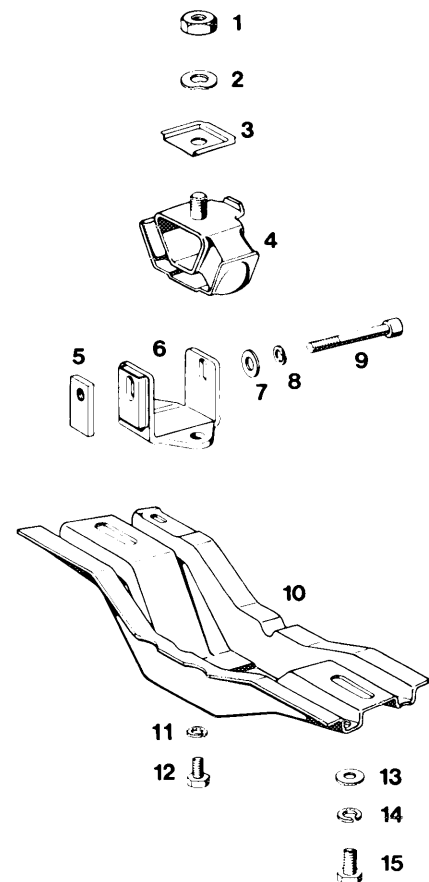
For removing engine mount (4), do not unscrew engine carrier (10).

Following installation of engine mount, run engine for a short period at idle with adjusting screw (9) released. With engine stopped, tighten adjusting screw (9) to 40 Nm.

**Attention!**

Shims between engine carrier and frame floor are decisive for alignment of propeller shafts and should be added again at the same spot.

- |                      |                            |
|----------------------|----------------------------|
| 1 Nut M 12 x 1.5     | 9 Adjusting screw M 8 x 75 |
| 2 Spring washer B 12 | 10 Engine carrier          |
| 3 Holding plate      | 11 Snap ring B 10          |
| 4 Engine mount       | 12 Screw M 8 x 12          |
| 5 Threaded plate     | 13 Washer                  |
| 6 Holder             | 14 Snap ring B 10          |
| 7 Washer             | 15 Screw M 10 x 25         |
| 8 Snap ring          |                            |

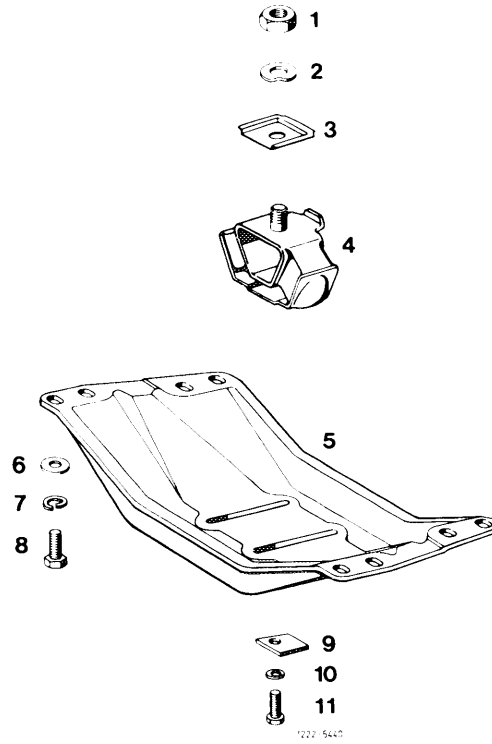


## Model 116

### Attention!

For removal of engine mount (4) do not unscrew engine carrier (5).

Attach engine mount free of tension to engine carrier.



- |                  |                   |
|------------------|-------------------|
| 1 Nut M 12 x 1.5 | 7 Snap ring A 8   |
| 2 Spring washer  | 8 Screw M 8 x 20  |
| 3 Holding plate  | 9 Shim            |
| 4 Engine mount   | 10 Snap ring A 8  |
| 5 Engine carrier | 11 Screw M 8 x 18 |
| 6 Washer 8.4     |                   |

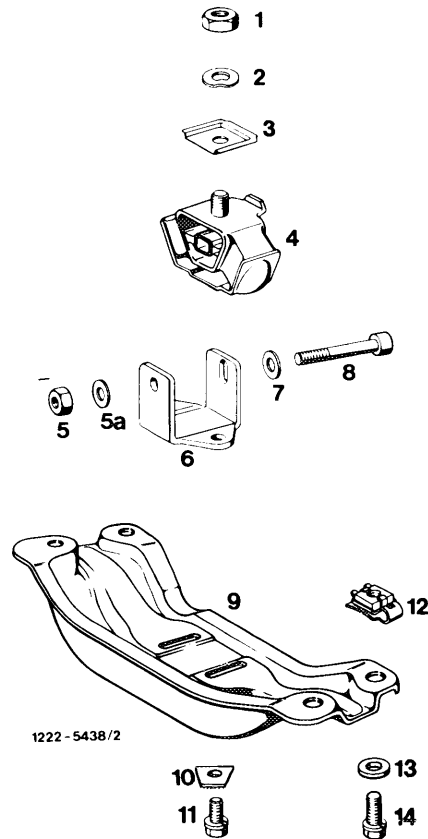
## Model 123

### Attention!

For removal of engine mount (4) do not unscrew engine carrier (9).

Upon installation of engine mount run engine at idle for a short period with adjusting screw released.

With engine stopped, tighten adjusting screw (8) to 40 Nm.



- |                              |                                |
|------------------------------|--------------------------------|
| 1 Nut 12 x 1.5               | 9 Engine carrier               |
| 2 Spring washer B 12         | 10 Washer                      |
| 3 Holding plate              | 11 Combination screw M 8 x 18  |
| 4 Engine mount 123 240 22 18 | 12 Cage nut 123 990 05 91      |
| 5 Nut                        | 13 Washer                      |
| 5a Washer                    | 14 Combination screw M 10 x 22 |
| 6 Holder                     |                                |
| 7 Washer                     |                                |
| 8 Screw M 8 x 75             |                                |

## Model 126

### Attention!

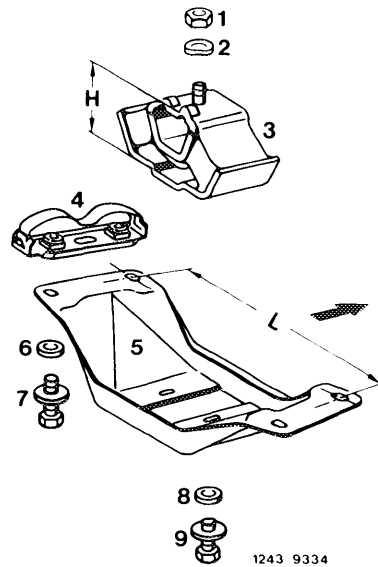
To remove engine mount (3) do not unscrew engine carrier (5).

Engine mount (3) and engine carrier (5) are different for manual and automatic transmission.

Differences:

Transmission	manual	automatic
Engine mount	H = 62–64 mm	H = 67–69 mm
Engine carrier	L = 356 mm	L = 301 mm

When installing engine mount (3) attach free of tension to engine carrier (5) with oblong holes by means of screws (9).



- |   |                               |
|---|-------------------------------|
| 1 Nut M 12 x 1.5  | 5 Engine carrier              |
| 2 Spring washer   | 6 Washer 10.5                 |
| 3 Engine mount<br>manual 123 240 25 18<br>automatic 116 240 04 18 | 7 Combination screw M 10 x 22 |
| 4 Nut holder  | 8 Washer                      |
|   | 9 Combination screw M 8 x 15  |