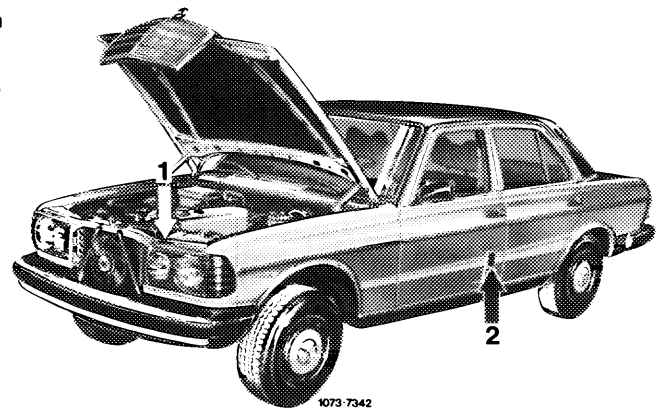


The various emission control systems of USA version vehicles are identified by respective information plate (arrow 1) on cross member in front of radiator.



**Recognizing emission control system from color of information plate — basic color/lettering**

Model year	Federal version	California version	Federal version high altitudes	Federal version tourist vehicles	California version tourist vehicles
1974	black/silver	black/silver	—	—	—
1975		green/silver	—	black/silver	yellow/silver
1976					
1977	black/white	yellow/black	red/black	black/white	yellow/black
1978			—		

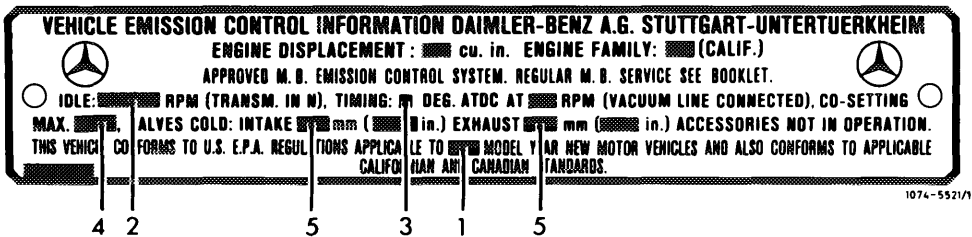
**The information plate shows:**

1. MODEL YEAR
2. IDLE . . . RPM
3. TIMING . . . DEG . AT . . . RPM
4. Emission value at idle without air injection max. . . .

CO-SETTING MAX. . . . AIR INJECTION DISCONNECTED

5. Valve clearance: INTAKE (. . . in)  
EXHAUST (. . . in)

**Information plate**



**Information plate on doorpost of driver's door**

This plate shows whether vehicle is provided with or without catalystr.

