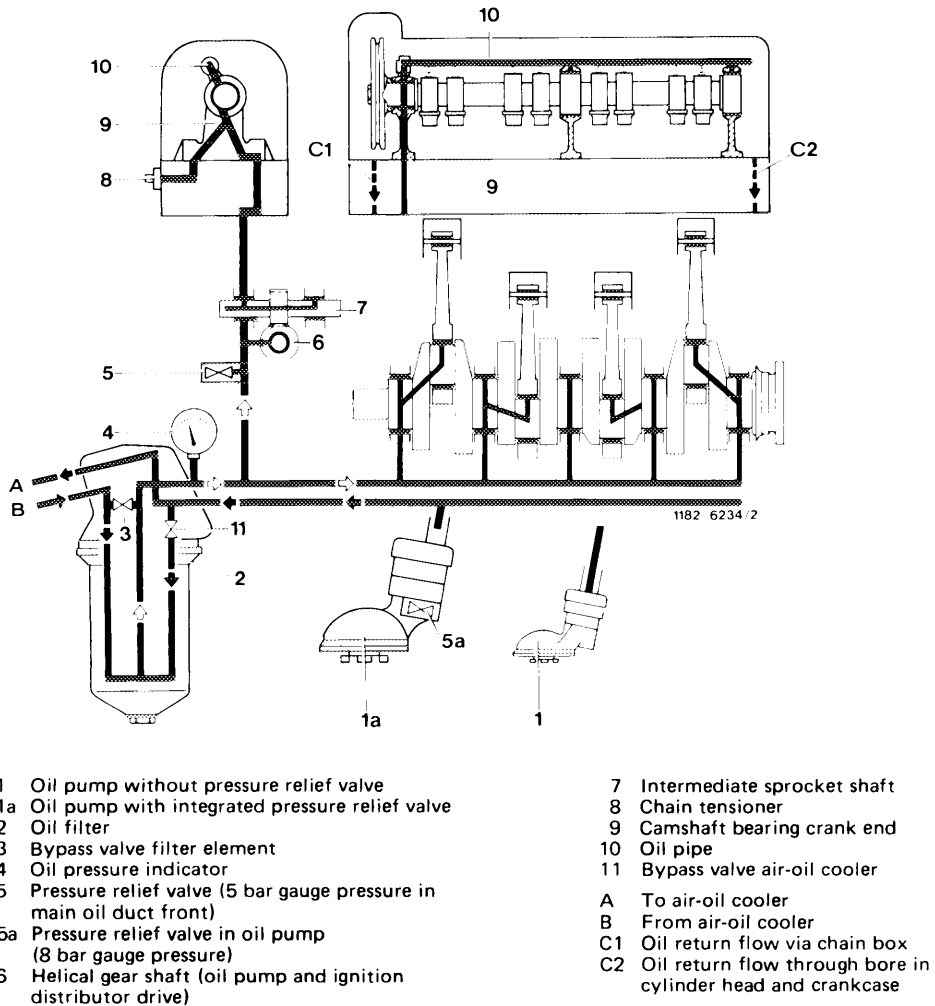


Oil circuit



Note

Only model 115.017 up to chassis end No. 025 505 is provided with an air-oil cooler.

## Oil pressure

---

At operating temperature, the oil pressure at idle may drop to 0.5 bar gauge pressure.

Upon acceleration, the oil pressure should immediately rise again and attain at least 3 bar gauge pressure at 3000/min.

## Pressure relief valves

---

The pressure relief valve has been an integral part of the oil pump for a given period (refer to table).

On vehicles with lower or higher chassis end No., the pressure relief valve is installed in main oil duct at front end.

### Installation of oil pump (1a) with integrated pressure relief valve

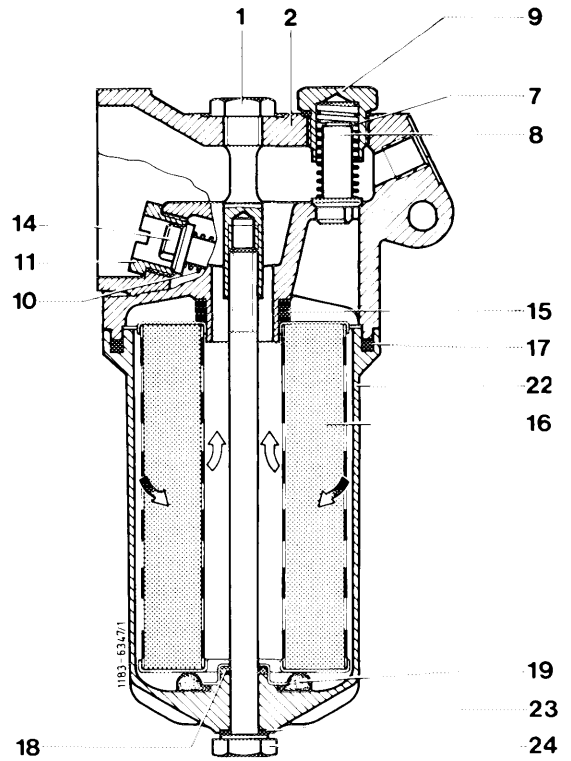
Model	Engine	Engine end No.		Chassis end No.
		manual transmission	automatic transmission	
115.015	115.923	166 003–225 337	031 861–042 929	231 355–310 734
	115.926	010 646–019 493	000 459–000 825	
115.017	115.951	014 362–055 002	008 430–030 626	022 155–084 860
123.023	115.954	000 001–005 217	000 001–003 284	000 001–008 420

### Opening pressures of bypass and oil pressure relief valves

	bar gauge pressure
Bypass valve filter element	3.5
Bypass valve air-oil cooler	1.5
Pressure relief valve in oil pump	8
Pressure relief valve in main oil duct front end	5

Engine 115.951 with air-oil cooler

- 1 Holding screw (glued-in, do not release)
- 2 Oil filter top
- 7 Compression spring
- 8 Valve cone bypass valve oil filter element
- 9 Closing plug
- 10 Compression spring
- 11 Valve seat ring bypass valve air-oil cooler
- 14 Valve cone bypass valve air-oil cooler
- 15 Sealing ring
- 16 Oil filter element
- 17 Sealing ring
- 18 Sealing ring
- 19 Sealing ring
- 22 Oil filter housing
- 23 Sealing ring
- 24 Central screw



Engines 115.923/926/938/939/954 and 115.951 without air-oil cooler

- 2 Oil filter top
- 7 Compression spring
- 8 Valve cone bypass valve oil filter element
- 9 Closing plug
- 15 Sealing ring
- 16 Oil filter element
- 17 Sealing ring
- 18 Sealing ring
- 19 Sealing ring
- 22 Oil filter housing
- 23 Sealing ring
- 24 Central screw
- a Connection to oil pressure indicator engines 115.938/939/954
- b Connection to oil pressure indicator engines 115.923/926/951

