


## 22–210 Removal and installation of engine mount

---

Tightening torques		Nm
Screws for engine carrier to engine mount front (model 123)	M 12	70
	M 10	40
Screws for engine mount on front axle carrier (model 115)		30
Screws for engine mount on engine carrier rear		30
Adjusting screw for rear engine mount (model 123)		40
Adjusting screw for rear engine mount (model 115)		30

### Special tools

Torque wrench with inserting ratchet, 1/2" square, 25–130 Nm		001 589 66 21 00
Torque wrench with inserting ratchet, 1/2" square, 40–200 Nm		001 589 67 21 00

### Engine mount front

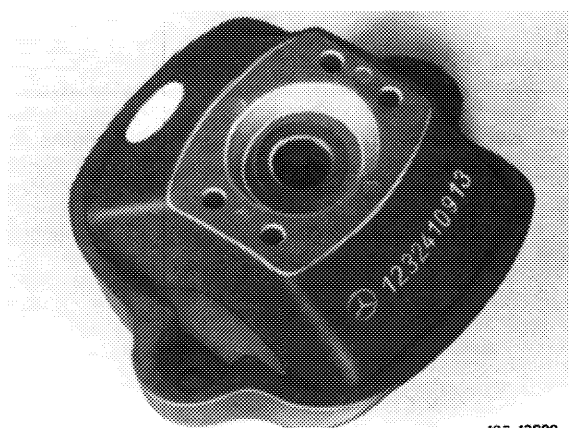
#### Note:

---

The engine mounts differ with regard to Shore tightness.

For differentiation, a colored dot is applied on engine mount in addition to part number.

Engine mounts of model 115 cannot be installed on model 123 or vice versa.



100-13900

Model	Version	Engine mount left Part no.	Engine mount right Part no.
115.015	1	115 223 14 12 (white dot)	115 241 07 13 (two yellow dots)
	2		115 241 07 13 (two yellow dots)
115.017	1	115 223 14 12 (white dot)	115 241 07 13 (two yellow dots)
	2	115 241 01 13 (two white dots)	115 241 07 13 (two yellow dots)
115.017 (USA)	1	115 241 01 13 (two white dots)	115 241 07 13 (two yellow dots)
	2		107 241 09 13 (yellow dot)
123.020 123.023/043/083	1	123 241 08 13 (yellow dot)	123 241 27 13 (blue dot)
	2		123 241 08 13 <sup>1)</sup> (yellow dot)
123.023 (USA)	1		123 241 27 13 (blue dot)

1) On vehicles with automatic transmission or air conditioning, engine mount, part no. 123 241 09 13, is installed at the right.

## Model 115

### Removal

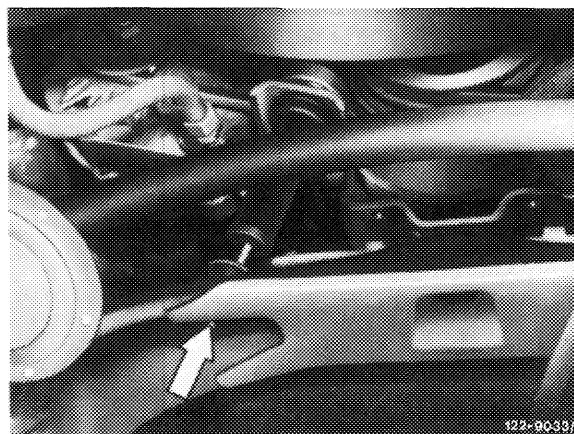
1 Unscrew screws (20) for engine carrier on engine mount from above.

2 On model 115.015, loosen engine stop. For this purpose, unscrew nut (32) and pull out screw.

3 On model 115.017, unscrew nut on engine shock absorber below (arrow). For this purpose, apply counterhold to piston rod by means of a screw driver at spot provided.

4 Raise engine with pit lift at oil pan.

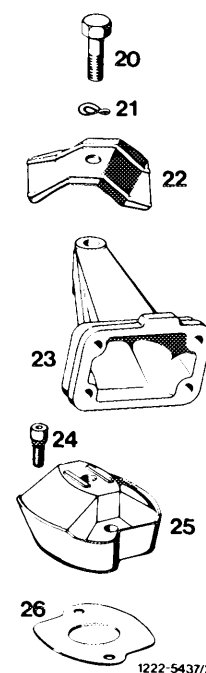
**Note:** Use wooden support to prevent damage to oil pan.



5 Unscrew screws (20) and remove engine mount with shim (26).

**Note:** Shim (26) is installed on engine mounts part no. 115 241 07 13 and 107 241 09 13 only.

- 20 Screw M 12 x 55
- 21 Spring washer B 12
- 22 Shielding plate (right)
- 23 Engine mount
- 24 Combination screw M 8 x 18
- 25 Engine mount
- 26 Shim



## Installation

6 Position engine mount with shim and screw down.

7 Lower engine. On model 115.017, connect engine shock absorber to cross member.

8 Screw engine carrier to engine mount.

9 On model 115.017, screw down engine shock absorber from below. For this purpose, apply counterhold to piston rod by means of a screw driver at spot provided (arrow).

10 On model 115.015, screw-on engine stop.

11 Adjust engine stop (22–220).



100-10183/h

## Model 123

### Removal

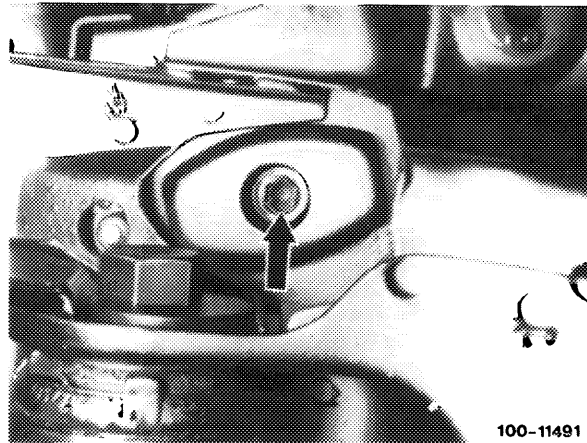
1 Unscrew screws (20) for engine carrier on engine mount from below (arrow).

#### Attention!

There are two screw versions:

1st version	M 12 x 35
2nd version	M 10 x 40

The threaded bore in engine carrier has also been changed accordingly.

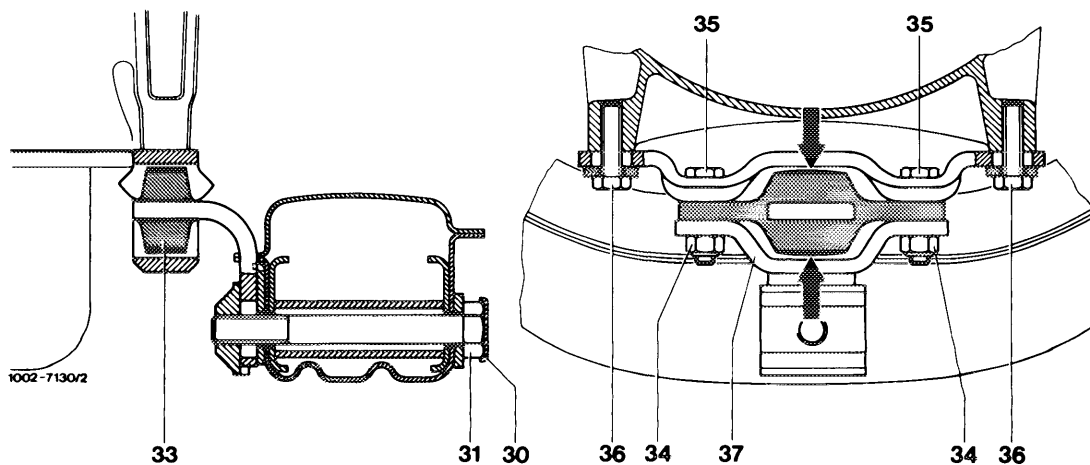


100-11491

2 Turn steering completely to the left or to the right.

3 Lift lock (30) on front engine stop and swivel away laterally.

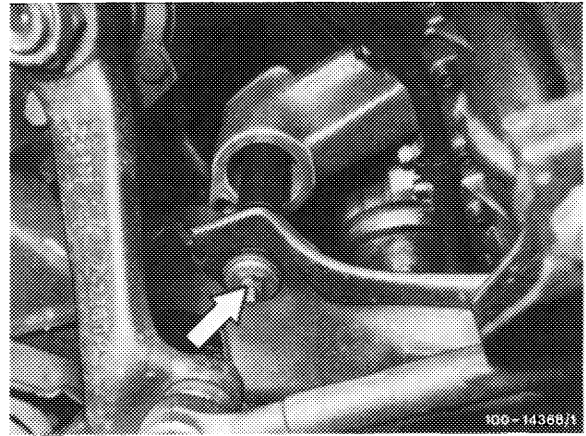
4 Unscrew adjusting screw (31).



1002-7130/2

5 On vehicles with engine shock absorbers, unscrew lower nut (arrow).

For this purpose, apply counterhold to piston rod at spot provided (fig. item 13).



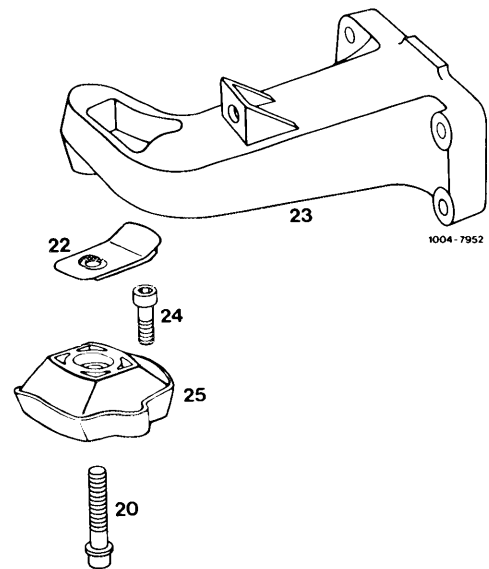
6 On vehicles with power steering, disconnect return flow hose on power steering. For this purpose, draw oil from supply tank of power steering pump.

7 Lift engine with pit lift at oil pan.

**Note:** Use wooden support to prevent damage to oil pan.

8 Remove shielding plate (22) at righthand engine mount.

9 Unscrew screw (24) and remove engine mount.



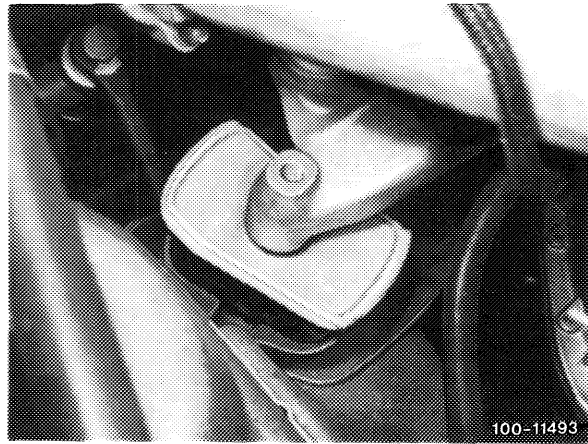
- 20 Screw M 12 x 35 or M 10 x 40
- 22 Shielding plate
- 23 Engine mount
- 24 Combination screw M 8 x 18
- 25 Engine mount

## Installation

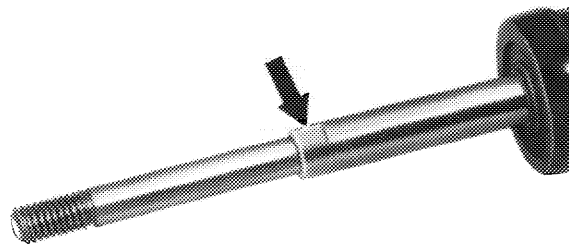
- 10 Position engine mount and screw down.
- 11 Insert shielding plate on righthand engine mount.

**Note:** Pay attention to installation position.

- 12 Lower engine, while connecting engine shock absorber to cross member.



- 13 Position screws (20) and tighten to 70 or 40 Nm.
- 14 Tighten engine shock absorber below. For this purpose, apply counterhold to piston rod at spot provided (arrow).
- 15 Adjust engine stop (22–220).
- 16 Upon installation of new engine mounts, adjust engine stop once again after 1000–1500 and 10 000 km (22–220).



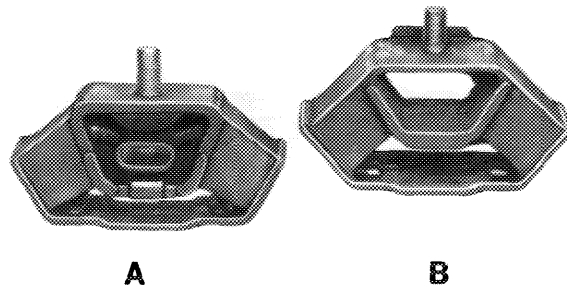
## Engine mount rear

### Note

#### Model 115

On vehicles with manual transmission the engine mount is provided with a stop only on model 115.015 and on vehicles with automatic transmission on all models.

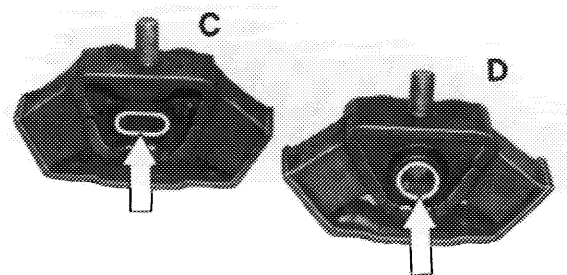
- A Engine mount with stop  
B Engine mount without stop



#### Model 123

On vehicles with manual transmission the engine mount (C) with oval tube (arrow) has been replaced by engine mount (D) with a round tube (arrow) starting with the chassis end numbers named below.

- C Engine mount with oval tube  
D Engine mount with round tube

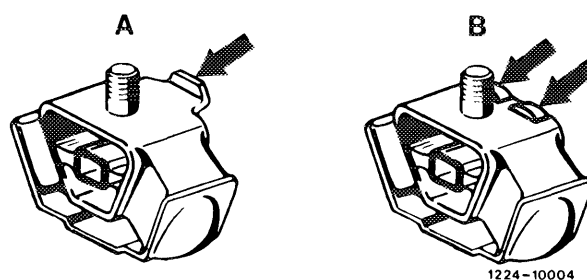


On vehicles with manual transmission and engine mount (C), with complaints from customers about vibrations (spluttering), engine mount (D) can be subsequently provided with round tube part no. 123 240 13 18 (refer to model 123, fig. item 10). On vehicles with automatic transmission this engine mount must not be installed.

#### Installation of engine mount with round tube

Model	Chassis end no.
123.020	042 245
123.023	053 256
123.043	Start of series
123.083	Start of series

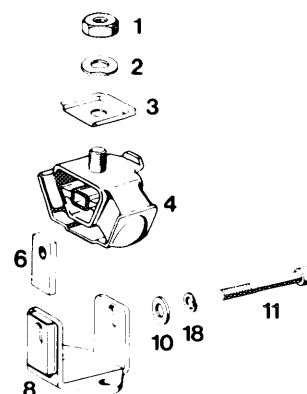
If a rear engine mount with two attaching lugs (arrows) is installed, holding plate (3 in fig. item 1 model 115) should be dispensed with.



#### Model 115

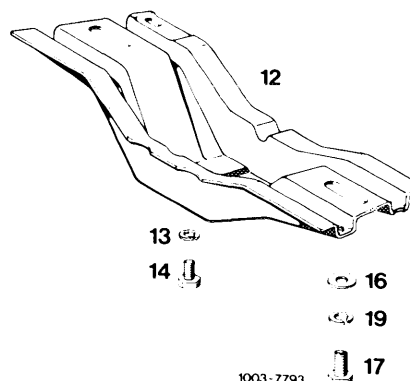
##### Removal

- 1 Unscrew nut (1).
- 2 On model 115.015 generally, and on model 115.017 with automatic transmission, loosen adjusting screw (11).
- 3 Loosen support at exhaust end on transmission holder.
- 4 Unscrew screws (14).



#### Model 115.015 generally and 115.017 with automatic transmission

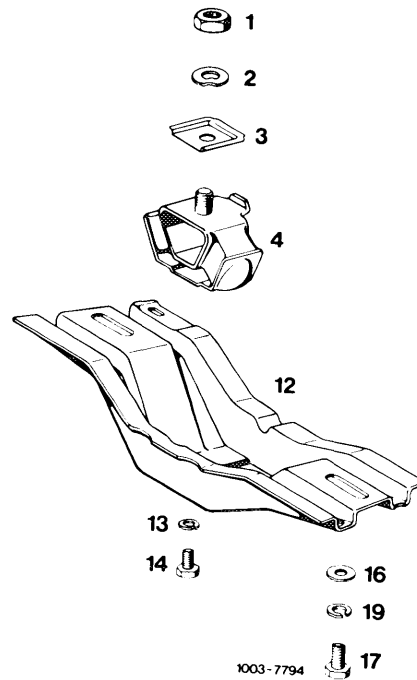
- |                             |                    |
|-----------------------------|--------------------|
| 1 Nut M 12 x 1.5            | 12 Engine carrier  |
| 2 Spring washer B 12        | 13 Circlip B 10    |
| 3 Holding plate             | 14 Screw M 8 x 12  |
| 4 Engine mount              | 16 Washer          |
| 6 Threaded plate            | 17 Screw M 10 x 25 |
| 8 Holder                    | 18 Circlip         |
| 10 Washer                   | 19 Circlip B 10    |
| 11 Adjusting screw M 8 x 75 |                    |



1003-7793

5 Push transmission upwards by means of a pit lift against intermediate flange and remove engine mount (4) or engine mount (4) with holder (8).

6 On model 115.015 generally and on model 115.017 with automatic transmission, unscrew adjusting screw (11) and remove engine mount from holder.



Model 115.017 with manual transmission

- |                      |                    |
|----------------------|--------------------|
| 1 Nut M 12 x 1.5     | 13 Circlip B 10    |
| 2 Spring washer B 12 | 14 Screw M 8 x 12  |
| 3 Holding plate      | 16 Washer          |
| 4 Engine mount       | 17 Screw M 10 x 25 |
| 12 Engine carrier    | 19 Circlip B 10    |

## Installation

7 Place new engine mount into holder (8) or on engine carrier (12).

8 Screw-in adjusting screw (11).

### Attention!

Do not tighten adjusting screw (11).

9 Insert engine mount with holder.

10 Lower transmission.

11 Position screws (14) and tighten to 30 Nm.

12 Screw-on nut (1), torque reference value 70 Nm.

13 On model 115.015 generally and on model 115.017 with automatic transmission, move engine manually by shaking lightly in crosswise direction.

14 Tighten adjusting screw (11) to 30 Nm.

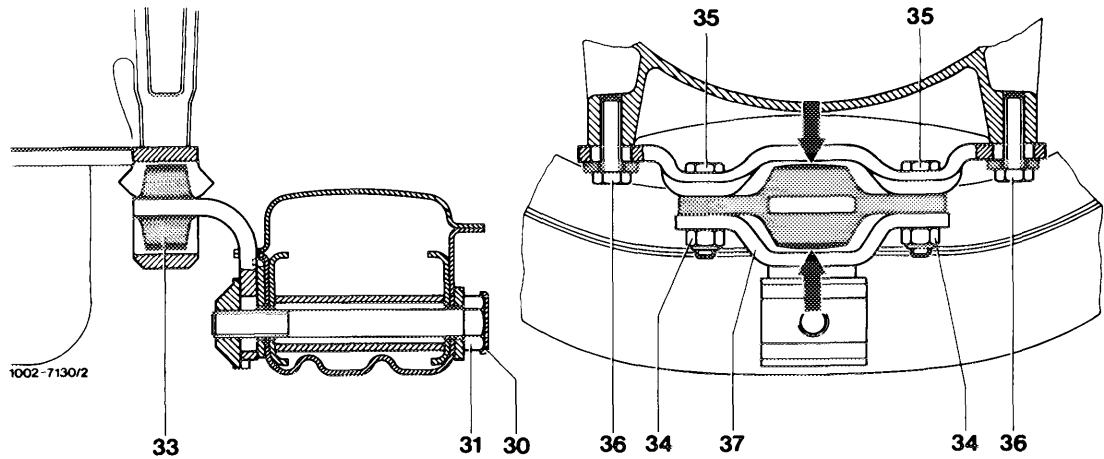
15 Tighten support at exhaust end.



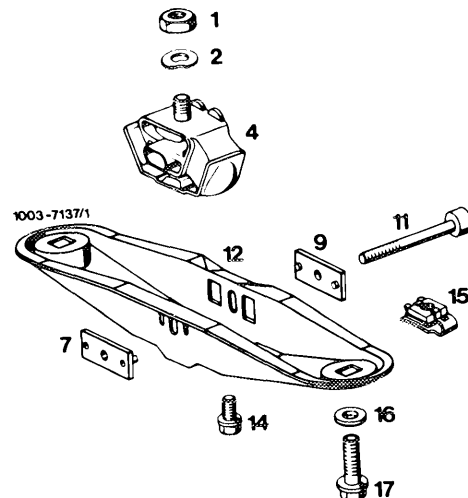
## Model 123

### Removal

- 1 Turn steering completely to the left or right.
- 2 At front engine stop, lift lock (30) and swivel away in lateral direction. Loosen adjusting screw (31).



- 3 Loosen support at exhaust end on transmission holder.
- 4 Unscrew nut (1).
- 5 Loosen adjusting screw (11).
- 6 Unscrew screws (14).
- 7 On vehicles with automatic transmission, push transmission in upward direction by means of a pit lift placed against intermediate flange.
- 8 On vehicle with manual transmission, support transmission with a pit lift and unscrew engine carrier (12).
- 9 Unscrew adjusting screw (11) and take engine mount (4) from holder or engine carrier.



1st version  
Vehicles with manual transmission

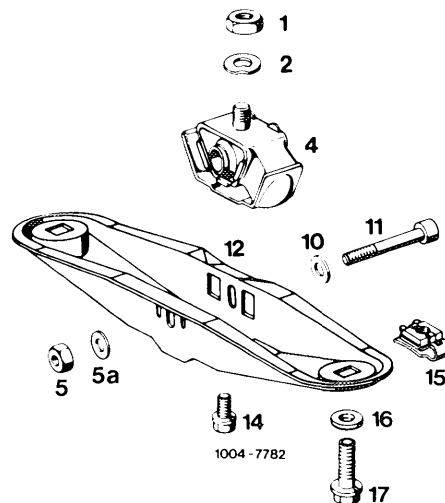
- |                             |                      |
|-----------------------------|----------------------|
| 1 Nut M 12 x 1.5            | 12 Engine carrier    |
| 2 Spring washer B 12        | 14 Combination screw |
| 4 Engine mount              | 15 Cage nut          |
| 7 Threaded plate            | 16 Washer            |
| 9 Plate                     | 17 Combination screw |
| 11 Adjusting screw M 8 x 72 |                      |

## Installation

10 Insert new engine mount into holder (8) or engine carrier (12).

2nd version  
Vehicles with manual transmission

- |                      |                           |
|----------------------|---------------------------|
| 1 Nut M 12 x 1.5     | 11 Adjusting screw 8 x 75 |
| 2 Spring washer B 12 | 12 Engine carrier         |
| 4 Engine mount       | 14 Combination screw      |
| 5 Nut M 8            | 15 Cage nut               |
| 5a Washer            | 16 Washer                 |
| 10 Washer            | 17 Combination screw      |



11 Screw-in adjusting screw (11).

### Attention!

Do not tighten adjusting screw (11).

12 On vehicles with automatic transmission, insert engine mount with holder.

13 On vehicles with manual transmission, screw-on engine carrier with engine mount, do not tighten screws.

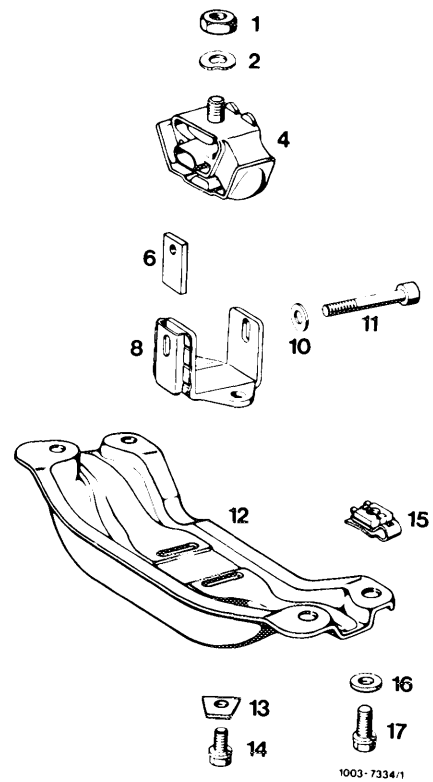
14 Lower transmission

15 On vehicles with manual transmission, screw down engine carrier.

16 Position screw (14) and tighten to 30 Nm.

17 Screw-on nut (1).

Torque reference value 70 Nm.



Vehicles with automatic transmission

- |                             |                      |
|-----------------------------|----------------------|
| 1 Nut M 12 x 1.5            | 12 Engine carrier    |
| 2 Spring washer B 12        | 13 Washer            |
| 4 Engine mount              | 14 Combination screw |
| 6 Threaded plate            | 15 Cage nut          |
| 8 Holder                    | 16 Washer            |
| 10 Washer                   | 17 Combination screw |
| 11 Adjusting screw M 8 x 72 |                      |

18 Adjust engine stop (22–220).

19 Tighten support at exhaust end.

20 Adjust engine stop once again after 1000–1500 km and after 10 000 km (22–220).