

43–350 Removal and installation of brake booster

Data

Brake booster	Teves T 52/225	Bendix B 90	Teves T 52/1/255 DBA 255 Girling Girvac 80 Girling LS 80 ¹⁾	Teves T 52/225 T
Dia.	mm	228.6	254	228.6
	inches	9	10	9
Boosting factor	approx. 3		approx. 4.5	

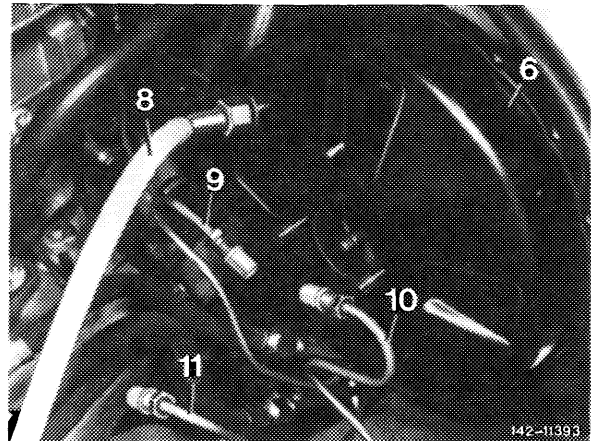
Tightening torques

	Nm
Hex. nuts for attaching brake booster to front end	15
Coupling nut of vacuum line to brake booster	30

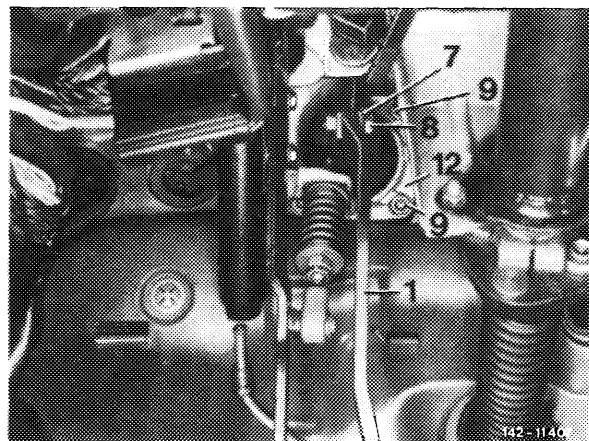
¹⁾ (USA) 1981

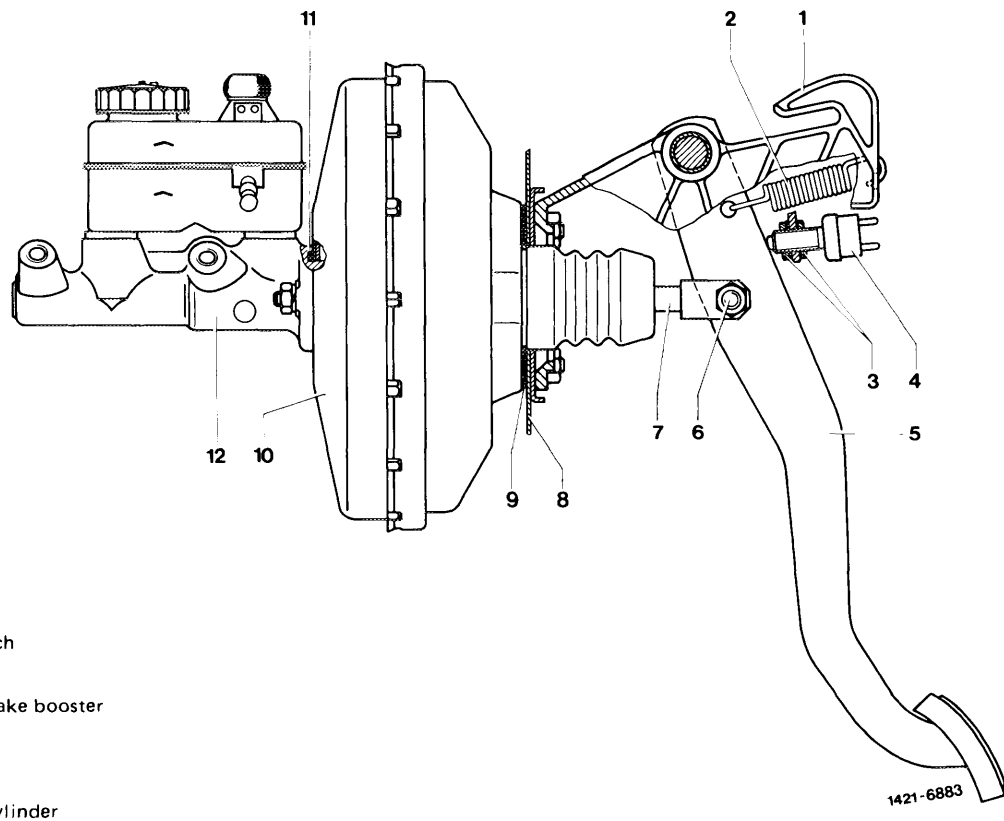
Removal

- 1 On vehicles with manual transmission, remove connecting hose toward master cylinder.
- 2 Remove tandem main cylinder (42–310).
- 3 Loosen vacuum line (8) on brake booster (6).



- 4 Remove cover below instrument panel in leg room.
- 5 Loosen push rod (7) of brake booster on brake pedal (1). For this purpose, unscrew hex. nut on first version, then remove hex. bolt (8) and bushing. On second version, remove lock and pull out flange bolt.
- 6 Unscrew hex. nuts (9) from carrier (12).





- 1 Carrier
- 2 Return spring
- 3 Hex. nut
- 4 Brake light switch
- 5 Brake pedal
- 6 Hex. bolt
- 7 Piston rod of brake booster
- 8 Front end
- 9 Gasket
- 10 Brake booster
- 11 O-ring
- 12 Tandem main cylinder

7 Remove brake booster.

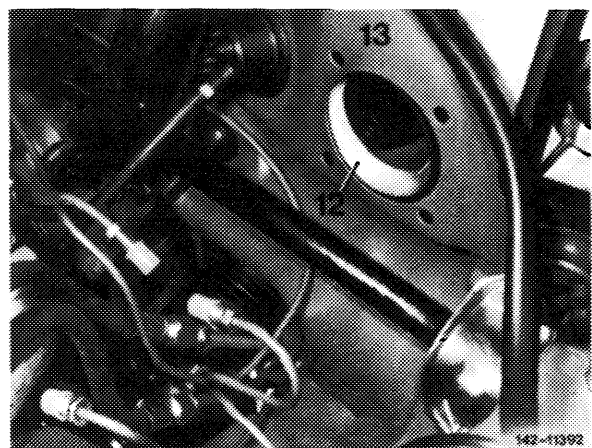
Attention!

The timing housing of the brake booster is made of plastics and may break off if improperly handled.

Installation

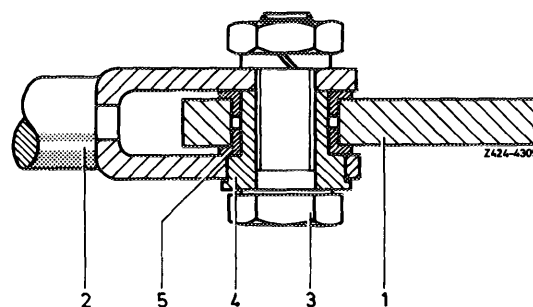
8 Prior to installing a new brake booster, check whether separate check valve is in order. If in doubt, remove valve including plastic lines (42-023).

9 Attach brake unit to front end (13) and carrier (12) of pedal assembly. Tighten hex. nuts to 15 Nm. Make sure that the pedal assembly and the rubber mount are not pushed out of holder on water tank.



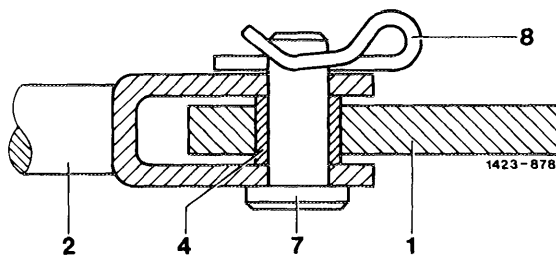
Note: Starting September 1979, the fork head of push rod and the brake pedal on brake unit have been modified. Instead of the formerly used hex. bolt and flange bushing, a flange bolt of 8 mm dia. together with a lock are now installed.

10 On 1st version, attach push rod (2) of brake booster with bushing (4) and hex. bolt (3) to brake pedal (1).



1st version

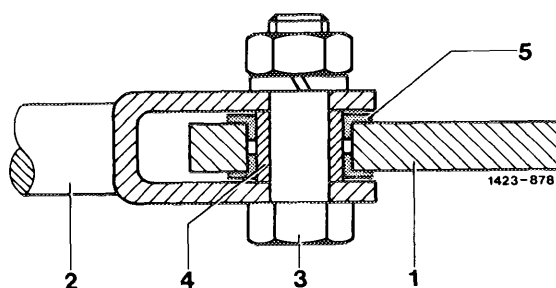
11 On 2nd version, starting September 1979, attach push rod (2) of brake booster with flange bolt (7) and lock (8) to brake pedal (1).



2nd version

Attention!

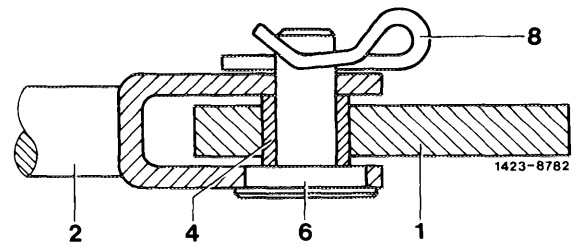
When installing a brake booster with a new fork head and an old brake pedal, additionally install bushing (4) part no. 123 292 01 50 into arm (1). Hex. bolt (3) with spring washer and nut can be used again.



New fork head,
old brake pedal

When installing a new brake pedal and a brake booster with old fork head, install flange bolt (6), part no. 126 292 01 74 together with lock (8).

New brake pedal
Old fork head



- 12 Install air duct.
- 13 Attach cover under instrument panel in legroom.
- 14 Connect vacuum line (8) to brake booster (6). Tighten coupling nut to 30 Nm.
- 15 Install tandem main cylinder (42-310).
- 16 On vehicles with manual transmission, plug connecting hose (7) for master cylinder to expansion tank.

