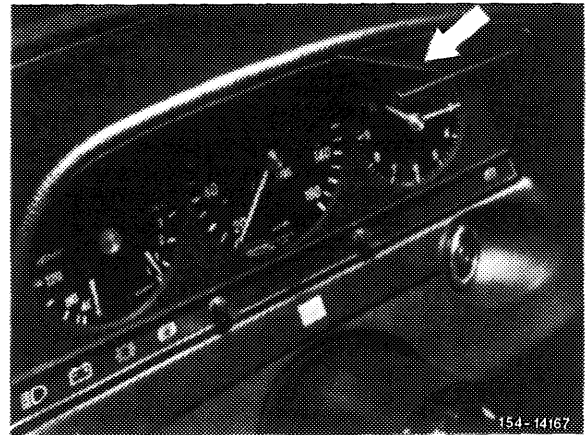
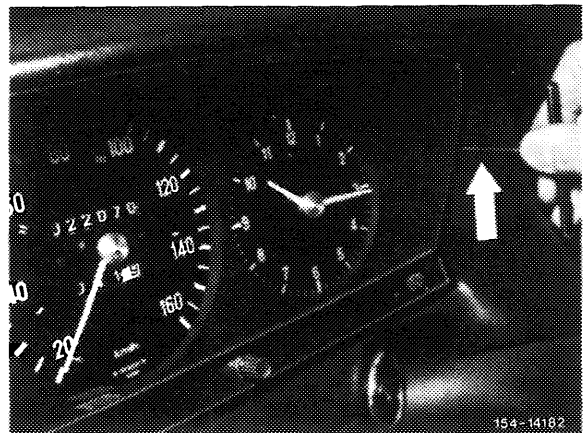


Removal

1 Slightly raise instrument panel and introduce pulling hook, part No. 110 589 00 59 00 via instrument cluster center.



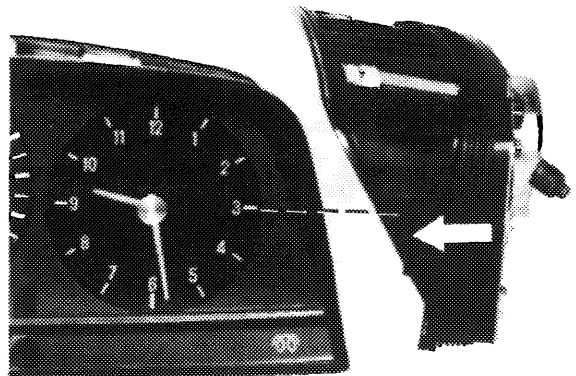
2 Move pulling hook to the right.



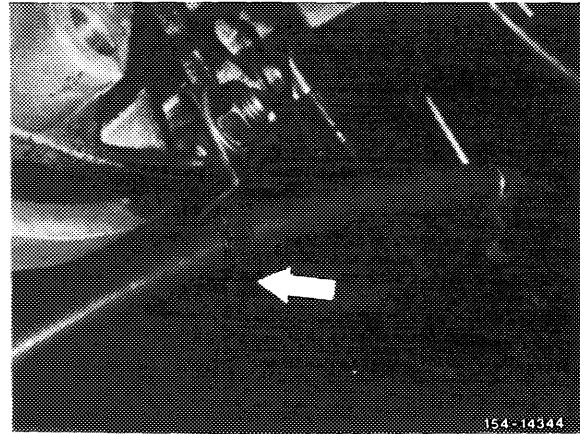
3 Engage at recess (arrow) and pull out slightly.

If tightly seated, the instrument cluster can be pushed out from the rear manually after removing cover below left (68-150).

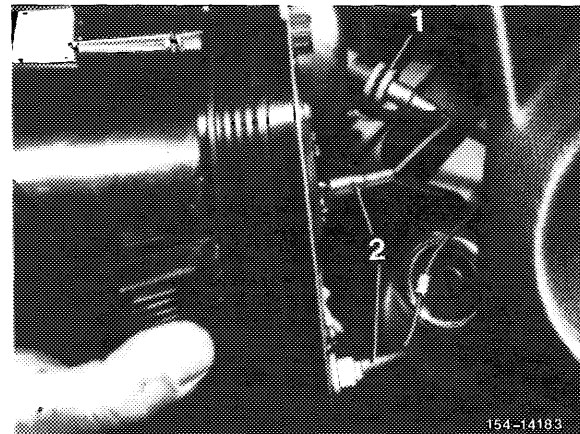
The instrument cluster is held in instrument panel by means of rubber profile strip and suction effect.



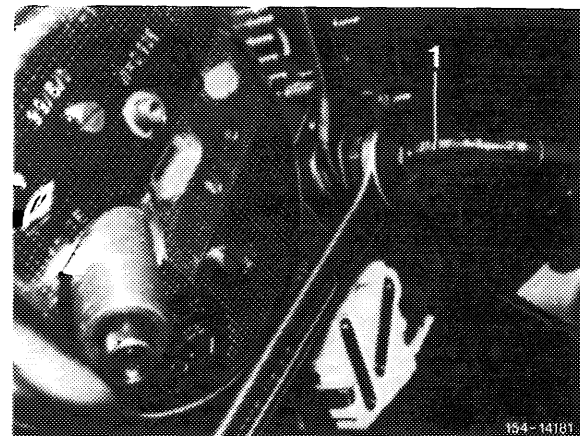
4 Loosen tachometer shaft in engine compartment from holder.



5 Unscrew knurled nut (1) of tachometer shaft. Pull off electric connections (2).



6 Disconnect line for oil pressure gauge (1), (apply counterhold with 2nd open-end wrench and remove instrument cluster toward the right).

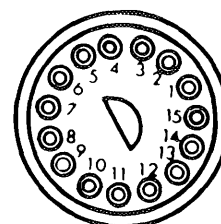


Installation

7 For installation proceed vice versa.

Line-up of coupler

- | | |
|--------------|----------------------|
| 1 white/blue | 10 brown/red/white |
| 2 green | 11 grey/green/purple |
| 3 blue/black | 12 grey/blue |
| 4 blue/green | 13 black/green |
| 5 black/blue | 14 black/white |
| 6 blue/red | 15 brown |
| 7 blue | |
| 8 brown/red | |
| 9 brown/grey | |



1544-7974