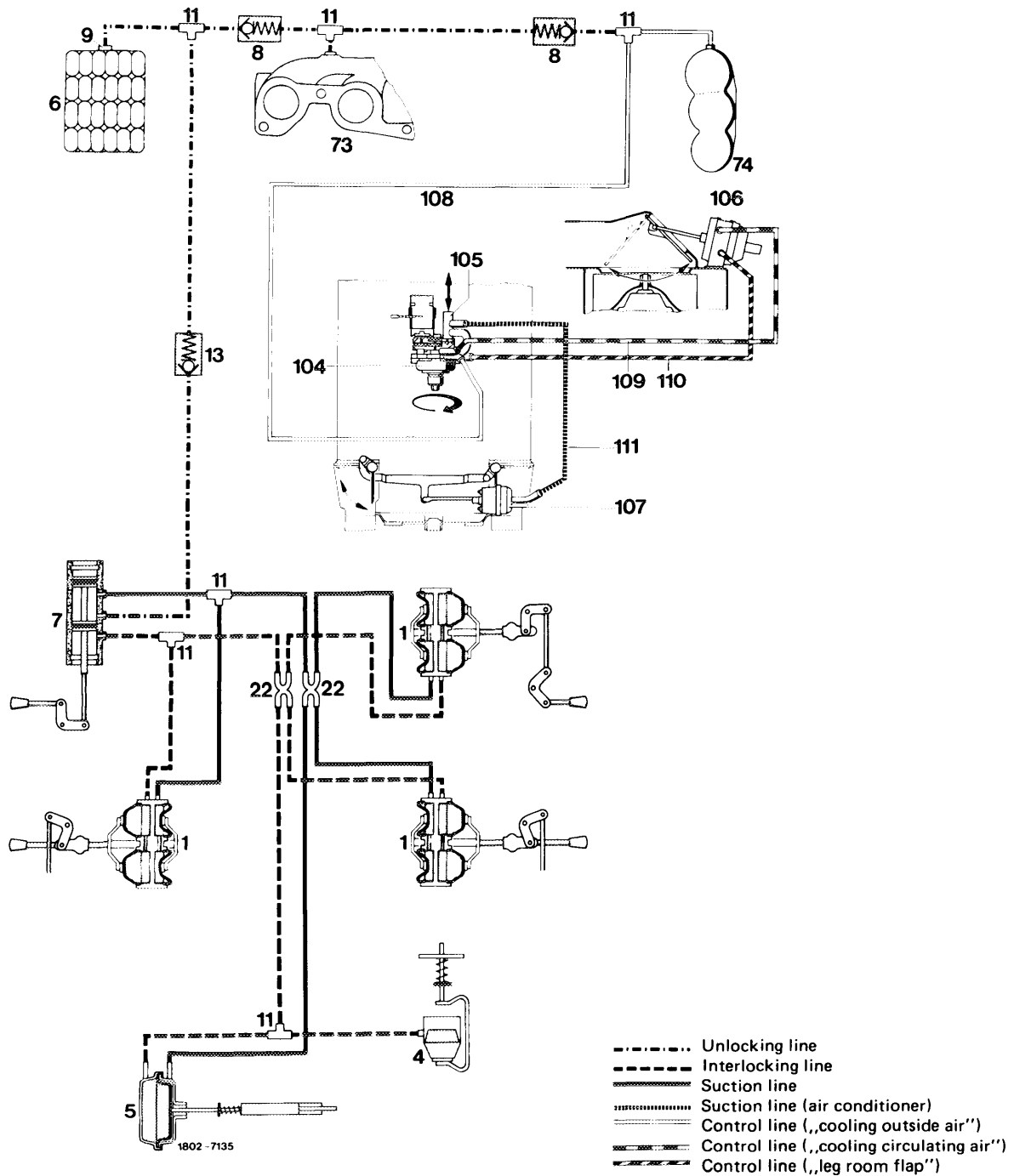


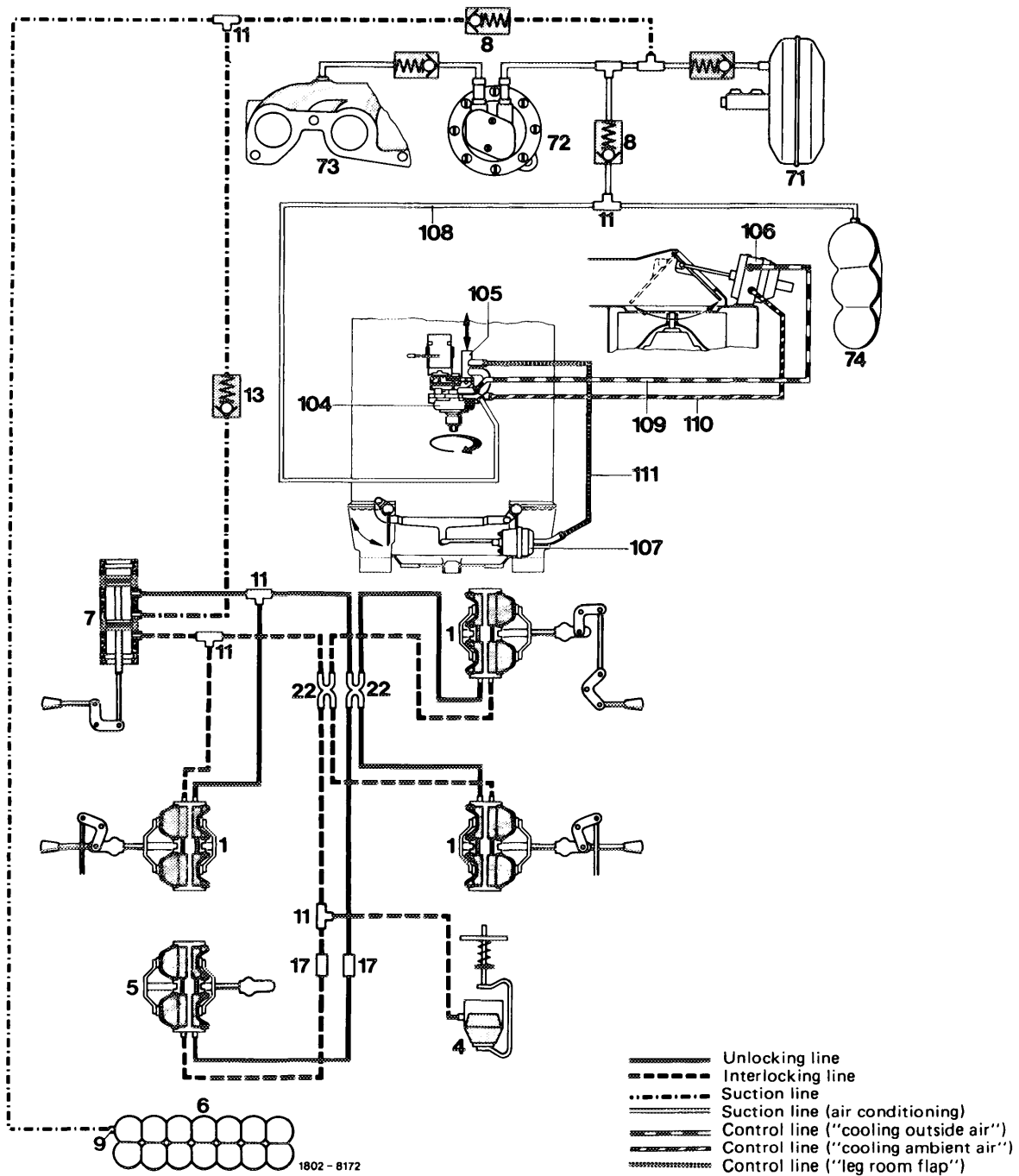
80-901 Functional diagram central interlock and air conditioning system

A. Wiring diagram models 123.02/03



- | | |
|--|---|
| 1 Vacuum element (driver's and rear doors) | 104 Vacuum rotary switch for circulating air flap |
| 4 Vacuum element (flap for tank filler neck) | 105 Vacuum pull switch for leg room flap |
| 5 Vacuum element (trunk lid) | 106 Vacuum element for vacuum flap |
| 6 Vacuum supply tank | 107 Vacuum element for leg room flap |
| 7 Vacuum switch | 108 Suction line (air conditioner) |
| 8 Check valve | 109 Control line („cooling outside air“) |
| 9 Seal | 110 Control line („cooling circulating air“) |
| 11 Three-way distributor | 111 Control line („leg room flap“) |
| 13 Check valve | |
| 22 Four-way distributor | |
| 73 Suction pipe | |
| 74 Vacuum supply tank (air conditioner) | |

D. Wiring diagram models 123.183/190



- 1 Vacuum element (driver's and rear doors)
- 4 Vacuum element (flap for tank filler neck)
- 5 Vacuum element (rear door)
- 6 Vacuum reservoir
- 7 Vacuum switch
- 8 Check valve
- 9 Sealing
- 11 Three-way distributor
- 13 Check valve
- 17 Connection
- 22 Four-way distributor
- 71 Brake unit

- 72 Vacuum pump
- 73 Intake pipe
- 74 Vacuum reservoir (air conditioning system)
- 104 Vacuum rotary switch for ambient air flap
- 105 Vacuum pull switch for leg room flap
- 106 Vacuum element for ambient air flap
- 107 Vacuum element for leg room flap
- 108 Suction line (air conditioning)
- 109 Control line ("cooling outside air")
- 110 Control line ("cooling ambient air")
- 111 Control line ("leg room flap")