

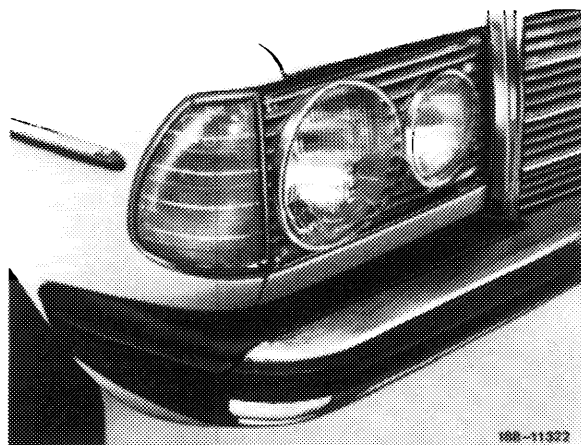
A. Standard equipment

Remove

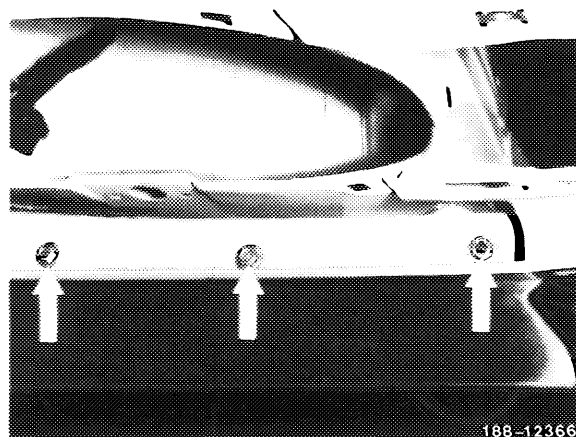
1 Remove front fender (88-200).

2 Remove headlights (82-210).

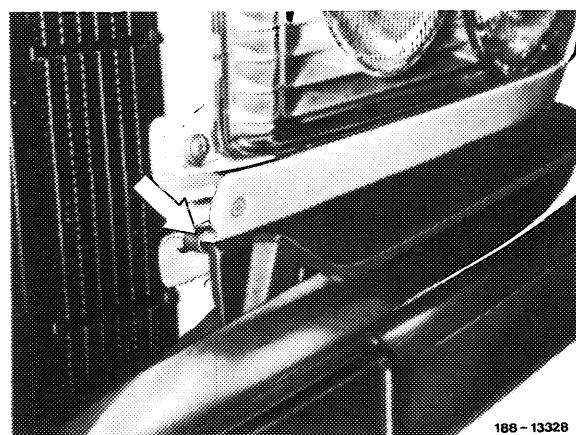
Note: With rubber cover 2. version (as of September 1976) the headlight must no longer be removed, since the 2. version is attached from below by means of two sheet metal screws.



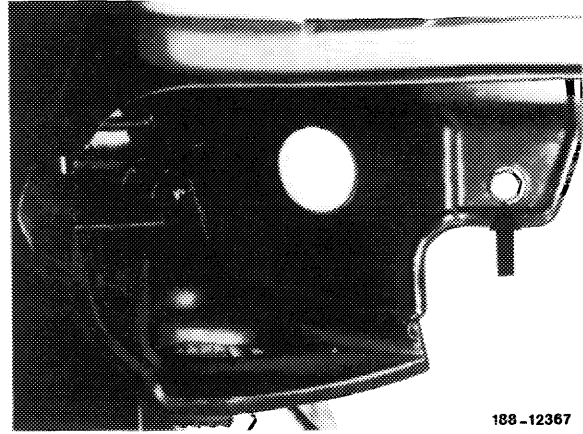
3 Unscrew screws in the headlight cutout, or the two sheet metal screws from below in case of the 2. version.



4 On vehicles 2. version prize out attaching clamp (arrow) with screw driver.

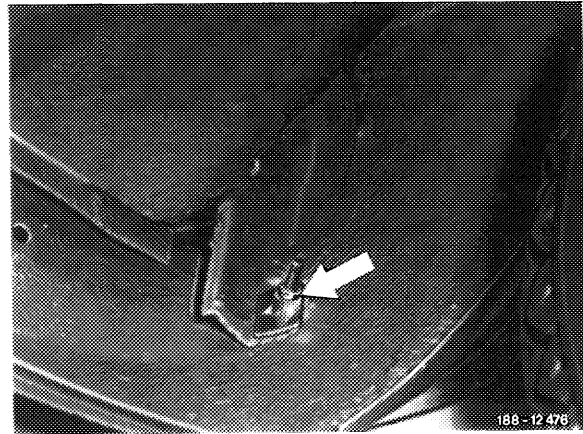


5 Remove screw under headlight cutout.



6 Unscrew fastening nut in wheelhouse.

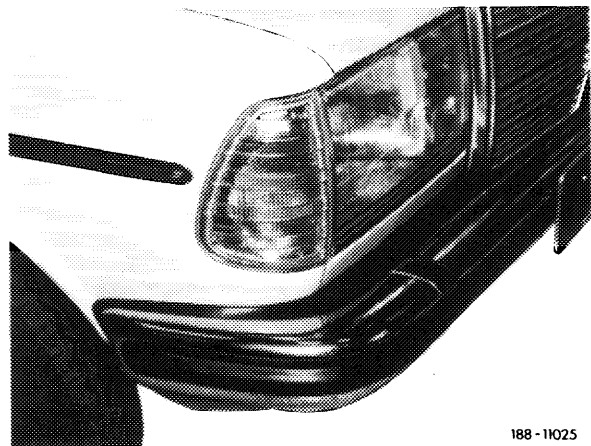
7 Pull out rubber cover in forward direction.



Installation

8 For installation proceed vice versa.

B. De-luxe equipment



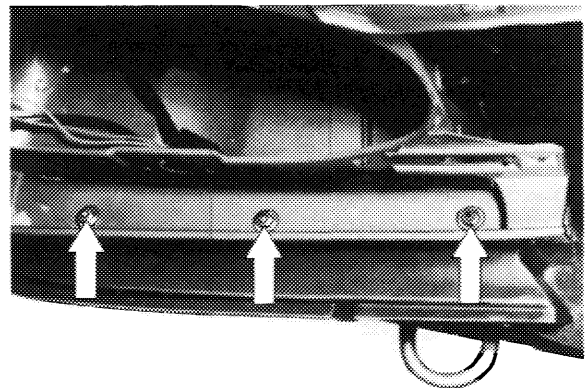
Removal

- 1 Remove front bumper (88–200).
- 2 Remove headlight (82–210).

Note: With rubber cover 2. version (as of September 1976) the headlights need no longer be removed, since the 2. version is attached with two sheet metal screws from below.

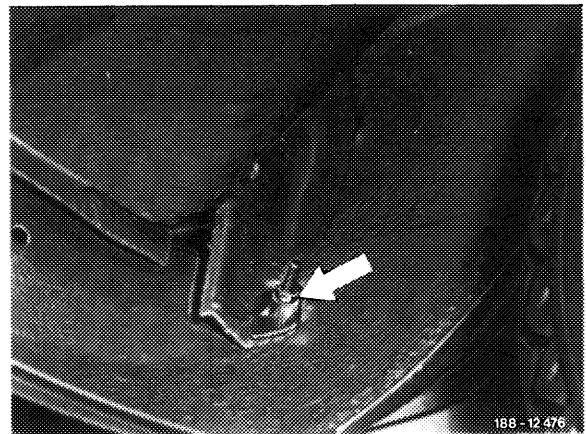
- 3 Unscrew screws in the headlight cutout.

Note: On vehicles 2. version, use a screw driver to prize the attaching clamp out and remove the two sheet metal screws from below.



188 - 12495

- 4 Unscrew fastening nut in wheelhouse.
- 5 Pull out rubber cover in forward direction.



188 - 12476

Installation

- 6 For installation proceed vice versa.