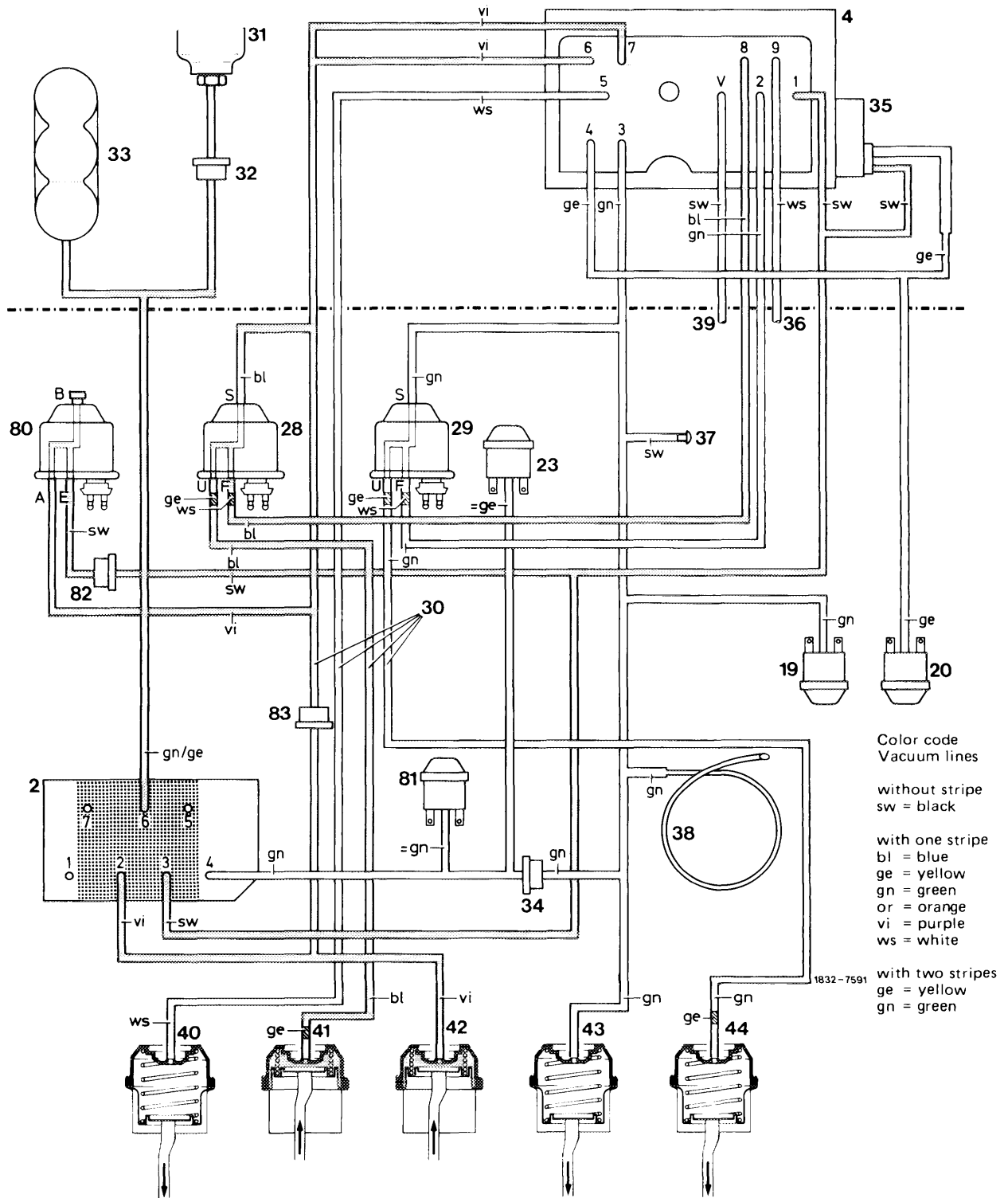


Function diagram 1 Pushbutton switch at "OFF", "ON/OFF" switch refrigerant compressor at "ON"

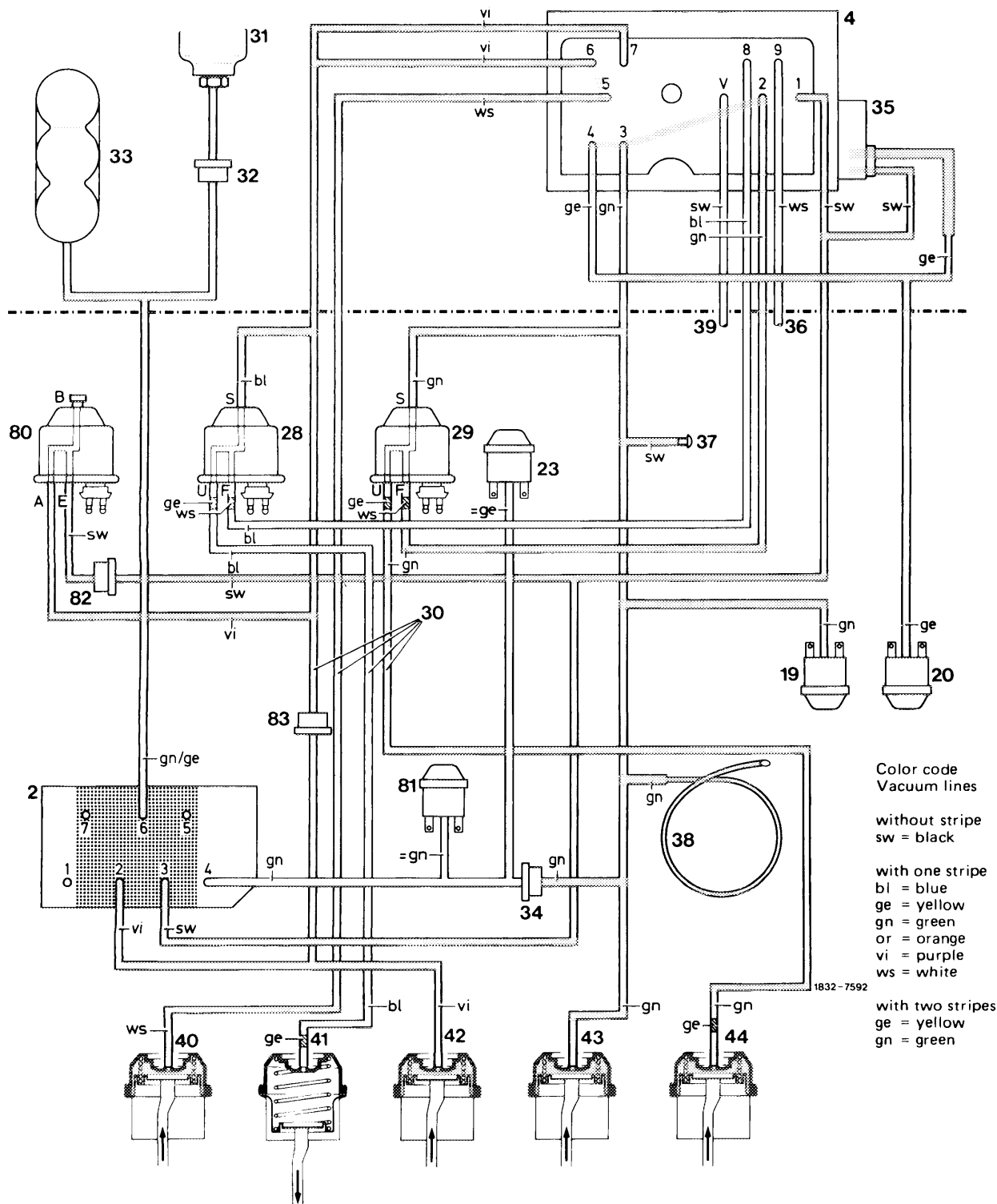
- | | | |
|---|--|--|
| 2 Pushbutton switch | 32 Check valve | 42 Vacuum element for defroster jets (flaps "closed") |
| 4 Regulating valve | 33 Vacuum reservoir | 43 Vacuum element for main air flap (flap "closed") |
| 19 Vacuum switch (main switch, green) | 34 Check valve | 44 Vacuum element for fresh air-recirculating air flap (flap in position "recirculated air") |
| 20 Vacuum switch (refrigerant compressor, yellow) | 35 Temperature switch | 80 Switchover valve "BI-LEVEL" |
| 23 Vacuum switch for refrigerant compressor (at "BI-LEVEL" only) | 36 Vent line for legroom flaps | 81 Vacuum switch (at "BI-LEVEL" only) |
| 28 Switchover valve (legroom flaps) | 37 Vacuum connection for tester | 82 Check valve |
| 29 Switchover valve (fresh air-recirculating air changeover switch) | 38 Specified leak point | 83 Check valve |
| 30 Vacuum lines | 39 Vent line for regulating valve | |
| 31 Vacuum connection at intake pipe | 40 Vacuum element for center jets (flap "open") | |
| | 41 Vacuum element for legroom flaps (flaps "closed") | |



Function diagram 1a

Pushbutton switch at "AUTO-LO" or "AUTO-HI", "ON/OFF" switch refrigerant compressor at "ON", regulating valve in position "heating", coolant temperature $< 40^{\circ}\text{C}$ ($< 104^{\circ}\text{F}$)

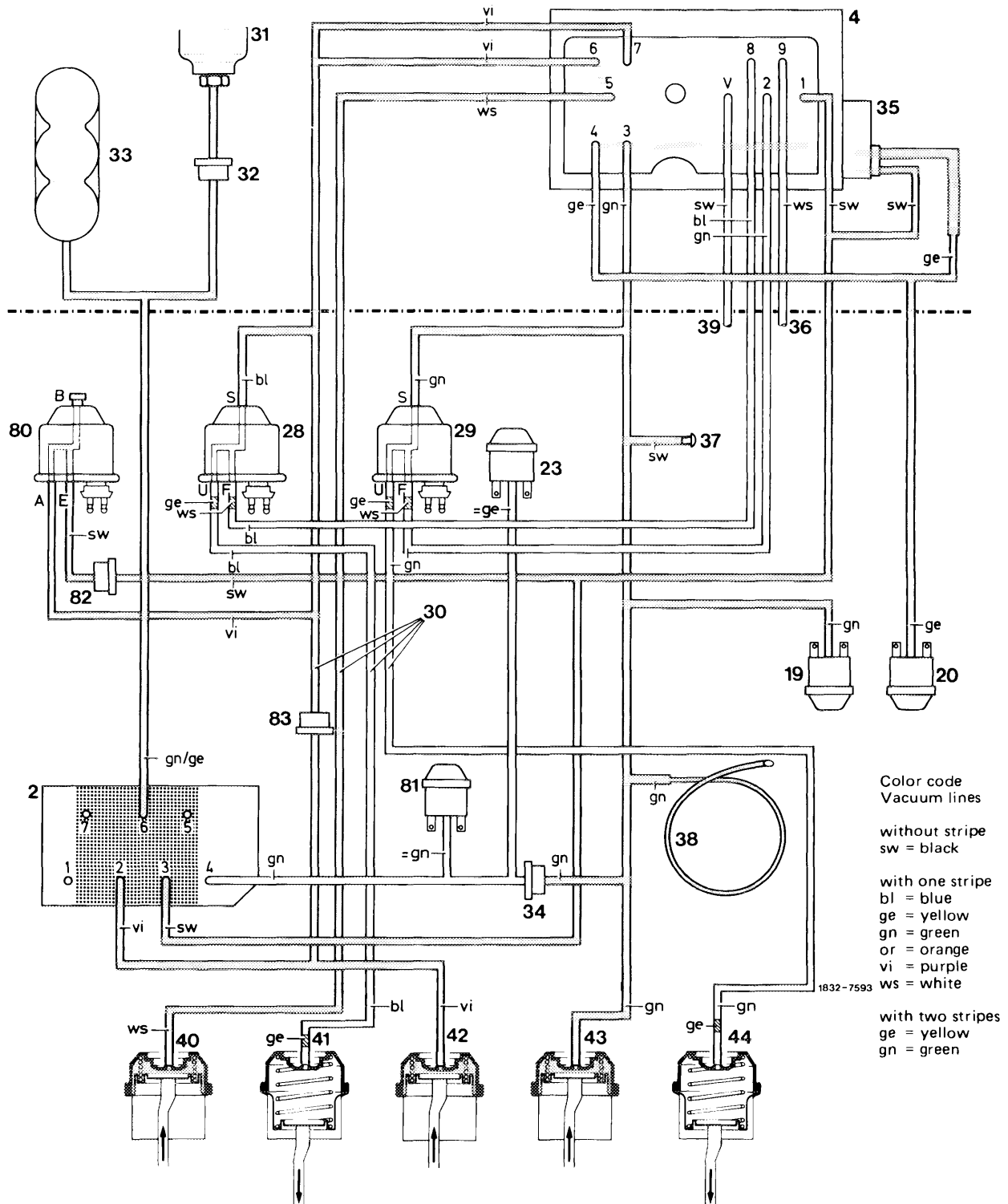
- | | | |
|---|--|--|
| 2 Pushbutton switch | 32 Check valve | 42 Vacuum element for defroster jets (flaps "closed") |
| 4 Regulating valve | 33 Vacuum reservoir | 43 Vacuum element for main air flap (flaps "closed") |
| 19 Vacuum switch (main switch, green) | 34 Check valve | 44 Vacuum element for fresh air-recirculating air flap (flap in position "recirculated air") |
| 20 Vacuum switch (refrigerant compressor, yellow) | 35 Temperature switch | 80 Switchover valve "BI-LEVEL" |
| 23 Vacuum switch for refrigerant compressor (at "BI-LEVEL" only) | 36 Vent line for legroom flaps | 81 Vacuum switch (at "BI-LEVEL" only) |
| 28 Switchover valve (legroom flaps) | 37 Vacuum connection for tester | 82 Check valve |
| 29 Switchover valve (fresh air-recirculating air changeover switch) | 38 Specified leak point | 83 Check valve |
| 30 Vacuum lines | 39 Vent line for regulating valve | |
| 31 Vacuum connection at intake pipe | 40 Vacuum element for center jets (flap "closed") | |
| | 41 Vacuum element for legroom flaps (flaps "open") | |



Function diagram 2

Pushbutton switch at "AUTO-LO" or "AUTO-HI", "ON/OFF" switch refrigerant compressor at "ON", regulating valve in position "cooling" (fresh air), coolant temperature $> 40^{\circ}\text{C}$ ($> 104^{\circ}\text{F}$)

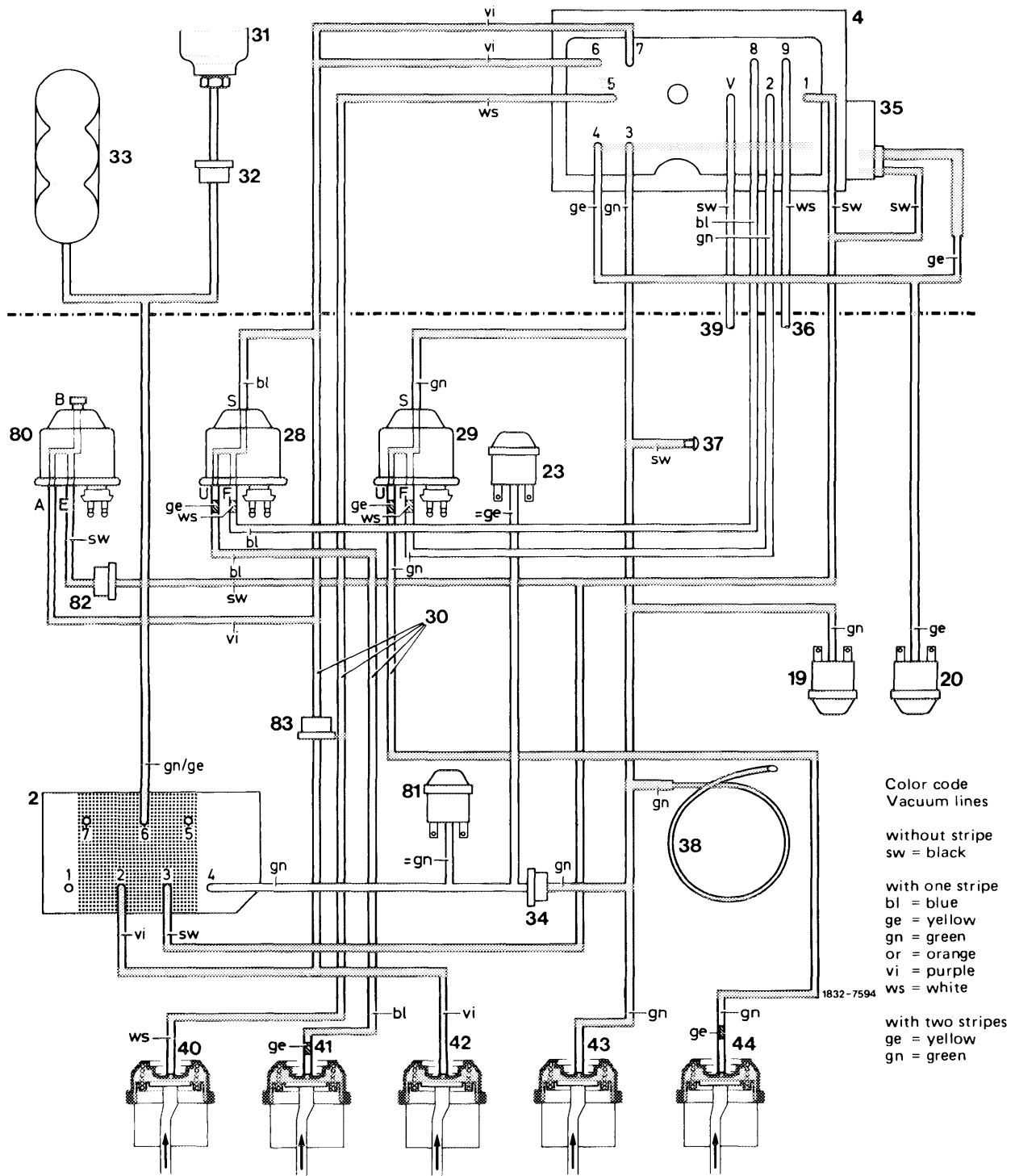
- | | | |
|---|--|---|
| 2 Pushbutton switch | 32 Check valve | 42 Vacuum element for defroster jets (flaps "closed" with leak air portion) |
| 4 Regulating valve | 33 Vacuum reservoir | 43 Vacuum element for main air flap (flap "open") |
| 19 Vacuum switch (main switch, green) | 34 Check valve | 44 Vacuum element for fresh air-recirculating air flap (flap in position "fresh air") |
| 20 Vacuum switch (refrigerant compressor, yellow) | 35 Temperature switch | 80 Switchover valve "BI-LEVEL" |
| 23 Vacuum switch for refrigerant compressor (at "BI-LEVEL" only) | 36 Vent line for legroom flaps | 81 Vacuum switch (at "BI-LEVEL" only) |
| 28 Switchover valve (legroom flaps) | 37 Vacuum connection for tester | 82 Check valve |
| 29 Switchover valve (fresh air-recirculating air changeover switch) | 38 Specified leak point | 83 Check valve |
| 30 Vacuum lines | 39 Vent line for regulating valve | |
| 31 Vacuum connection at intake pipe | 40 Vacuum element for center jets (flap "open") | |
| | 41 Vacuum element for legroom flaps (flaps "closed") | |



Function diagram 3

Pushbutton switch at "AUTO-LO" or "AUTO-HI", "ON/OFF" switch refrigerant compressor at "ON", regulating valve in position max. "cooling" (recirculated air), coolant temperature $> 40^{\circ}\text{C}$ ($> 104^{\circ}\text{F}$)

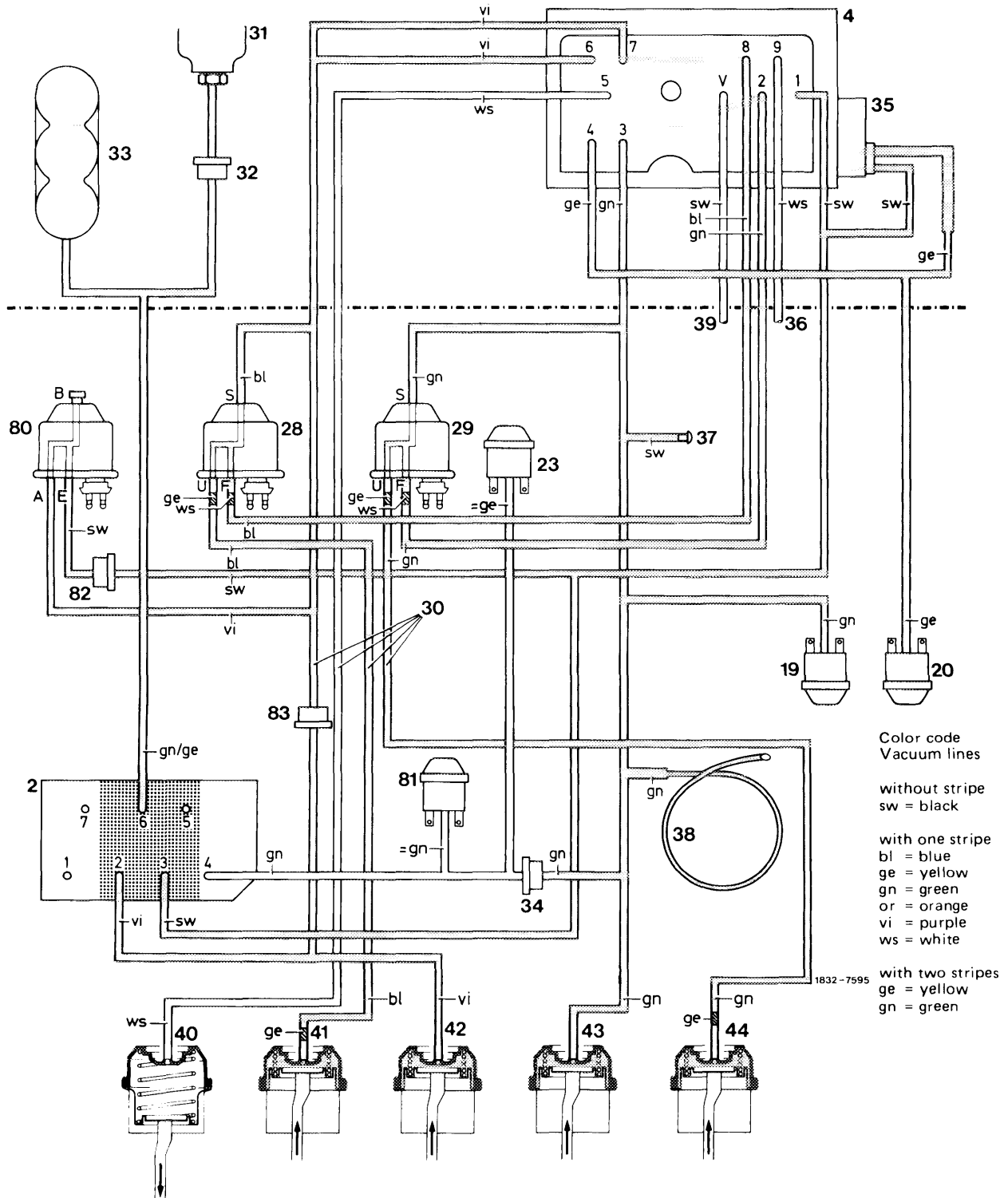
- | | | |
|---|--|--|
| 2 Pushbutton switch | 32 Check valve | 42 Vacuum element for defroster jets (flaps "closed" with leak air portion) |
| 4 Regulating valve | 33 Vacuum reservoir | 43 Vacuum element for main air flap (flap "open") |
| 19 Vacuum switch (main switch, green) | 34 Check valve | 44 Vacuum element for fresh air-recirculated air flap, (flap in position "recirculated air", 20 % fresh air/80 % recirculated air) |
| 20 Vacuum switch (refrigerant compressor, yellow) | 35 Temperature switch | 80 Switchover valve "BI-LEVEL" |
| 23 Vacuum switch for refrigerant compressor (at "BI-LEVEL" only) | 36 Vent line for legroom flaps | 81 Vacuum switch (at "BI-LEVEL" only) |
| 28 Switchover valve (legroom flaps) | 37 Vacuum connection for tester | 82 Check valve |
| 29 Switchover valve (fresh air-recirculating air changeover switch) | 38 Specified leak point | 83 Check valve |
| 30 Vacuum lines | 39 Vent line for regulating valve | |
| 31 Vacuum connection at intake pipe | 40 Vacuum element for center jets (flap "open") | |
| | 41 Vacuum element for legroom flaps (flaps "closed") | |



Function diagram 4

Pushbutton switch at "AUTO-LO" or "AUTO-HI", "ON/OFF" switch refrigerant compressor at "OFF", regulating valve in position max. "cooling" (fresh air, coolant temperature > 40 °C (> 104 °F))

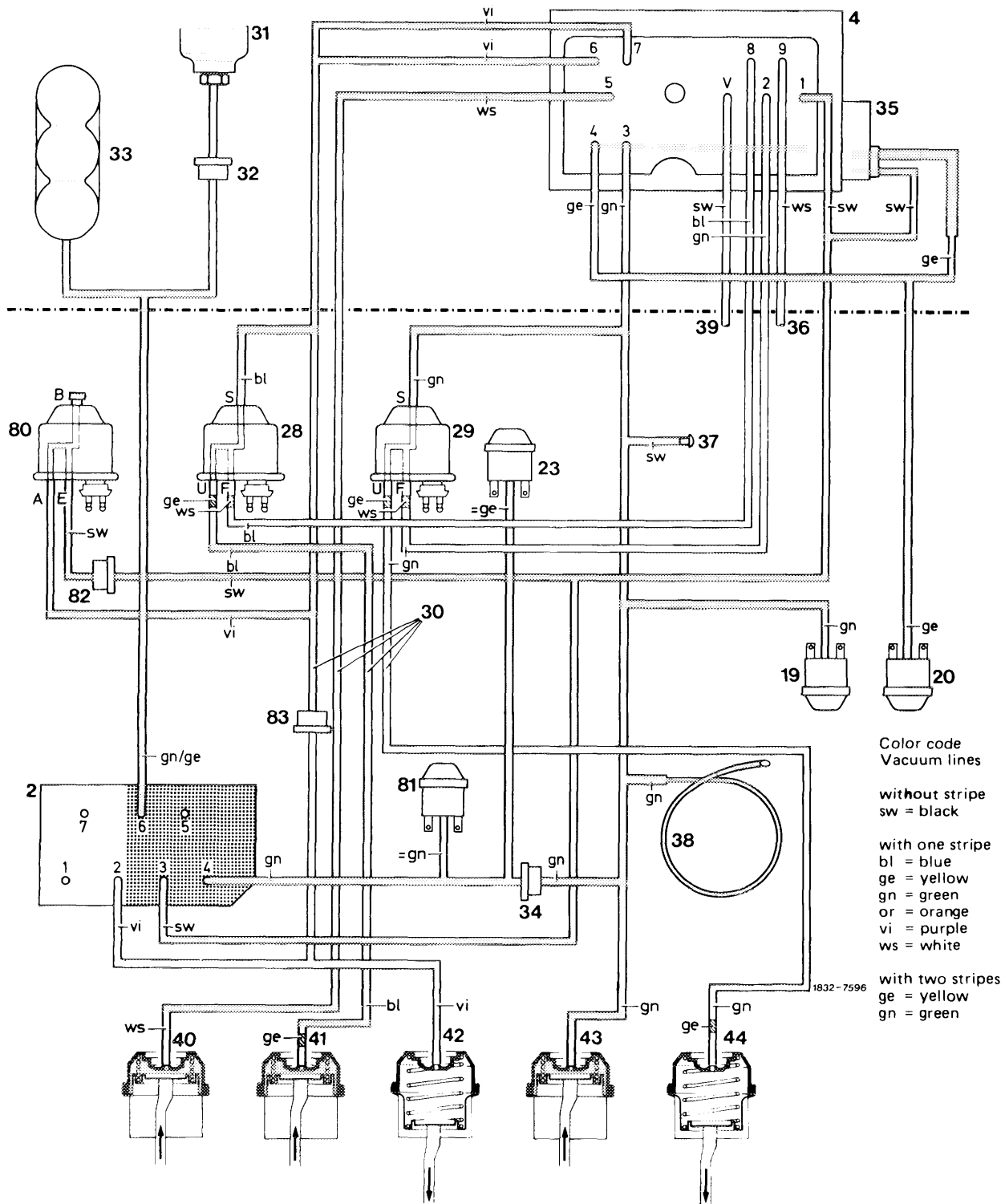
- | | | |
|---|--|--|
| 2 Pushbutton switch | 32 Check valve | 42 Vacuum element for defroster jets (flaps "closed" with leak air portion) |
| 4 Regulating valve | 33 Vacuum reservoir | 43 Vacuum element for main air flap (flap "open") |
| 19 Vacuum switch (main switch, green) | 34 Check valve | 44 Vacuum element for fresh air-recirculated air flap (flap in position "fresh air") |
| 20 Vacuum switch (refrigerant compressor, yellow) | 35 Temperature switch | 80 Switchover valve "BI-LEVEL" |
| 23 Vacuum switch for refrigerant compressor (at "BI-LEVEL" only) | 36 Vent line for legroom flaps | 81 Vacuum switch (at "BI-LEVEL" only) |
| 28 Switchover valve (legroom flaps) | 37 Vacuum connection for tester | 82 Check valve |
| 29 Switchover valve (fresh air-recirculating air changeover switch) | 38 Specified leak point | 83 Check valve |
| 30 Vacuum lines | 39 Vent line for regulating valve | |
| 31 Vacuum connection at intake pipe | 40 Vacuum element for center jets (flap "open") | |
| | 41 Vacuum element for legroom flaps (flaps "open") | |
| | | |



Function diagram 5

Pushbutton switch at "AUTO-LO" or "AUTO-HI", "ON/OFF" switch refrigerant compressor at "ON", regulating valve in position "heating", coolant temperature > 40 °C (> 104 °F)

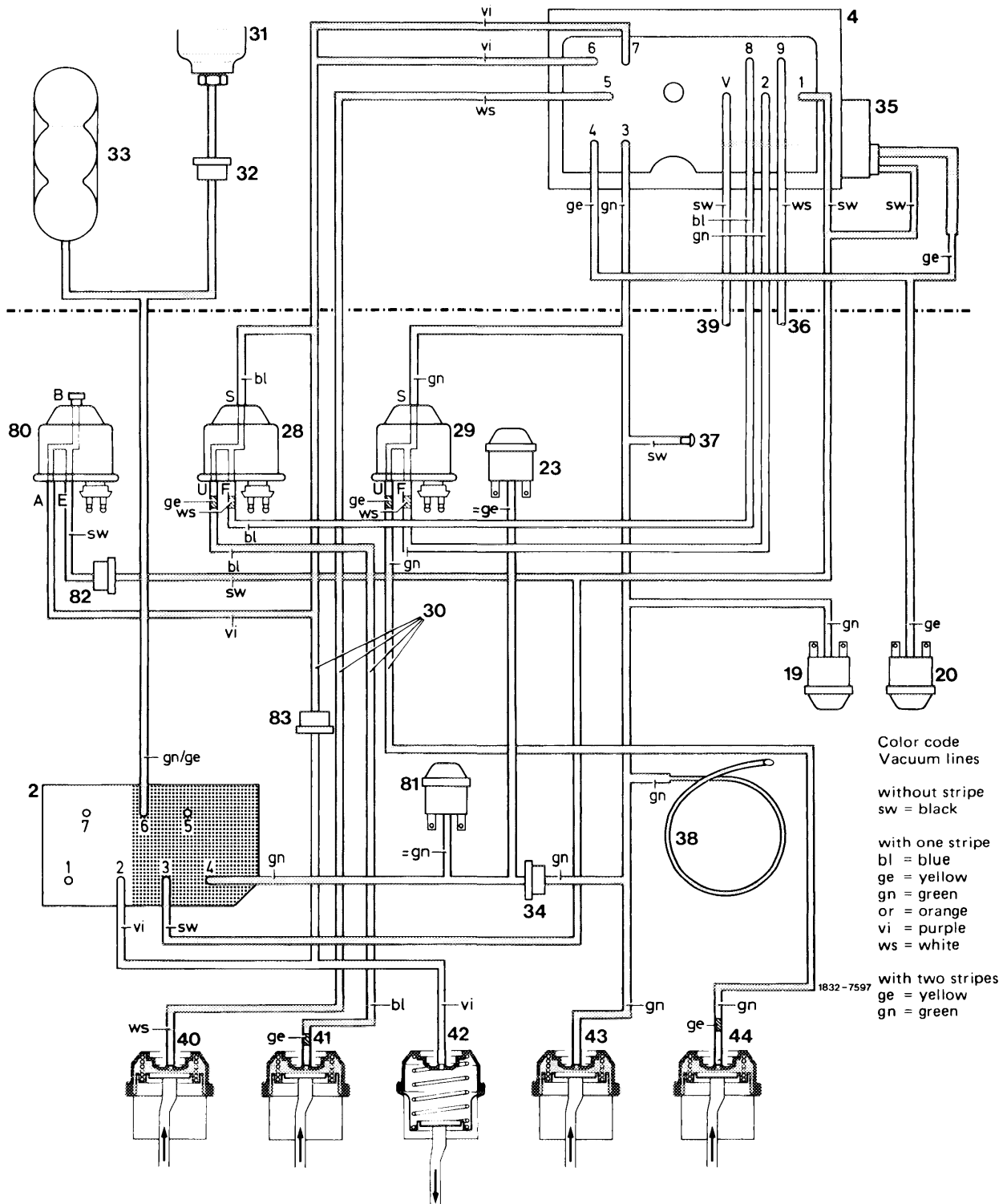
- | | | |
|---|--|--|
| 2 Pushbutton switch | 32 Check valve | 42 Vacuum element for defroster jets (flaps "closed" with leak air portion) |
| 4 Regulating valve | 33 Vacuum reservoir | 43 Vacuum element for main air flap (flap "open") |
| 19 Vacuum switch (main switch, green) | 34 Check valve | 44 Vacuum element for fresh air-recirculated air flap (flap in position "fresh air") |
| 20 Vacuum switch (refrigerant compressor, yellow) | 35 Temperature switch | 80 Switchover valve "BI-LEVEL" |
| 23 Vacuum switch for refrigerant compressor (at "BI-LEVEL" only) | 36 Vent line for legroom flaps | 81 Vacuum switch (at "BI-LEVEL" only) |
| 28 Switchover valve (legroom flaps) | 37 Vacuum connection for tester | 82 Check valve |
| 29 Switchover valve (fresh air-recirculating air changeover switch) | 38 Specified leak point | 83 Check valve |
| 30 Vacuum lines | 39 Vent line for regulating valve | |
| 31 Vacuum connection at intake pipe | 40 Vacuum element for center jets (flap "closed") | |
| | 41 Vacuum element for legroom flaps (flaps "open") | |



Function diagram 6

Pushbutton switch at "BI-LEVEL", "ON/OFF" switch refrigerant compressor at "ON", regulating valve in position max. "cooling" (recirculated air), coolant temperature $> 40^{\circ}\text{C}$ ($> 104^{\circ}\text{F}$), (temperature switch [35] without influence)

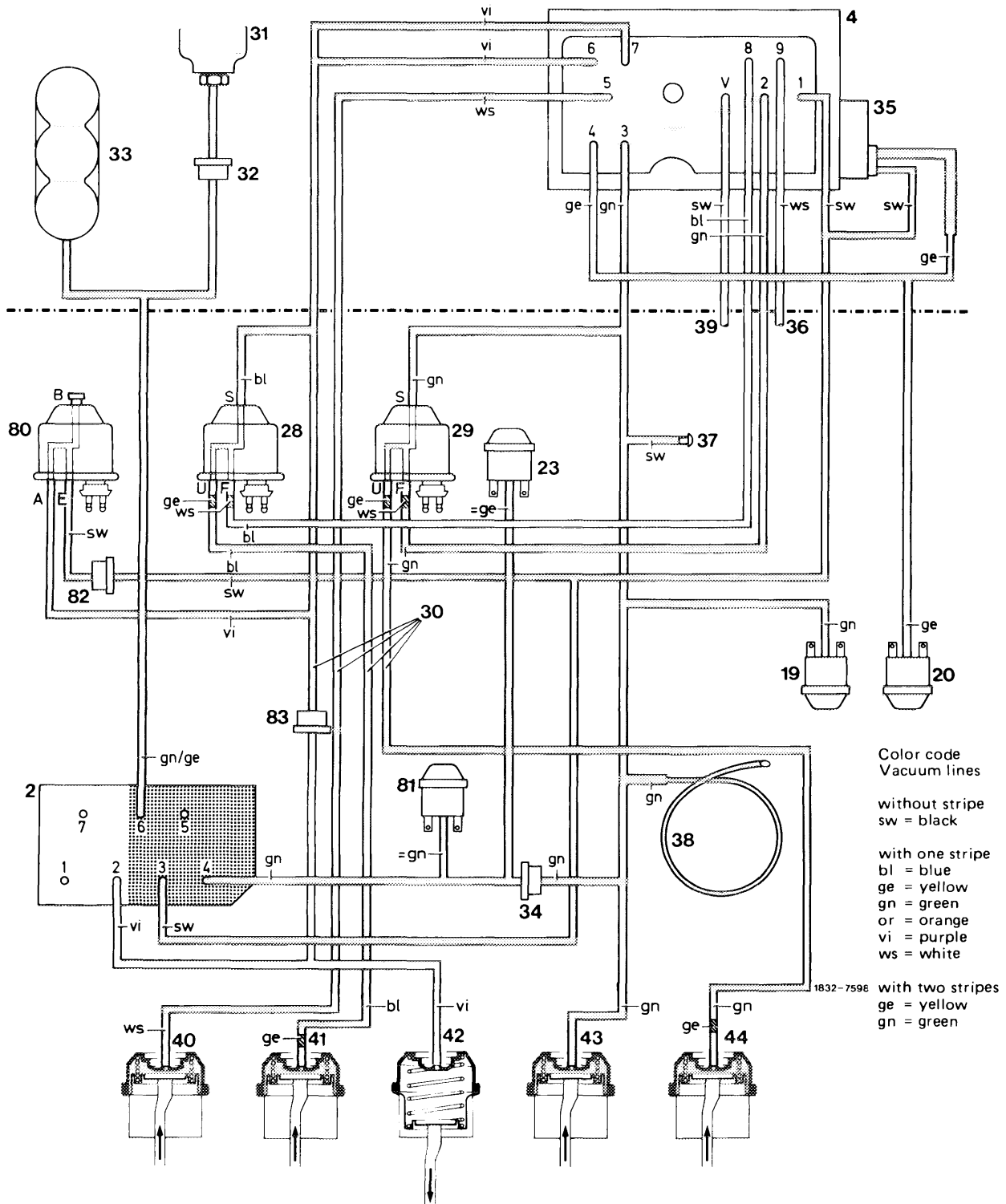
- | | | |
|---|--|--|
| 2 Pushbutton switch | 32 Check valve | 42 Vacuum element for defroster jets (flaps "open" with leak air portion) |
| 4 Regulating valve | 33 Vacuum reservoir | 43 Vacuum element for main air flap (flap "open") |
| 19 Vacuum switch (main switch, green) | 34 Check valve | 44 Vacuum element for fresh air-recirculated air flap (flap in position recirculated air 20 % fresh air/80 % recirculated air) |
| 20 Vacuum switch (refrigerant compressor, yellow) | 35 Temperature switch | 80 Switchover valve "BI-LEVEL" |
| 23 Vacuum switch for refrigerant compressor (at "BI-LEVEL" only) | 36 Vent line for legroom flaps | 81 Vacuum switch (at "BI-LEVEL" only) |
| 28 Switchover valve (legroom flaps) | 37 Vacuum connection for tester | 82 Check valve |
| 29 Switchover valve (fresh air-recirculating air changeover switch) | 38 Specified leak point | 83 Check valve |
| 30 Vacuum lines | 40 Vacuum element for center jets (flap "open") | |
| 31 Vacuum connection at intake pipe | 41 Vacuum element for legroom flaps (flaps "open") | |



Function diagram 7

Pushbutton switch at "BI-LEVEL", "ON/OFF" switch refrigerant compressor at "OFF", regulating valve in position max. "cooling" (fresh air), coolant temperature $< 40^{\circ}\text{C}$ ($< 104^{\circ}\text{F}$) (temperature switch [35] without influence)

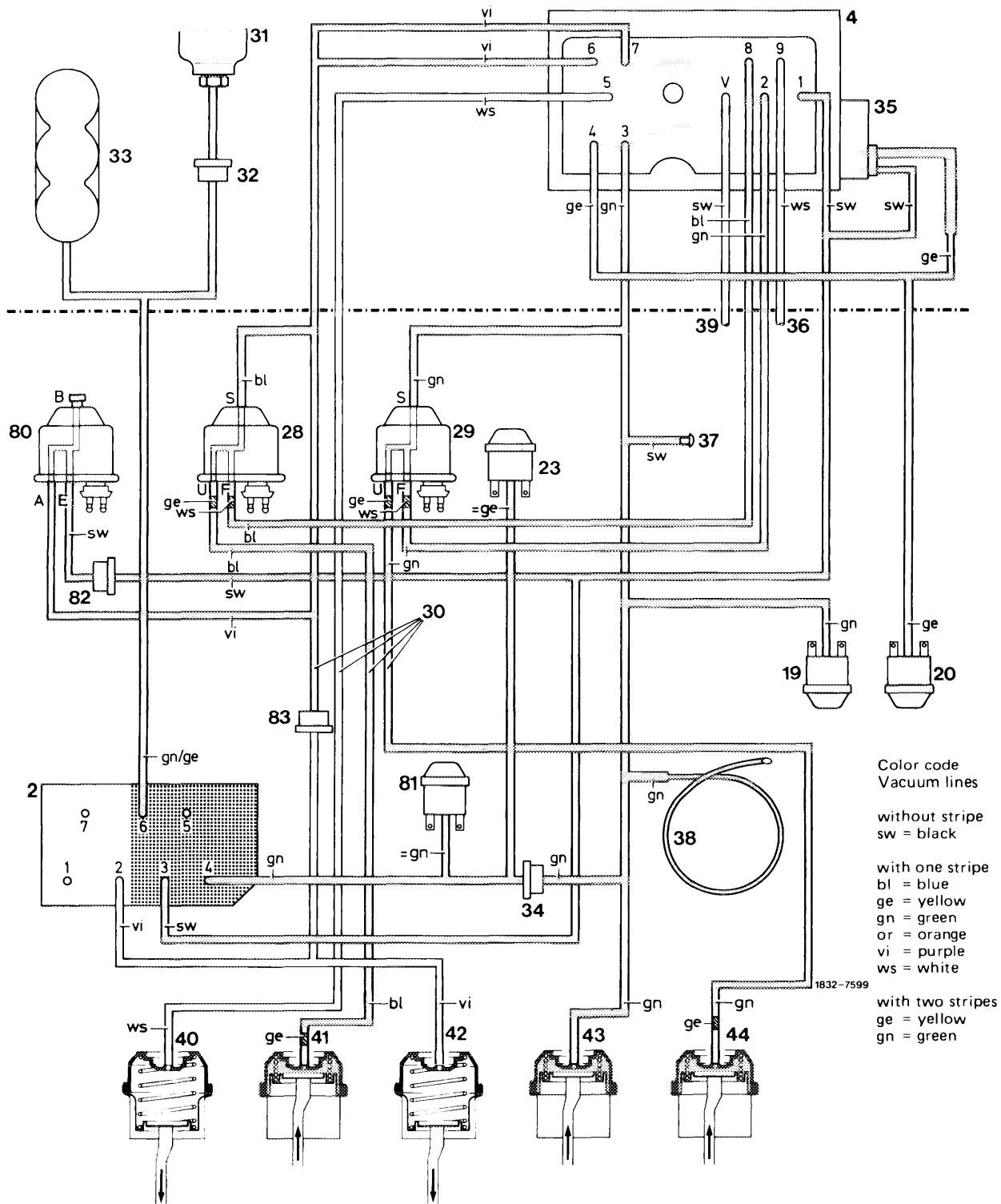
- | | | |
|--|--|--|
| 2 Pushbutton switch | 32 Check valve | 42 Vacuum element for defroster jets (flaps "open") |
| 4 Regulating valve | 33 Vacuum reservoir | 43 Vacuum element for main air flap (flap "open") |
| 19 Vacuum switch (main switch, green) | 34 Check valve | 44 Vacuum element for fresh air-recirculated air flap (flap in position "fresh air") |
| 20 Vacuum switch (refrigerant compressor, yellow) | 35 Temperature switch | 80 Switchover valve "BI-LEVEL" |
| 23 Vacuum switch for refrigerant compressor (at "BI-LEVEL" only) | 36 Vent line for legroom flaps | 81 Vacuum switch (at "BI-LEVEL" only) |
| 28 Switchover valve (legroom flaps) | 37 Vacuum connection for tester | 82 Check valve |
| 29 Switchover valve (fresh air-recirculated air flap) | 38 Specified leak point | 83 Check valve |
| 30 Vacuum lines | 39 Vent line for regulating valve | |
| 31 Vacuum connection at intake pipe | 40 Vacuum element for center jets (flap "open") | |
| | 41 Vacuum element for legroom flaps (flaps "open") | |



Function diagram 8

Pushbutton switch at "BI-LEVEL", "ON/OFF" switch refrigerant compressor at "ON", regulating valve in position "cooling", coolant temperature $< 40^{\circ}\text{C}$ ($< 104^{\circ}\text{F}$)
(temperature switch [35] without influence)

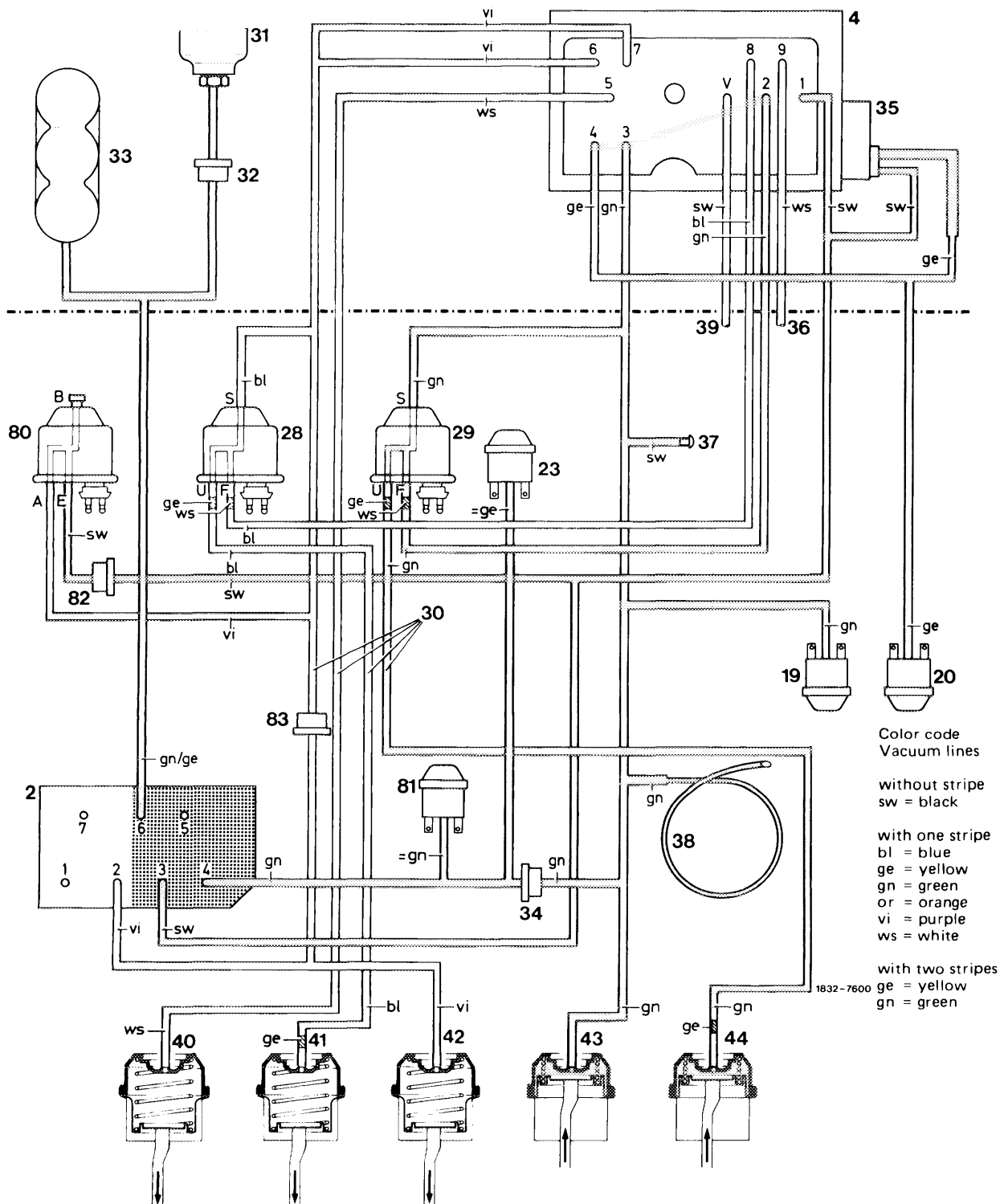
- | | | |
|--|--|--|
| 2 Pushbutton switch | 32 Check valve | 42 Vacuum element for defroster jets (flaps "open") |
| 4 Regulating valve | 33 Vacuum reservoir | 43 Vacuum element for main air flap (flap "open") |
| 19 Vacuum switch (main switch, green) | 34 Check valve | 44 Vacuum element for fresh air-recirculated air flap (flap in position "fresh air") |
| 20 Vacuum switch (refrigerant compressor, yellow) | 35 Temperature switch | 80 Switchover valve "BI-LEVEL" |
| 23 Vacuum switch for refrigerant compressor (at "BI-LEVEL" only) | 36 Vent line for legroom flaps | 81 Vacuum switch (at "BI-LEVEL" only) |
| 28 Switchover valve (legroom flaps) | 37 Vacuum connection for tester | 82 Check valve |
| 29 Switchover valve (fresh air-recirculated air flap) | 38 Specified leak point | 83 Check valve |
| 30 Vacuum lines | 39 Vent line for regulating valve | |
| 31 Vacuum connection at intake pipe | 40 Vacuum element for center jets (flap "open") | |
| | 41 Vacuum element for legroom flaps (flaps "open") | |



Function diagram 9

Pushbutton switch at "BI-LEVEL", "ON/OFF" switch refrigerant compressor at "ON", regulating valve in position "heating", coolant temperature $>40^{\circ}\text{C}$ ($>104^{\circ}\text{F}$), (temperature switch [35] without influence)

- | | | |
|--|--|--|
| 2 Pushbutton switch | 32 Check valve | 42 Vacuum element for defroster jets (flaps "open" with leak air portion) |
| 4 Regulating valve | 33 Vacuum reservoir | 43 Vacuum element for main air flap (flap "open") |
| 19 Vacuum switch (main switch, green) | 34 Check valve | 44 Vacuum element for fresh air-recirculated air flap (flap in position "fresh air") |
| 20 Vacuum switch (refrigerant compressor, yellow) | 35 Temperature switch | 80 Switchover valve "BI-LEVEL" |
| 23 Vacuum switch for refrigerant compressor (at "BI-LEVEL" only) | 36 Vent line for legroom flaps | 81 Vacuum switch (at "BI-LEVEL" only) |
| 28 Switchover valve (legroom flaps) | 37 Vacuum connection for tester | 82 Check valve |
| 29 Switchover valve (fresh air-recirculated air flap) | 38 Specified leak point | 83 Check valve |
| 30 Vacuum lines | 39 Vent line for regulating valve | |
| 31 Vacuum connection at intake pipe | 40 Vacuum element for center jets (flap "closed") | |
| | 41 Vacuum element for legroom flaps (flaps "open") | |



Function diagram 10

Pushbutton compressor at "DEF", "ON/OFF" switch refrigerant compressor at "ON", regulating valve in position "heating", coolant temperature $< 40\text{ }^{\circ}\text{C}$ ($< 104\text{ }^{\circ}\text{F}$), (temperature switch [35] without influence)

- | | | |
|--|--|--|
| 2 Pushbutton switch | 32 Check valve | 42 Vacuum element for defroster jets (flaps "open") |
| 4 Regulating valve | 33 Vacuum reservoir | 43 Vacuum element for main air flap (flap "open") |
| 19 Vacuum switch (main switch, green) | 34 Check valve | 44 Vacuum element for fresh air-recirculated air flap (flap in position "fresh air") |
| 20 Vacuum switch (refrigerant compressor, yellow) | 35 Temperature switch | 80 Switchover valve "BI-LEVEL" |
| 23 Vacuum switch for refrigerant compressor (at "BI-LEVEL" only) | 36 Vent line for legroom flaps | 81 Vacuum switch (at "BI-LEVEL" only) |
| 28 Switchover valve (legroom flaps) | 37 Vacuum connection for tester | 82 Check valve |
| 29 Switchover valve (fresh air-recirculated air flap) | 38 Specified leak point | 83 Check valve |
| 30 Vacuum lines | 40 Vacuum element for center jets (flap "closed") | |
| 31 Vacuum connection at intake pipe | 41 Vacuum element for legroom flaps (flaps "closed") | |