

INDEX

INDEX - Alphabetical Listing of Electrical Circuits

	SCHEMATIC	COMPONENT LOCATION		SCHEMATIC	COMPONENT LOCATION
Automatic Antenna	134	202	Lights (continued)		
Automatic Climate Control ...	128		—License	113	204
Auxiliary Fan	127	201	—Marker	113	204
Charging System	108	202	—Park	112	204
Cigar Lighter	134	202	—Stop	117	207
Clock	121	208	—Tail	112	204
Cruise Control	117	207	—Trunk	113	204
Engine Overload Protection ..	110	201	—Turn Signal	115	207
Fuse Information	102		Power Distribution	104	204
Gauges	120	208	Power Windows	133	205
Ground Distribution	138		Pre-Glow System	106	205
Heated Seats	135	203	Radio	134	202
Horns	137	203	Rear Defogger (D/CD only) ..	131	205
Lights			Rear Defogger (TD only)	132	205
—Backup	109	201	Rear Wiper/Washer	130	206
—Center Console	126	202	Seat Backrest Locking System	136	206
—Courtesy	124	203	Sliding Roof	137	203
—Fog Lights	111	203	Start/Stop (Ignition Switch) .	107	206
—Glove Box	109	201	Transmission Kickdown	109	201
—Hazard	115	207	Warning Indicators	120	208
—Headlights	111	203	Warning System	119	208
—Instrument Cluster	126	208	Wiper/Washer	129	208

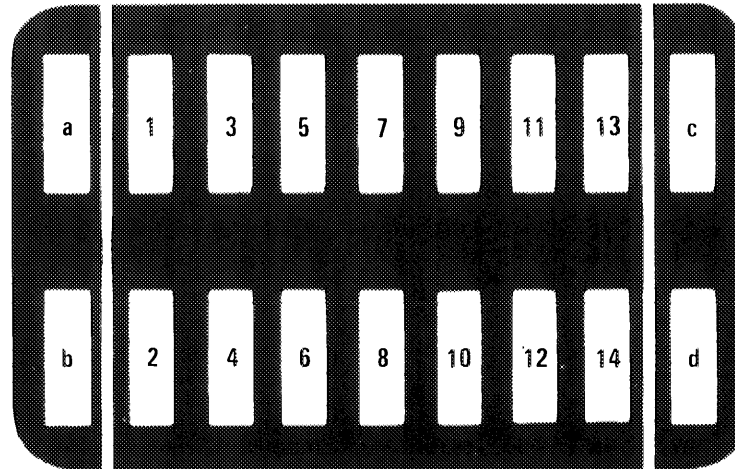
Fuse-Circuit List

Fuse		Circuits Protected	Page
No.	Amps (color)		
1	8(WT)	Center Console Illumination	126
		Lights: Marker/License	113
		Lights: Park/Tail (RH)	112
		Warning System	119
2	8(WT)	Automatic Antenna	134
		Clock	121
		Courtesy Lights	124
		Lights: Hazard	115
		Seat Backrest Locking System	136
		Trunk Light	113
		Warning System	119
3	8(WT)	Lights: Park/Tail (LH)	112
4	8(WT)	Radio	134
		Cigar Lighter	134
		Glove Box Light	109
4	*16(PK)	*With Heated Seats (Front)	135
	5		NOT USED
6	16(PK)	Headlights	111
		Rear Wiper/Washer (TD only)	130
		Wiper/Washer	129
7	8(WT)	Headlights (RH High Beam)	111
8	16(PK)	Automatic Climate Control	128

Fuse		Circuits Protected	Page
No.	Amps (color)		
9	8(WT)	Headlight (LH High Beam)	111
10	16(PK)	Rear Defogger (D & CD Only)	131
		Rear Defogger (TD Only)	132
		Engine Overload Protection	110
10	*25(BU)	*With Heated Seats (Rear)	135
	11	16(PK)	Headlights (RH Low Beam)/Fog Lights
12	8(WT)	Automatic Climate Control	128
		Auxiliary Fan	127
		Lights: Turn Signal/Hazard	115
		Power Windows	133
		Stoplights/Cruise Control	117
12	8(WT)	Warning Indicators/Gauges	120
		13	8(WT)
14	8(WT)	Backup Lights/Transmission Kickdown	109
		Horns	137
		Warning System	119
a	16(PK)	Power Windows (RF/LR)	133
b	16(PK)	Power Windows (LF/RR)	133
c	16(PK)	Auxiliary Fan	127
d	16(PK)	Sliding Roof	137
In-Line	80	Pre-Glow System (Part of Glow Plug Control Relay)	106

102
300
D/CD/TD

FUSE BOX



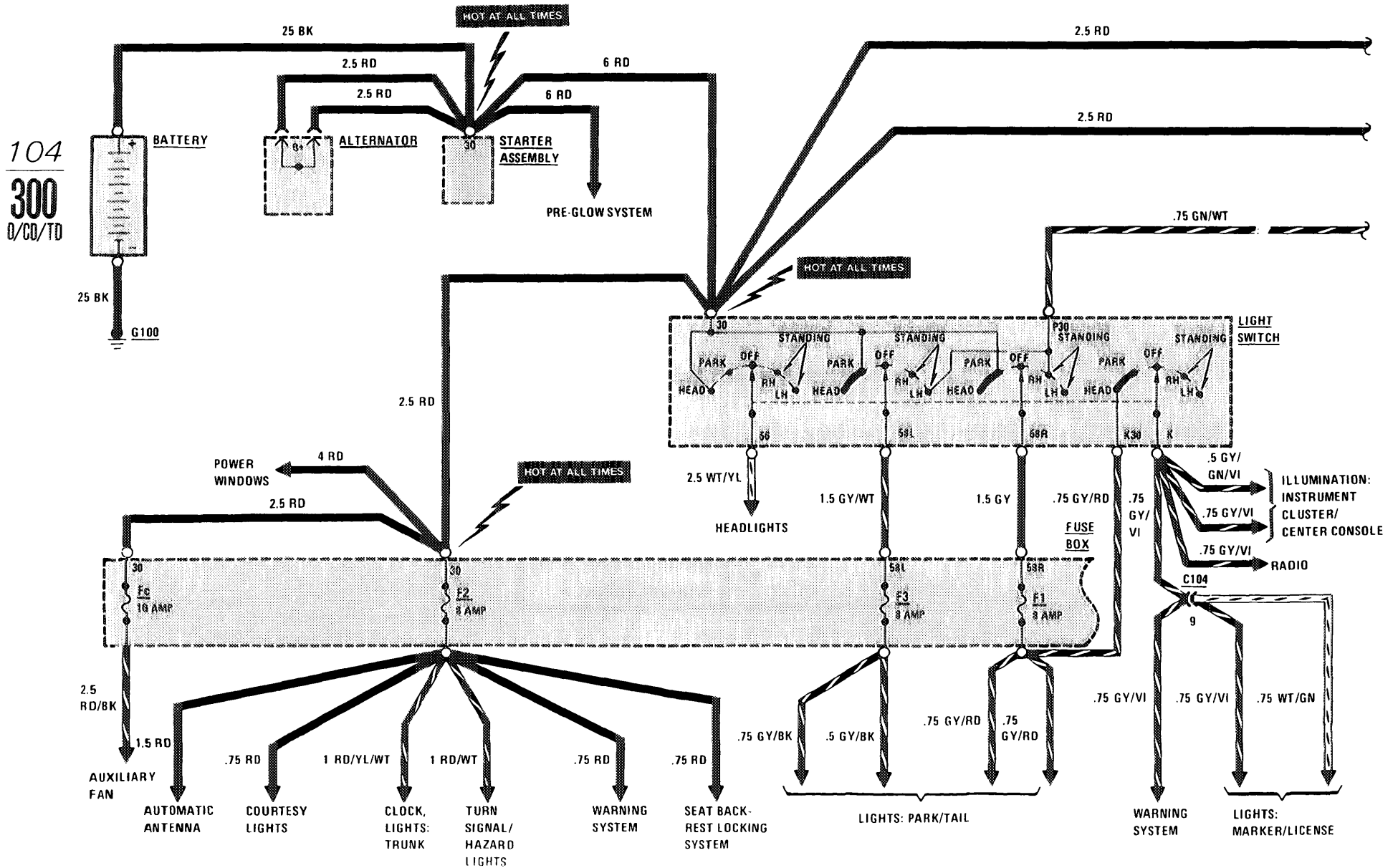
FUSE BOX

(AS MOUNTED NEAR BRAKE BOOSTER)

RELAY CODE	RELAY USE
6	Auxiliary Fan Relay
10	Window Relay

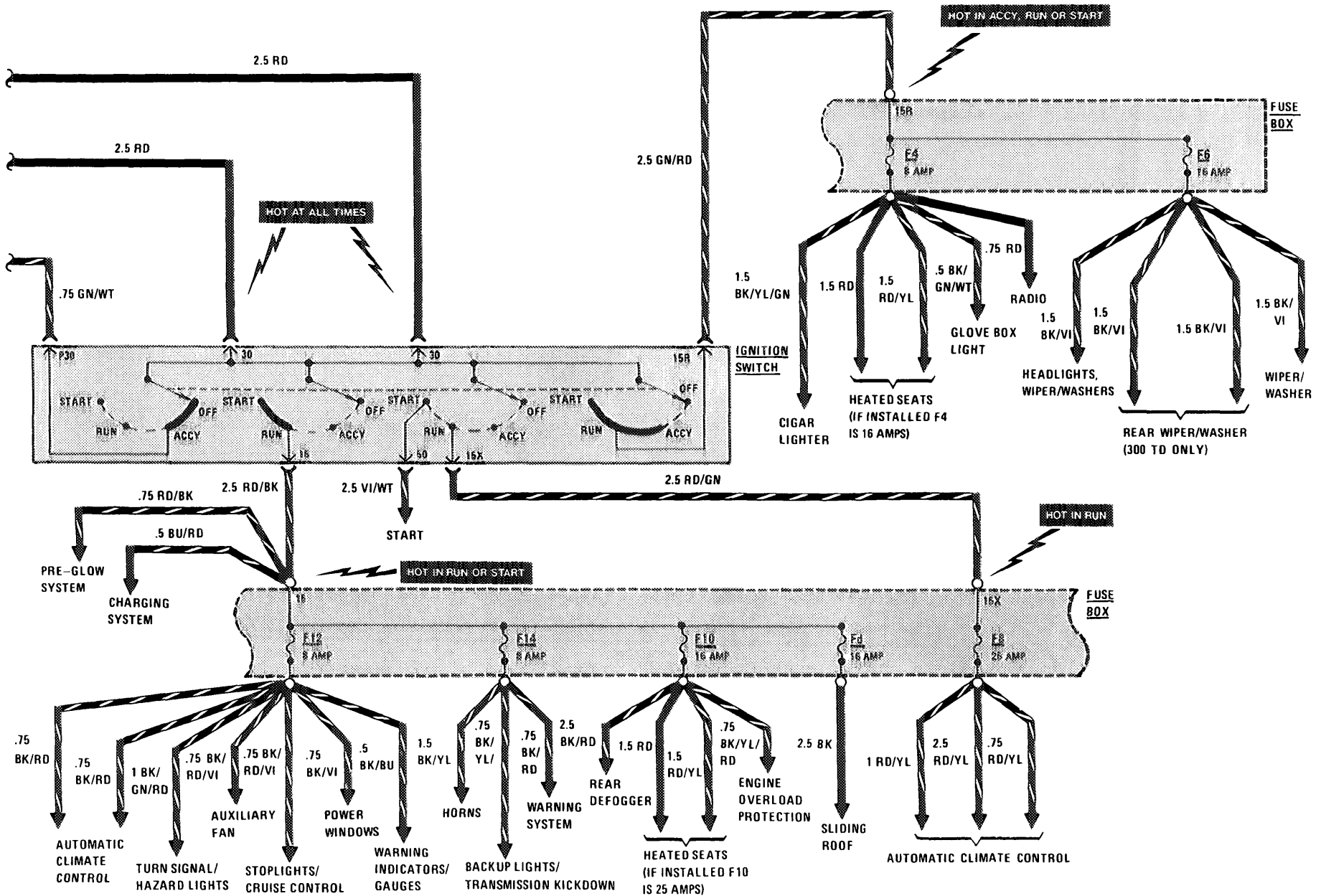
POWER DISTRIBUTION

(For Component Locations See Page 204)



POWER DISTRIBUTION

(For Component Locations See Page 204)

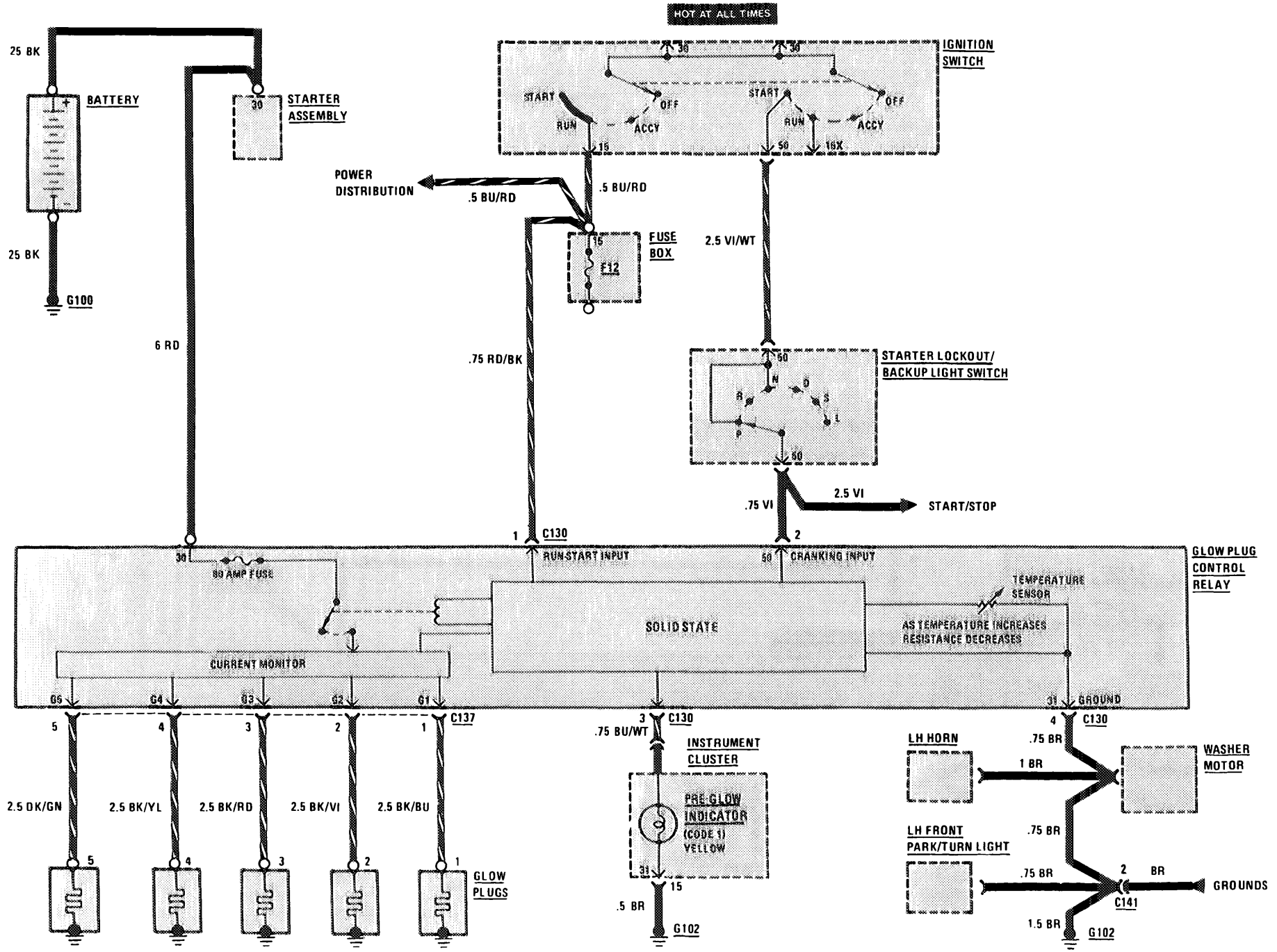


105
300
D/CD/TD

PRE-GLOW SYSTEM

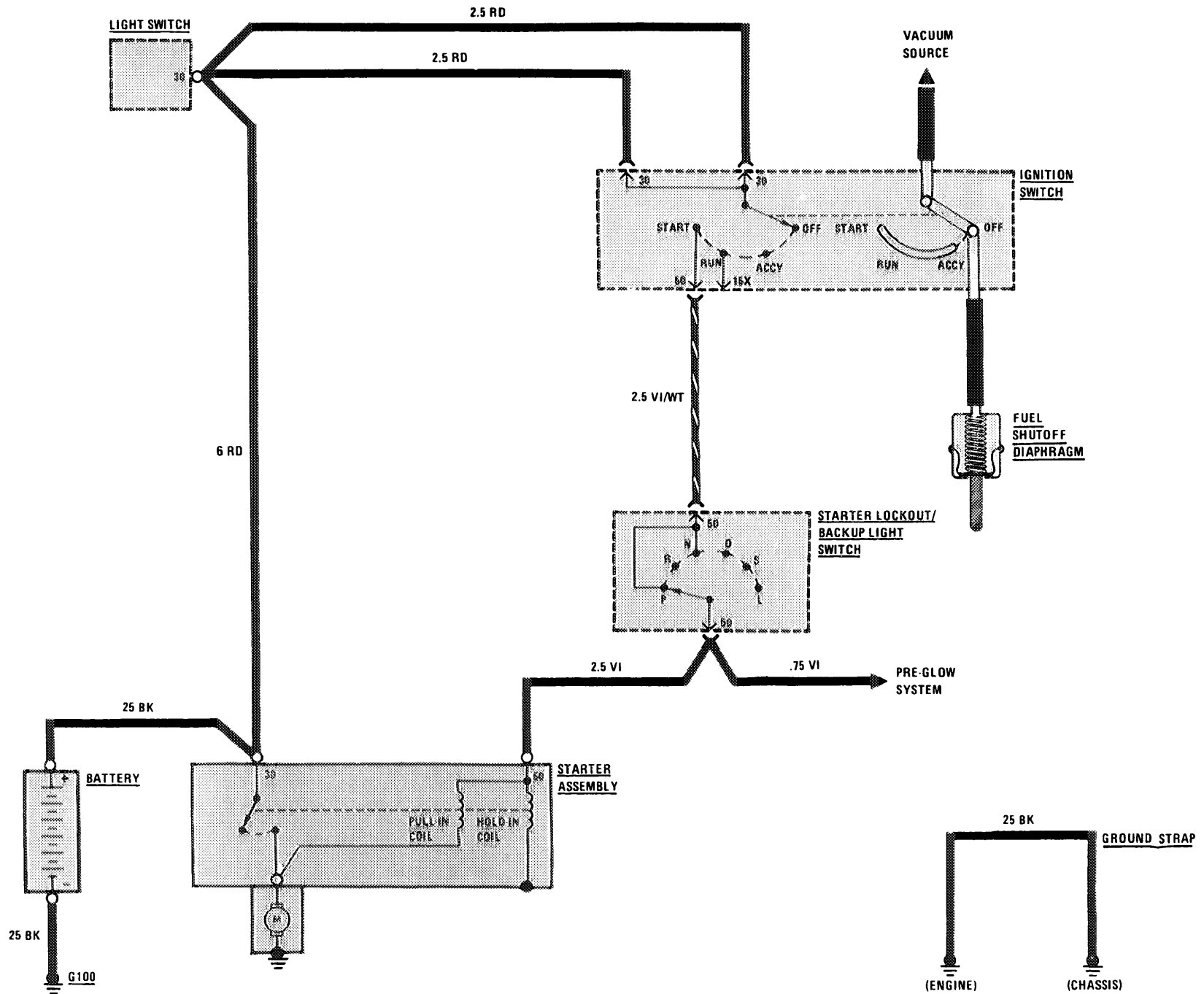
(For Component Locations See Page 205)

106
300
D/CB/TD



START/STOP (IGNITION SWITCH)

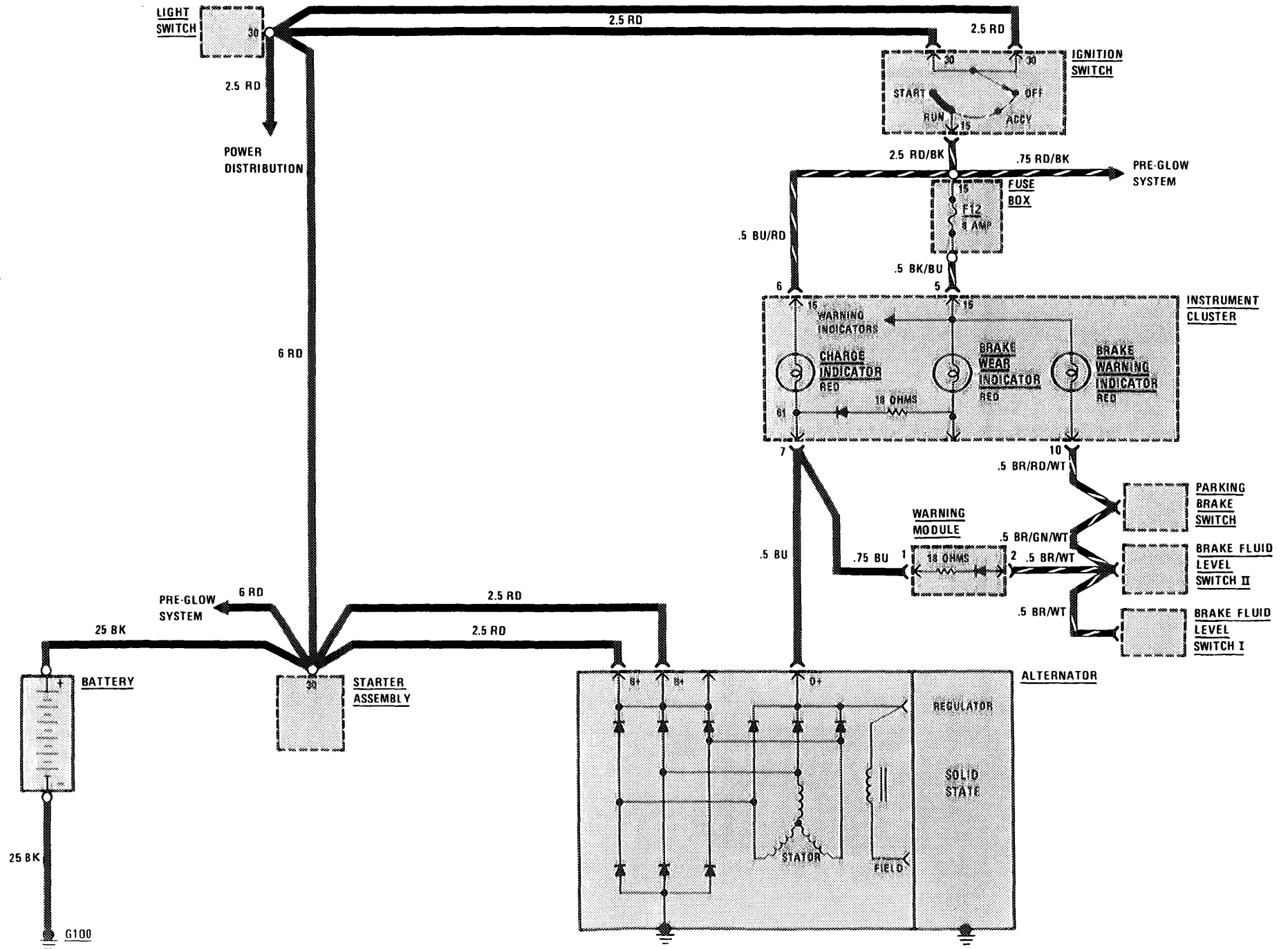
(For Component Locations See Page 206)



CHARGING SYSTEM

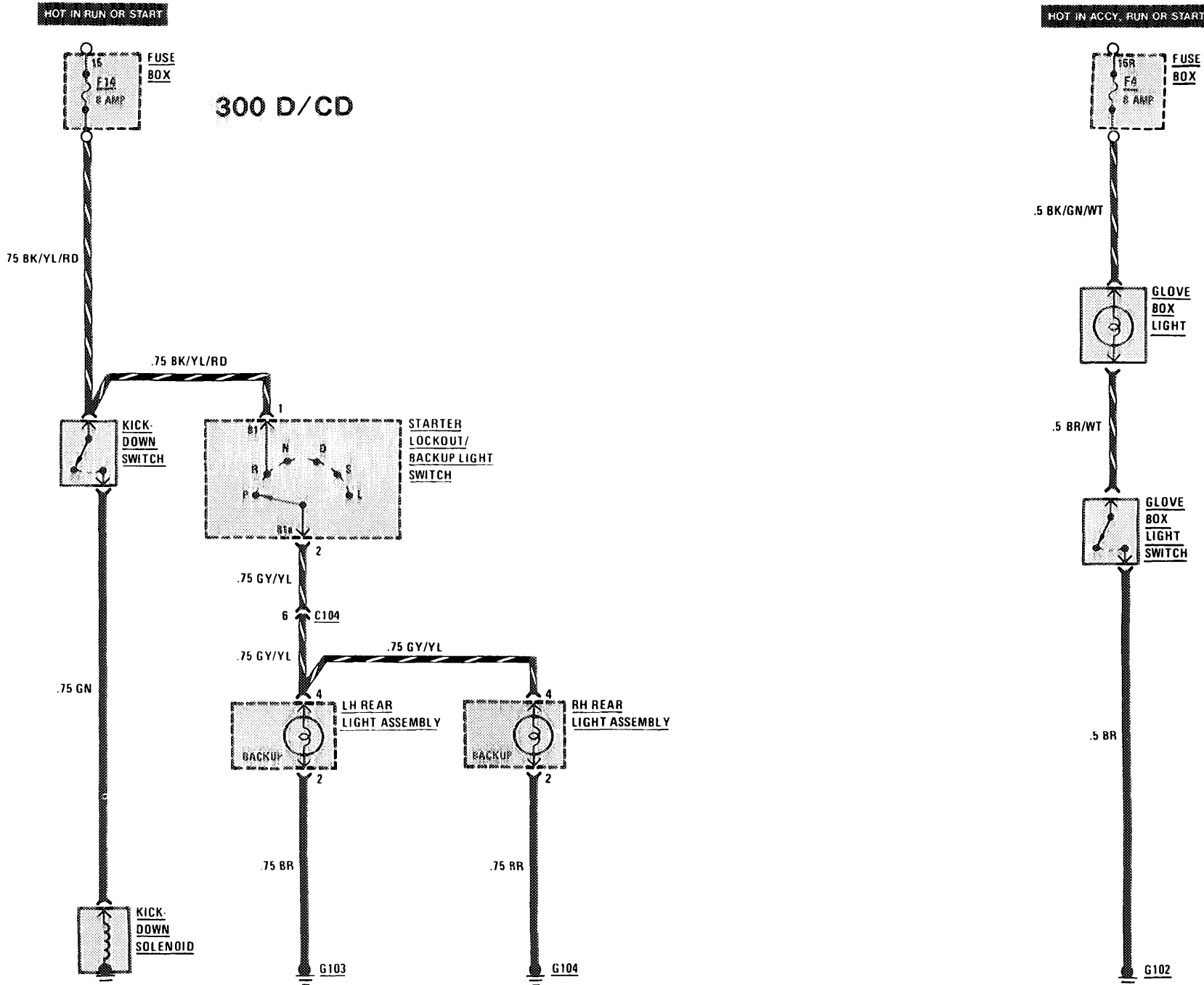
(For Component Locations See Page 202)

108
300
D/CD/TD



TRANSMISSION KICKDOWN/BACKUP LIGHTS/ GLOVE BOX LIGHT

(For Component Locations See Page 201)

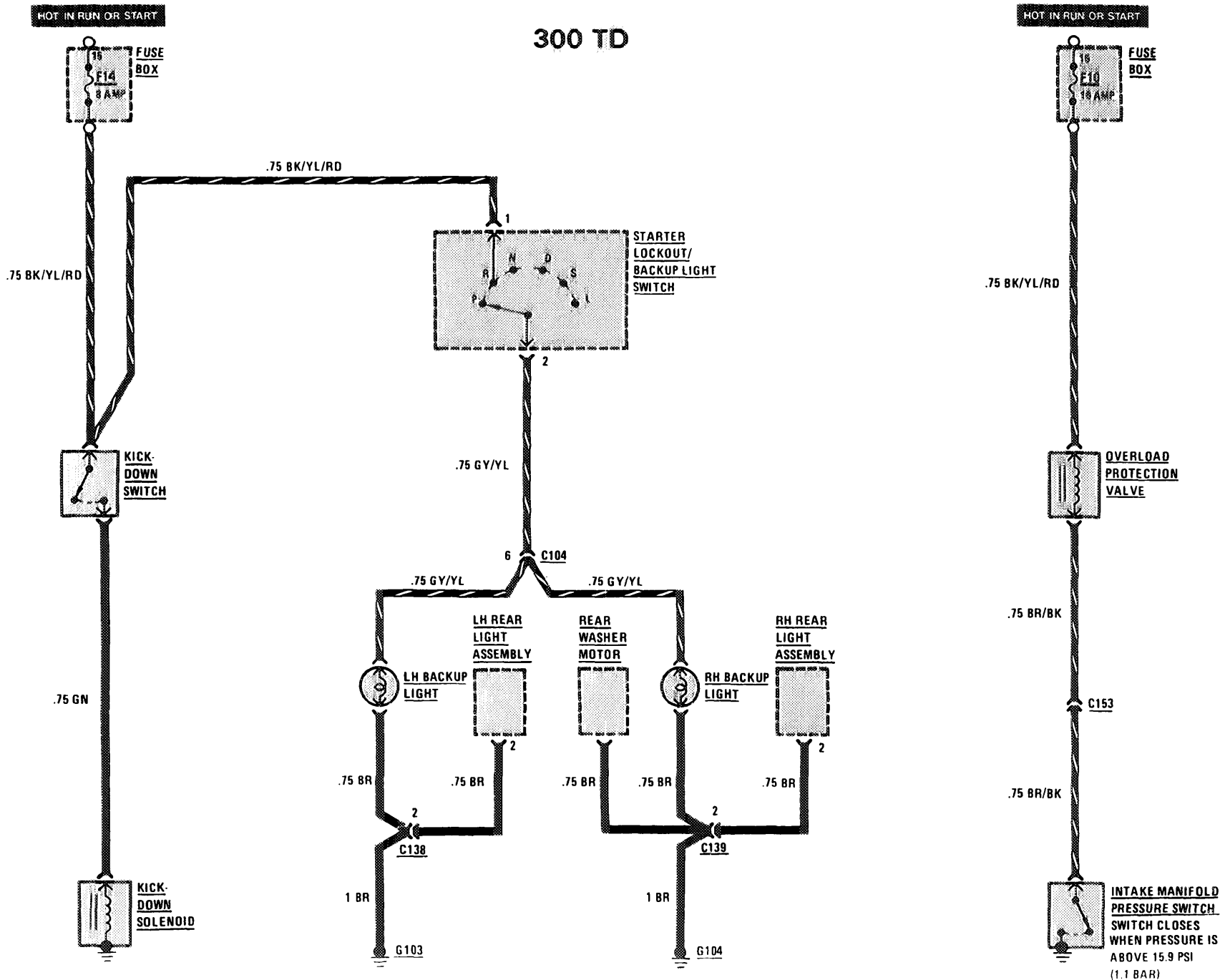


TRANSMISSION KICKDOWN/BACKUP LIGHTS/ENGINE OVERLOAD PROTECTION

(For Component Locations See Page 201)

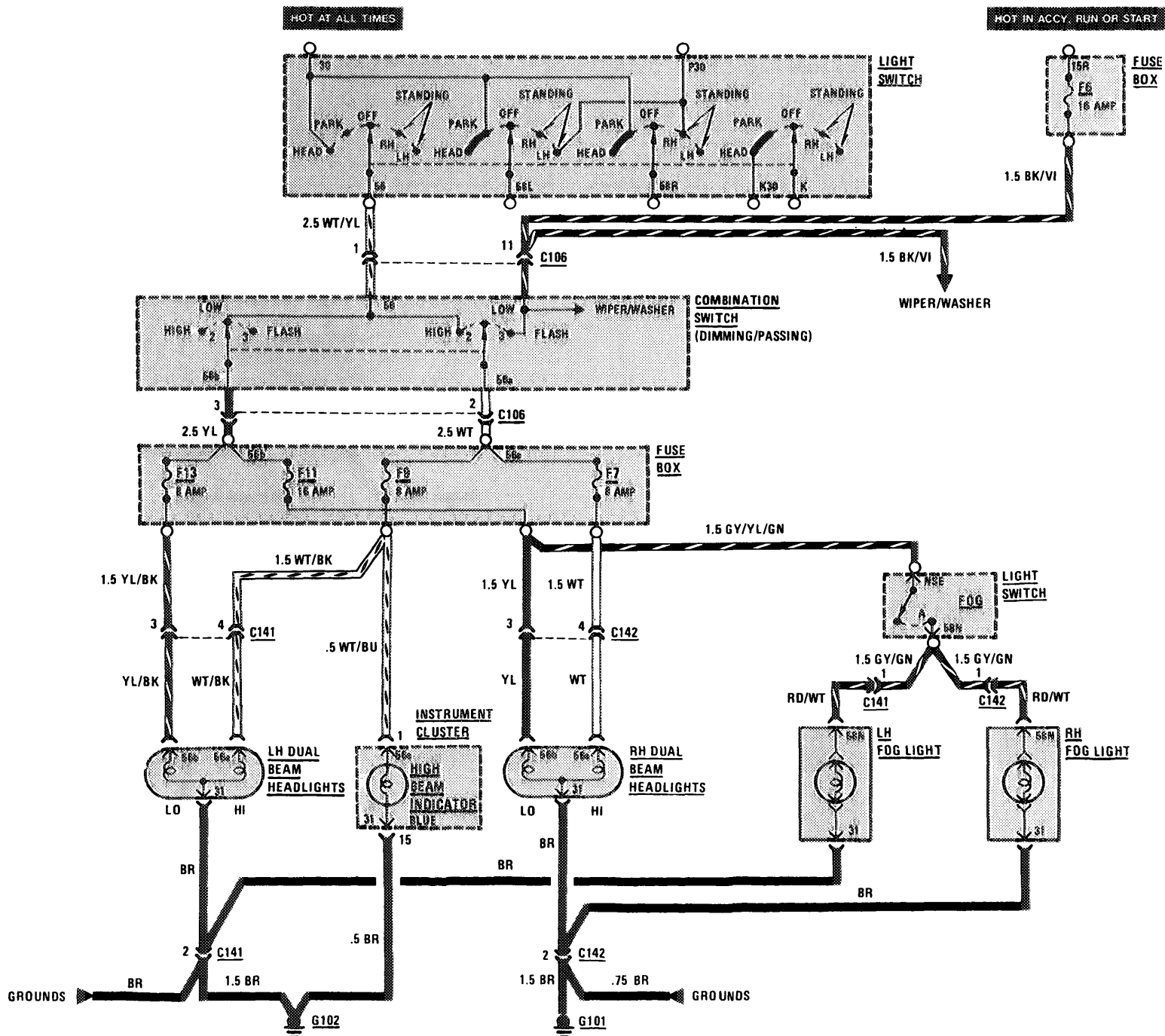
110
300
Q/CO/TD

300 TD



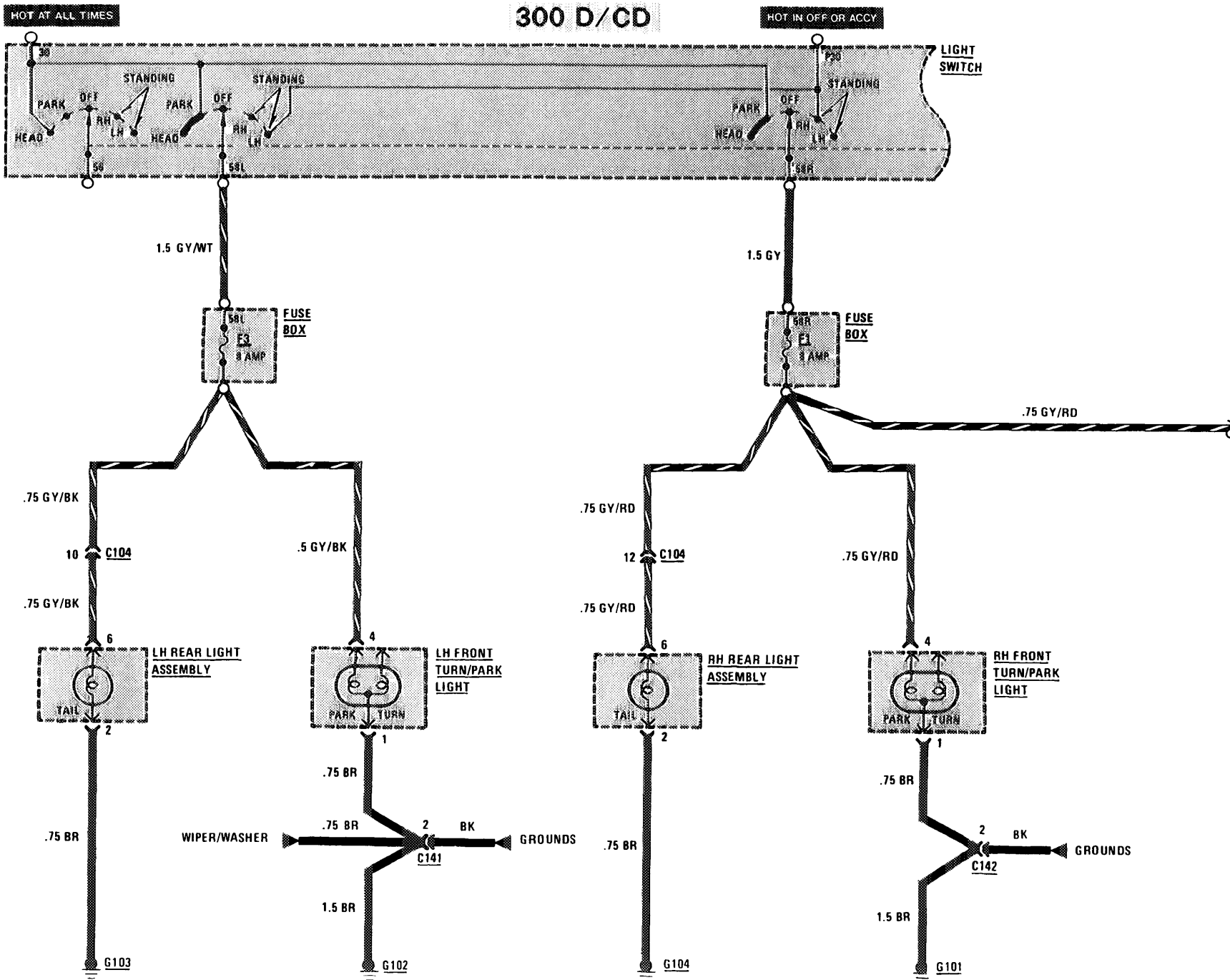
HEADLIGHTS/FOG LIGHTS

(For Component Locations See Page 203)



LIGHTS: PARK/TAIL

(For Component Locations See Page 204)

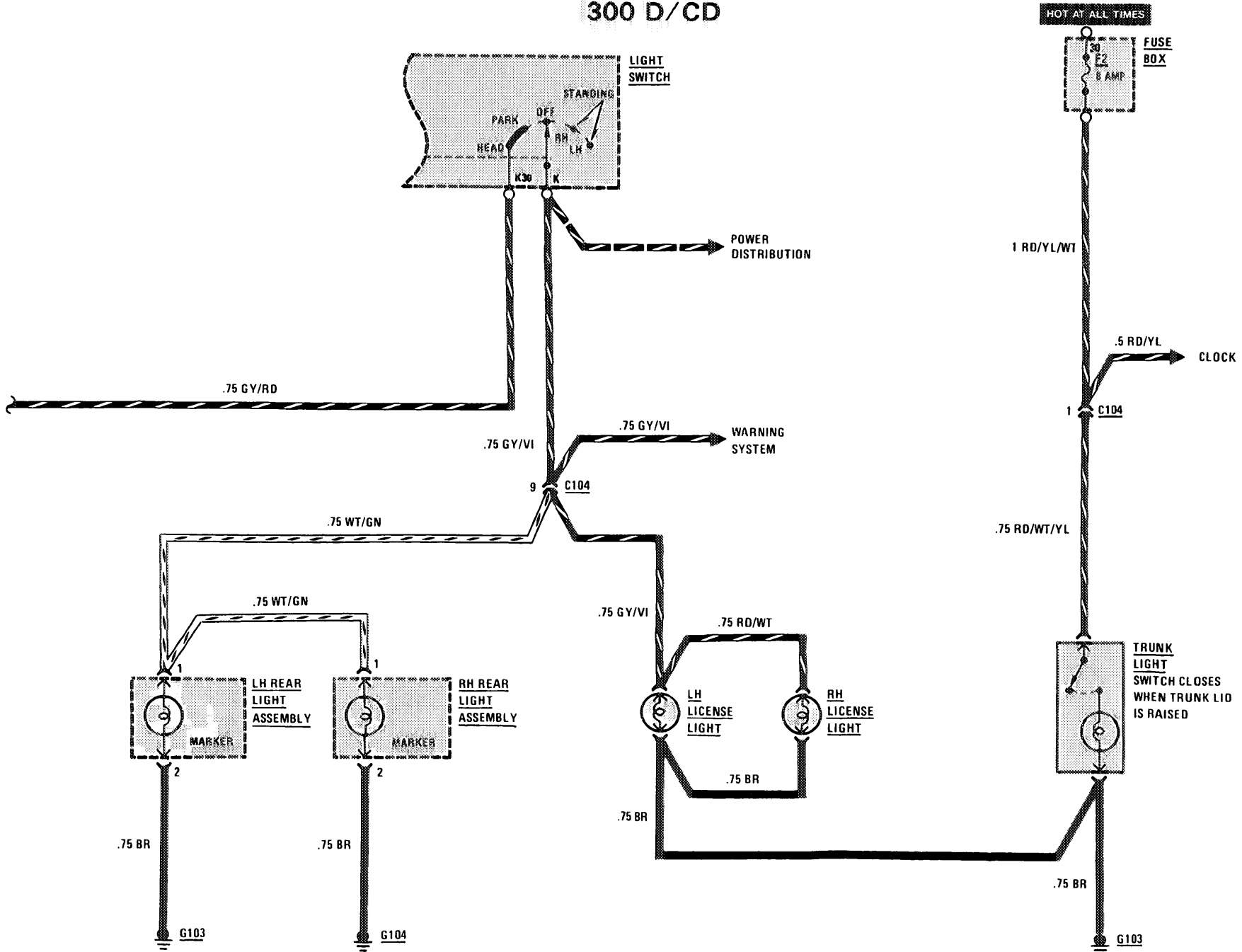


112
300
D/CD/TO

LIGHTS: MARKER/LICENSE/TRUNK

(For Component Locations See Page 204)

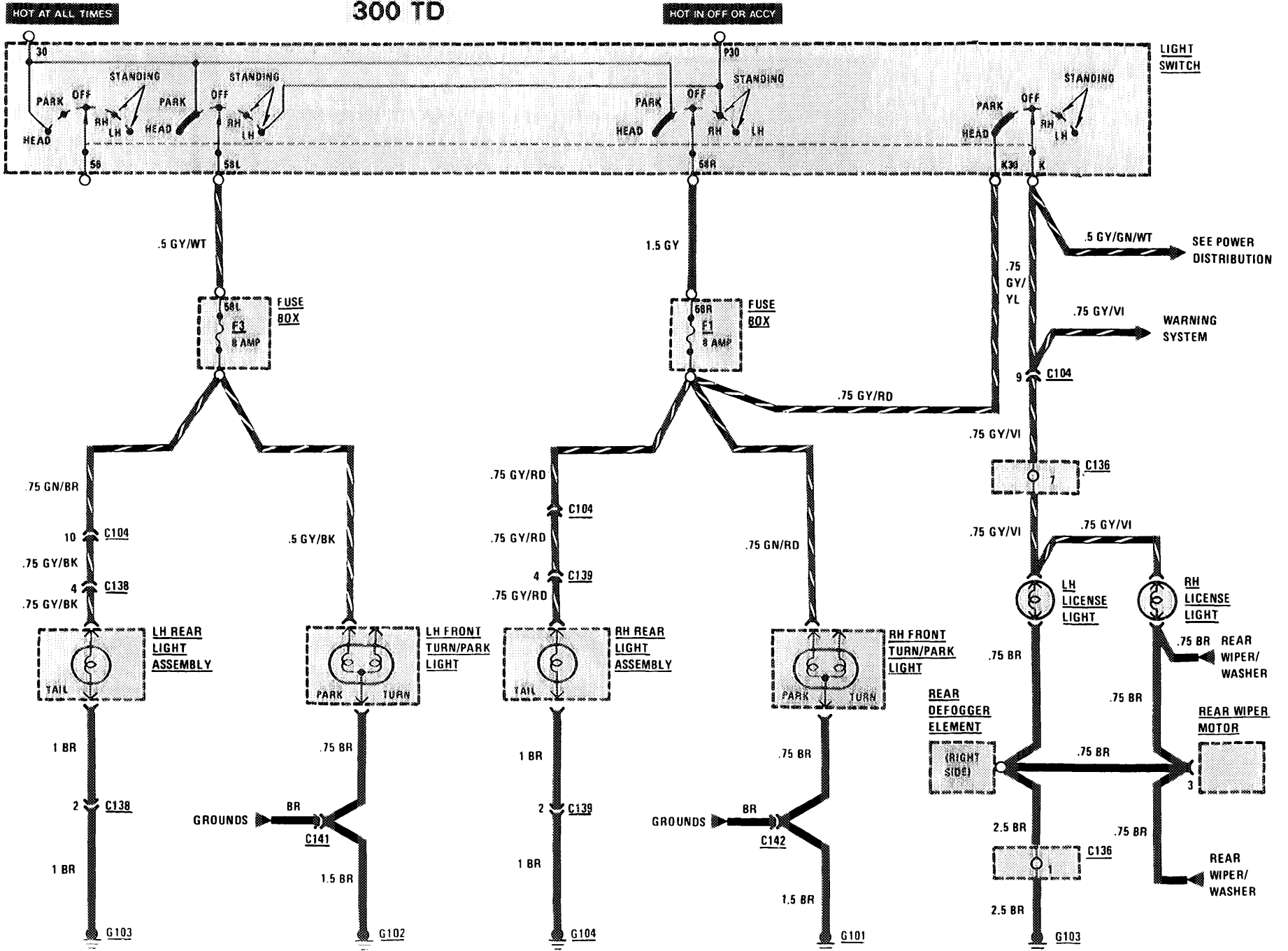
300 D/CD



LIGHTS: PARK/TAIL/LICENSE

(For Component Locations See Page 204)

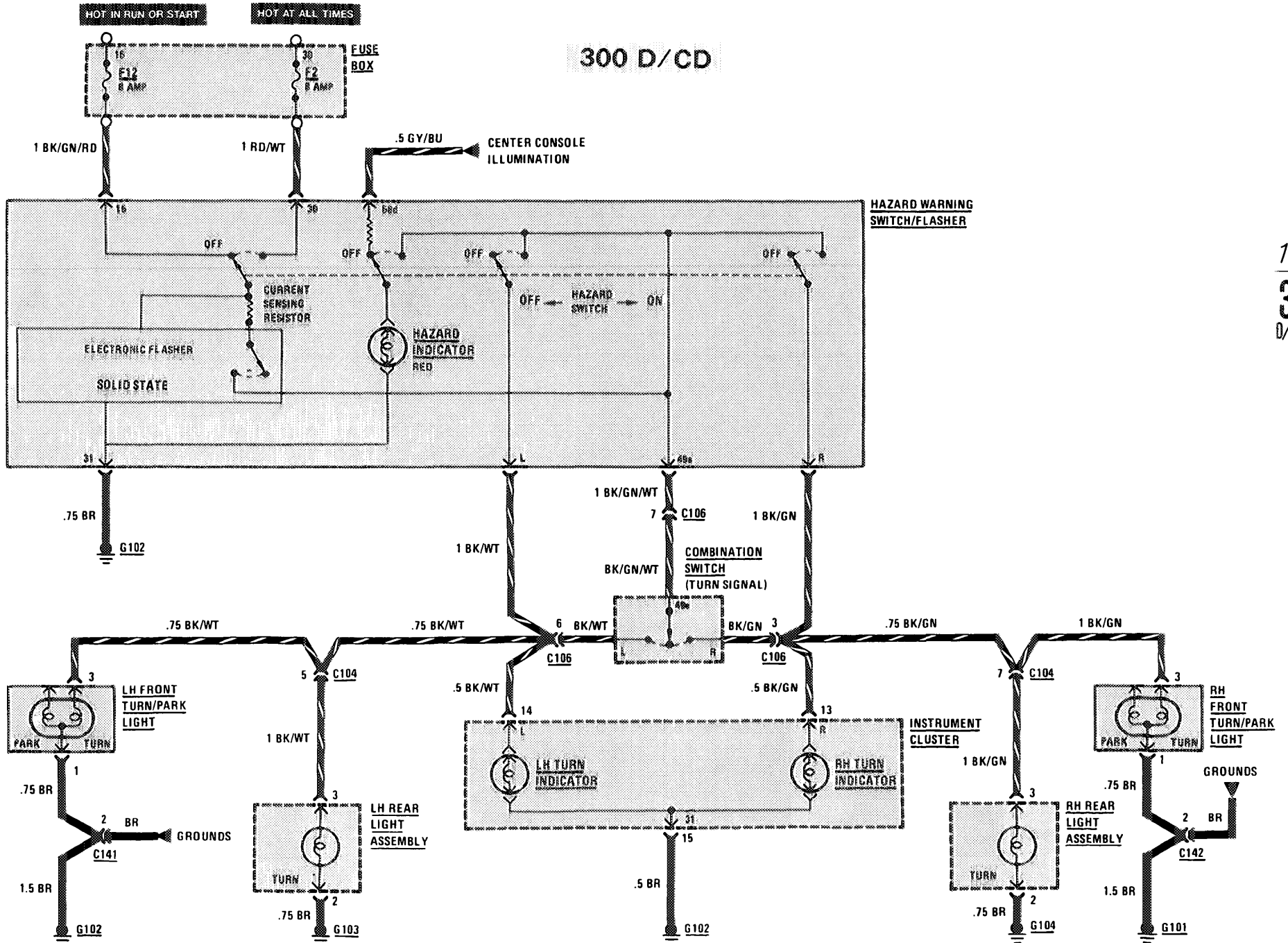
114
300
O/CO/TD



TURN SIGNAL/HAZARD LIGHTS

(For Component Locations See Page 207)

300 D/CD



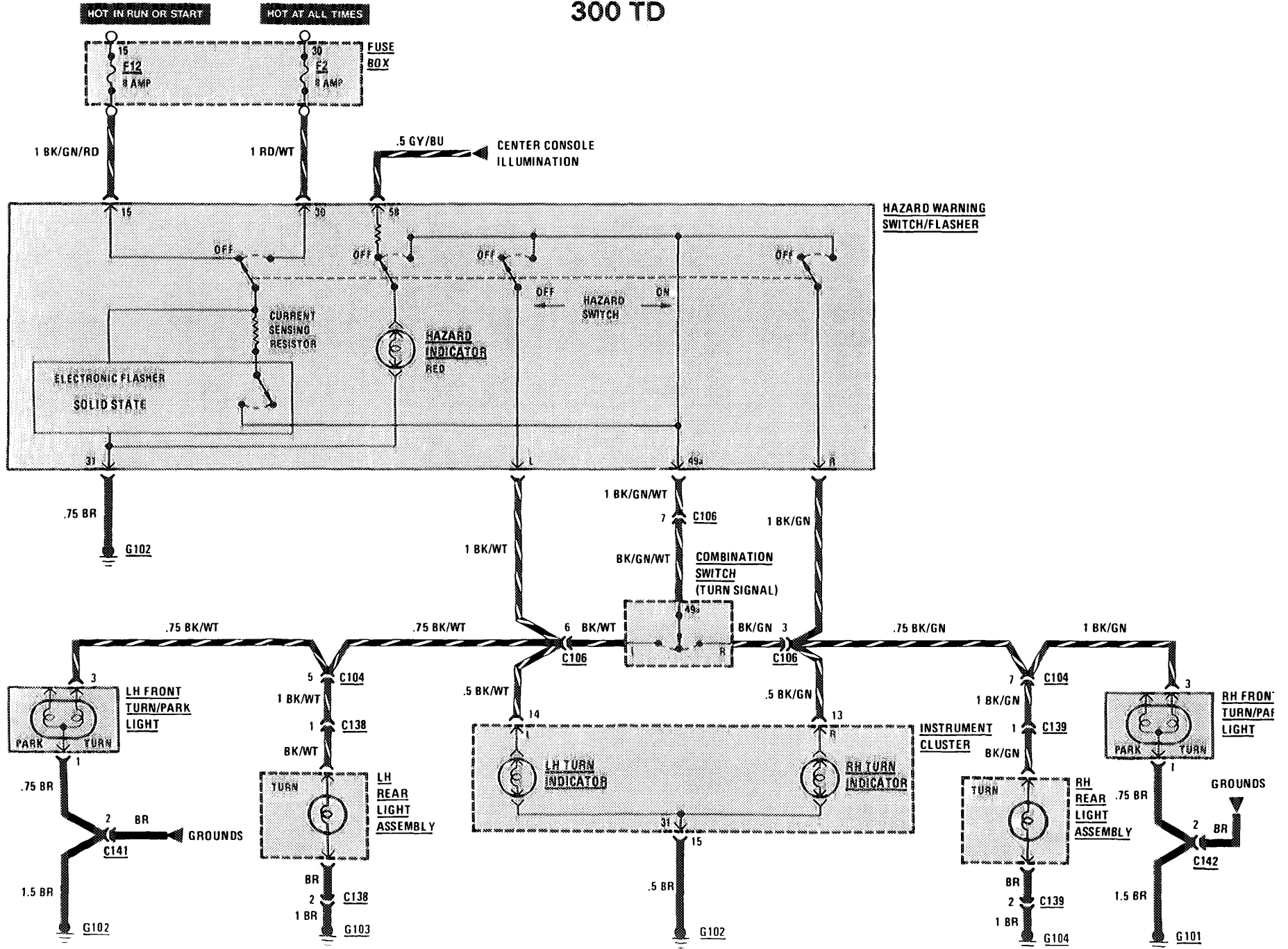
115
300
D/CD/TD

TURN SIGNAL/HAZARD LIGHTS

(For Component Locations See Page 207)

300 TD

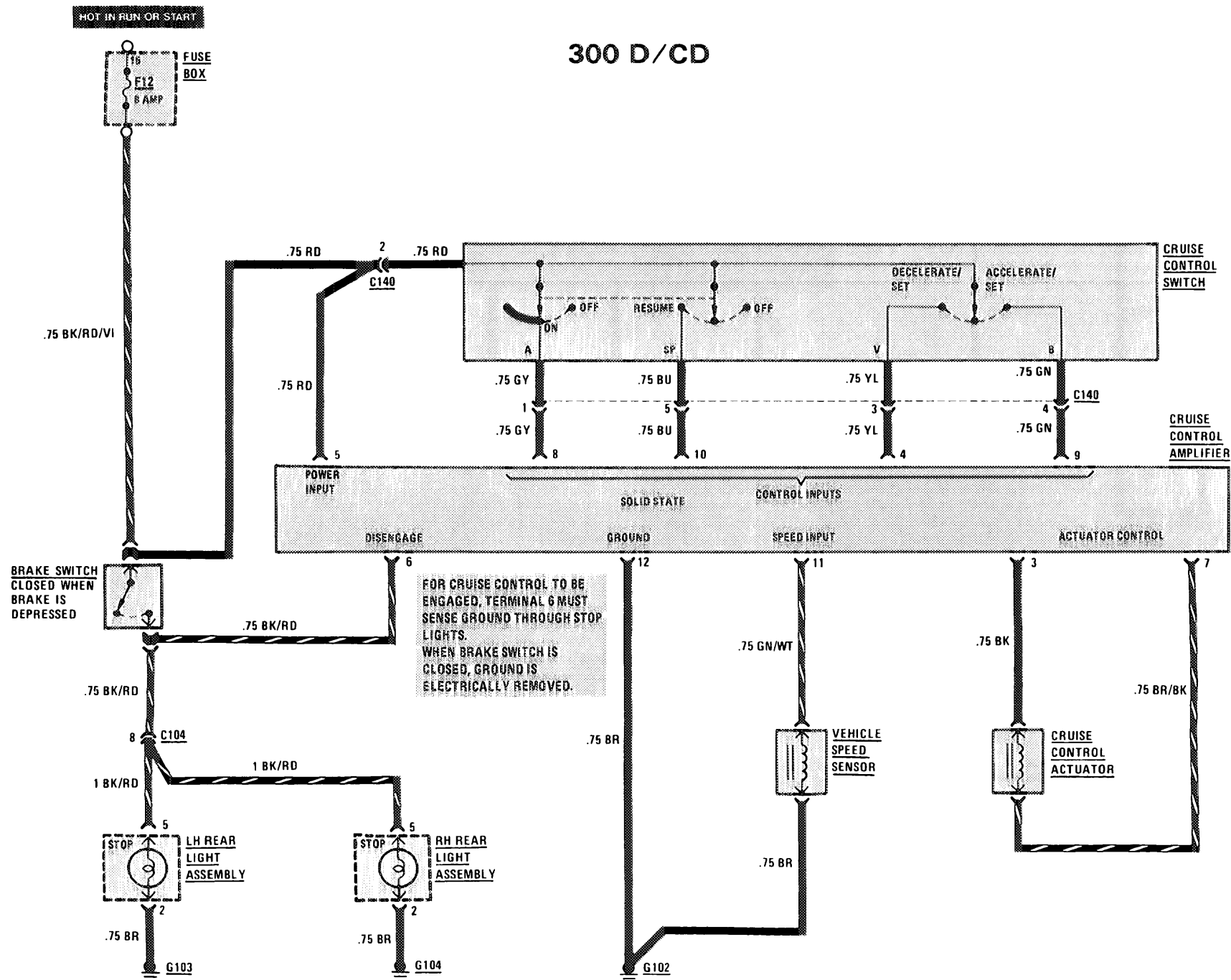
116
300
Q/CO/TD



STOPLIGHTS/CRUISE CONTROL

(For Component Locations See Page 207)

300 D/CD



117
300
D/CD/TD

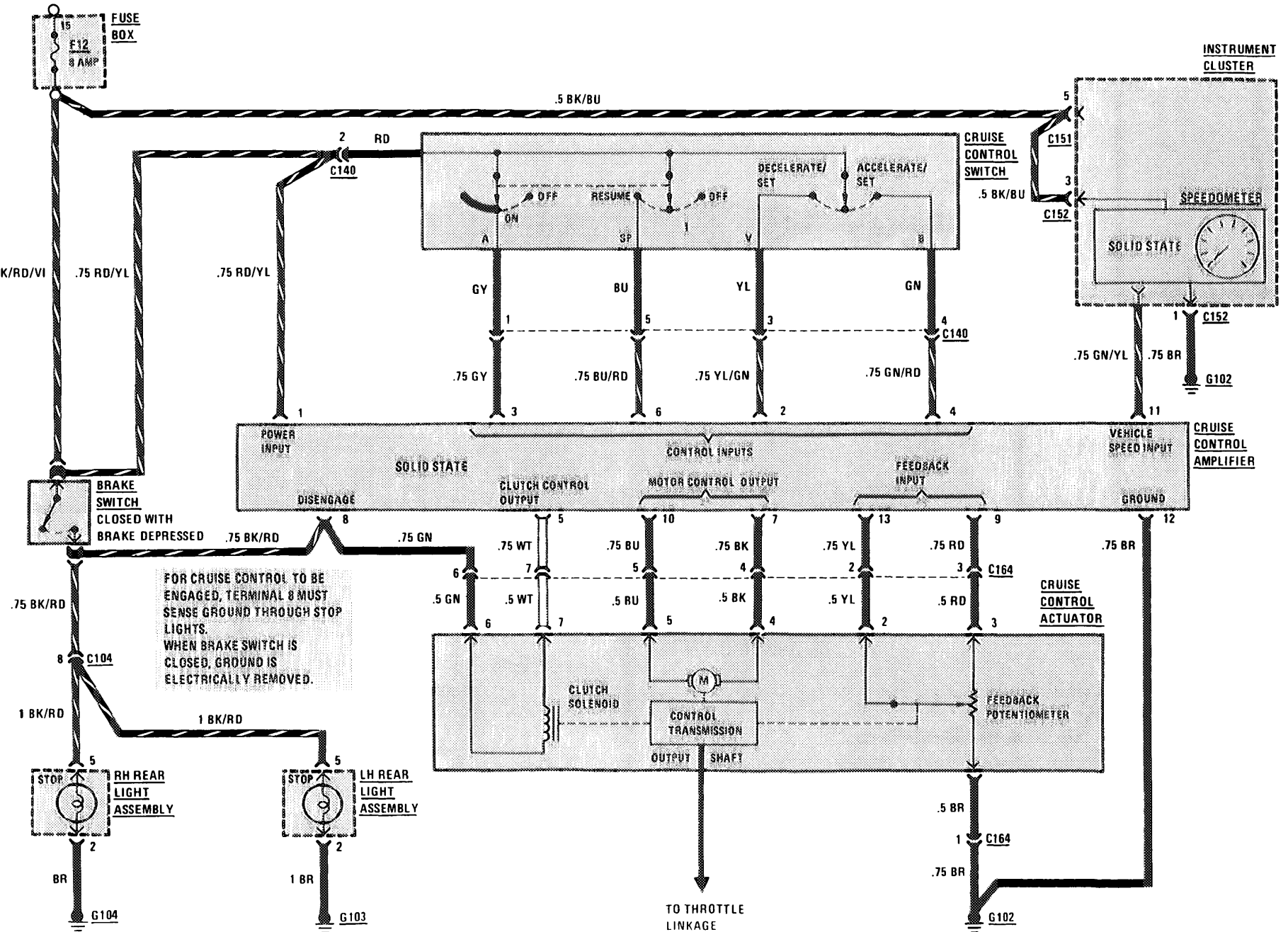
STOPLIGHTS/CRUISE CONTROL

(For Component Locations See Page 207)

300 TD

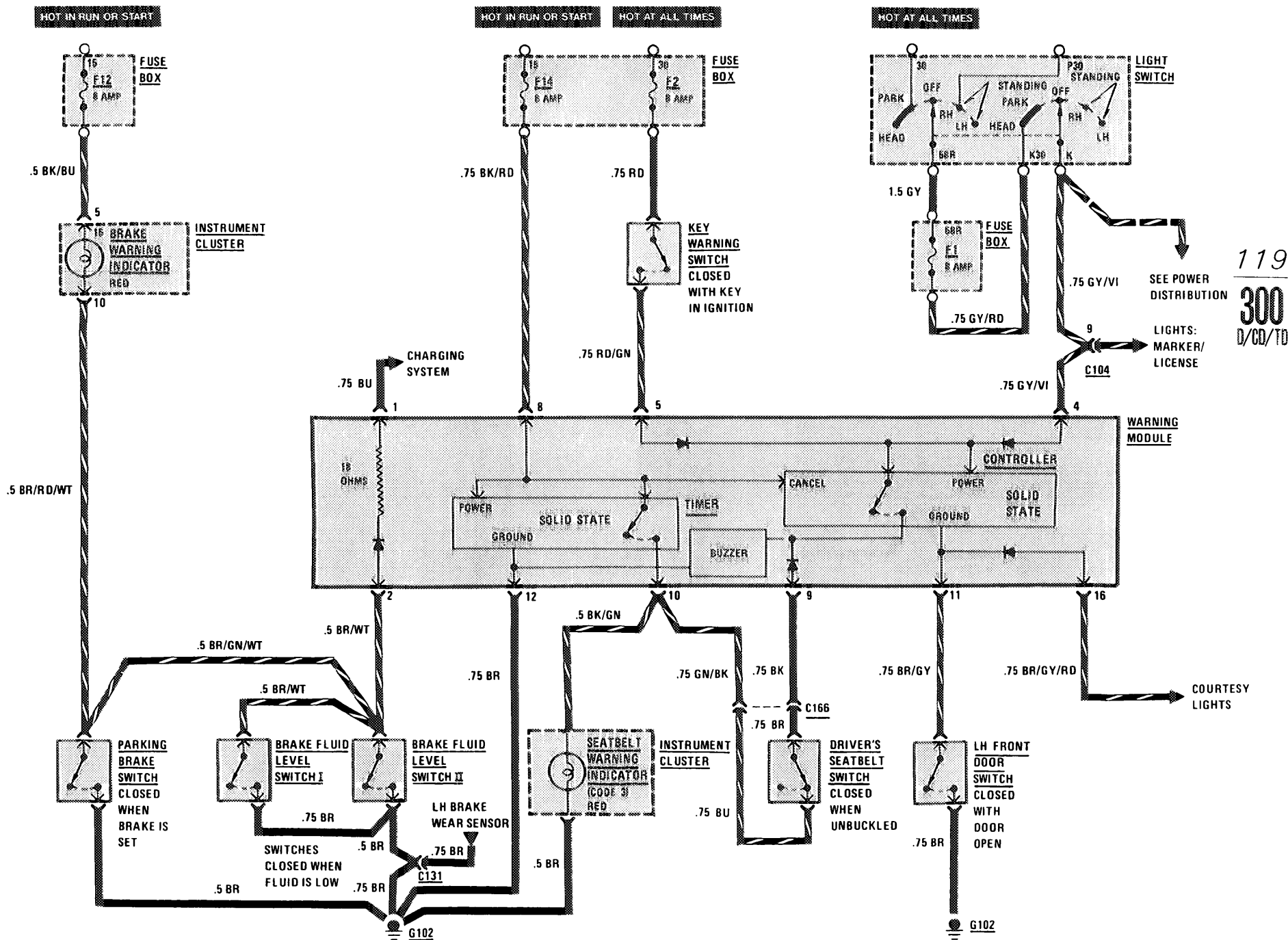
HOT IN RUN OR START

118
300
D/CD/TD



WARNING SYSTEM

(For Component Locations See Page 208)



119
300
D/CD/TD