

## INDEX

MODEL	SALES DESIGNATION
123.123 .....	240 D

CIRCUIT	PAGE	CIRCUIT	PAGE
Air Conditioning .....	124	Lights (continued)	
Automatic Antenna .....	130	—Headlights .....	110
Auxiliary Fan .....	125	—Instrument Cluster .....	120
Charging System .....	108	—License .....	113
Cigar Lighter .....	130	—Marker .....	113
Clock .....	121	—Park .....	112
Cruise Control .....	114	—Stop .....	114
Exhaust Gas Recirculation .....	109	—Tail .....	112
Fuse Information .....	102	—Turn Signal .....	118
Gauges .....	120	—Trunk .....	113
Ground Distribution .....	132	Power Distribution .....	104
Heated Seats .....	131	Power Windows .....	128
Heater .....	124	Pre-Glow System .....	106
Horns .....	127	Radio .....	130
Lights		Rear Defogger .....	126
—Backup .....	111	RH Outside Mirror .....	135
—Center Console .....	116	Sliding Roof .....	127
—Courtesy .....	119	Start/Stop (Ignition Switch) .....	107
—Fog Lights .....	110	Transmission Kickdown .....	111
—Glove Box .....	111	Warning Indicators .....	120
—Hazard .....	118	Warning System .....	122
		Wiper/Washer .....	123

# FUSE-CIRCUIT LIST

102

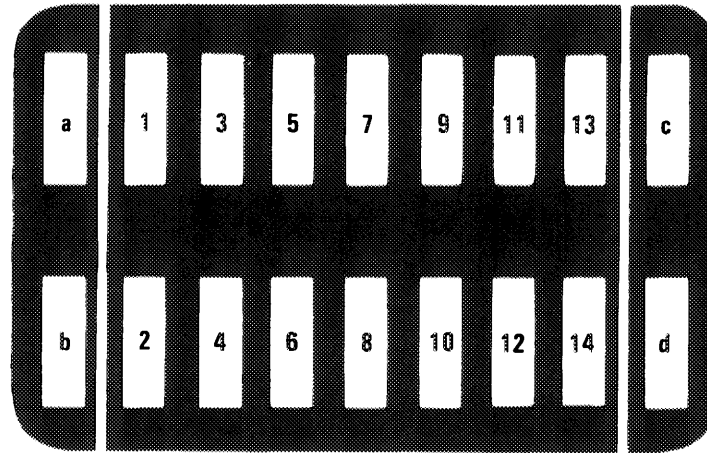
123.123

Fuse		Circuits Protected	Page
No.	Amps (Color)		
1	8(WT)	Center Console Illumination	116
		Lights: Park/Tail (RH)	112
		Lights: Marker/License	113
		Warning Indicators/ Instrument Cluster Illumination	120
		Warning System	122
2	8(WT)	Automatic Antenna	130
		Clock	120
		Courtesy Lights	119
		Hazard Lights	118
		Radio	130
		Trunk Light	113
		Warning System	122
3	8(WT)	Lights: Park/Tail (LH)	112
4	8(WT) 16(PK)*	Cigar Lighter	130
		Glove Box Light	113
		Radio	130
		RH Outside Mirror	135
		*With Heated Seats (Front)	
5		Not Used	
6	16(PK)	Headlights (Flash)	110
		Wiper/Washer	123
7	8(WT)	Headlights (RH High Beam)	110
8	16(PK)	Air Conditioning	124
		Heater	124
9	8(WT)	Headlights (LH High Beam/Indicator)	110
10	16(PK) 25(BU)*	Rear Defogger	126
		*With Heated Seats (Rear)	131

Fuse		Circuits Protected	Page
No.	Amps (Color)		
11	16(PK)	Fog Lights	110
		Headlights (RH Low Beam)	110
12	8(WT)	Cruise control	114
		Gauges	120
		Power Windows	128
		Stoplights	114
		Turn Signal Lights	118
		Warning Indicators	120
13	8(WT)	Headlights (LH Low Beam)	110
14	8(WT)	Backup Lights/Transmission Kickdown	111
		Exhaust Gas Recirculation	109
		Horns	127
		Warning System	122
		Auxiliary Fan	125
a	16(PK)	Power Windows (RF/LR)	128
b	16(PK)	Power Windows (LF/RR)	128
c	16(PK)	Auxiliary Fan	125
d	16(PK)	Sliding Roof	127
Radio In-Line Fuse	2(GLASS)	Radio (Part of Europa Cassette Radio)	130
	80	Power Input (Europa Cassette only)	106

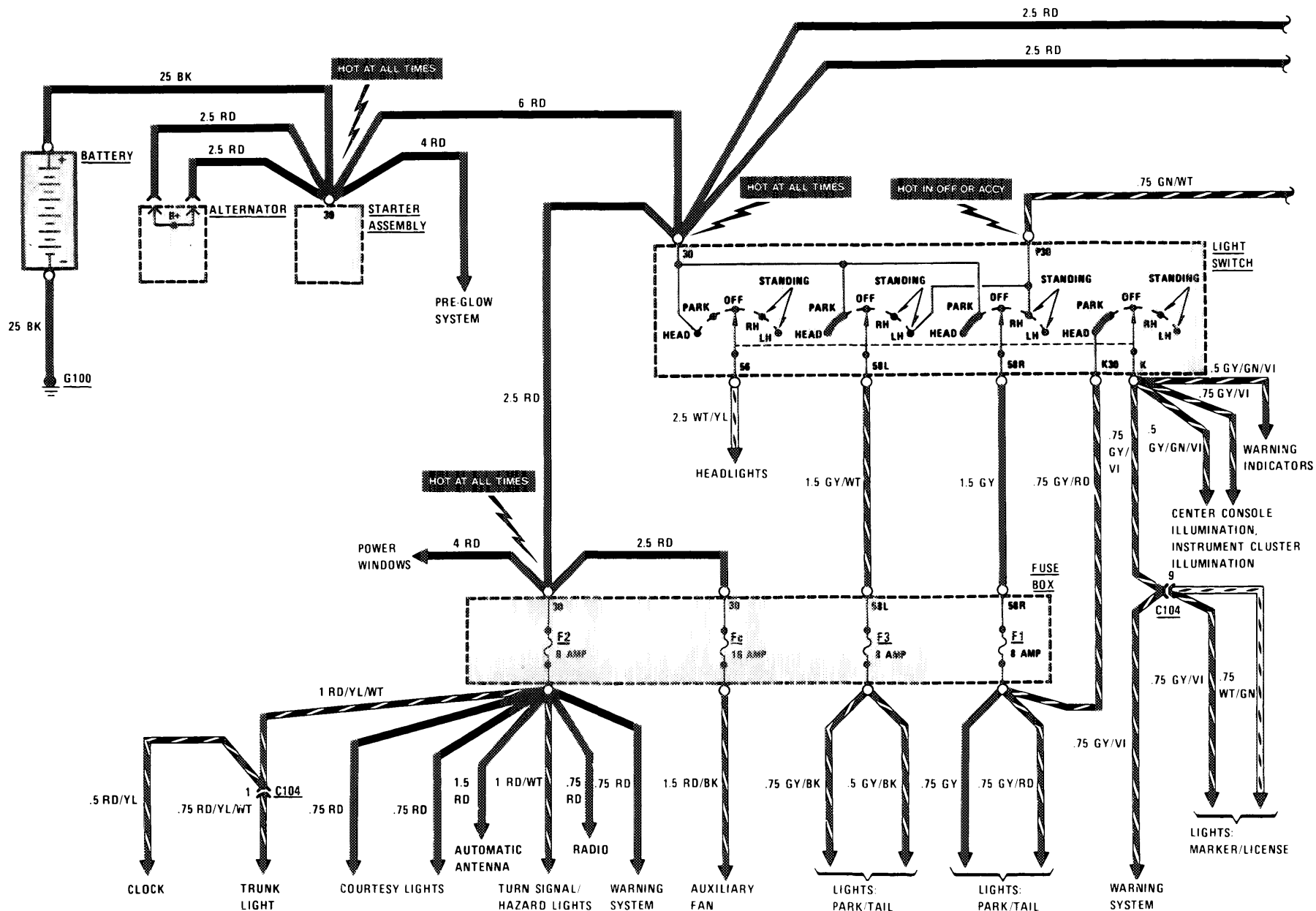
REVISIONS:

# FUSE BOX



RELAY CODE	RELAY USE
10	Window Relay
12	A/C Relay
6	Auxiliary Fan Relay

REVISIONS:



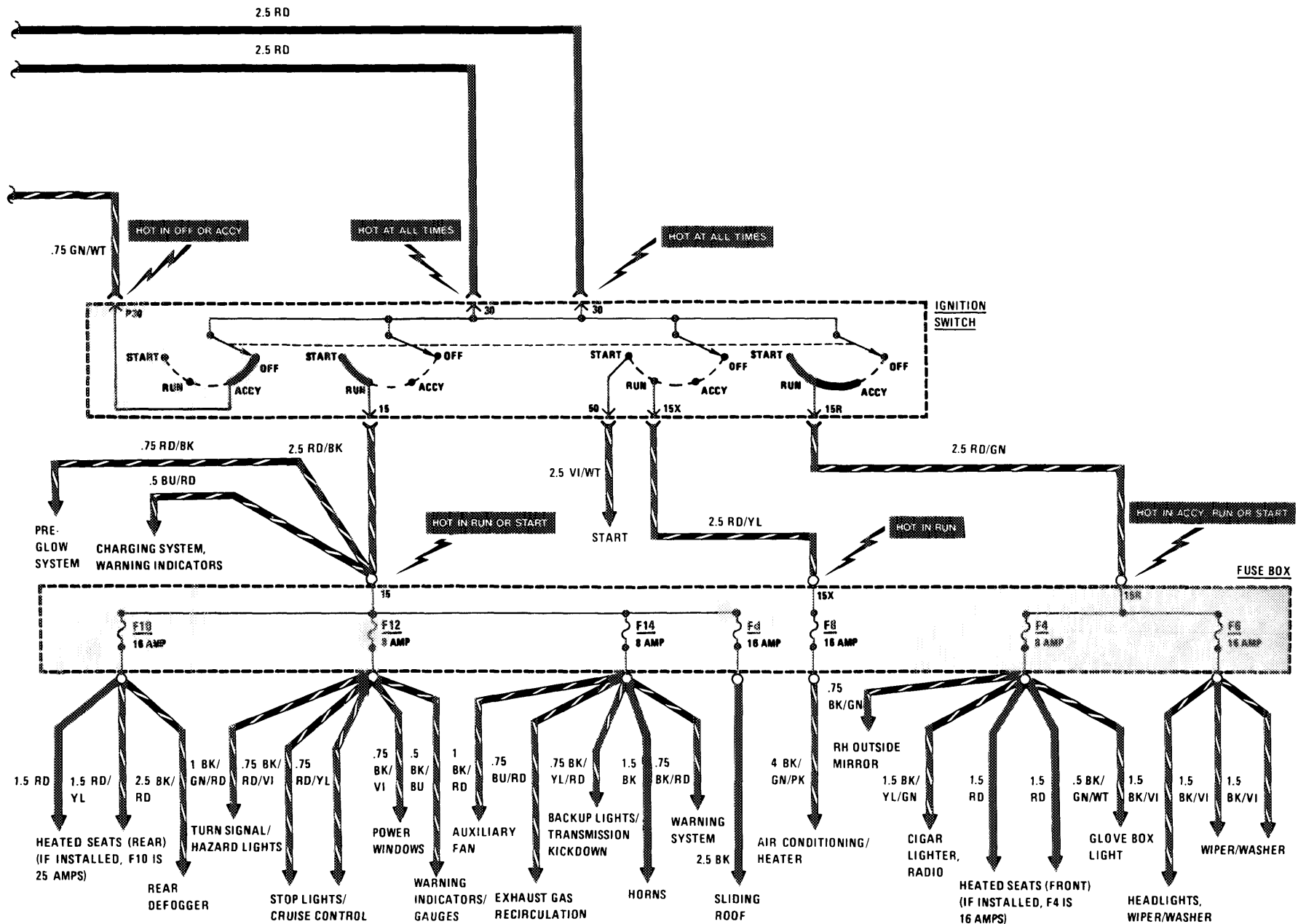
REVISIONS:

# POWER DISTRIBUTION

(For Component Locations See Page 204)

2/83

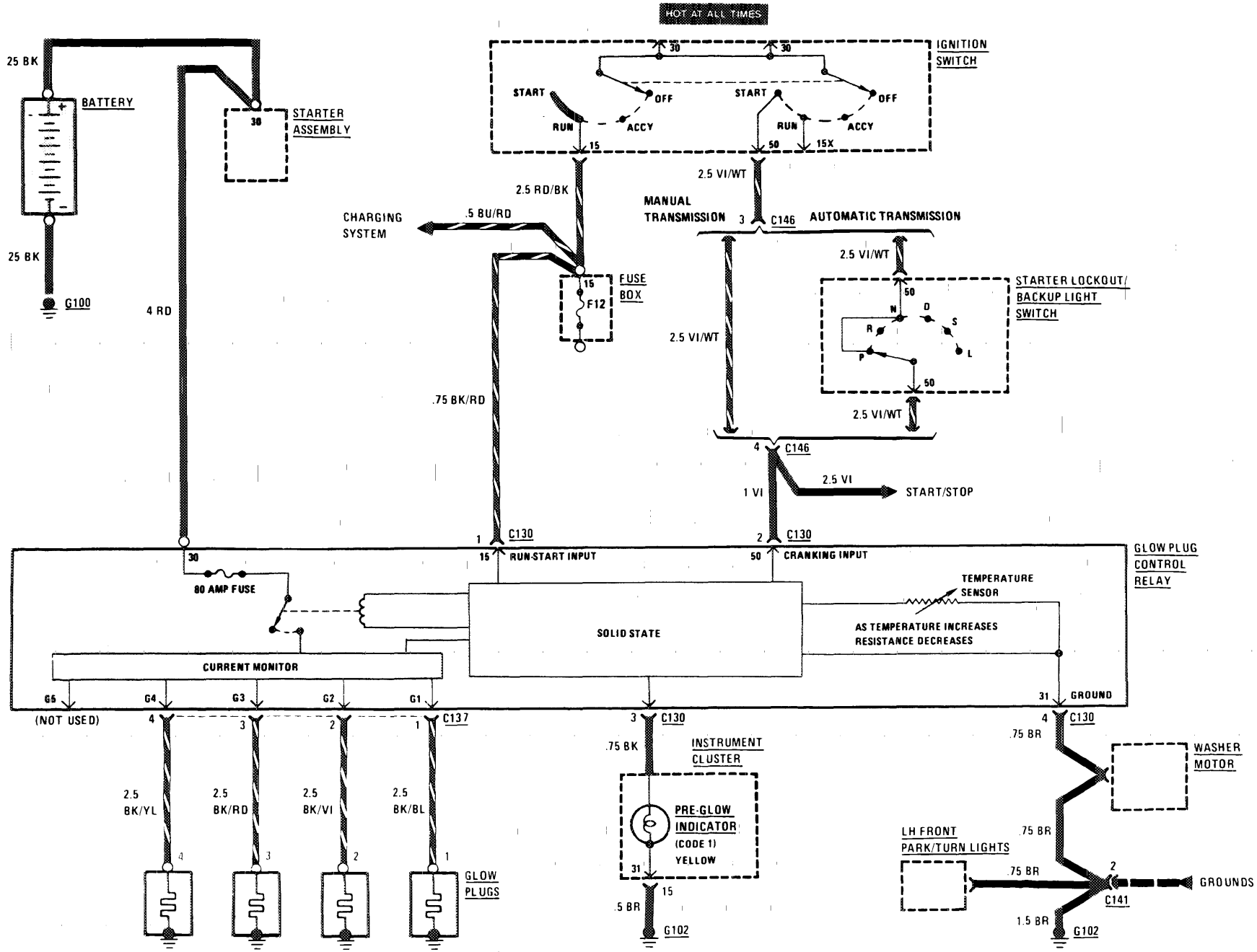
123.123



REVISIONS:

105

HOT AT ALL TIMES



REVISIONS:

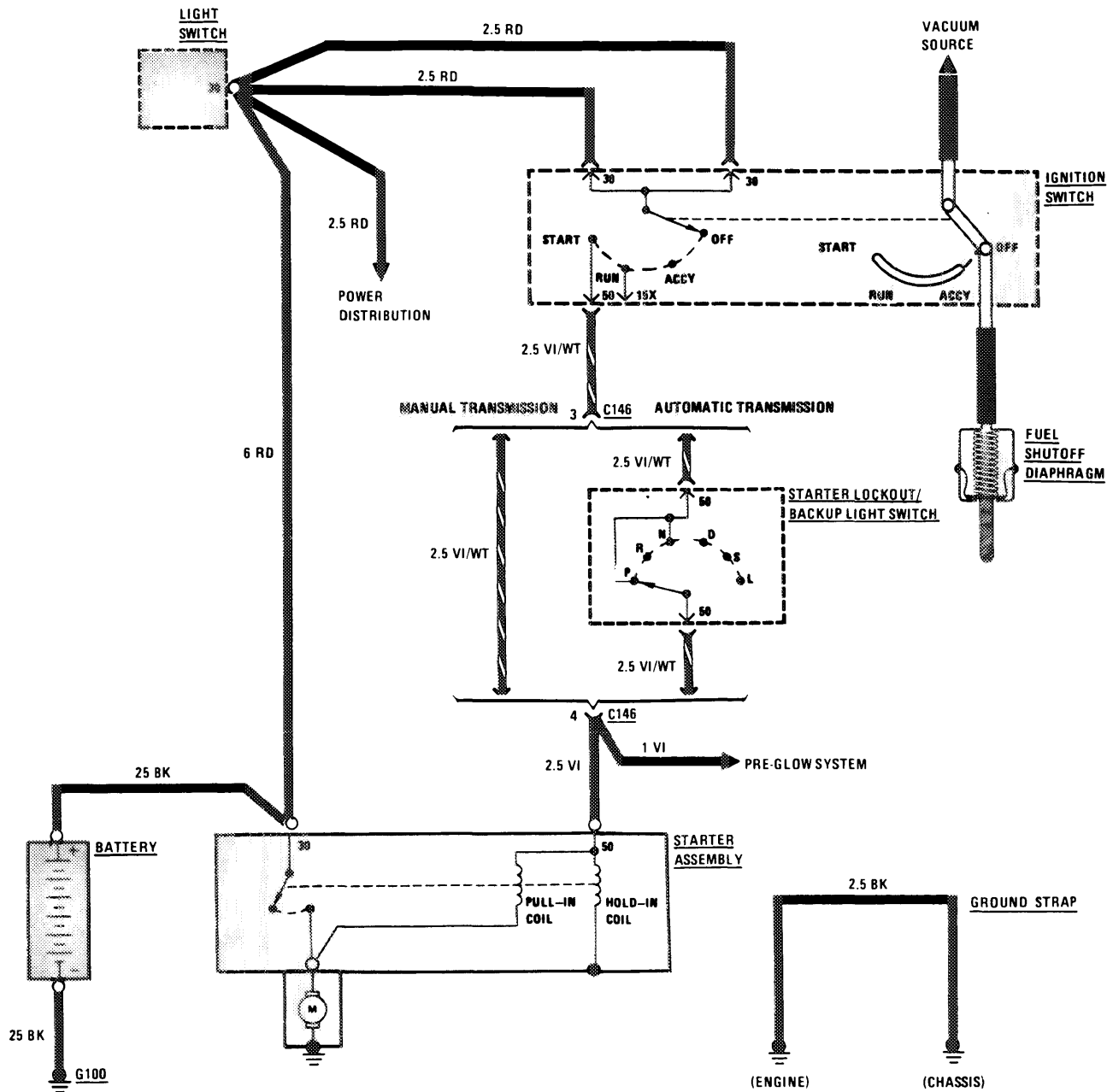
106

123.123

2.0.1

# START/STOP (IGNITION SWITCH)

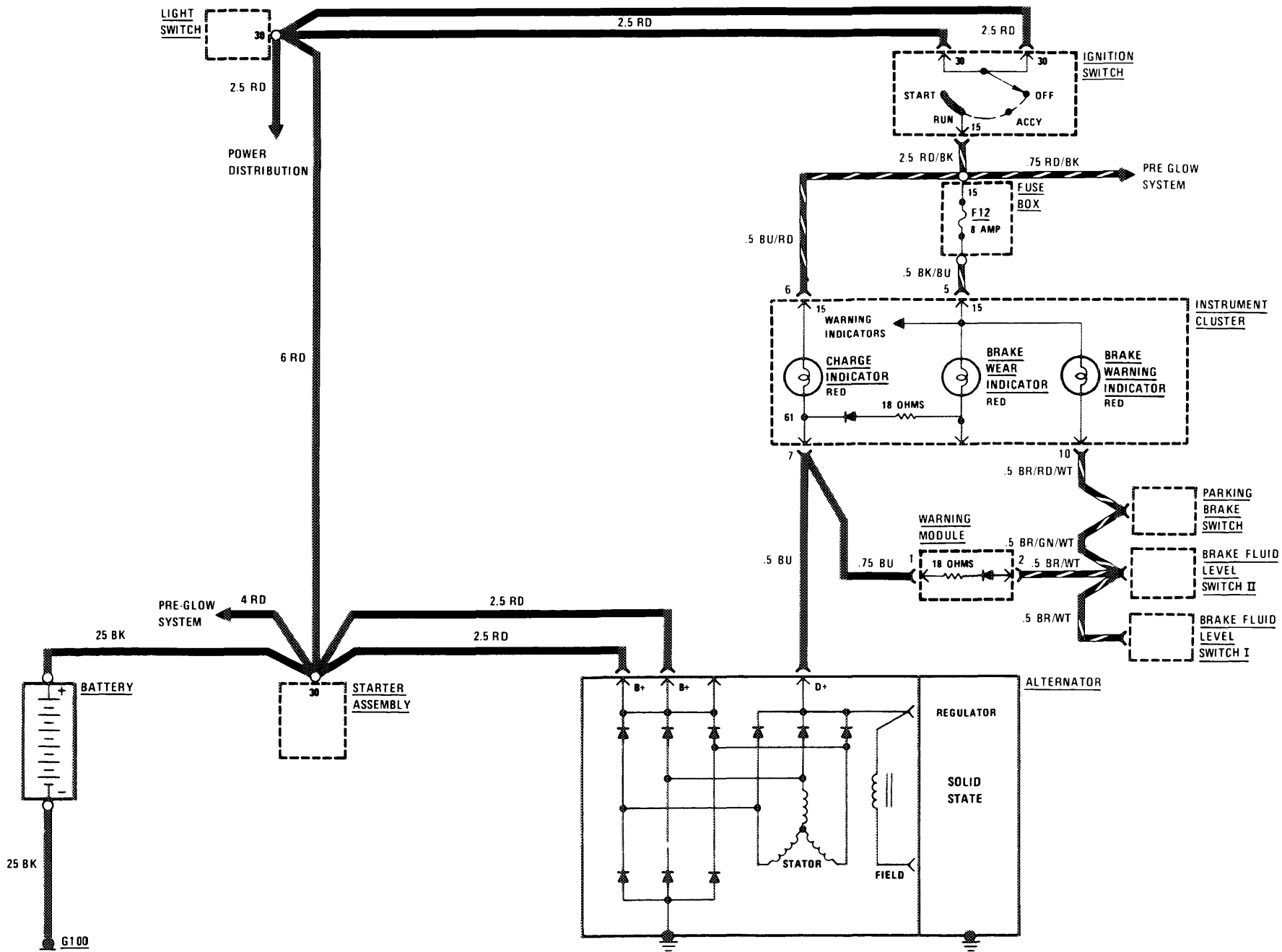
(For Component Locations See Page 205)



REVISIONS:

# CHARGING SYSTEM

(For Component Locations See Page 202)

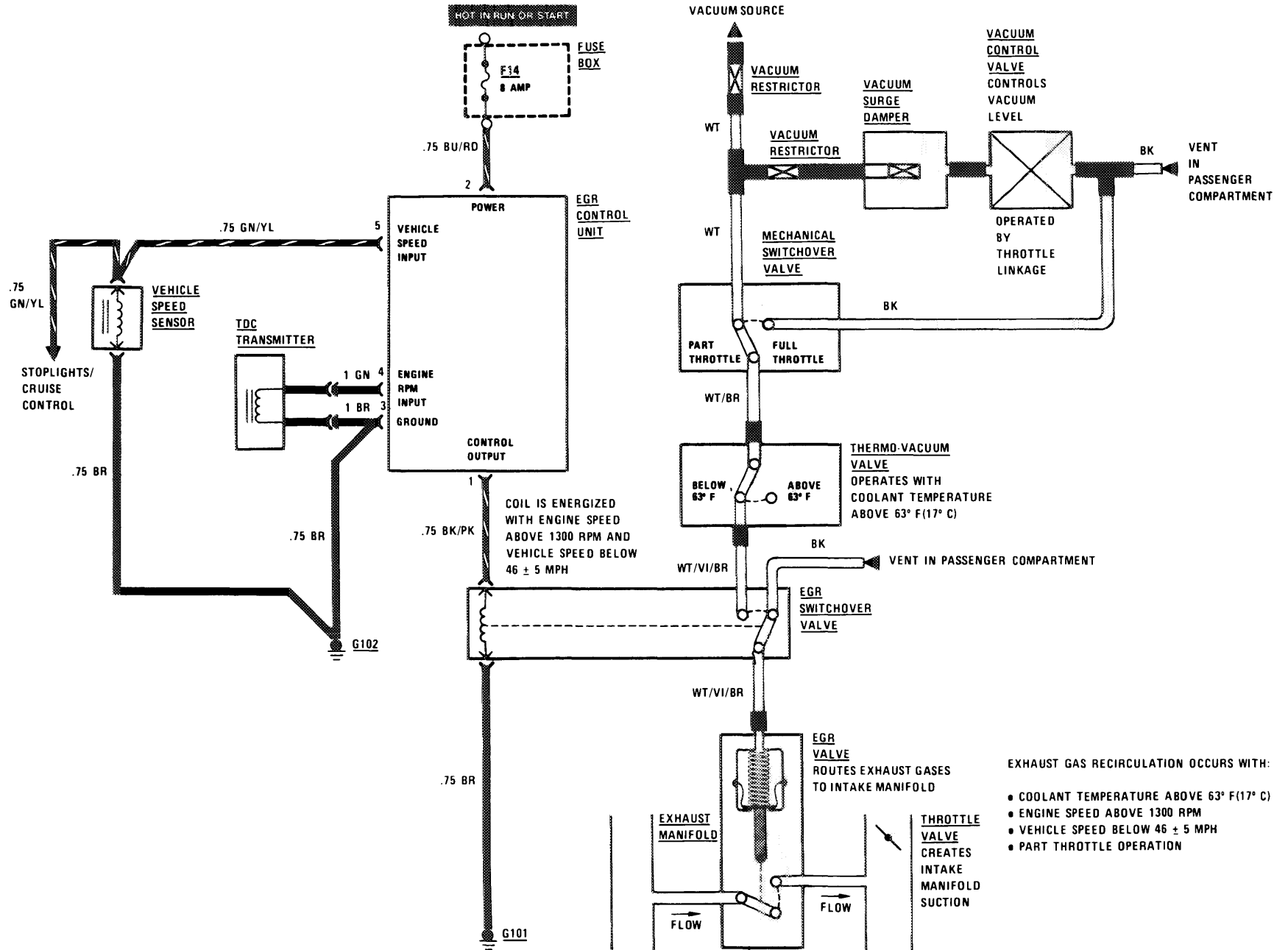


REVISIONS:



# EXHAUST GAS RECIRCULATION

(For Component Locations See Page 202)



123.123

109

REVISIONS:

EXHAUST GAS RECIRCULATION OCCURS WITH:

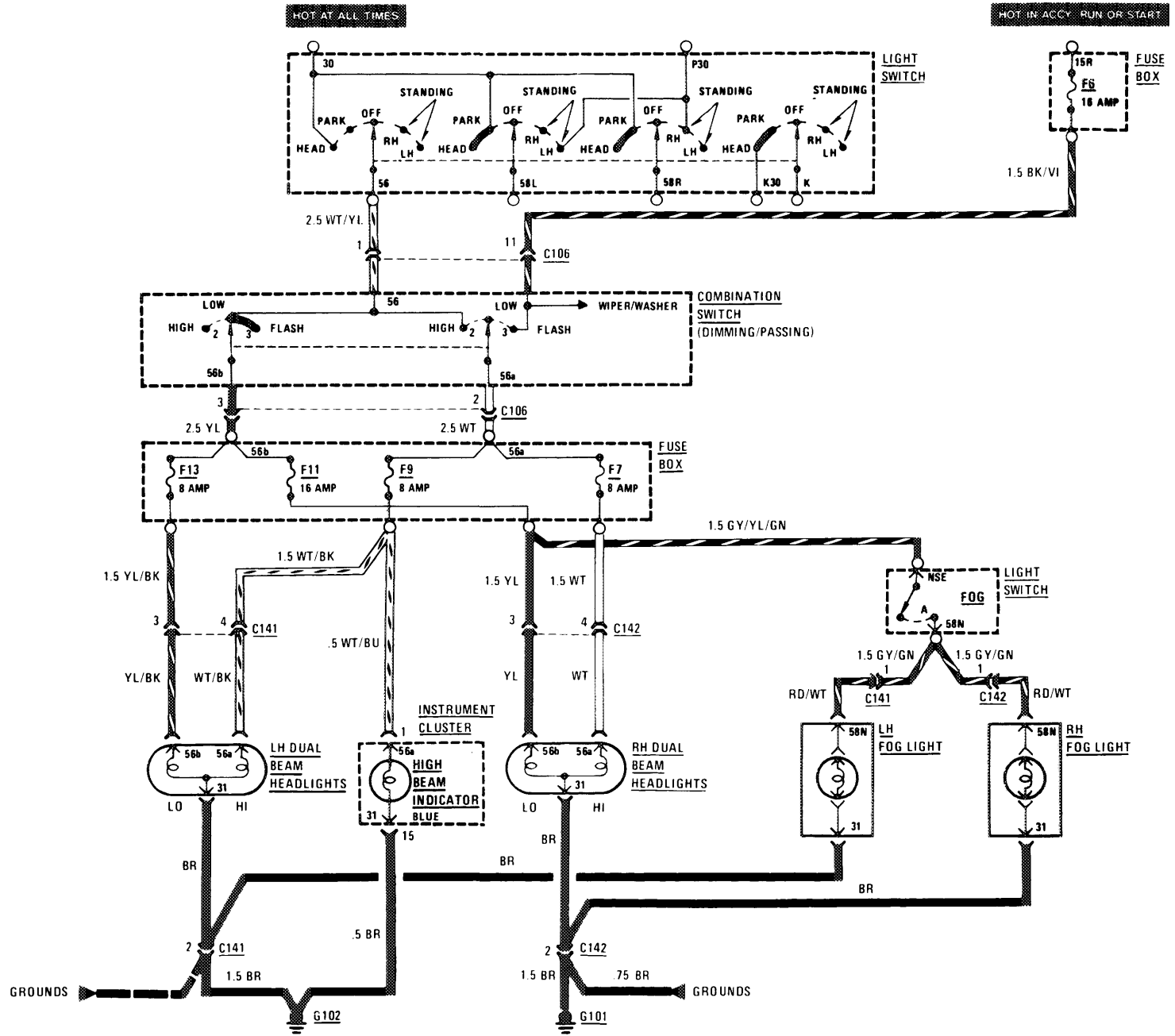
- COOLANT TEMPERATURE ABOVE 63° F (17° C)
- ENGINE SPEED ABOVE 1300 RPM
- VEHICLE SPEED BELOW 46 ± 5 MPH
- PART THROTTLE OPERATION

# HEADLIGHTS / FOG LIGHTS

(For Component Locations See Page 203)

110

123.123

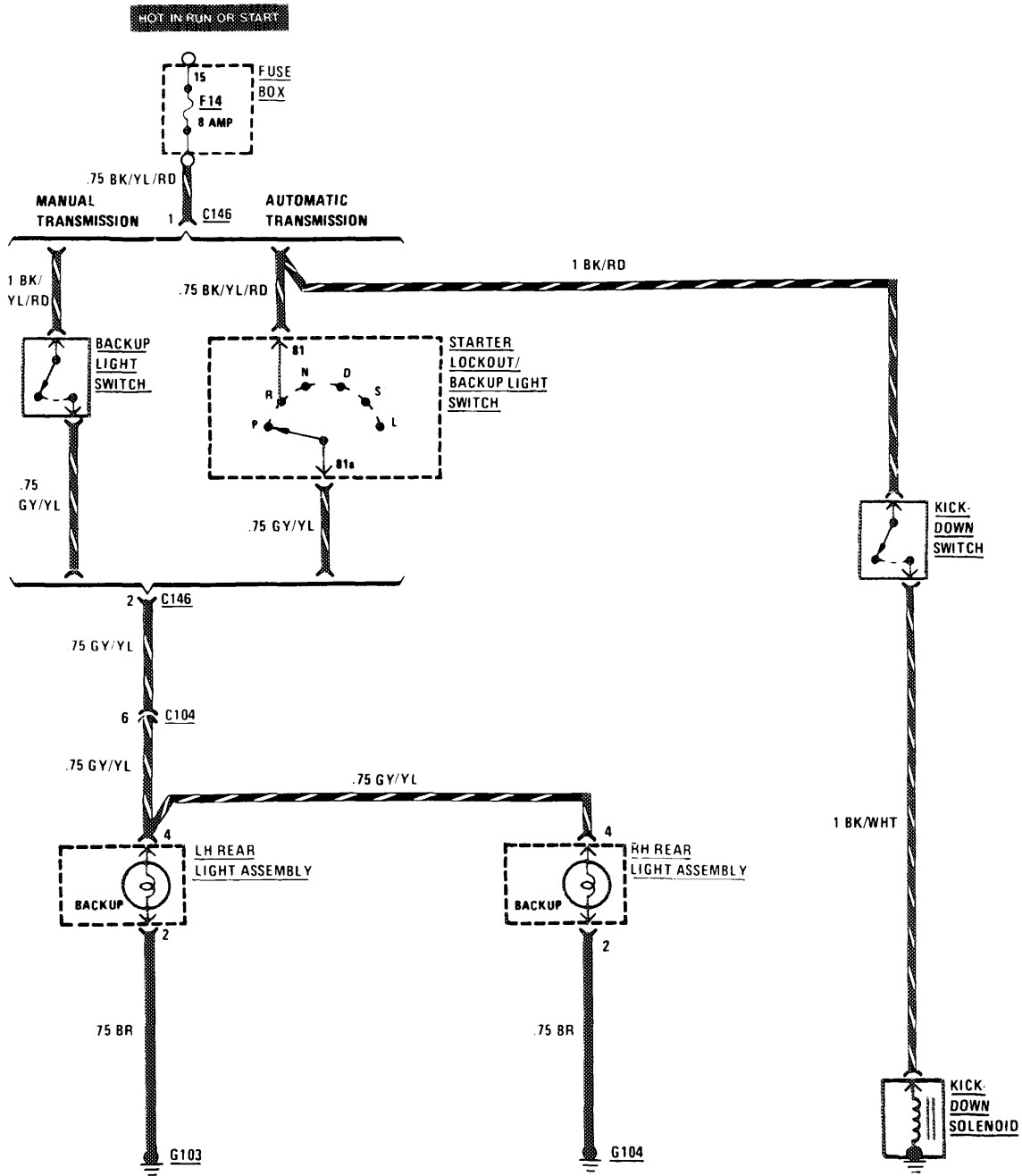


REVISIONS:

5/84

# BACKUP LIGHTS / TRANSMISSION KICKDOWN

(For Component Locations See Page 201)



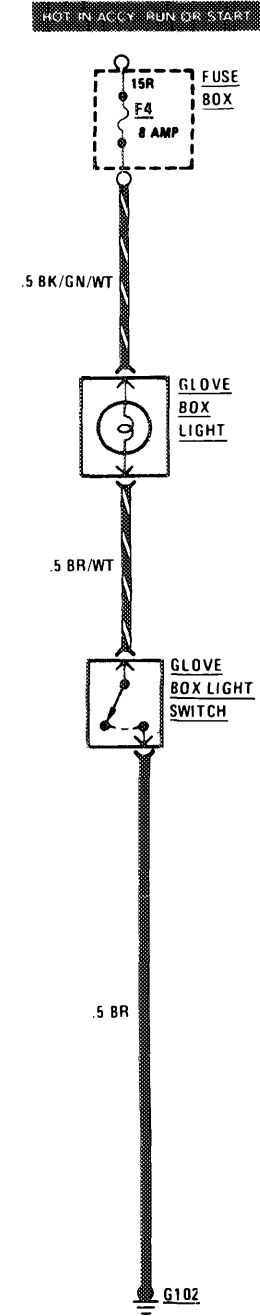
123.123

111

REVISIONS:

# GLOVE BOX LIGHT

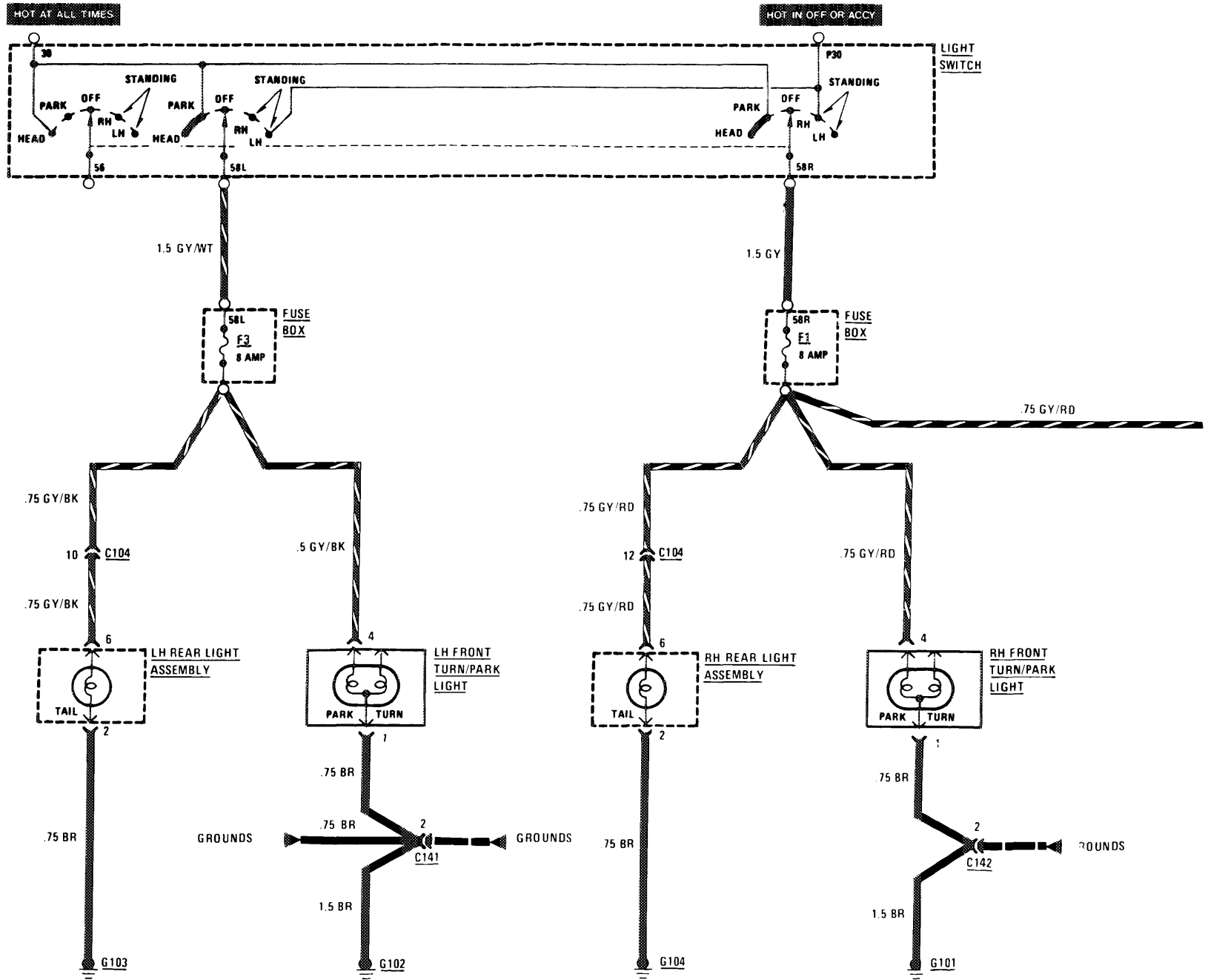
(For Component Locations See Page 201)



# LIGHTS: PARK/TAIL

(For Component Locations See Page 203)

112

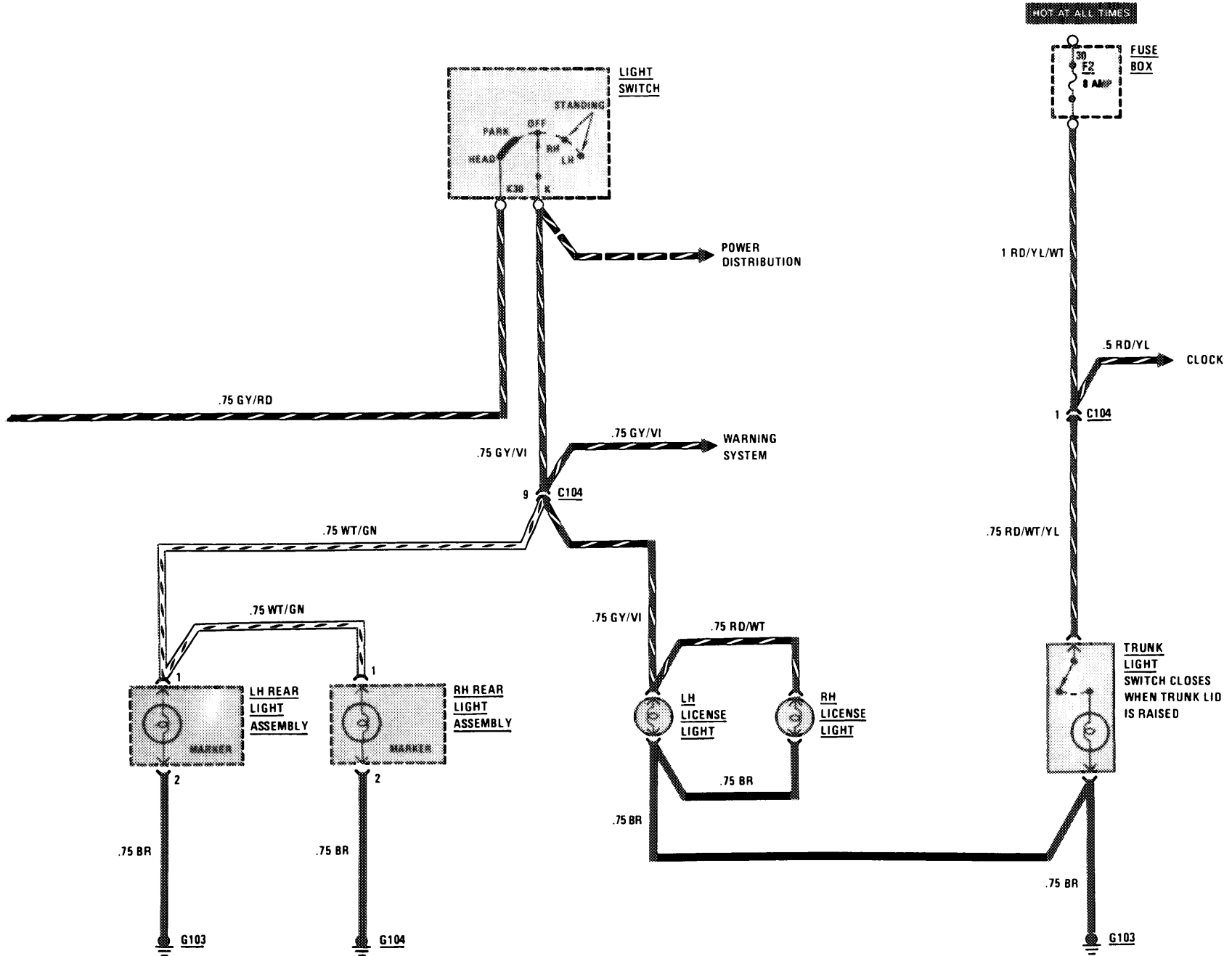


123.123

REVISIONS:

# LIGHTS: MARKER/LICENSE/TRUNK

(For Component Locations See Page 203)

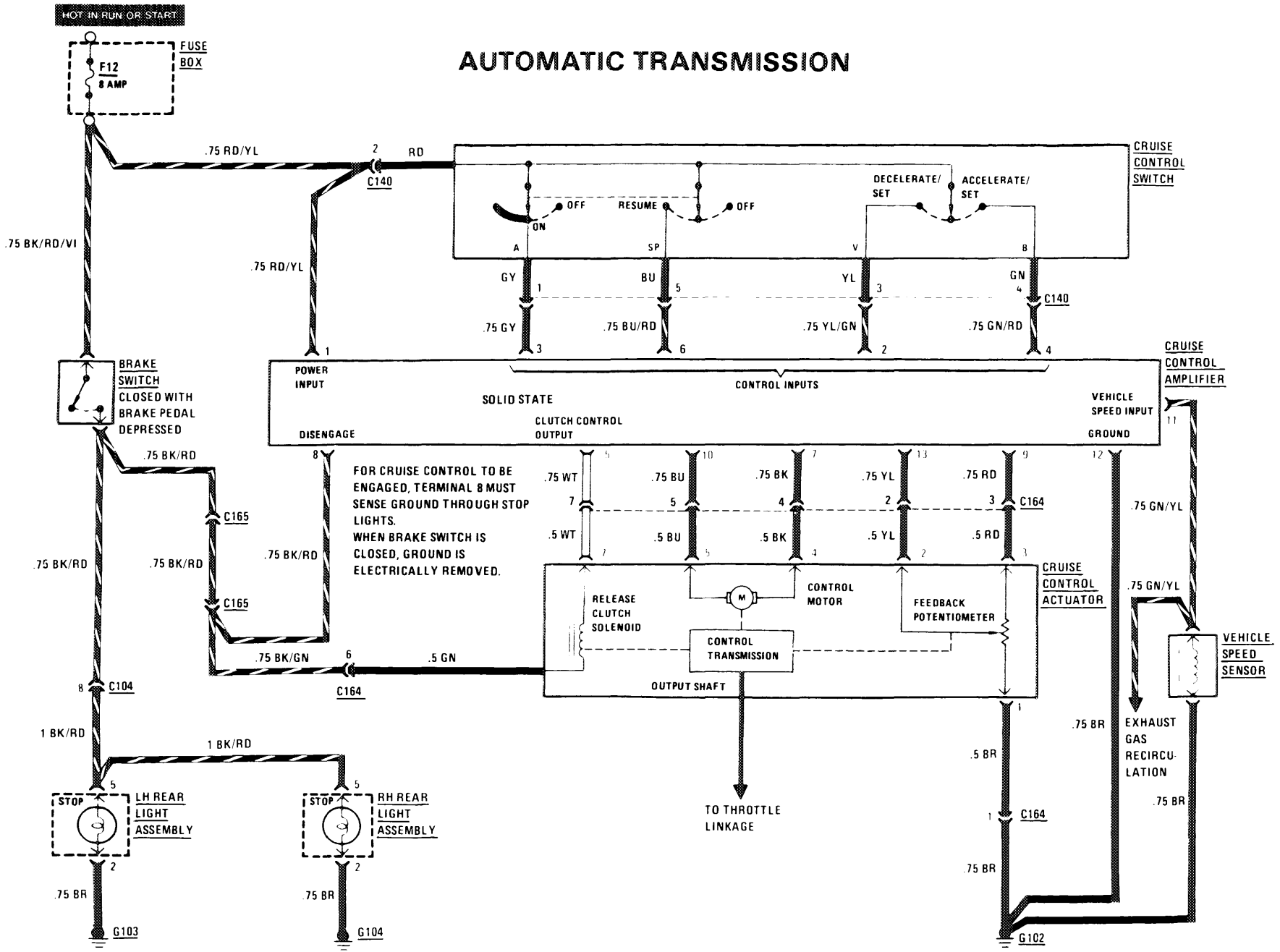


123.123

113

REVISIONS:

# AUTOMATIC TRANSMISSION



REVISIONS:


114

123.123

2/85





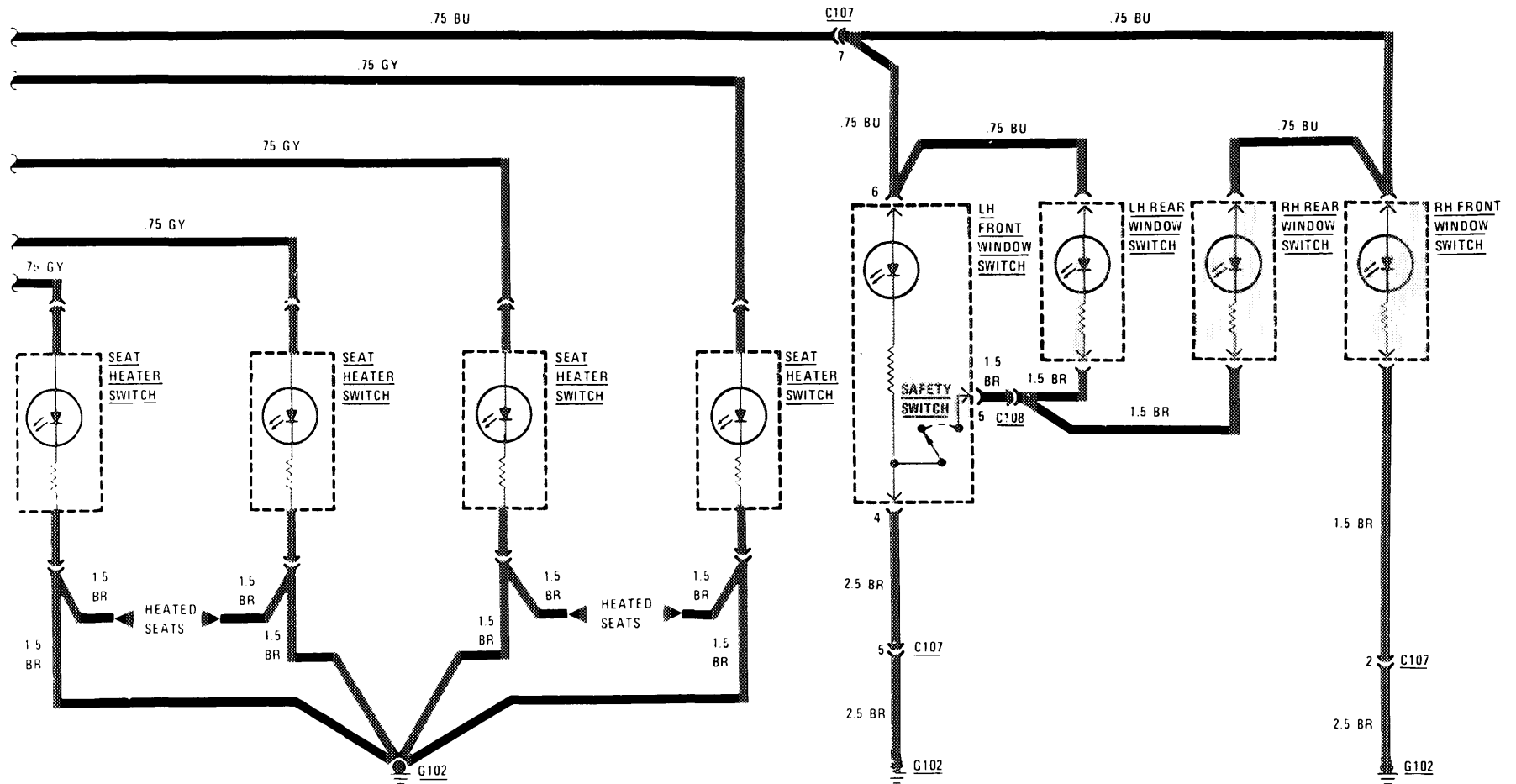


# CENTER CONSOLE ILLUMINATION

(For Component Locations See Page 201)

2/83

123.123



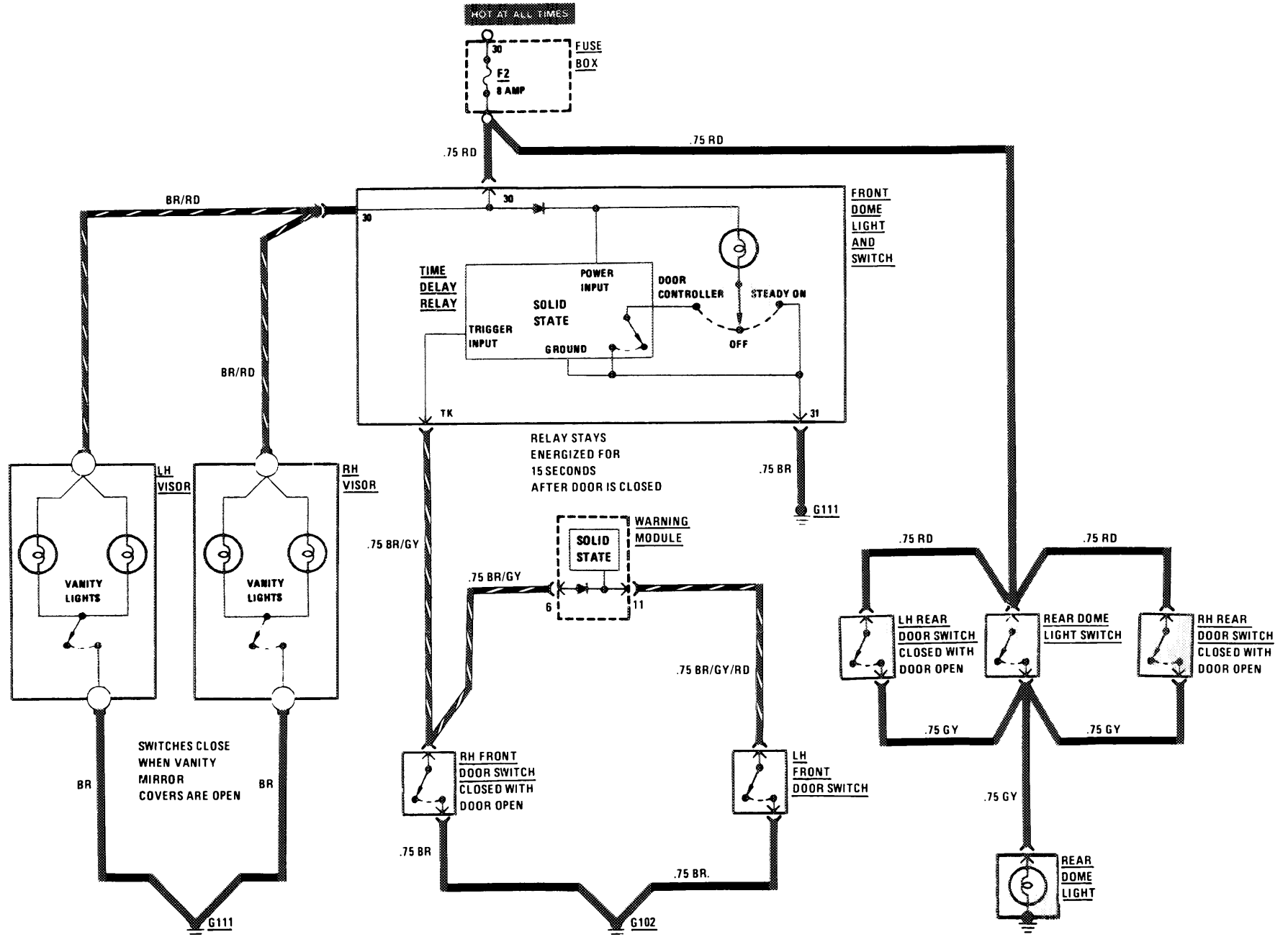
117

REVISIONS



# COURTESY LIGHTS

(For Component Locations See Page 202)

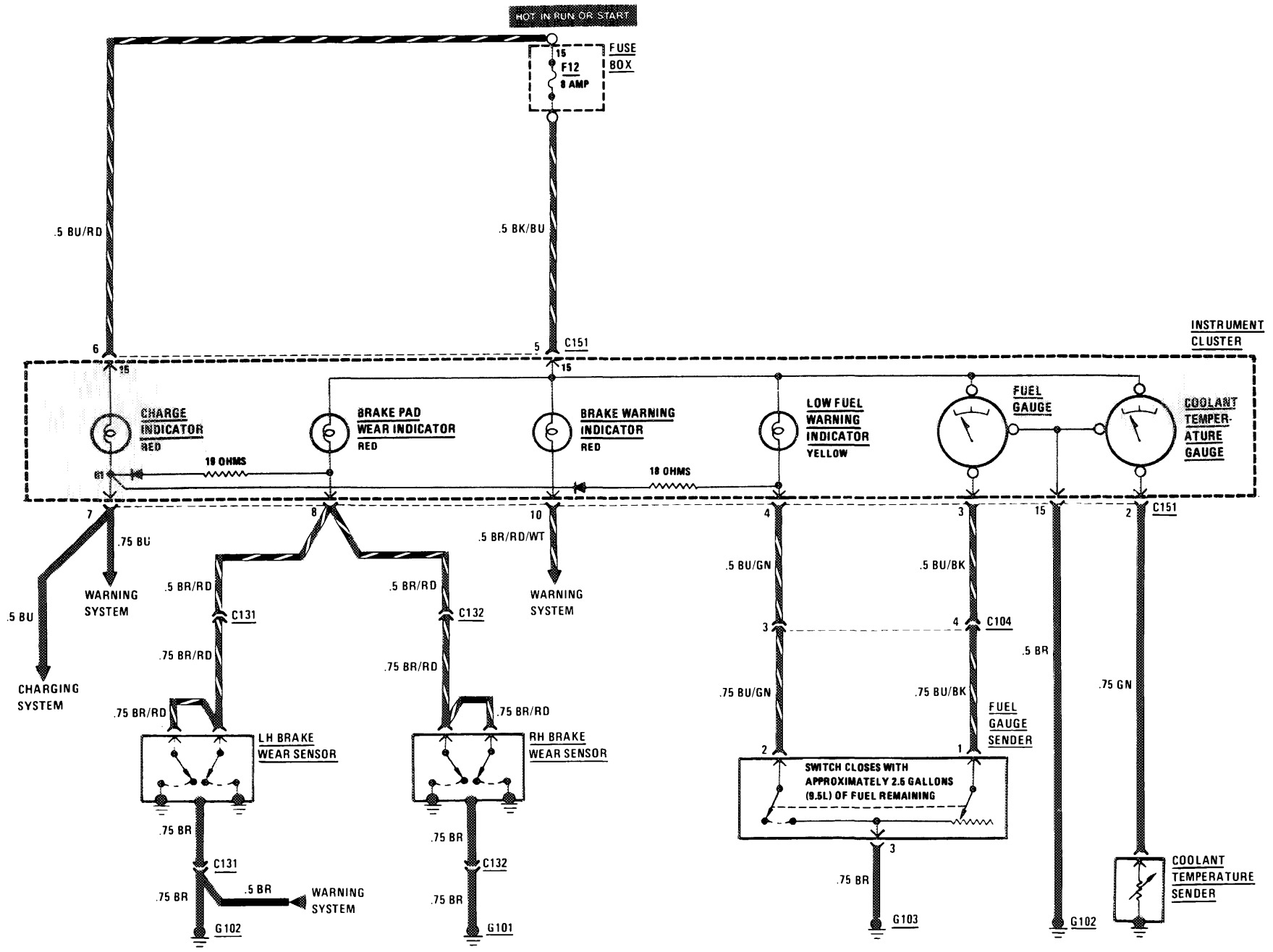


REVISIONS:

WARNING INDICATORS / GAUGES / CLOCK / INSTRUMENT CLUSTER ILLUMINATION  
 (For Component Locations See Page 206)

120

123.123



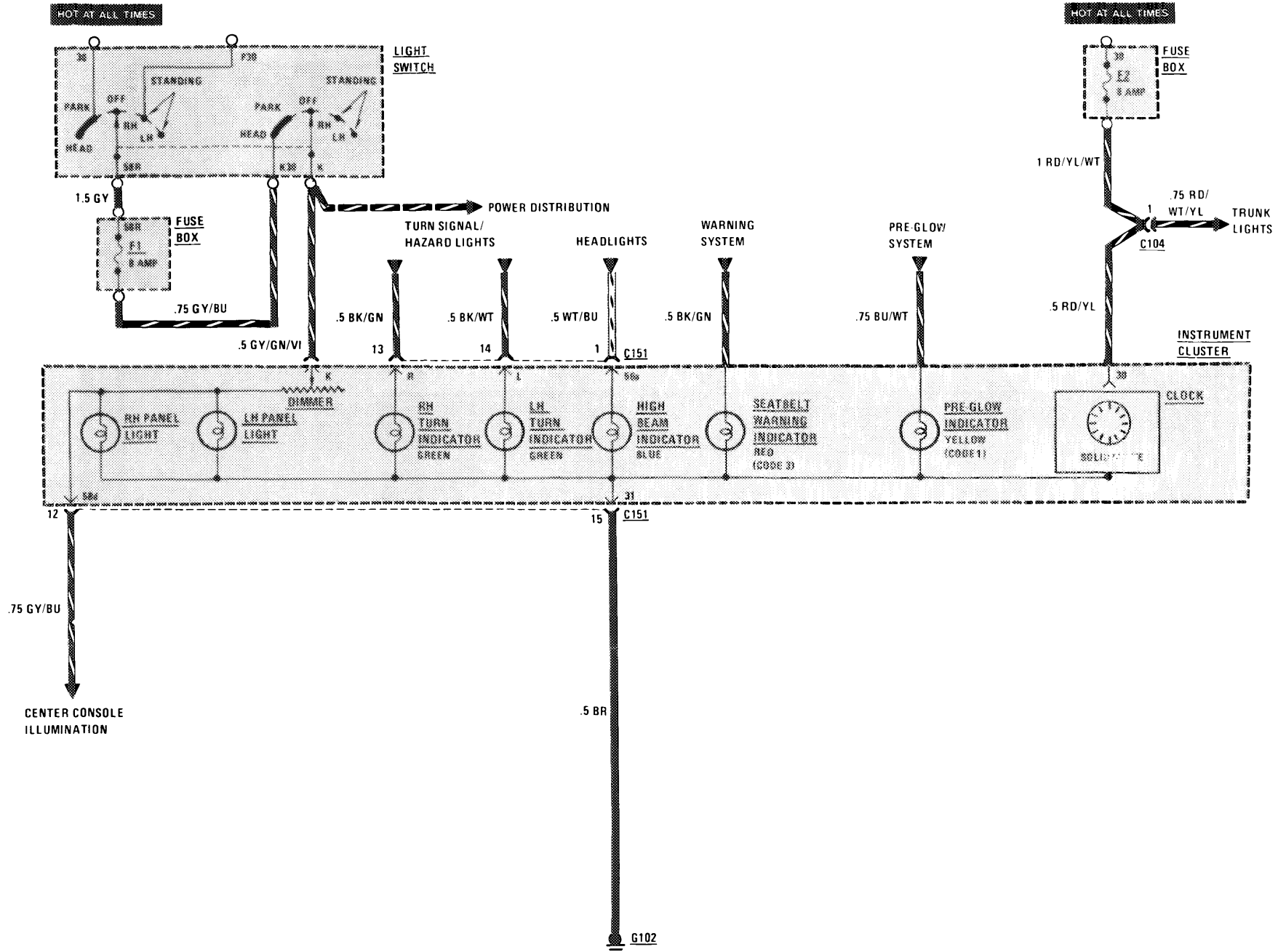
REVISIONS:

2/84

# WARNING INDICATORS/GAUGES/CLOCK/INSTRUMENT CLUSTER ILLUMINATION

(For Component Locations See Page 206)

2/83



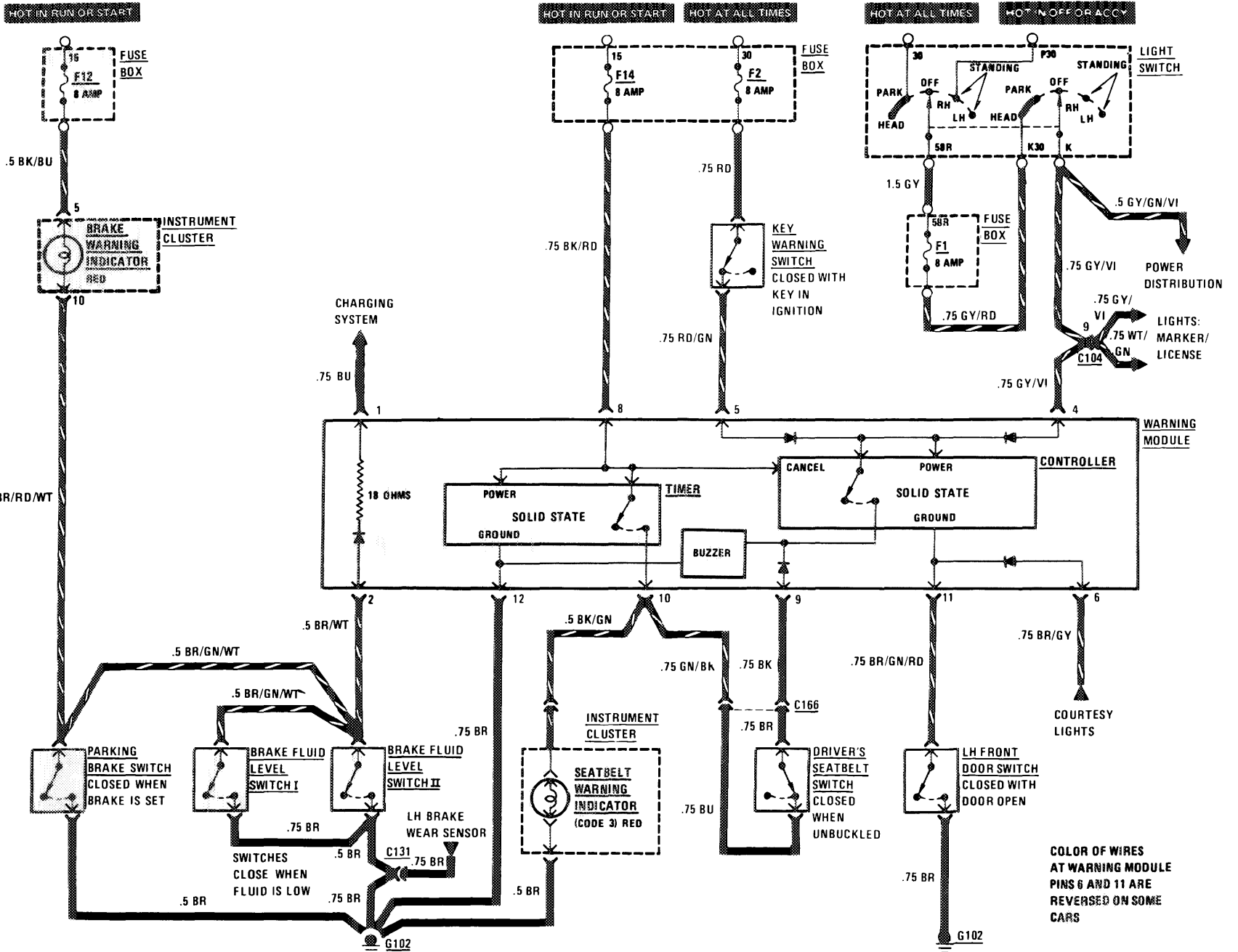
123.123

121

REVISIONS:

# WARNING SYSTEM

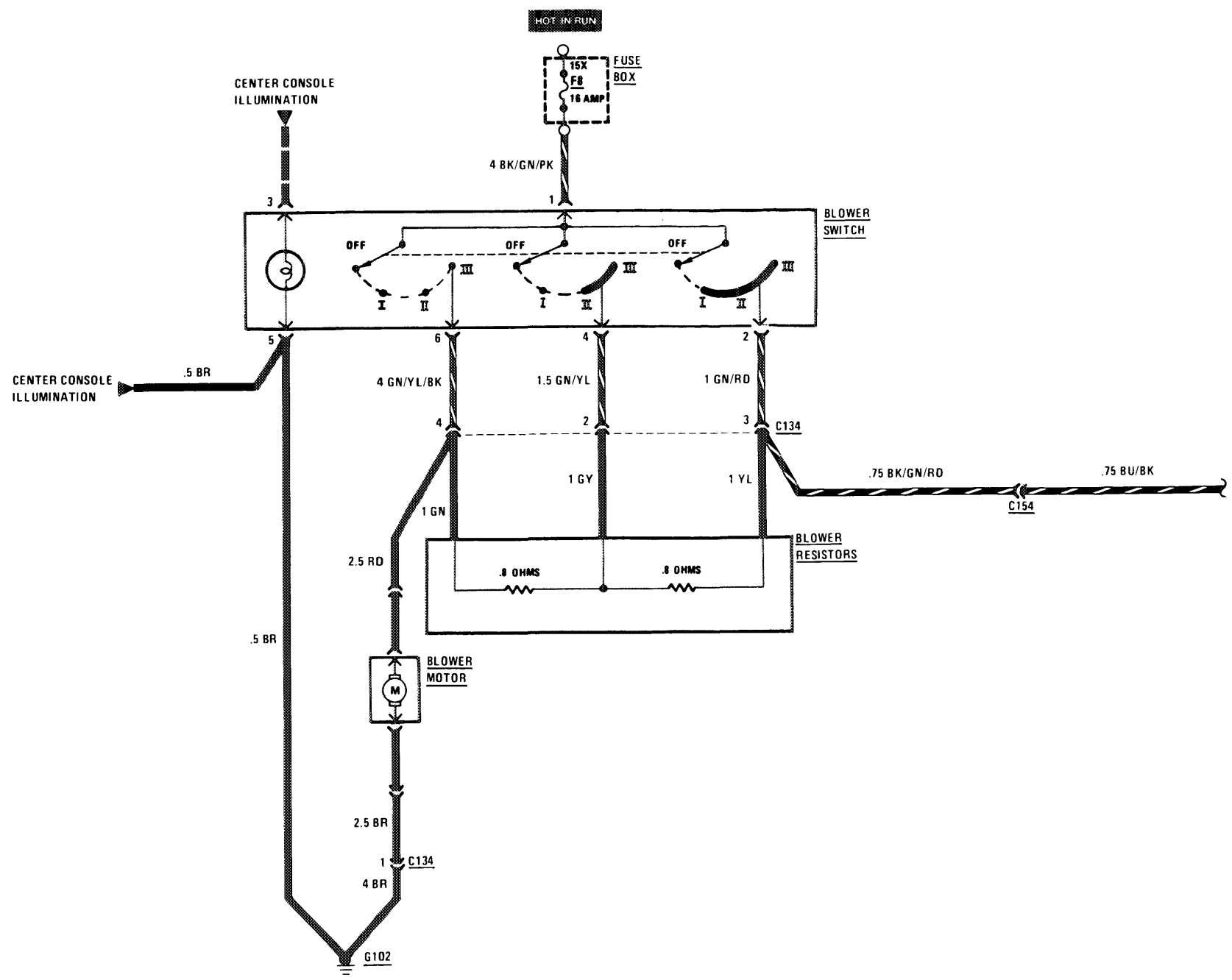
(For Component Locations See Page 206)





# AIR CONDITIONING/HEATER

(For Component Locations See Page 201)



REVISIONS:

124

123.123

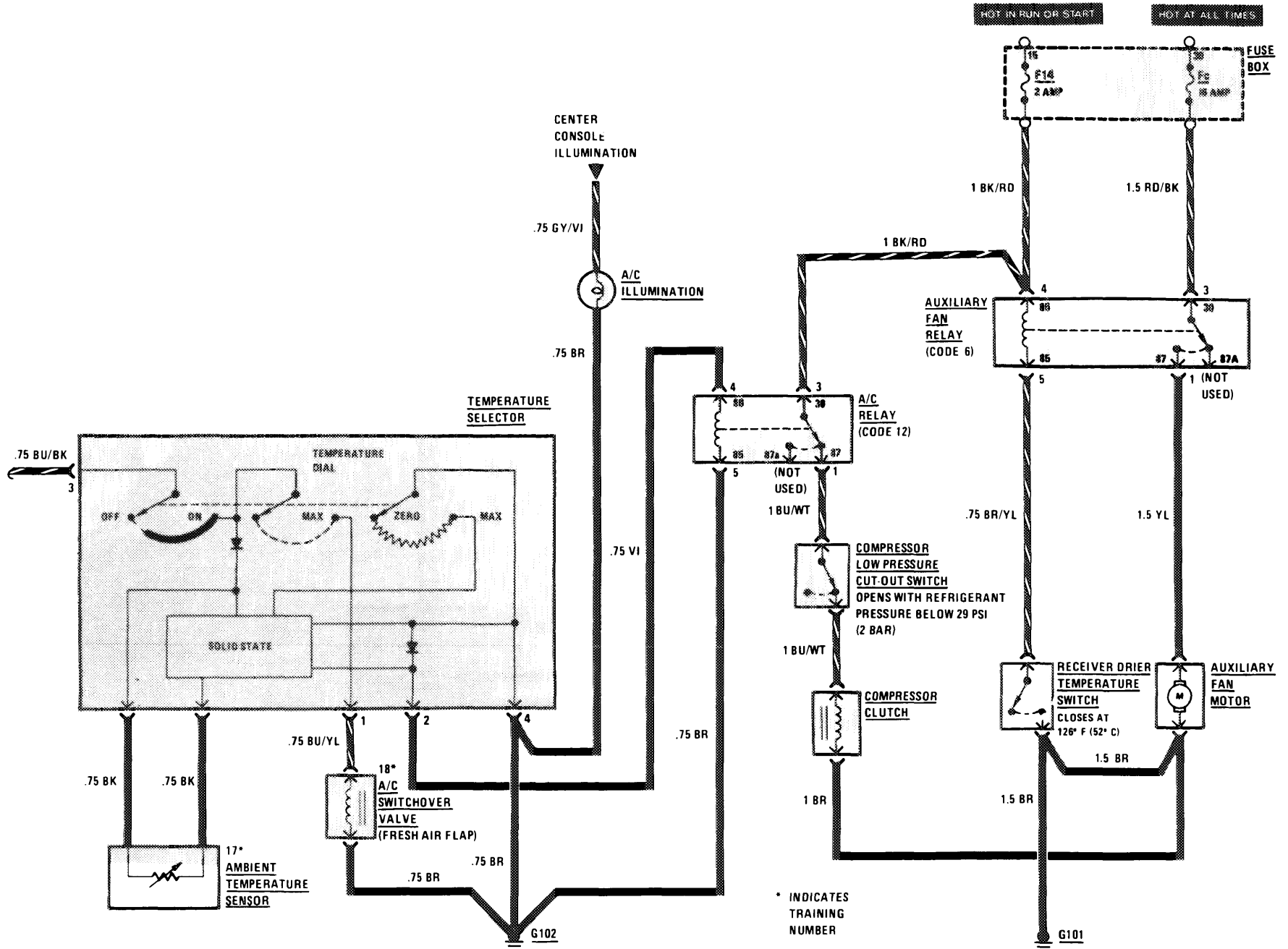
2/83



# AIR CONDITIONING/HEATER/AUXILIARY FAN

(For Component Locations See Page 201)

123.123



125

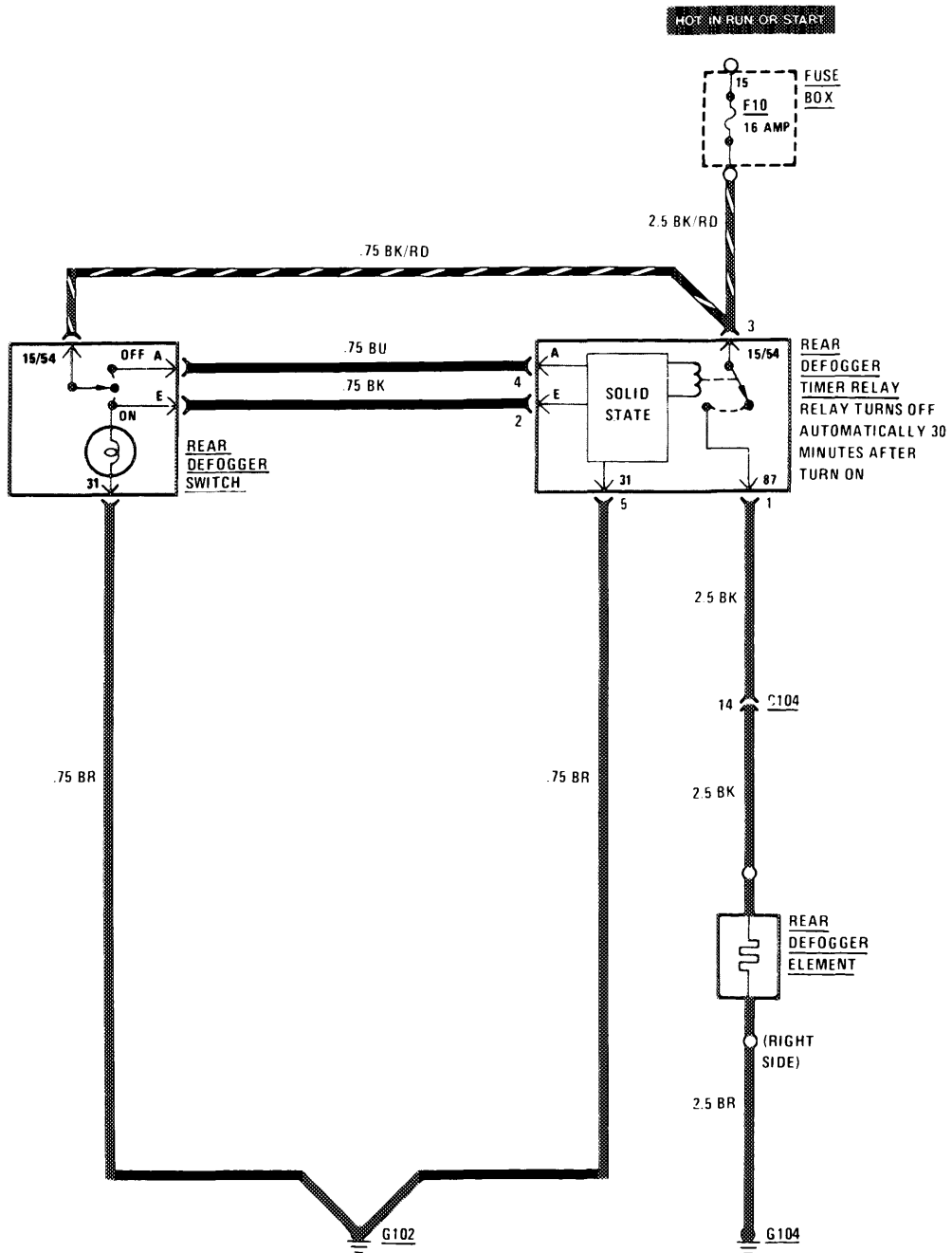
REVISIONS:

# REAR DEFOGGER

(For Component Locations See Page 204)

126

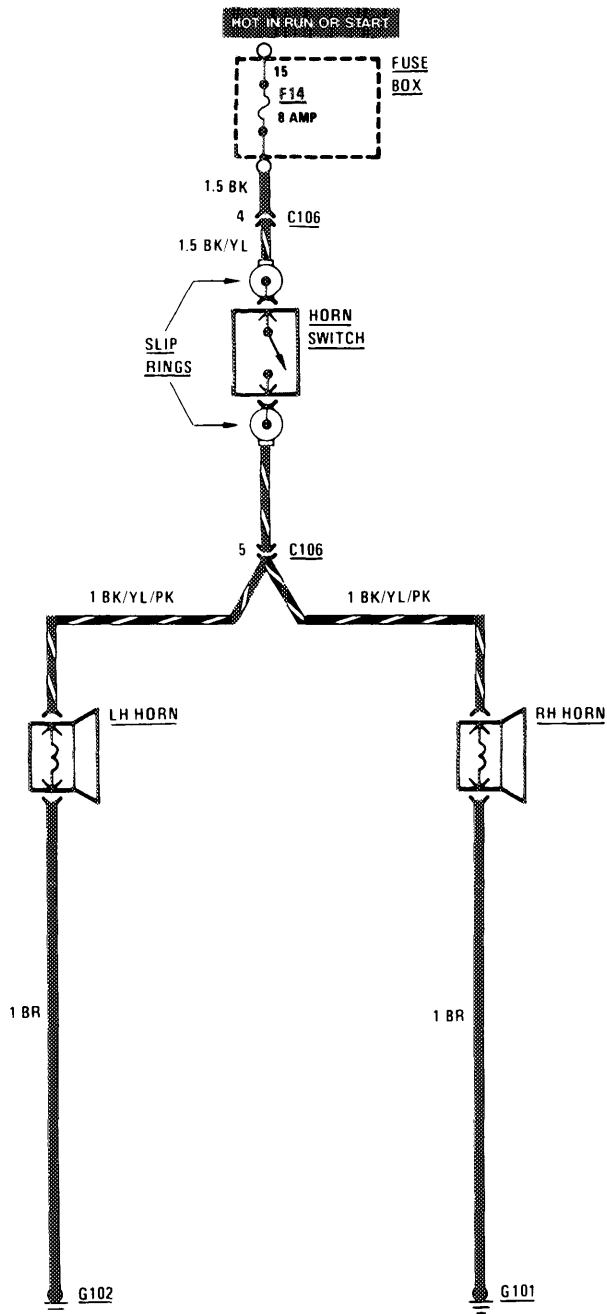
123.123



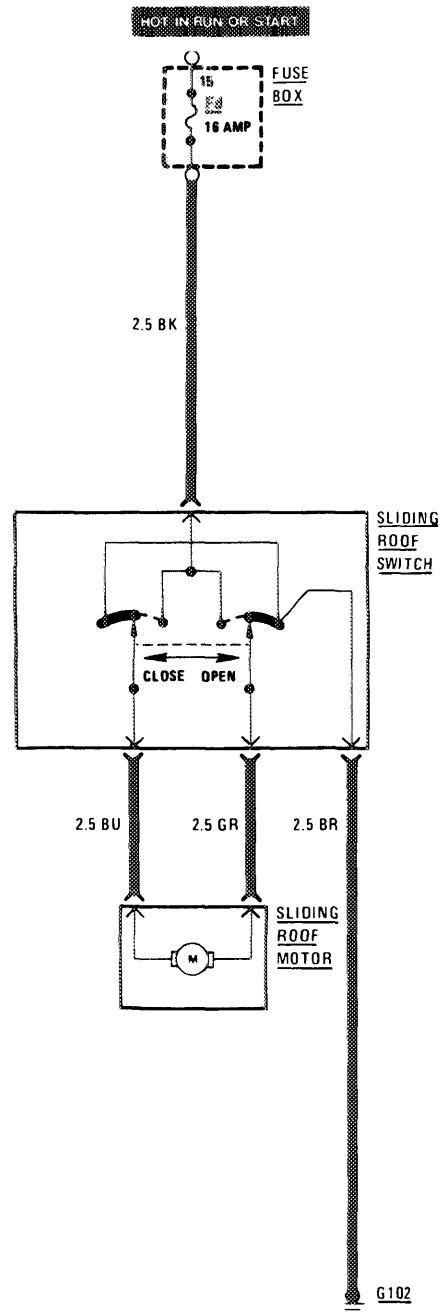
REVISIONS:

# HORNS

(For Component Locations See Page 203)



# SLIDING ROOF



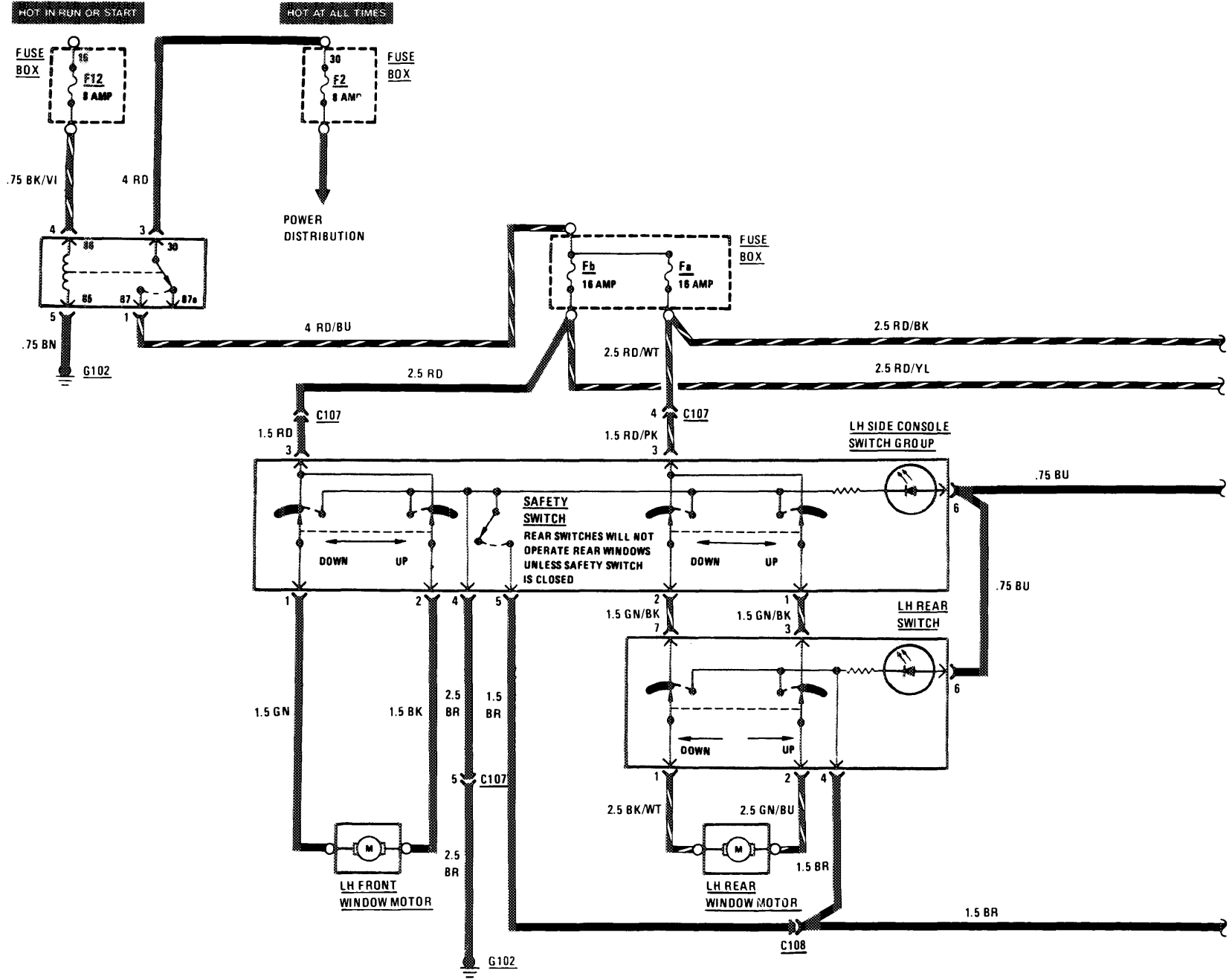
123.123

127

REVISIONS:

# POWER WINDOWS

(For Component Locations See Page 204)



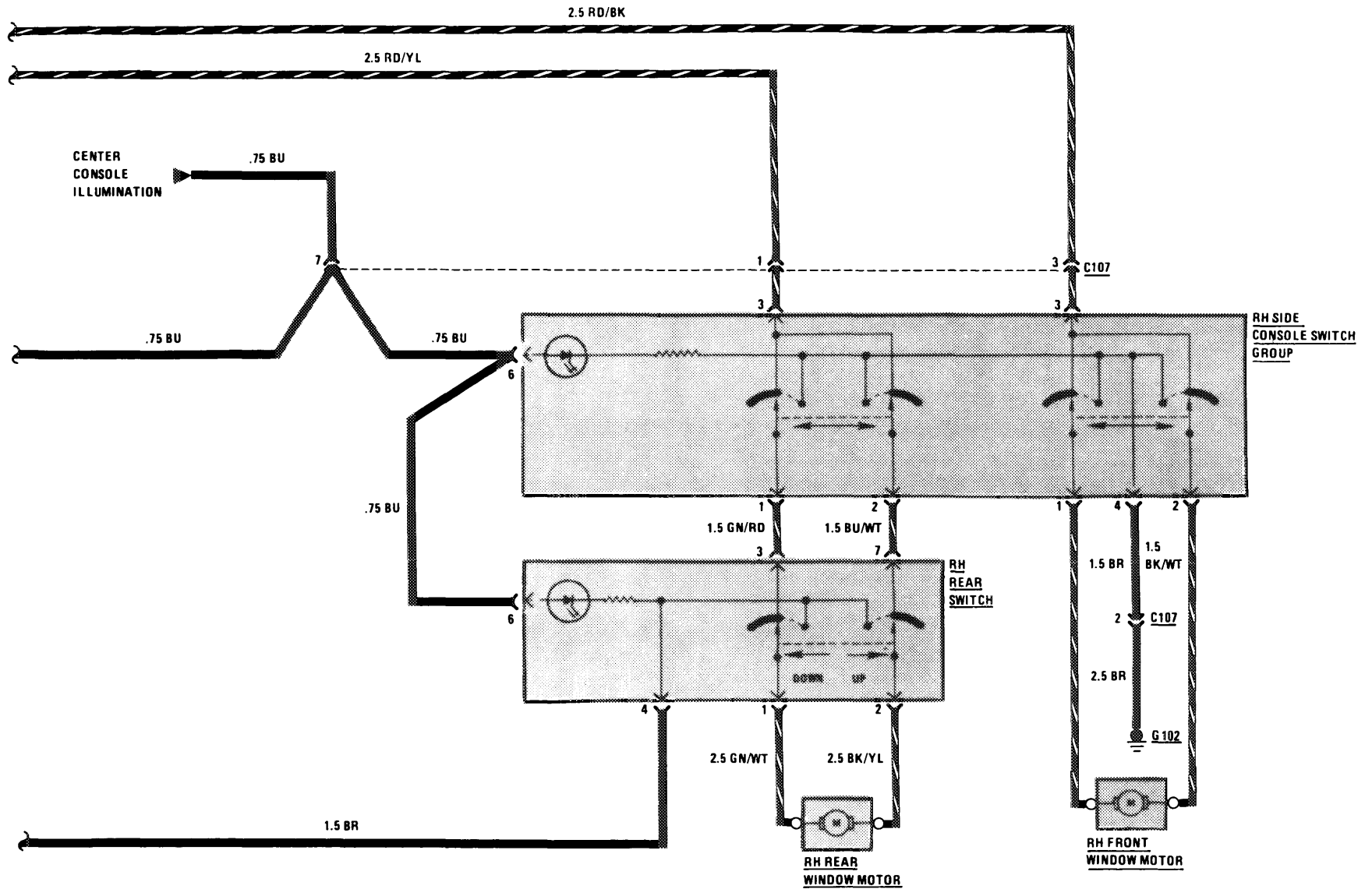
REVISIONS:

# POWER WINDOWS

(For Component Locations See Page 204)

2/83

123.123



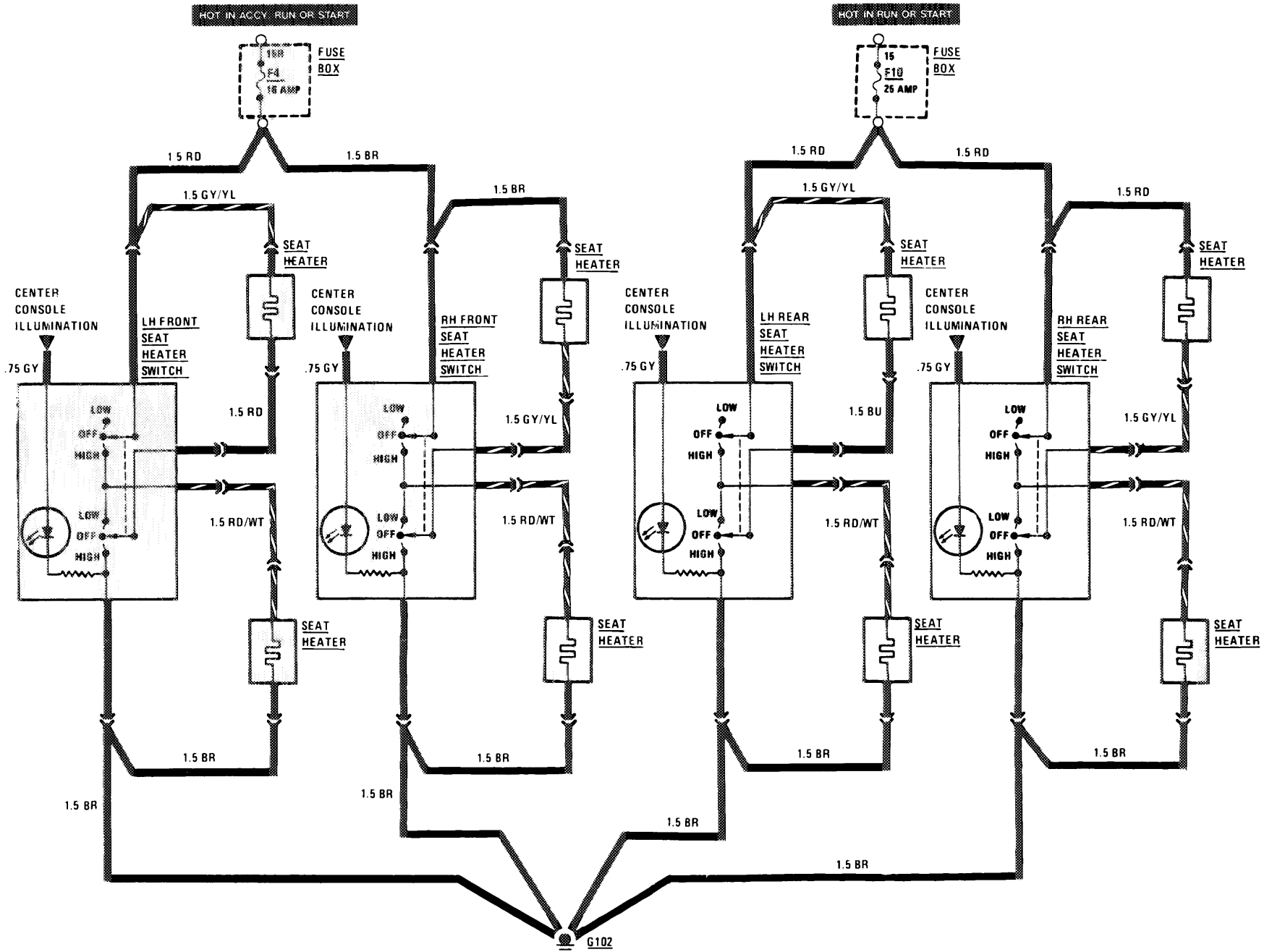
REVISIONS:

129



# HEATED SEATS

(For Component Locations See Page 203)



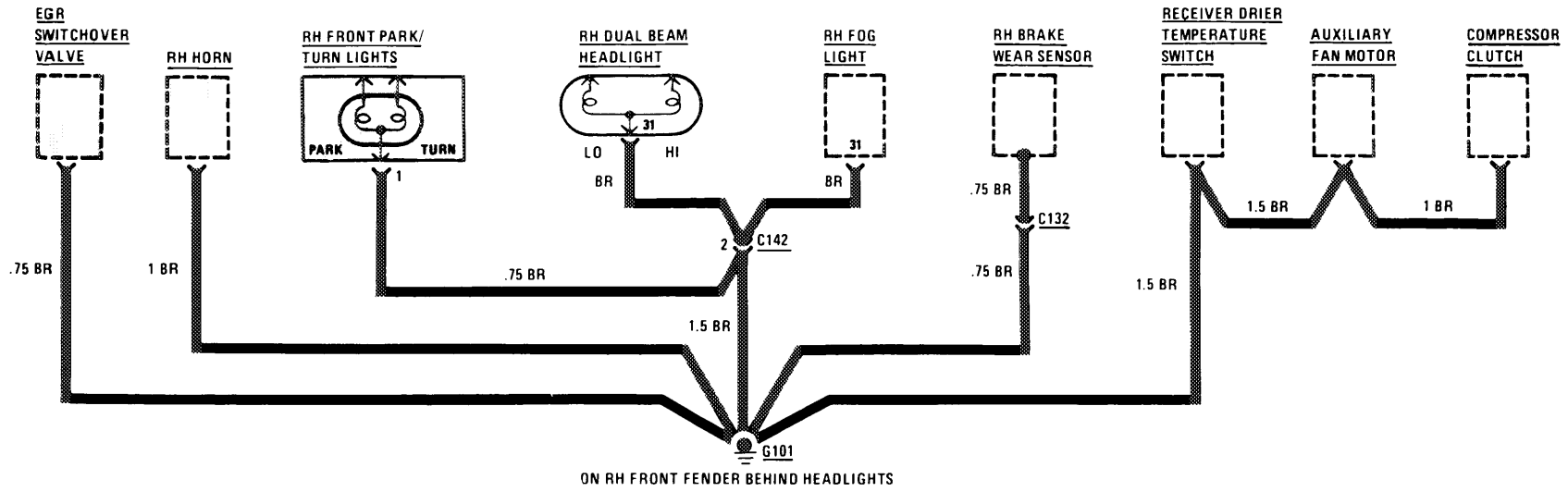
123.123

131

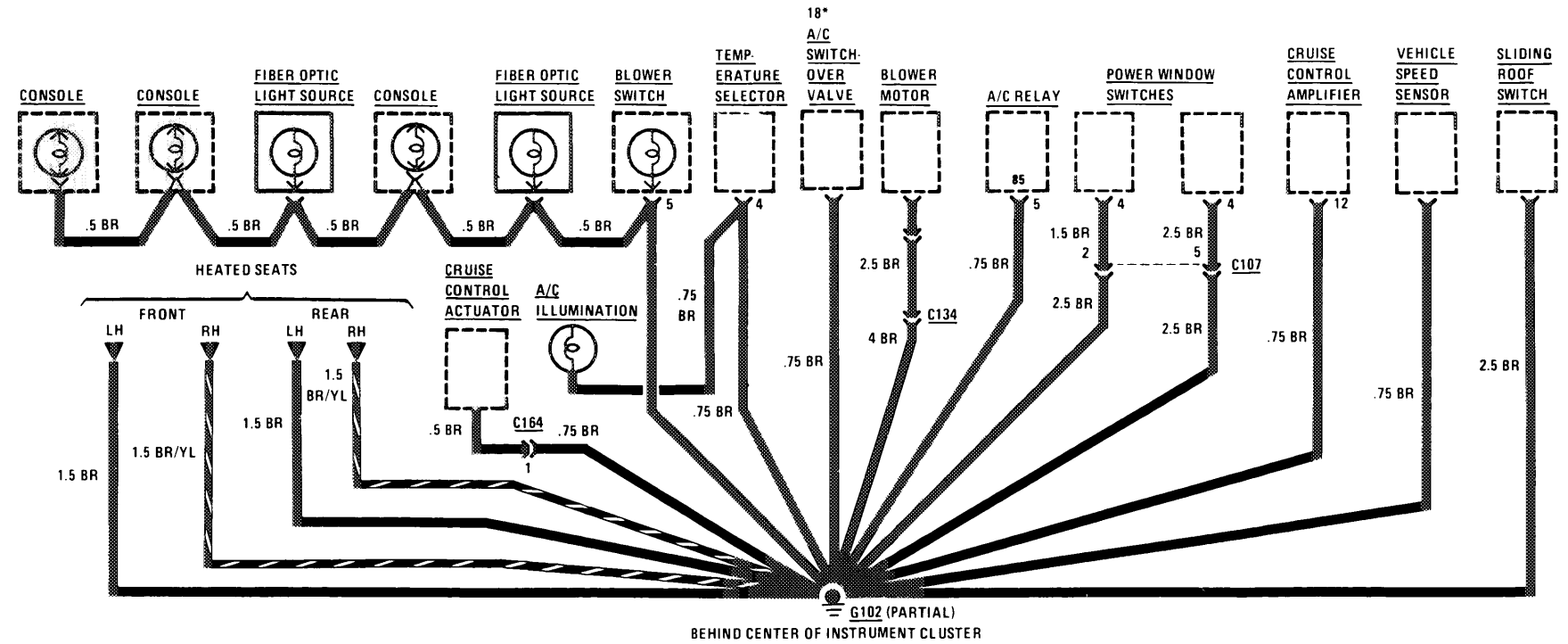
REVISIONS:

GROUND DISTRIBUTION

132



123.123



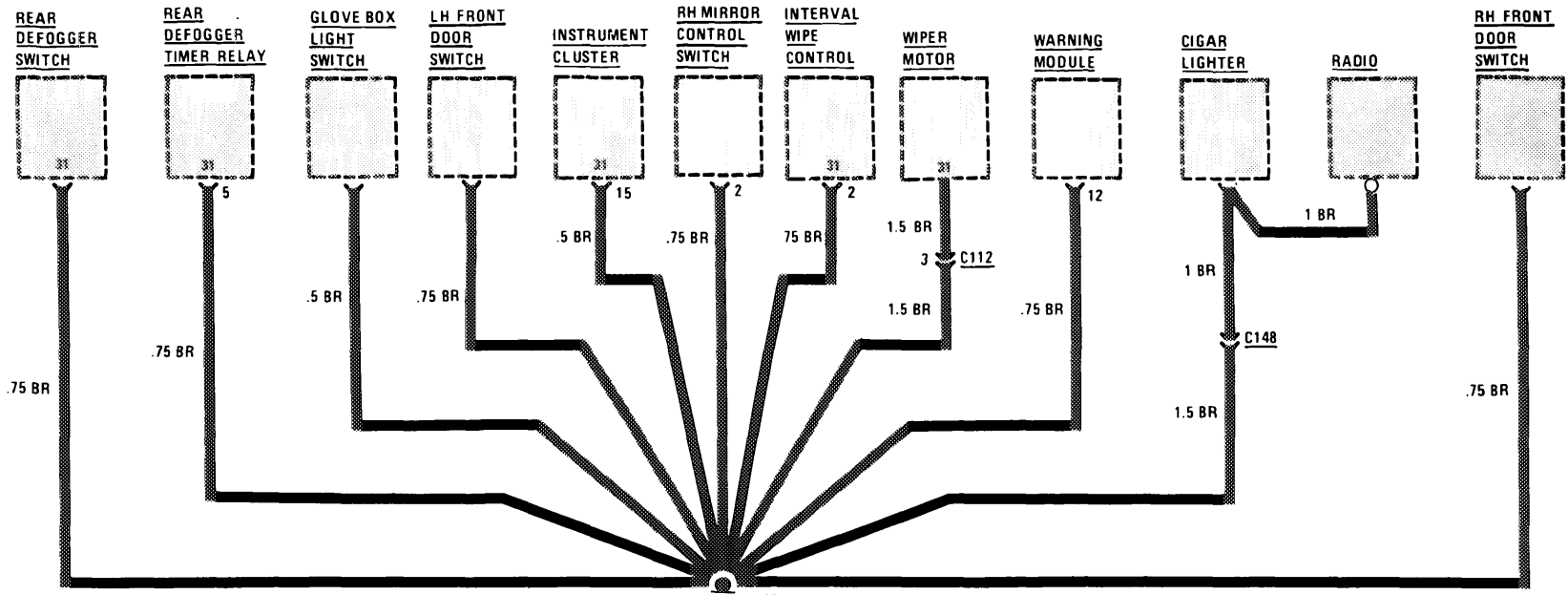
REVISIONS:

2/83

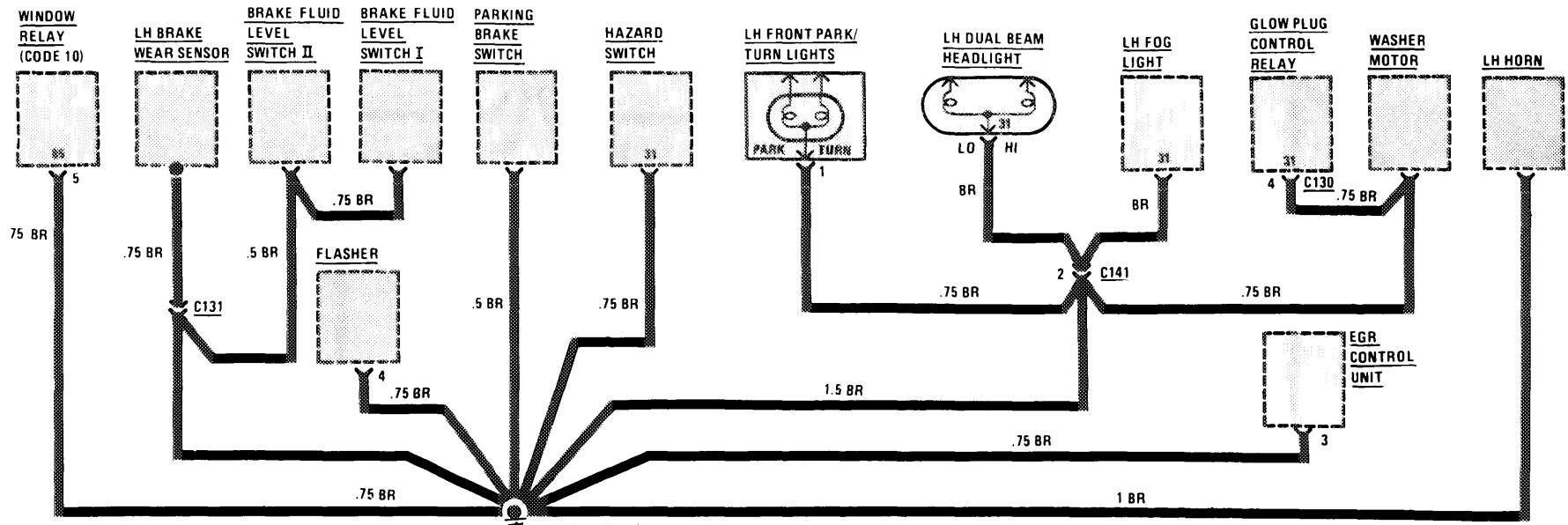


# GROUND DISTRIBUTION

2/83



**G102**  
BEHIND CENTER OF INSTRUMENT CLUSTER



**G102 (PARTIAL)**  
BEHIND CENTER OF INSTRUMENT CLUSTER

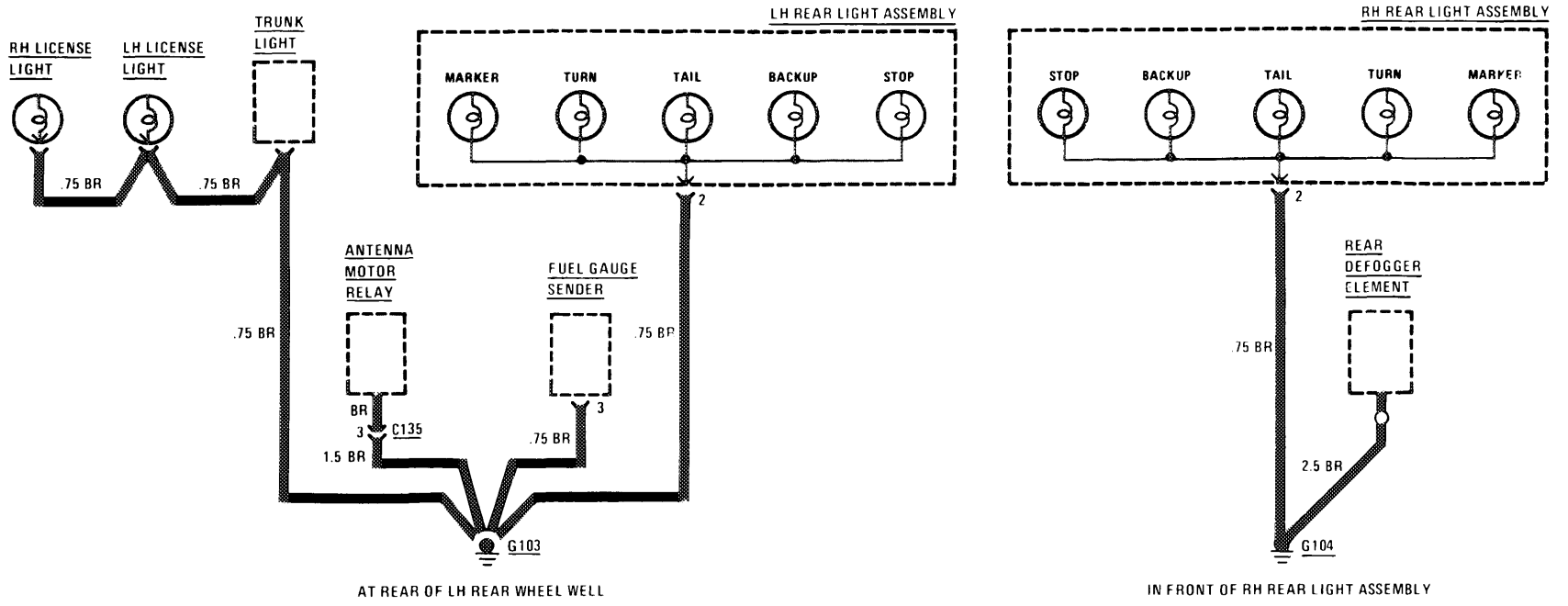
123.123

133

REVISIONS:

GROUND DISTRIBUTION

134



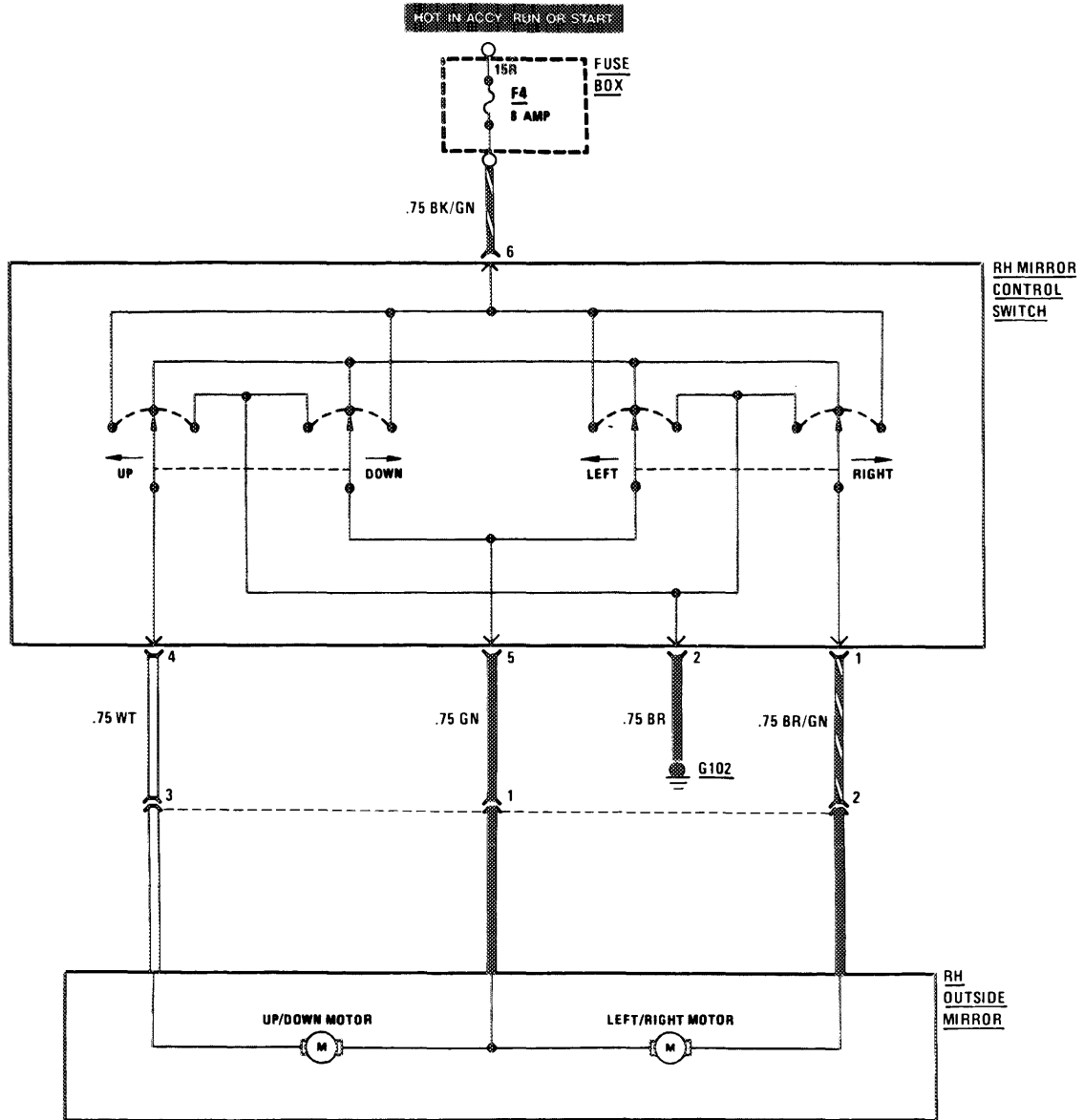
123.123

REVISIONS:

2/83

# RH OUTSIDE MIRROR

(For Component Locations See Page 210)



123.123

REVISIONS: