

A. Model 115.1

V-belt dimensions

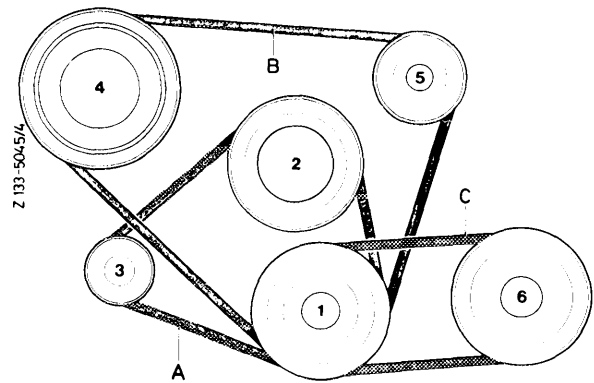
V-belt	A alternator/ water pump	B refrigerant compressor	C power steering pump
Engine	615	9.5 x 940 ¹⁾	12.5 x 750
	616	9.5 x 960	
	617	9.5 x 970	
Adjusting value KG-scale on measuring instrument	20-25	40-45	

¹⁾ Replacement for 9.5 x 935

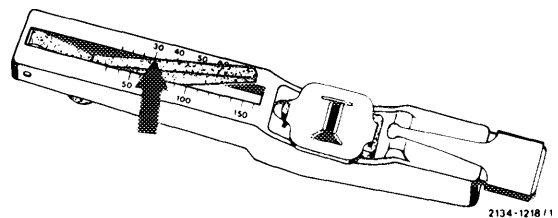
Note

For handling measuring instrument refer to operating instructions.

- | | |
|--------------|--------------------------|
| 1 Crankshaft | 4 Refrigerant compressor |
| 2 Water pump | 5 Tensioning roller |
| 3 Alternator | 6 Power steering pump |



The adjusting data named refer to KG-scale of measuring instrument (arrow).

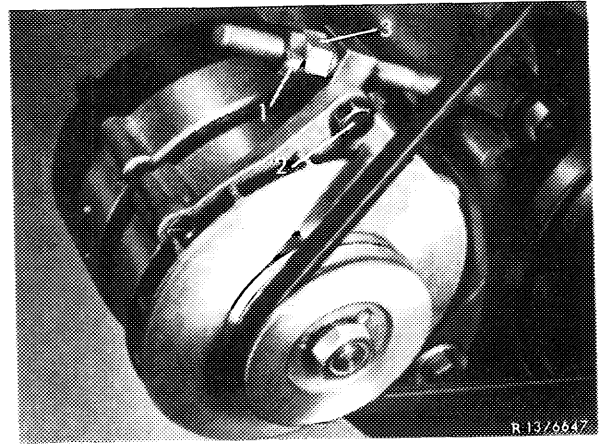


Tensioning

V-belt A Alternator – water pump

Version up to August 1973

- 1 Loosen counter-nut (1) and fastening screw (2).
- 2 Tension V-belt with tensioning nut (3).
- 3 Counter-lock tensioning nut and tighten fastening screw.



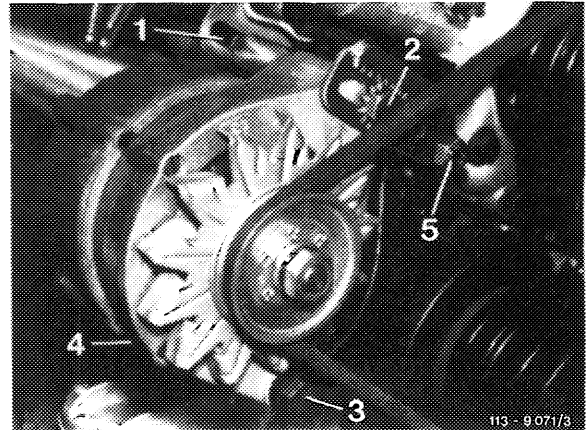
V-belt A Alternator – water pump

Version starting August 1973

- 1 Loosen nut (4) of fastening screw (3) and nut (1) of tensioning screw (2).

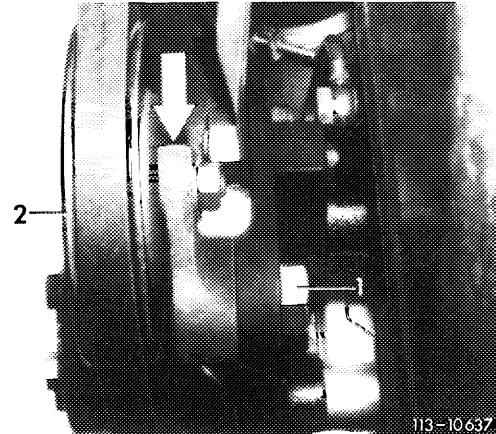
Note: When renewing V-belt, also loosen bottom screw (5).

- 2 Tension V-belt with tensioning screw (2) and tighten nut (1).
- 3 Tighten nut (4) of fastening screw (3).



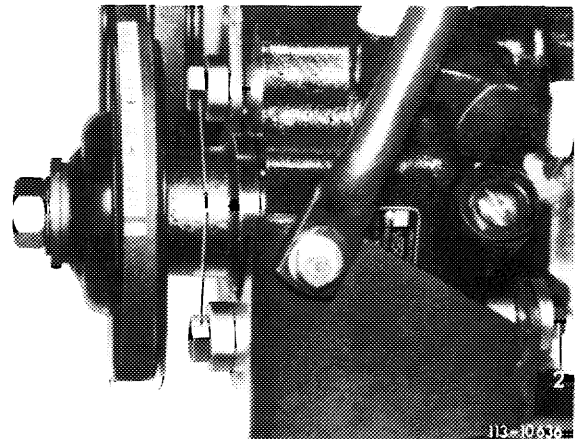
V-belt B Refrigerant compressor

- 1 Loosen fastening screw (1).
- 2 Tension V-belt by swivelling tensioning roller (2).
- 3 Tighten fastening screw.



V-belt C Power steering pump

- 1 Loosen fastening screws (1 and 2).
- 2 For tensioning V-belt, push power steering pump outwards by means of a lever.
- 3 Tighten fastening screws (1 and 2).



B. Model 123.1 (1st version up to February 1979)

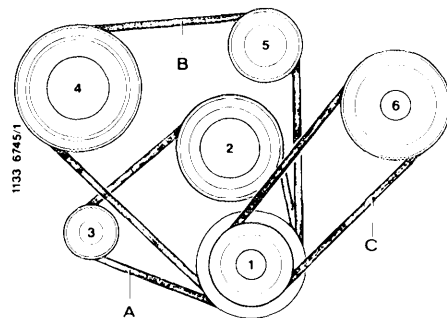
V-belt dimensions

V-belt		A alternator/ water pump	B refrigerant compressor	C power steer- ing pump
	615	9.5 x 940		
Engines	616	9.5 x 970	12.5 x 1350	12.5 x 1150
	617	9.5 x 980		
Adjusting value KG-scale on measuring instrument		20–25		40–45

Note

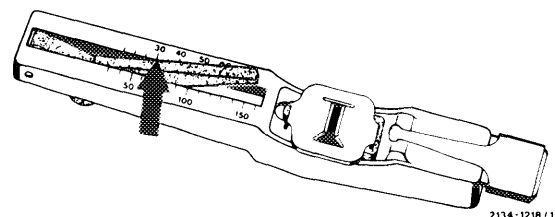
Do not replace pulleys with pulleys of version 2 (starting February 1979) (section C).

- | | |
|--------------|--------------------------|
| 1 Crankshaft | 4 Refrigerant compressor |
| 2 Water pump | 5 Tensioning roller |
| 3 Alternator | 6 Power steering pump |



For handling measuring instrument refer to operating instructions.

The adjusting data named refer to KG-scale of measuring instrument (arrow).



Tensioning

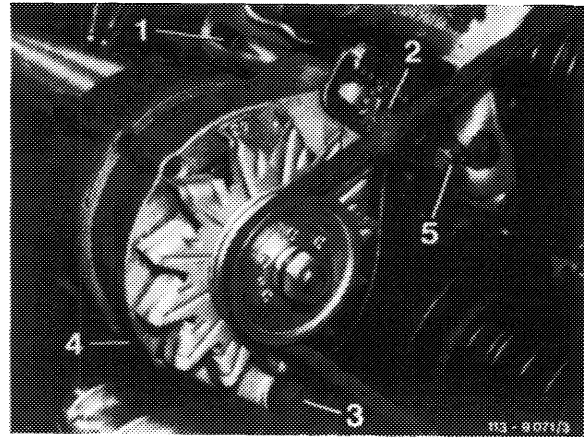
V-belt A Alternator – water pump

1 Loosen nut (4) of fastening screw (3) and nut (1) of tensioning screw (2).

Note: When renewing V-belts, also loosen bottom screw (5).

2 Tension V-belt with tensioning screw (2) and tighten nut (1).

3 Tighten nut (4) of fastening screw (3).

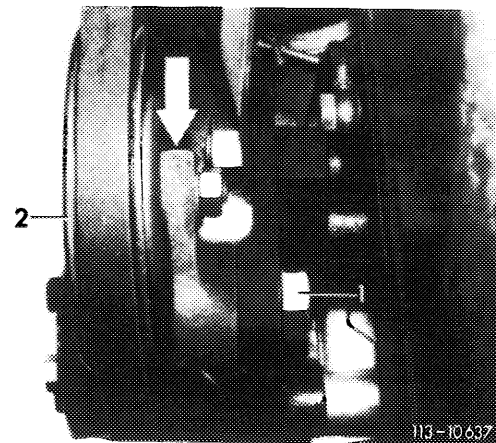


V-belt B Refrigerant compressor

1 Loosen screw (1).

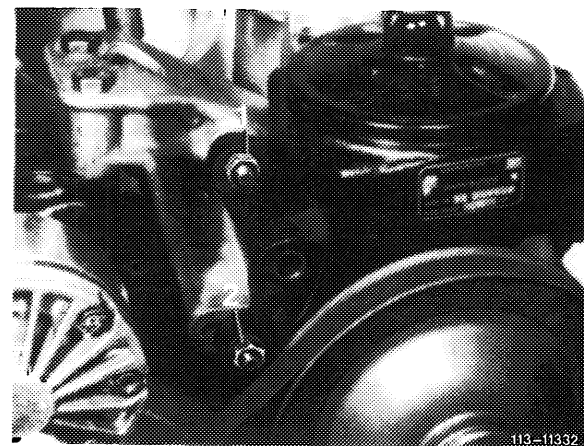
2 Tension V-belt by swivelling tensioning roller (2)

3 Tighten fastening screw.



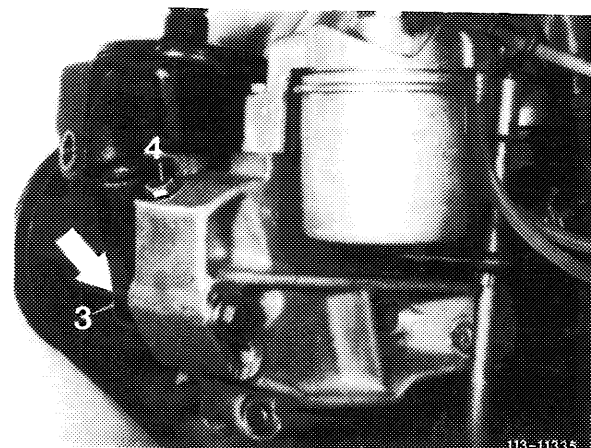
V-belt C Power steering pump

1 Loosen nuts (1, 2 and 3, arrow).



2 Tension V-belt by means of tensioning screw (4).

3 Tighten nuts (1, 2 and 3).



C. Typ 123.1 (2nd version starting February 1979)

V-belt dimensions

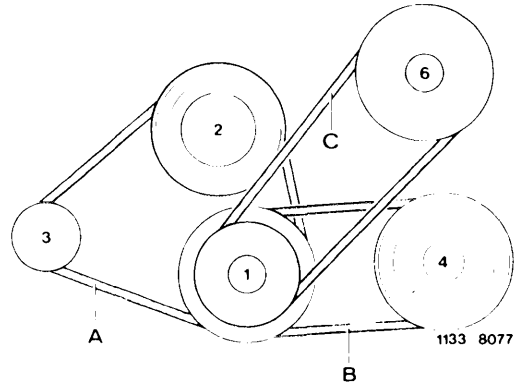
V-belts	A alternator/ water pump	B refrigerant compressor	C power steering pump
	12.5 x 1030 ¹⁾	12.5 x 875	12.5 x 1145
Adjusting value KG-scale on measuring instrument		40–45	

¹⁾ Engine 616.912 with automatic transmission provided with V-belt 12.5 x 1000.

Note

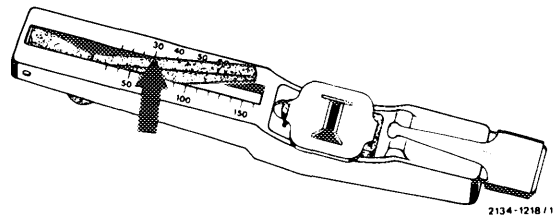
Do not replace pulleys with pulleys of version 1 (up to February 1979) (section B).

- | | |
|--------------|--------------------------|
| 1 Crankshaft | 4 Refrigerant compressor |
| 2 Water pump | 6 Power steering pump |
| 3 Alternator | |



For handling measuring instrument refer to operating instructions.

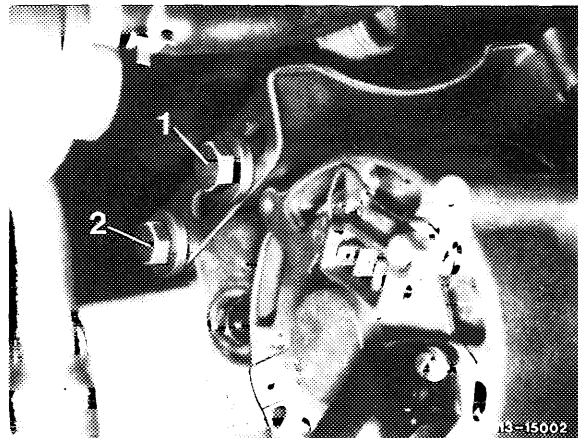
The adjusting data named refer to KG-scale of measuring instrument (arrow).



Tensioning

V-belt A Alternator – water pump

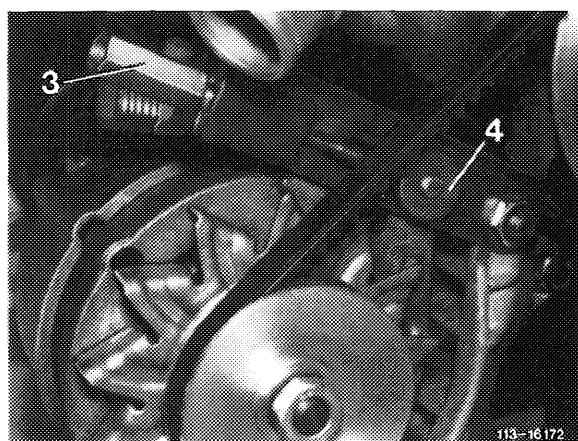
1 Loosen screw (1).



2 Tension V-belt by means of nut (3) of tensioning screw (4).

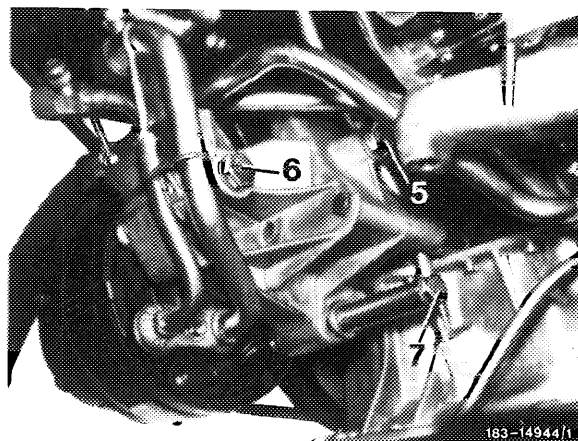
3 Tighten screw (1).

4 Turn nut (3) for another approx. 1/4 to 1/2 turn for tension.



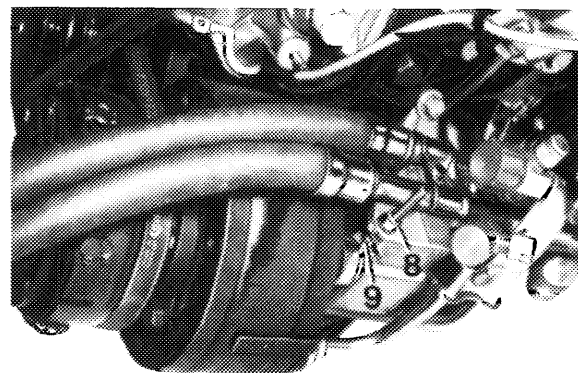
V-belt B Refrigerant compressor

1 Loosen screws (5, 6 and 7).



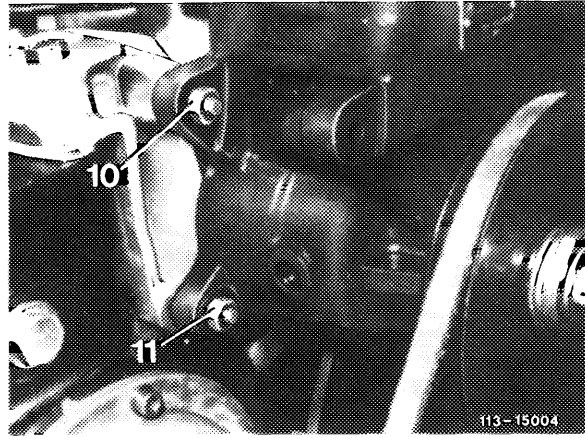
2 Tension V-belt with nut (8) of tensioning screw (9).

3 Tighten screws (5, 6 and 7).



V-belt C Power steering pump

- 1 Loosen nuts (10, 11 and 12).



- 2 Tension V-belt with tensioning screw (13).
- 3 Tighten nuts (10, 11 and 12).

