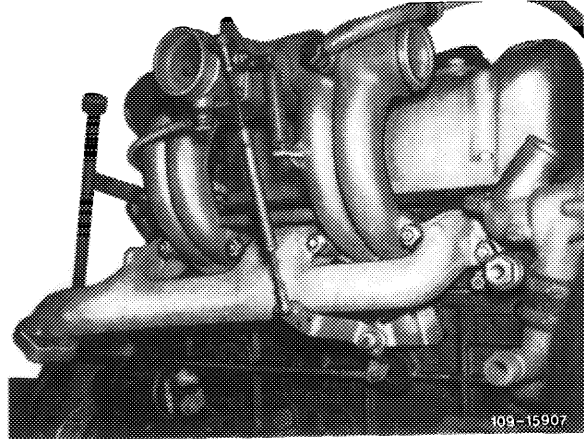


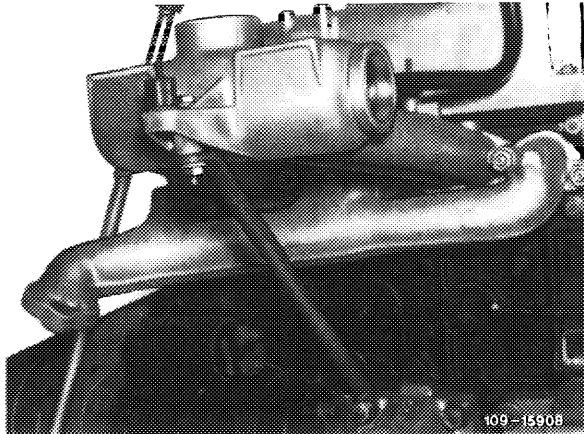
Removal

- 1 Remove air cleaner or scoop.
- 2 Disconnect regulating linkage.
- 3 On engine 615, 616 with choke control, unscrew vacuum lines.



Engine 615, 616

- 4 On engines without choke control, unscrew support on intake pipe.



Engine 615, 616

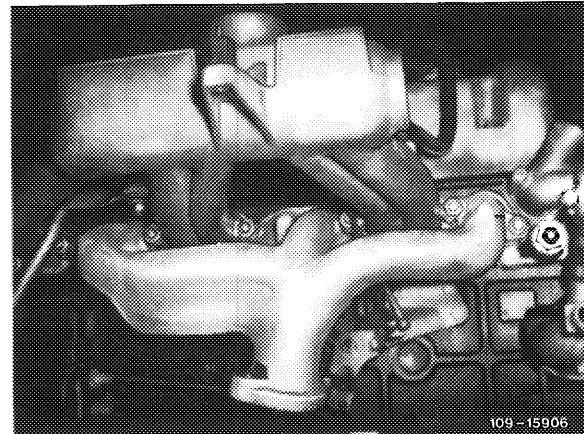
Note: Engine 617 is also provided with a support on intake pipe.

Installation: February 1979

Engine	starting engine end no.				
617.912	<table border="0" style="margin-left: 20px;"> <tr> <td>manual transmission</td> <td>074930</td> </tr> <tr> <td>automatic transmission</td> <td>068719</td> </tr> </table>	manual transmission	074930	automatic transmission	068719
manual transmission	074930				
automatic transmission	068719				

Model	starting chassis end no.
123.130	134304
123.150	003895

Engine 617

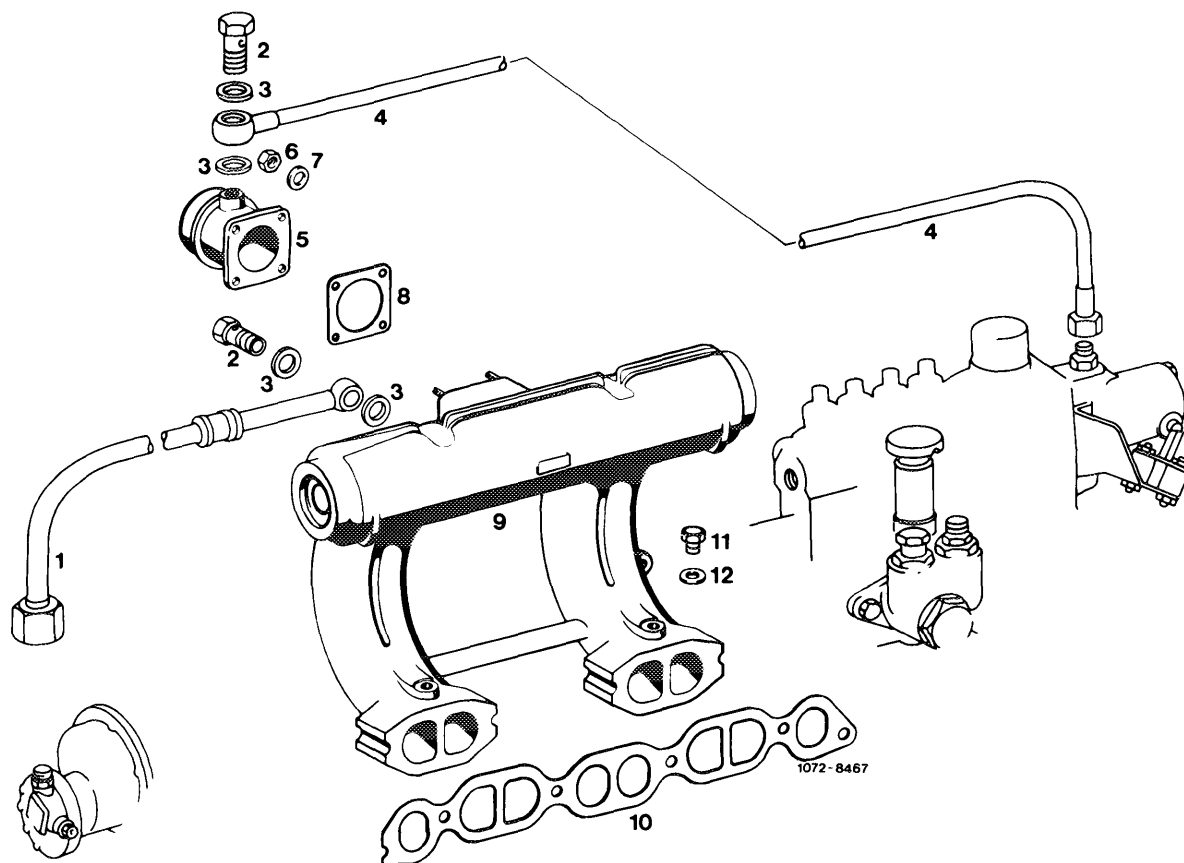


- 5 Remove cylinder crankcase breather.
- 6 Remove exhaust system (49–100).
- 7 Loosen fastening nuts and remove intake pipe together with exhaust manifold.
- 8 Clean intake pipe and check flange surfaces with straightedge, touch up on surface plate, if required.

Installation

- 9 For installation use new gasket and proceed vice versa.
- 10 Adjust regulating linkage (30–300).
- 11 Run engine, check intake system for leaks by spraying with Iso-Oktan DIN 51756 or benzine.
- 12 Adjust idle speed (07.1–100).

Intake system
 Engine 615, 616

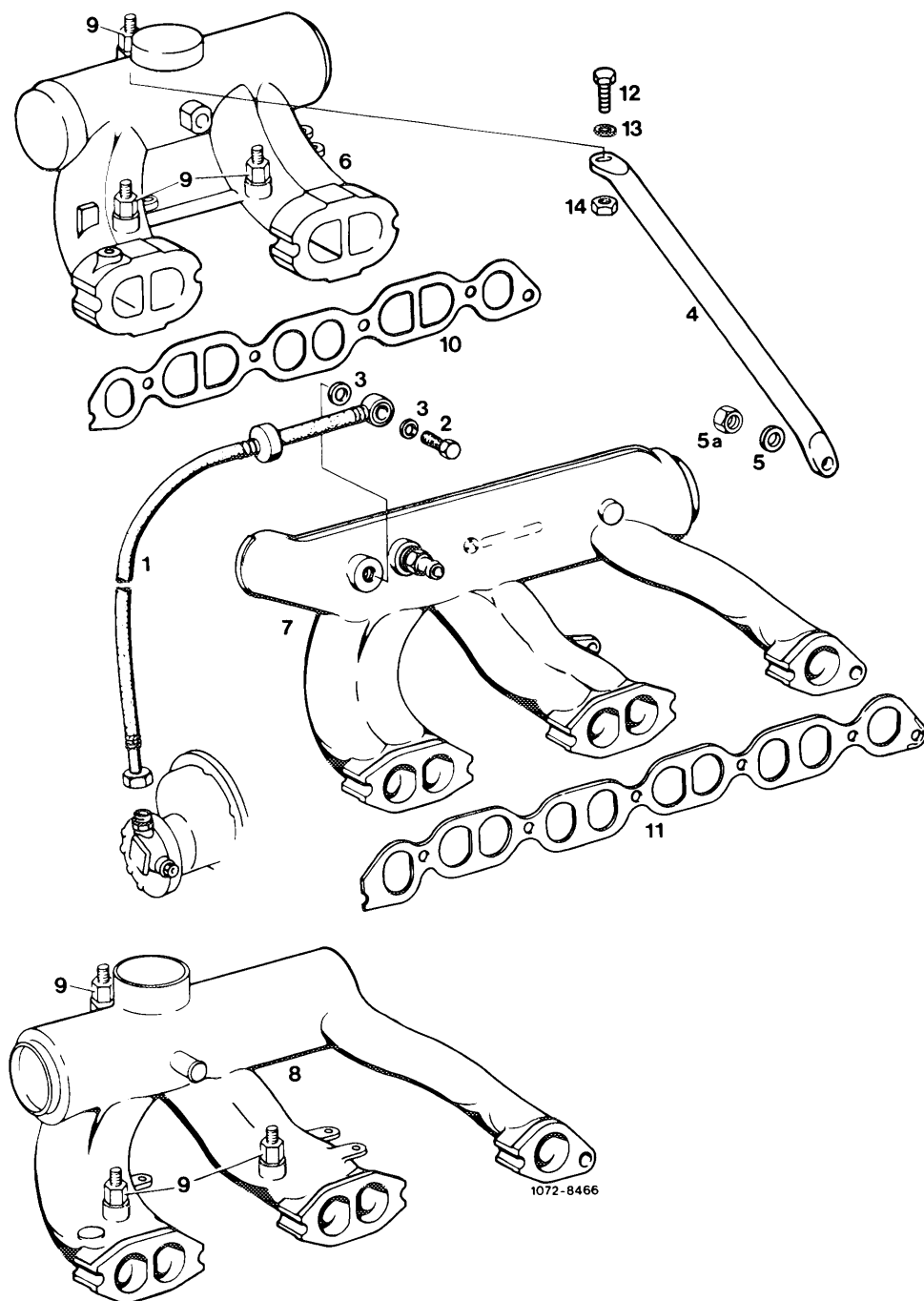


- 1 Vacuum line to vacuum pump
- 2 Hollow screw
- 3 Sealing ring
- 4 Vacuum line to injection pump

- 5 Choke control
- 6 Nut
- 7 Washer
- 8 Gasket

- 9 Intake pipe
- 10 Gasket
- 11 Closing plug
- 12 Sealing ring

Engine 615, 616, 617



- 1 Vacuum line to vacuum pump ¹⁾
- 2 Hollow screw
- 3 Sealing ring
- 4 Strut engine 615, 616, 617
- 5 Washer
- 5a Nut

- 6 Intake pipe engine 615, 616
- 7 Intake pipe engine 617 in model 115.1
- 8 Intake pipe engine 617 in model 123.1
- 9 Vibration mount
- 10 Gasket
- 11 Gasket

- 12 Screw
- 13 Washer
- 14 Nut
- 15 Nut

1) not with piston pump.