

**Test value**

---

Boost pressure at full-load, driving  
range position „L” or „S” and  $n = 4000/\text{min}$

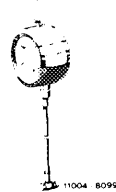
0.7-0.8 bar  
gauge pressure

---

**Special tool**

---

Tester 0—1.6 bar gauge pressure



617 589 02 21 00

---

**Conventional tester**

---

Digital tester (or revolution counter installed  
in vehicle)

e.g. Bosch, MOT 001.03

---

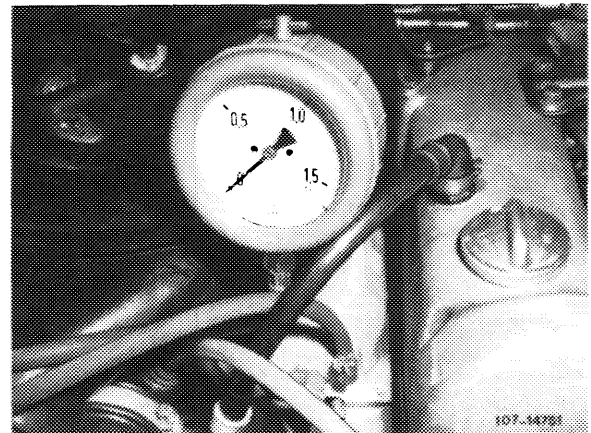
**Checking**

---

**A. On boost air pipe**

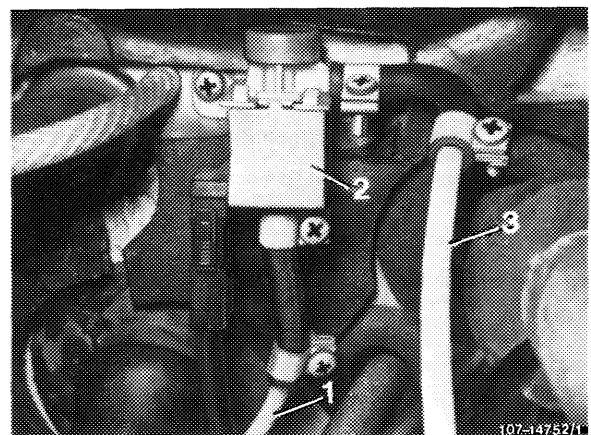
Connect boost pressure tester to intake manifold,  
unscrewing plug for this purpose.

**Note:** Tester connecting thread M 10 x 1.



**B. On switchover valve**

Connect boost air tester to switchover valve with  
Y-distributor, output of switchover valve.



- 1 Pressure line to boost air pipe
- 2 Switchover valve
- 3 Pressure line to ALDA capsule

1 Test on dynamometer.

Drive vehicle in driving range „S” at full-load and  $n = 4000/\text{min}$ . The prescribed boost pressure must be obtained.

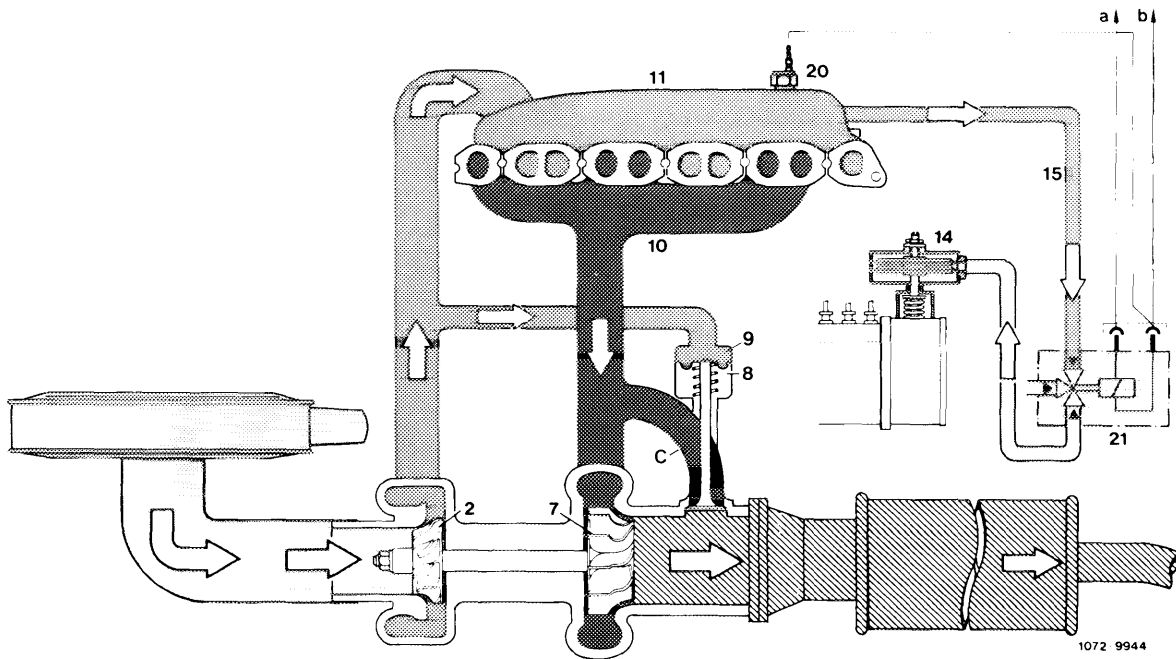
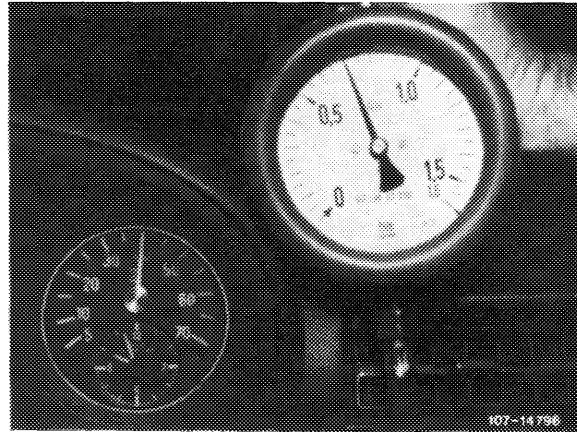
Check the trouble-shooting hints if system fails to reach specified boost pressure.

2 Road test.

**Note:** The full-load test must be kept as short as possible because the total driving energy has to be absorbed by the vehicle’s own brakes.

Road-test the vehicle in driving range „L” or „S” at full-load and  $n = 4000/\text{min}$ , placing tester in vehicle interior for this purpose. Accelerate to full throttle while holding at 4000/min with the aid of service brakes (No. 2 in illustration). The prescribed boost pressure must be reached.

Check the trouble-shooting hints if system fails to reach specified boost pressure.



Function diagram

- |                                |   |                                      |
|--------------------------------|---|--------------------------------------|
| 2 Compressor wheel             | 11 Boost air pipe                       | a Fuse terminal 15                   |
| 7 Turbine wheel                | 14 ALDA-capsule                         | b Switching unit overload protection |
| 8 Boost pressure control valve | 15 Pressure line                        | c Exhaust gas toward bypass duct     |
| 9 Connecting hose              | 20 Pressure switch boost air pipe       |                                      |
| 10 Exhaust manifold            | 21 Switchover valve overload protection |                                      |