

Turbocharger designation

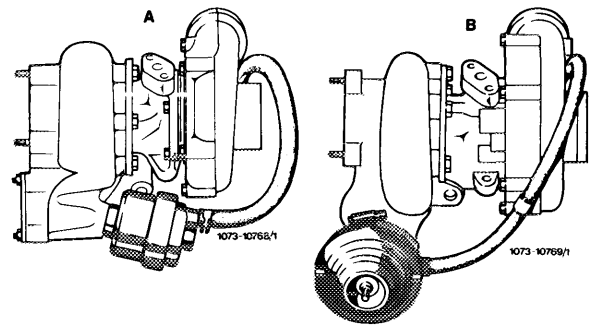
Garret TA 0301

Kühnle Kopp and Kausch KKK 532 679 60 31¹⁾

1) Start of production

World-wide except (USA): January 1983

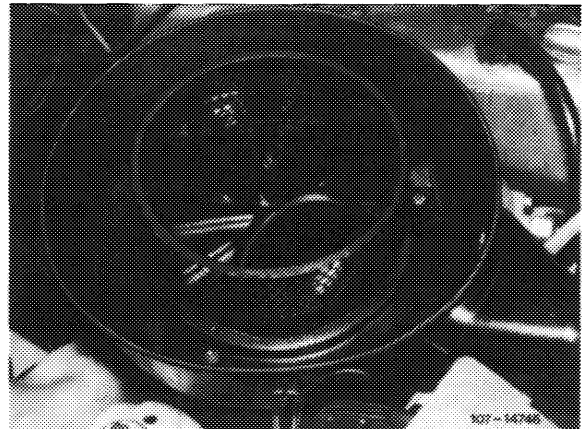
(USA): February 1983



A Garret turbocharger
B KKK turbocharger

Removal

1 Remove air filter, detaching air filter cover and unscrewing 3 fastening nuts.

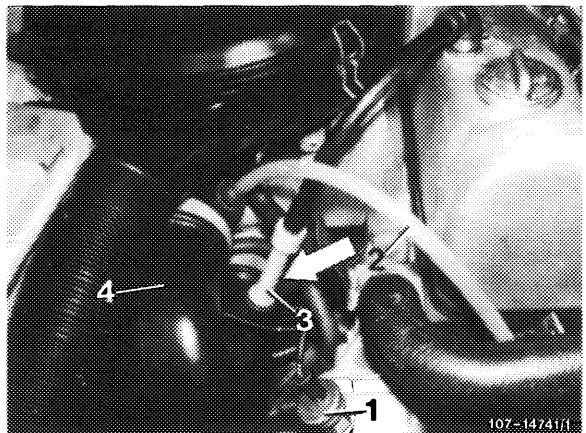


2 On vehicles with automatic climate control or air-conditioning remove electric line for 100° C temperature switch (1).

3 Release lower hose clip (arrow) on intake line (4) from air filter to compressor housing. On vehicles up to model 1979 only.

4 Remove vacuum line (2) and crankcase ventilation pipe (3).

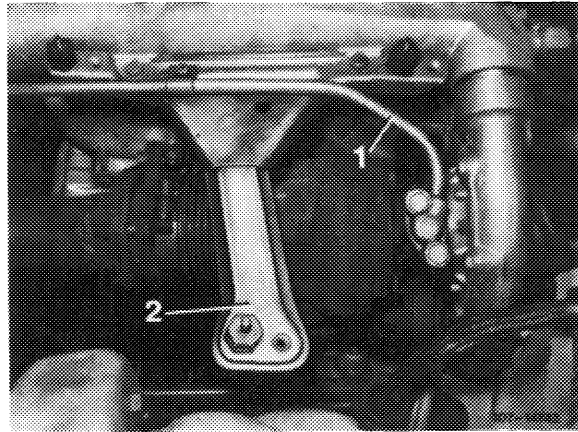
5 Remove air filter with intake line (4).



- 1 Temperature switch 100° C
- 2 Vacuum line
- 3 Crankcase ventilation pipe
- 4 Intake line

6 Unscrew engine oil supply line (1).

7 Unscrew air filter holder (2). To do so, release 3 hex-head bolts (2 from above, 1 from below) and remove holder.

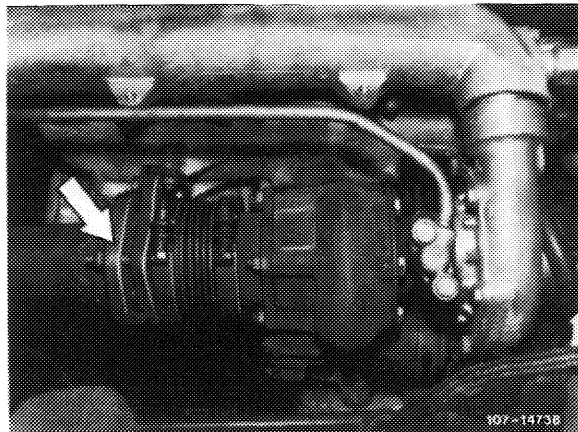


1 Engine oil supply line
2 Air filter holder

8 Unscrew exhaust flange (arrow).

9 Release and remove exhaust holder on automatic transmission.

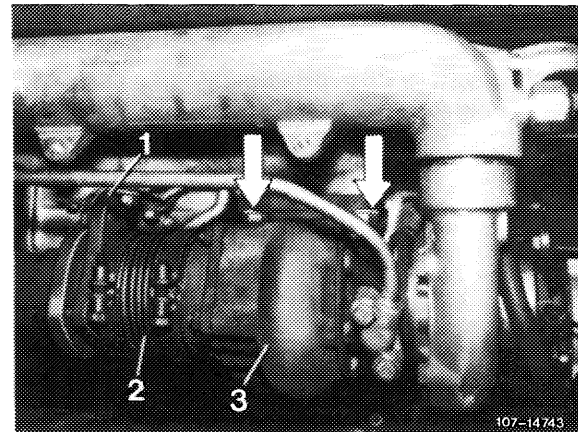
10 Force exhaust pipe toward rear.



11 Unscrew holder (1) for adapter fitting (2).

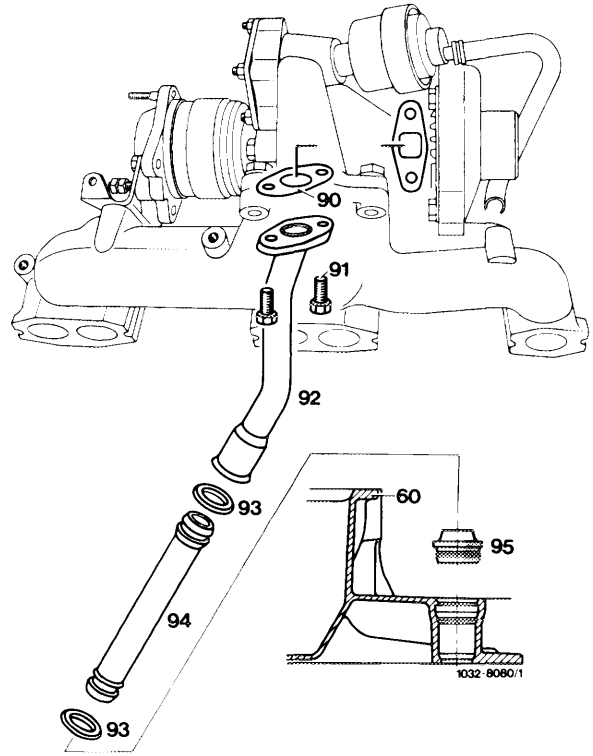
12 Unscrew 4 fastening nuts (arrows) at exhaust-driven turbocharger and remove turbocharger.

13 Unscrew adapter fitting (2) at exhaust-driven turbocharger (3).



1 Holder
2 Adapter fitting
3 Turbocharger

14 Unscrew oil return pipe (92) at turbocharger.



- 60 Oil pan, upper part
- 90 Gasket
- 91 2 bolts M 8 x 20
- 92 Oil return pipe (upper part)
- 93 O-ring
- 94 Oil return pipe (lower part)
- 95 Sectional seal

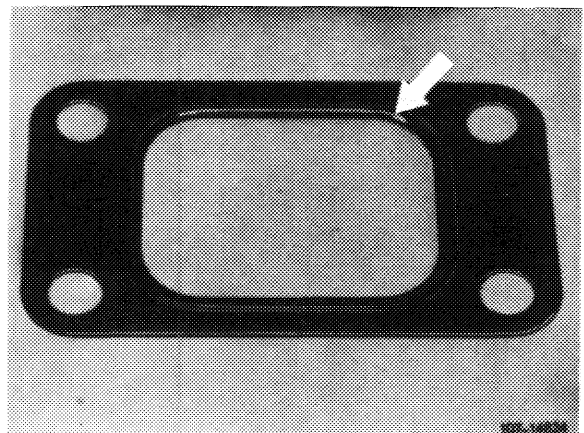
Installation

Install in reverse order, using new gaskets (repair set). Please note the following points:

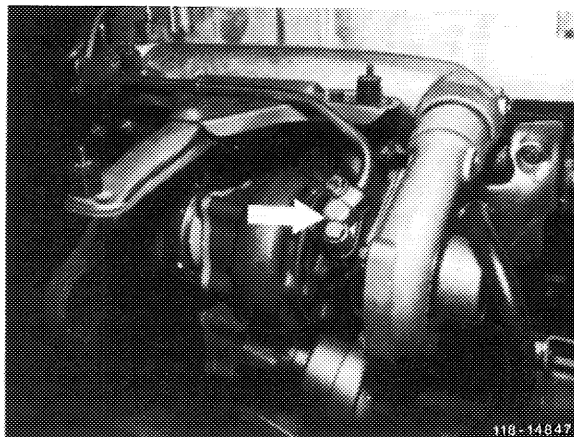
15 Prior to installing turbocharger, attach adapter fitting and oil return pipe. Correct positioning is absolutely essential.

16 Insert flange gasket between turbocharger and exhaust manifold so that bead (arrow) is at exhaust manifold side.

17 Always use heat-resistant nuts and bolts to attach the turbocharger.

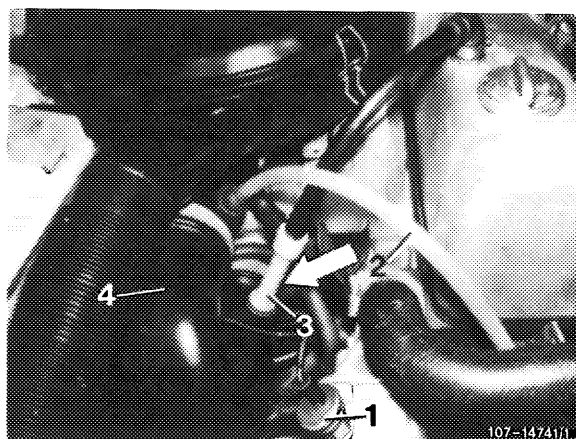


18 Prior to using a replacement turbocharger, fill with approx. 1/8 l engine oil through engine oil supply hole (arrow).

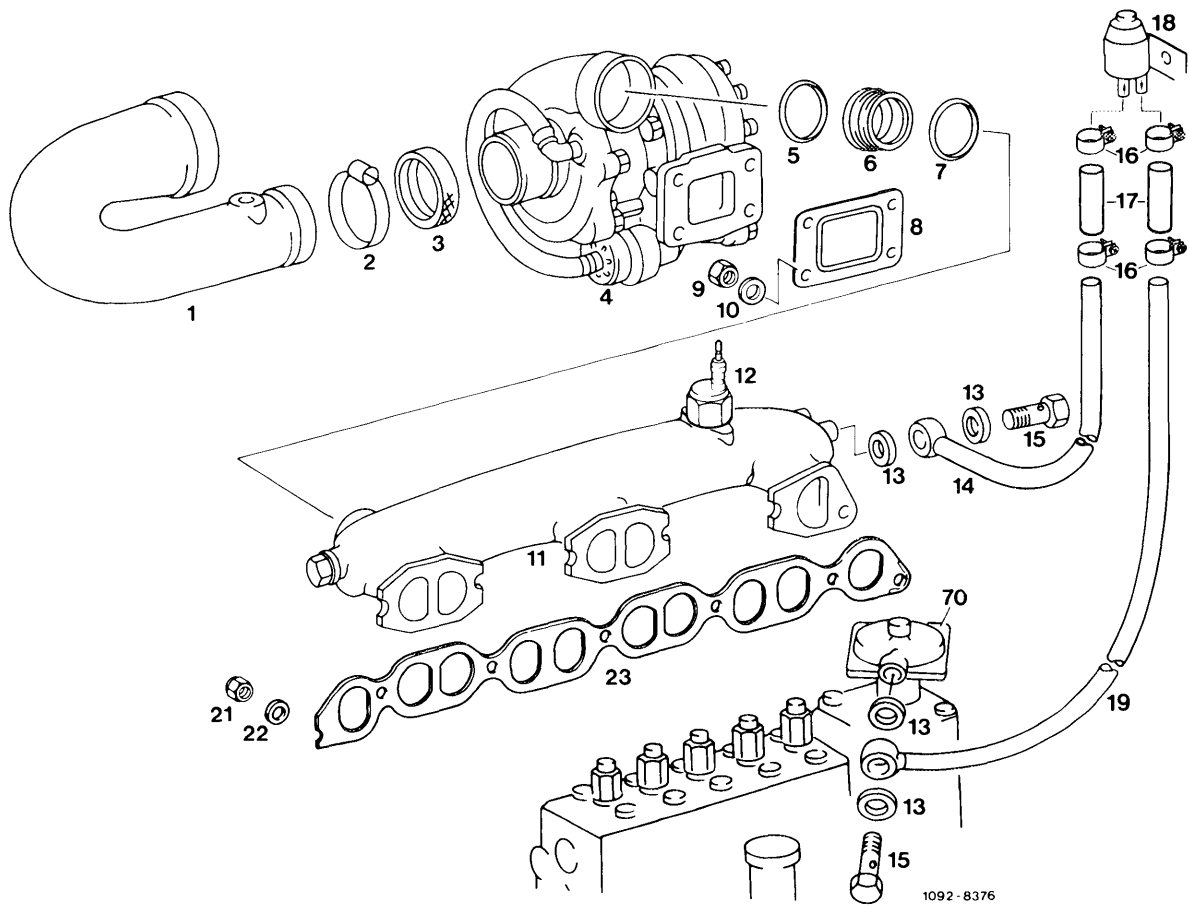


19 Make sure that intake line (4) is fitted in such a way that rubber sealing rings are correctly positioned.

- 1 Temperature switch
- 2 Vacuum line
- 3 Ventilation pipe
- 4 Intake line



A. Exhaust Gas Turbocharger



- | | | |
|-----------------------|---------------------------------------|---|
| 1 Intake line | 9 Heat-resistant nut | 17 Connecting hose |
| 2 Hose clip | 10 Washer | 18 Switchover valve |
| 3 Rubber sealing ring | 11 Intake manifold | 19 Delivery line to aneroid compensator |
| 4 Turbocharger | 12 Pressure switch | 21 Nut |
| 5 Rubber sealing ring | 13 Sealing ring | 22 Washer |
| 6 Adapter fitting | 14 Delivery line from intake manifold | 23 Gasket |
| 7 Rubber sealing ring | 15 Union screw | 70 Aneroid compensator |
| 8 Flange gasket | 16 Hose clip | |