

22-212 Removal and installation of rear engine mount

Tightening torques

Nm

Screws for engine mount on engine carrier

30

Adjusting screw for engine mount (model 123.193)

40

Special tools

Torque wrench with plug-type ratchet,
1/2" square, 25-130 Nm



001 589 66 21 00

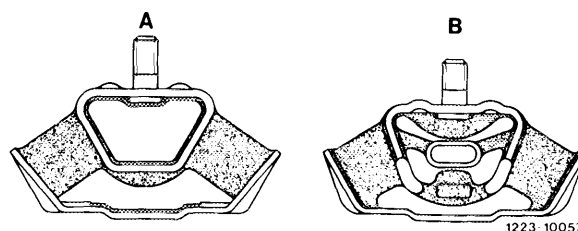
Note

Models 116.120, 123.133/153, 123.193 (USA) (J) version and 126.120 are provided with an engine mount **without stop** since start of series.

Model 123.193 standard version has been provided with an engine mount **with stop** up to July 1981.

Starting July 1981 likewise **without stop**.

For this purpose, vehicles with automatic transmission W 4 B 025 (722.120) had to be provided with a rubber buffer on transmission tunnel to prevent transmission vent from knocking against tunnel.



A Engine mount without stop
B Engine mount with stop

If a new engine mount with stop is installed, the stop requires adjustment after 1000-1500 km and 7500 km (22-220).

Model	Engine mount Part No.	Version
116.120	116 240 04 18	without stop
123.193 ¹⁾	123 242 04 13	with stop
123.133 123.153 123.193 ²⁾	123 240 25 18	without stop
126.120	116 240 04 18	without stop

¹⁾ Standard version up to July 1981.

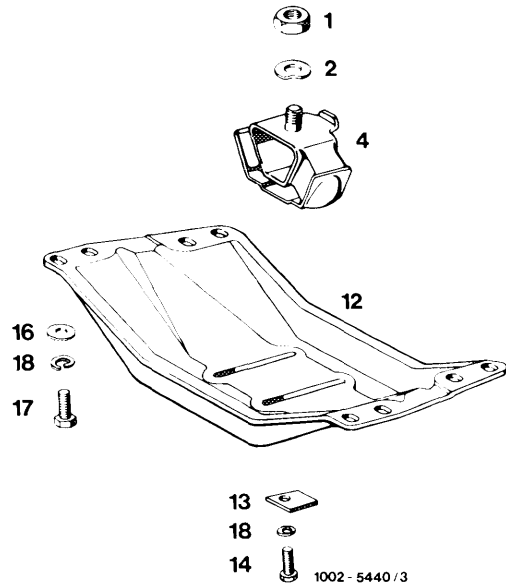
²⁾ Standard version starting July 1981, (J) (USA) version from start of series.

Removal

- 1 Unscrew nuts (1).
- 2 Unscrew screws (14).
- 3 Push transmission in upward direction by means of a pit lift at intermediate flange and remove engine mount (4).

Model 116.120

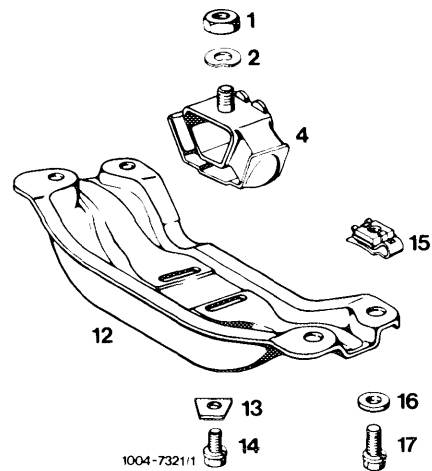
- | | |
|----------------------|----------------------|
| 1 Nut M 12 x 1.5 | 14 2 screws M 8 x 15 |
| 2 Spring washer B 12 | 16 4 washers 8.4 |
| 4 Engine mount | 17 4 screws M 8 x 20 |
| 12 Engine carrier | 18 2 snap rings A 8 |
| 13 2 washers | |



- 4 On model 123.193 standard version up to July 1981, unscrew adjusting screw (11) and take engine mount (4) out of holder.

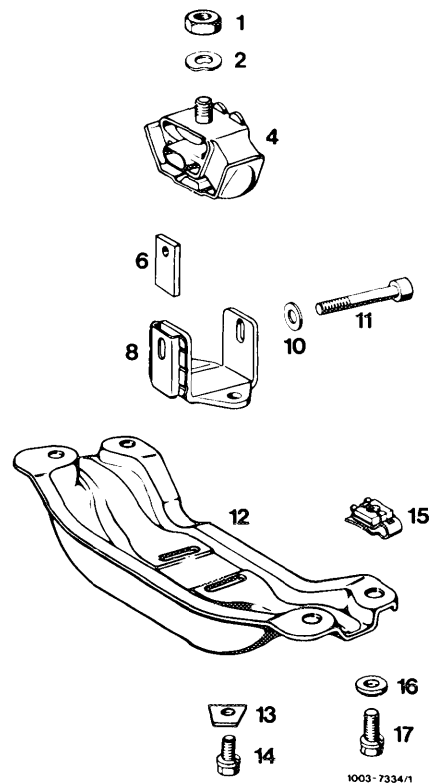
Models 123.133/153 and 123.193 standard version starting July 1981. (J) (USA) version from start of series

- | | |
|----------------------|----------------------|
| 1 Nut M 12 x 1.5 | 14 Combination screw |
| 2 Spring washer B 12 | 15 Cage nut |
| 4 Engine mount | 16 Washer |
| 12 Engine carrier | 17 Combination screw |
| 13 Washer | |



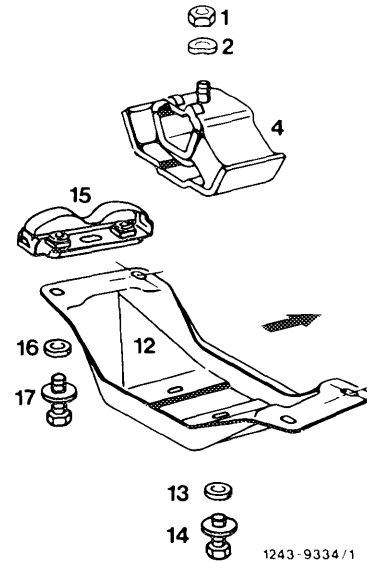
Model 123.193 standard version up to July 1981

- | | |
|-----------------------------|-----------------------|
| 1 Nut M 12 x 1.5 | 12 Engine carrier |
| 2 Spring washer B 12 | 13 2 washers |
| 4 Engine mount | 14 2 screws M 8 x 18 |
| 6 Threaded plate | 15 4 cage nuts |
| 8 Holder | 16 4 washers |
| 10 Washer 8.4 | 17 4 screws M 10 x 22 |
| 11 Adjusting screw M 8 x 75 | |



Model 126.120

- | | |
|-------------------|--------------------------------|
| 1 Nut M 12 x 1,5 | 17 Combination screw M 10 x 22 |
| 2 Spring washer | 13 Washer |
| 4 Engine mount | 14 Combination screw M 8 x 15 |
| 12 Engine carrier | 15 Nut holder |
| 16 Washer 10.5 | |



Installation

- 5 On model 123.193 standard version up to July 1981, place new engine mount into holder (8).
- 6 Place new engine mount with or without holder (depending on model) on engine carrier (12).
- 7 On model 123.193 screw-in adjusting screw (11) (do not tighten).
- 8 Lower transmission.
- 9 Position screws (14) and tighten to 30 Nm.
- 10 Screw-on nut (1). Torque reference value 70 Nm.
- 11 On model 123.193, adjust engine stop (22–220).