

30–310 Removal and installation of engine longitudinal regulating shaft

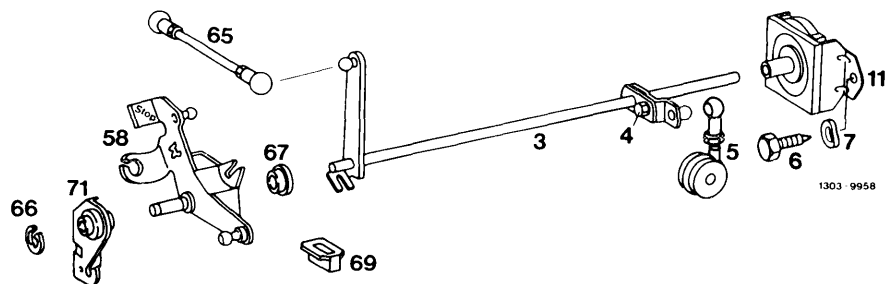
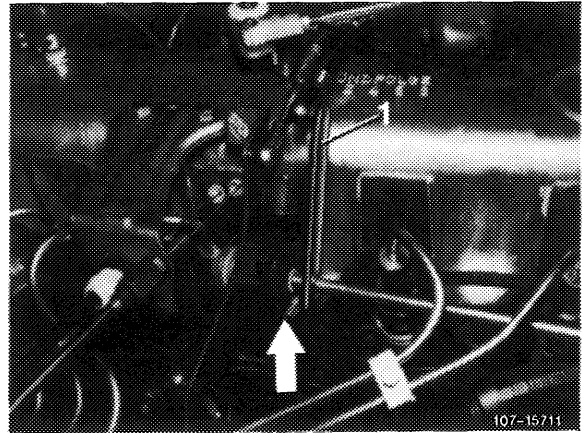
Note

When removing transmission, remove longitudinal regulating shaft, so that bearing on front wall is not damaged by tilting of engine.

A. Model 116.120

Removal

- 1 Disconnect regulating rods.
- 2 Turn longitudinal regulating shaft to the left until groove disengages from clip. Push longitudinal regulating shaft to the rear and remove.



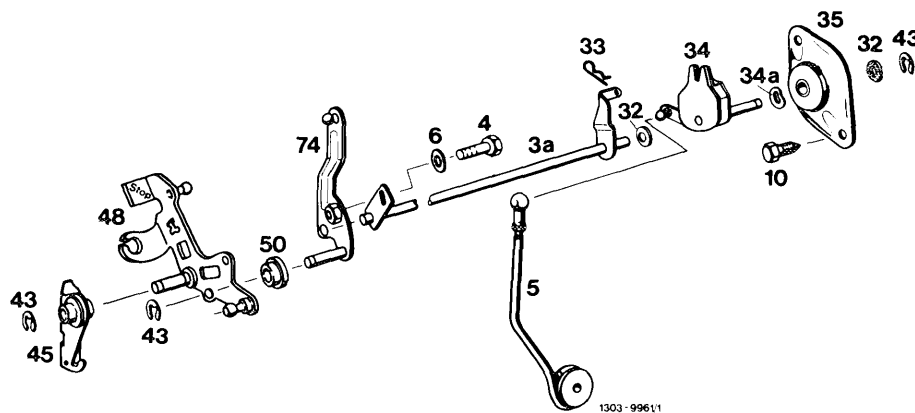
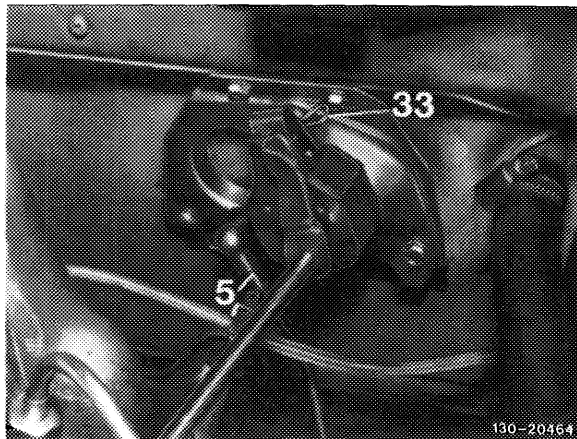
Installation

- 4 For installation proceed vice versa. Grease bearing points as well as ball sockets of regulation with Molykote Longterm 2.
- 5 Adjust throttle linkage (30–300).

B. Model 123.1

Removal

- 1 Remove regulating rod (5) and lock (33).
- 2 Slide longitudinal regulating shaft in forward direction out of bearing on front wall. Then remove toward the rear.



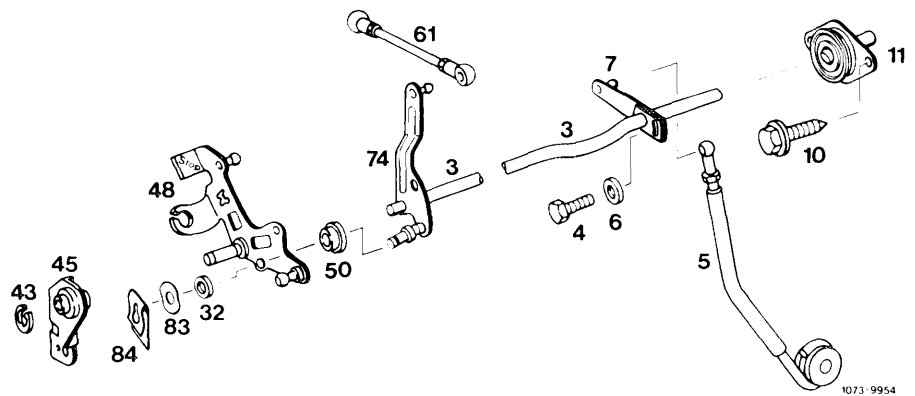
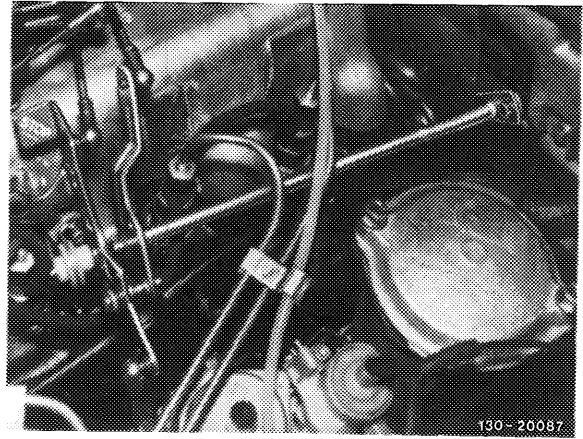
Installation

- 3 For installation proceed vice versa. Grease bearing points as well as ball sockets of regulation with Molykote Longterm 2.
- 4 Adjust throttle linkage (30–300).

C. Model 126.120

Removal

- 1 Disconnect regulating rods (5 and 61).
- 2 Remove lock (84), corrugated washer (83) and plastic spacing ring (32).
- 3 Push longitudinal regulating shaft (3) to the rear and remove.



Installation

- 4 For installation proceed vice versa. Grease bearing points as well as ball sockets of regulation with Molykote Longterm 2.
- 5 Adjust throttle linkage (30–300).