

Data

Model	Torsion bar		Rubber mount of torsion bar bearing	
	Part no.	Diameter	Part no.	Bore dia.
107	107 323 01 65	25	114 323 05 85	23.5–0.5
114	115 323 16 65 ¹⁾			
115	107 323 01 65 ²⁾			

¹⁾ 1st version (up to February 1972). ²⁾ 2nd version (starting March 1972).

Torsion bar connecting linkage on front axle

Part no.	Rubber buffer		Spacing tube Length	Length	Hex bolt	
	Height				Length without threads	
115 323 02 44	20		100	210	178–1.5	

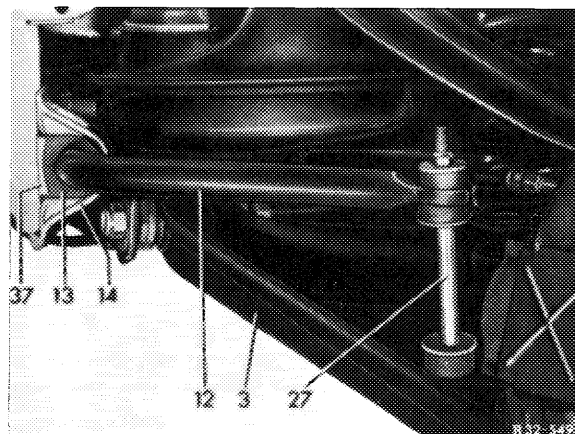
Tightening torque

	Nm	(kpm)
Hex bolts of torsion bar bearing	20–25	(2–2.5)

Removal

- 1 Loosen connecting linkage (27) at left and right on lower control arm.
- 2 Unscrew holding clamp (14) of torsion bar bearing left and right and remove torsion bar (12).

- | | |
|---------------------------------|-----------------------------------|
| 3 Lower control arm | 27 Torsion bar connecting linkage |
| 12 Torsion bar | 37 Locking plate |
| 13 Rubber mount for torsion bar | |
| 14 Holding clamp | |



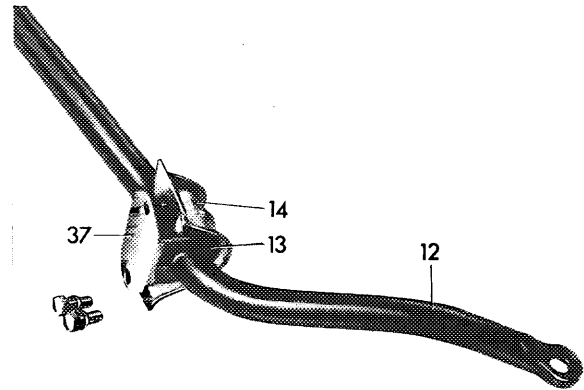
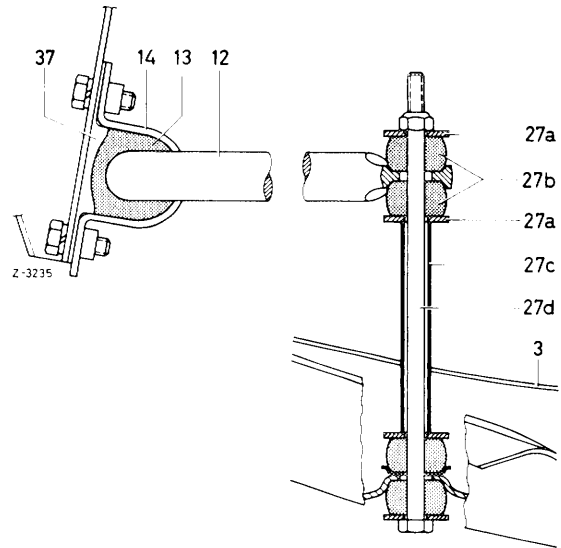
Installation

3 Check rubber mount of torsion bar bearing and rubber rings of connecting linkage.

- | | |
|-----------------------|------------------|
| 3 Lower control arm | 27a Washer |
| 12 Torsion bar | 27b Rubber ring |
| 13 Rubber mount | 27c Spacing tube |
| 14 Holding bracket | 27d Hex bolt |
| 27 Connecting linkage | 37 Locking plate |

4 Slide rubber mount on torsion bar with parting slot toward front, fit locking plate (37) and attach torsion bar bearing to frame floor. Align torsion bar prior to tightening hex bolts.

- | | |
|-----------------|--------------------|
| 12 Torsion bar | 14 Holding bracket |
| 13 Rubber mount | 37 Locking plate |



R-3646

Note: Insufficiently tightened hex bolts of the holding bracket may result in knocking noises when driving on winding roads.

5 Attach torsion bar connecting linkage left and right to lower control arm. Tighten hex nut up to end of thread.

- | | |
|-----------------------|------------------|
| 3 Lower control arm | 27a Washer |
| 12 Torsion bar | 27b Rubber ring |
| 13 Rubber mount | 27c Spacing tube |
| 14 Holding bracket | 27d Hex bolt |
| 27 Connecting linkage | 37 Locking plate |

