

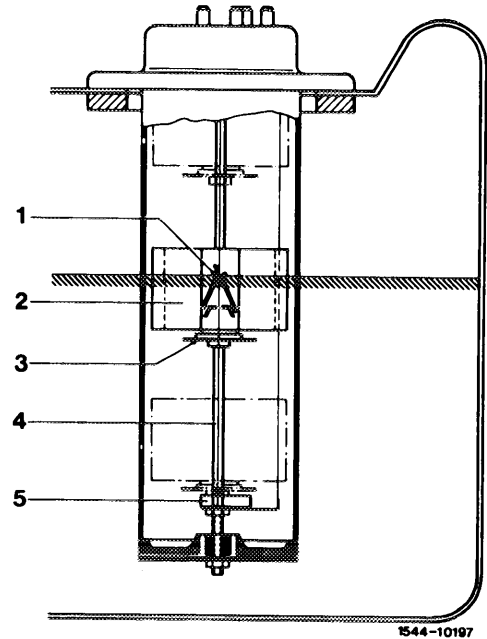
Electrical operation

Under influence of decreasing fuel level the sliding contact (1) on float (2) of immersion tube transmitter will increase the resistance value, the current will decrease and the indicator needle in instrument will then fall back.

If the fuel level drops still further, the reserve warning contact (5) in immersion tube transmitter, which connects to reserve warning lamp ground, is closed.

Immersion tube transmitter

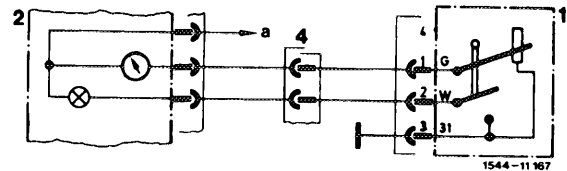
- 1 Sliding contact
- 2 Float
- 3 Contact plate
- 4 Guide and contact rod
- 5 Reserve warning contact



Up to August 1982

- 1 Immersion tube transmitter
- 2 Fuel indicating instrument
- 4 Plug connection tail lamp harness

a Fuse terminal 15



The circuit has been changed starting September 1982. With the ignition switched on, the reserve warning lamp will light up (checkup function). As soon as the engine is running, the lamp will go out, provided the fuel tank holds more fuel than reserve.

Note: During control function, the reserve warning lamp lights up weaker, with reserve stronger.

Starting September 1982

- 1 Immersion tube transmitter
- 2 Fuel indicating instrument
- 4 Plug connection tail lamp harness

a Fuse terminal 15

b D+ terminal 61

