

Electrical system, body

Model 107

Outside heated rear view mirrors

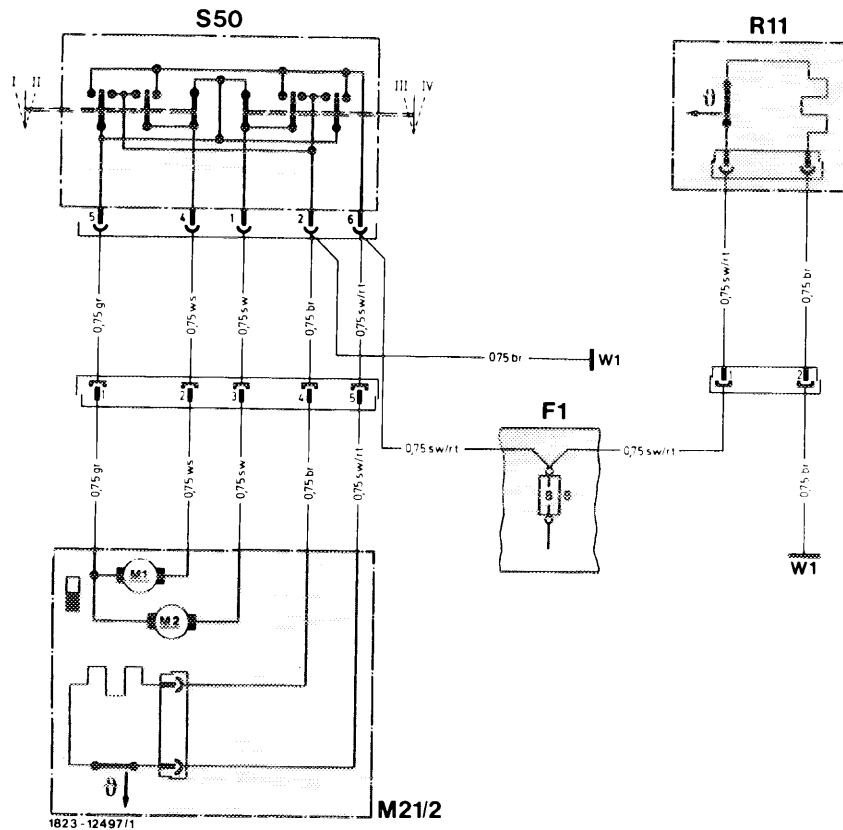


Fig. 82/1 Wiring diagram for outside heated rear view mirror

- | | | | |
|--------|--|------|--|
| F 1 | Fuse box, fuse no. 8 (circuit 15) | S 50 | Switch for electric mirror adjustment |
| M 21/2 | Electrically adjustable and heated outside rear view mirror, right | I | Vertical-up adjustment |
| R 11 | Heated outside rear view mirror, left | II | Vertical-down adjustment |
| | | III | Horizontal-outward adjustment |
| | | IV | Horizontal-outward adjustment |
| | | W 1 | Main ground (under instrument panel, right, at fuse box) |

High mounted stop lamp

A third, high mounted, stop lamp is located in the center of the trunk lid. It operates parallel to the other stop lamps and is connected to socket 11 of the exterior lamp failure monitoring unit. To exchange bulbs, unbolt and remove from the trunk lid; then remove the bottom rubber gasket.

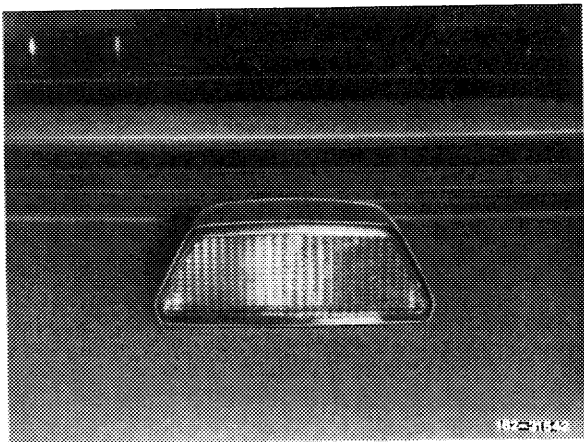
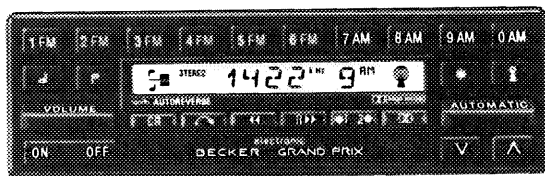


Fig. 82/2

Radio



182-30968

Fig. 82/13

The new Grand Prix radio for model year 1986 contains the following new features:

- Larger display indicator with tone setting and tuning sensitivity.

- Manually selectable sensitivity (3 levels) for automatic station seeker.
- Switched off, radio returns to "least sensitive"
- AM-Stereo (Motorola system)
- Individual buttons for manual tuning
- AM tuning in 10 kHz increments.
- DOLBY B¹⁾ noise reduction button and tape selector for CrO₂ cassettes.
- Power output increased to 20 watts per channel.

¹⁾ Registered trademark of Dolby Laboratories Licensing Corporation.

Note:

The radio can now also be turned-on in steering lock position 0.

Cassette Deck Cleaning

To maintain the proper function and good sound quality of the cassette player, tape head cleaning is required during each Maintenance Service 24000 km (15000 miles) using Cassette Deck Cleaning System 903 589 00 68 00. Refer to the maintenance manual for details.

If the cassette player is used daily more frequent cleaning may be required.

Radio anti-theft protection



182-30969

Fig. 82/14 Theft indication display (dashed line)