

## 83–542 Removal, installation and checking of temperature vacuum switch or switch for air conditioning system as well as ETR switch

---

### A. Adjusting or removing and installing temperature vacuum switch for air conditioning system, lefthand steering up to 08/81 and righthand steering

#### Data

---

Cut-in temperature °C	+ 4.5 ± 1	completely cold
	+ 16 ± 2	minimum cold
Difference between cut-in and cut-out temperature in rotary range	3.5 ± 1	
Angle of rotation °	315 ± 5	

---

#### Note

---

During function test (83–510) of air conditioning system the air outlet temperature should not drop below 1 °C. A prerequisite is that the capillary of the temperature vacuum switch is slipped into guide tube up to mark, that the fluid level of the system is in order and that the required pressures at suction and pressure end of compressor have been attained. If the measured temperature is beyond the specified values (83–510), the temperature switch must be again regulated.

The function of the lamp in button of temperature switch has been changed from cut-in indicator lamp to lamp (terminal 58). The lamp is energized with the ignition switched on via the blower pre-resistors and is interrupted by a switch in housing of temperature switch (83–508).

The switch in housing has been removed, the energy is supplied via terminal 58 lamp (83–508).

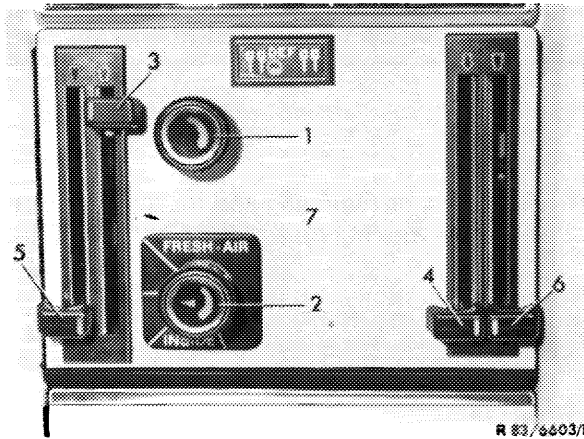
If a temperature switch housing of the new version is installed instead of the old version, the voltage feed must be changed. For this purpose, remove electric line (grey) in two-way plug and insulate. Make new electric line. (Length approx. 30 mm, 1 sleeve and 1 cable shoe 4 mm). Connect sleeve in two-way plug and cable shoe to cable connector terminal 58 (58–508).

## Adjustment

- 1 Unscrew rosette with knob from temperature vacuum switch (2).
- 2 Remove cover for control switch (68-200).

### Layout of temperature vacuum switch

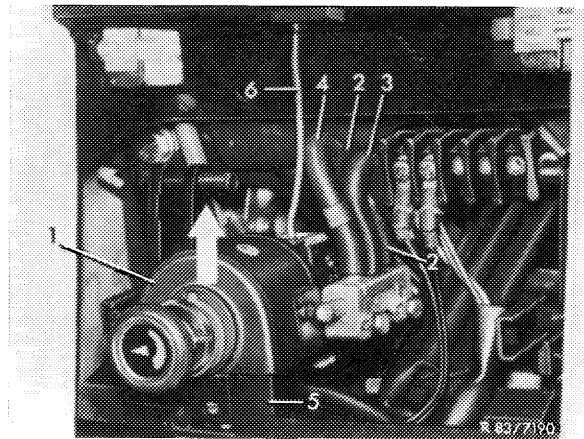
- 1 Blower switch
- 2 Temperature vacuum switch
- 7 Cover



R 83/6603/1

- 3 Lift temperature vacuum switch in upward direction from holder (5).

- 1 Temperature vacuum switch
- 2 Hose line (identification white)
- 3 Hose line (without identification)
- 4 Hose line (identification green)
- 5 Holder for temperature vacuum switch
- 6 Capillary

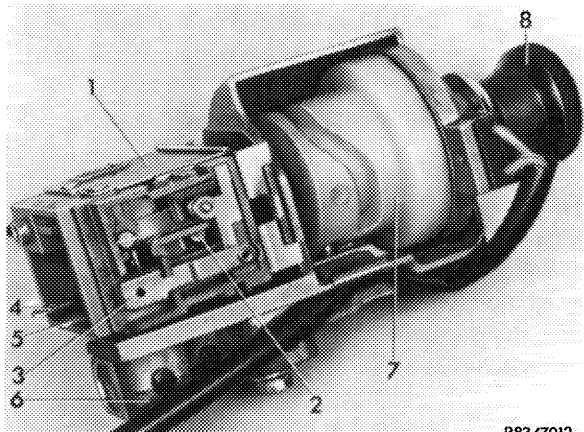


R 83/7190

- 4 Remove closing cover from temperature switch (1).

### Temperature vacuum switch

- 1 Temperature switch
- 2 Temperature adjusting screw (to the left "colder")
- 3 Terminal 4
- 4 Terminal 2
- 5 Terminal 1
- 6 Vacuum switch
- 7 Drum for control in vacuum switch
- 8 Knob with rosette



R83/7012

- 5 Adjust temperature switch (1) by turning adjusting screw (2). One full turn corresponds to approx. 2° C. Then slide back closing cover on temperature switch.

6 Plug temperature vacuum switch (1) on holder (5) or on vehicles without holder (5) screw with knob and rosette (8) to cover (7).

7 Reinstall cover (7).

8 On vehicles without holder (5), attach temperature vacuum switch (1) to cover (7) first.

9 On vehicles with holder (5) screw knob and rosette (8) through cover (7) in temperature vacuum switch.

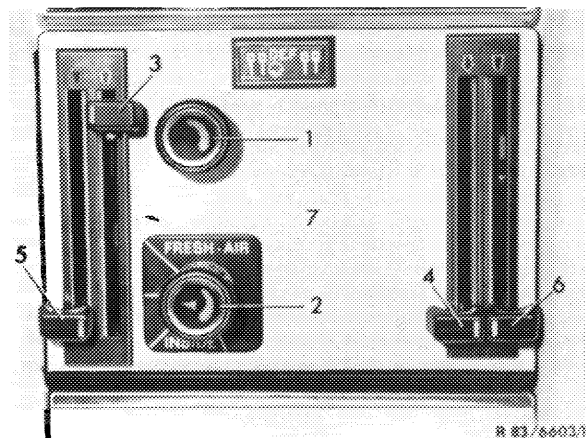
## Removal

10 Unscrew rosette with knob from temperature vacuum switch (2).

11 Remove cover (7) (68–200).

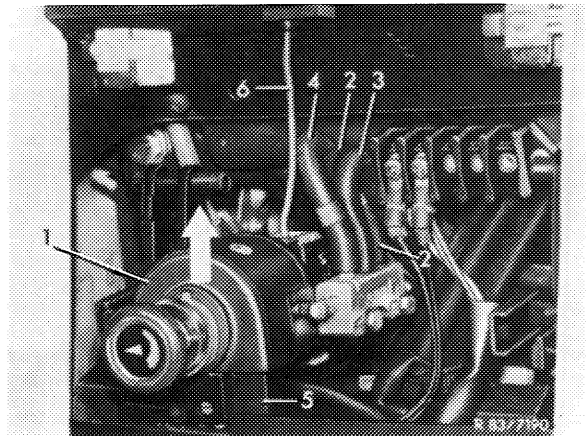
Layout temperature vacuum switch

- 1 Blower switch
- 2 Temperature vacuum switch
- 7 Cover



12 Lift temperature vacuum switch (1) in direction of arrow upwards from holder (5).

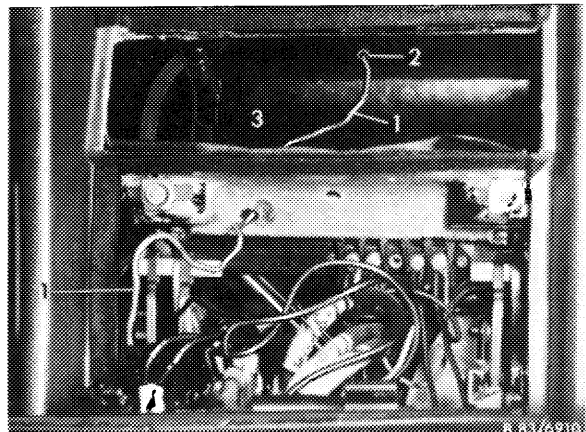
- 1 Temperature vacuum switch
- 2 Hose line (identification white)
- 3 Hose line (without identification)
- 4 Hose line (identification green)
- 5 Holder for temperature vacuum switch
- 6 Capillary



13 Pull capillary (1) with temperature sensor out of air conditioner unit (3). Pull off the three flat plugs on temperature switch and also loosen two-way plug connection.

Layout capillary with temperature sensor

- 1 Capillary
- 2 Guide tube
- 3 Air conditioner unit



14 Pull hose lines (2 to 4) from vacuum switch.

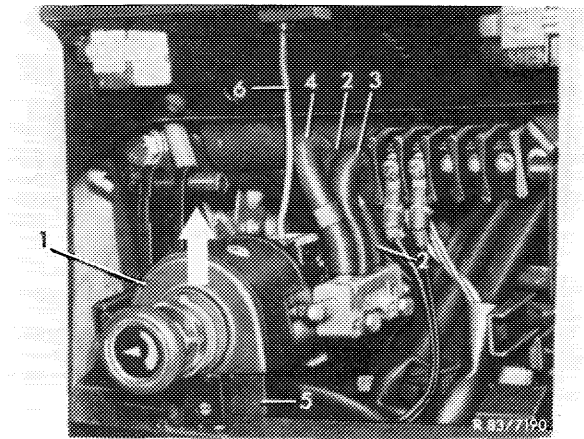
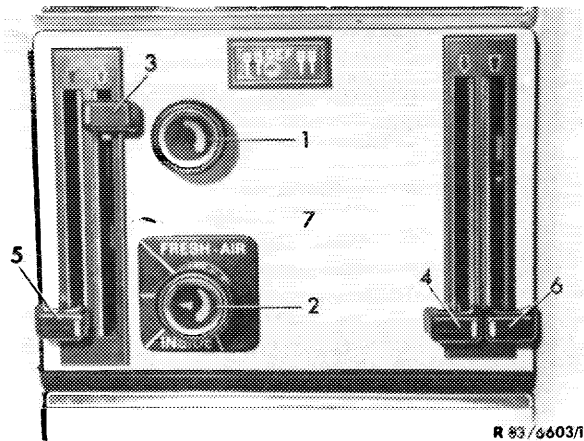
**Note:** If the hose lines are not identified (white or green adhesive tape), mark hose lines according to color code on vacuum switch prior to pulling off.

### Installation

15 Plug temperature vacuum switch (1) on holder (5) or on vehicles without holder (5) screw with knob and rosette (8) to cover (7).

Layout temperature vacuum switch

- 1 Blower switch
- 2 Temperature vacuum switch
- 7 Cover



- 1 Temperature vacuum switch
- 2 Hose line (identification white)
- 3 Hose line (without identification)
- 4 Hose line (identification green)
- 5 Holder for temperature vacuum switch
- 6 Capillary

Temperature vacuum switch

- 1 Temperature switch
- 2 Temperature adjusting screw (to the left "colder")
- 3 Terminal 4
- 4 Terminal 2
- 5 Terminal 1
- 6 Vacuum switch
- 7 Drum for controlling vacuum switch
- 8 Knob with rosette

