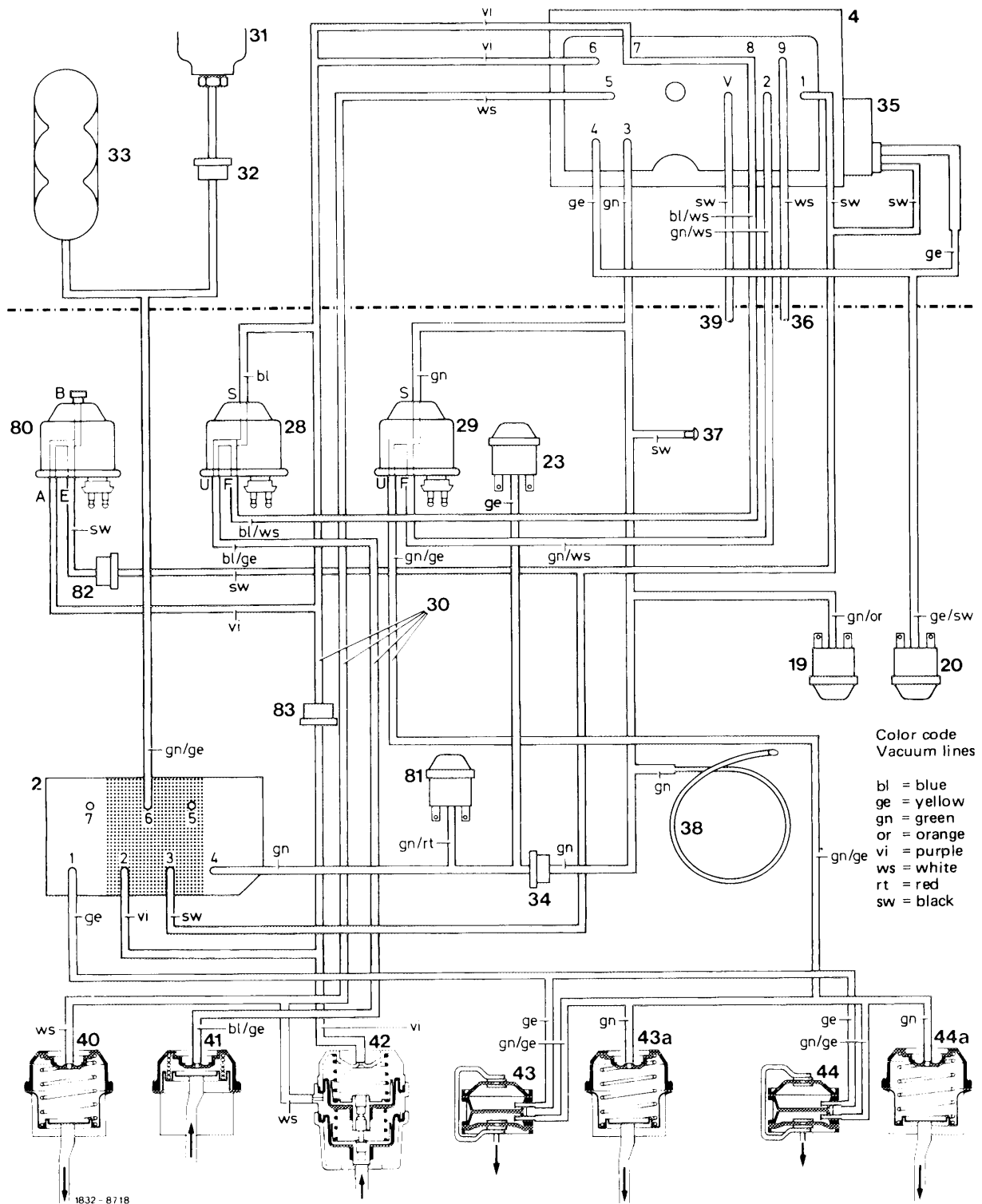


1832 - 8715

Function diagram 1 Pushbutton switch in "OFF", "ON/OFF" switch refrigerant compressor at "ON"

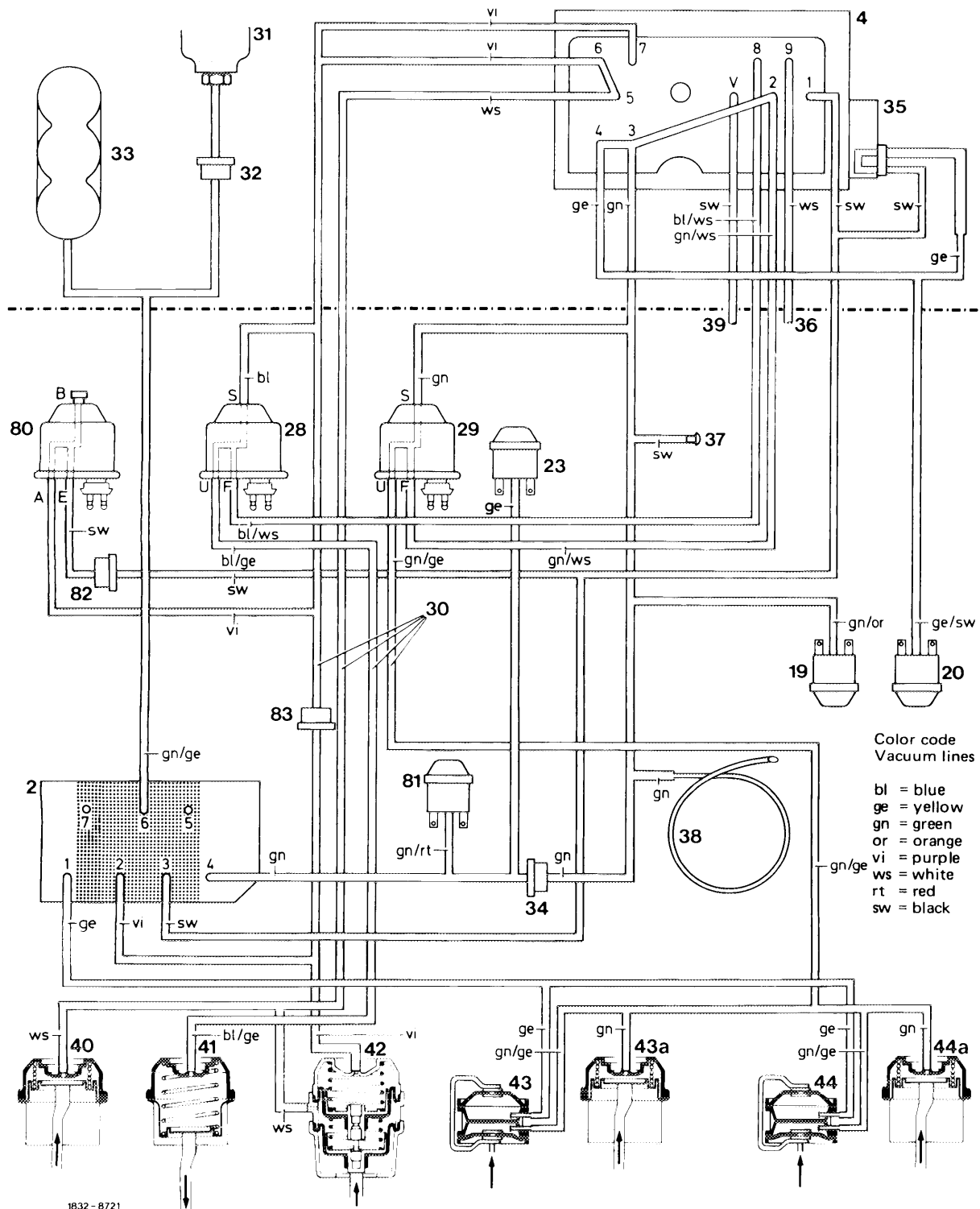
- | | | |
|---|---|--|
| <p>2 Pushbutton switch
4 Regulating valve
19 Vacuum switch
(main switch, green)
20 Vacuum switch
(refrigerant compressor, yellow)
23 Vacuum switch (for refrigerant
compressor, at "BI-LEVEL" only)
28 Switchover valve (legroom flaps)
29 Switchover valve (fresh air-
recirculating air changeover switch)
30 Vacuum lines
31 Vacuum connection at intake pipe
32 Check valve</p> | <p>33 Vacuum reservoir
34 Check valve
35 Temperature switch
36 Vent line for legroom flaps
37 Vacuum connection for tester
38 Specified leak point
39 Vent line for regulating valve
40 Vacuum element for center jets
(flap "open")
41 Vacuum element for legroom flaps
(flaps "closed")
42 2-stage vacuum element for defroster
jets (flaps "closed")</p> | <p>43 Vacuum element for main air flap
left (flap "closed" no fresh air feed)
43a Single-acting vacuum element for
main air flap left
44 Vacuum element for main air flap
right (flap "closed" no fresh air feed)
44a Single-acting vacuum element for
main air flap right
80 Switchover valve "BI-LEVEL"
(at "DEF")
81 Vacuum switch
(at "BI-LEVEL" only)
82 Check valve
83 Check valve</p> |
|---|---|--|



Function diagram 1 a

Pushbutton switch at "AUTO-LO" or "AUTO-HI", "ON/OFF" switch refrigerant compressor at "ON"
Regulating valve in position "heating", coolant temperature $< 40^{\circ}\text{C}$ ($< 104^{\circ}\text{F}$)

- | | | |
|---|---|---|
| 2 Pushbutton switch | 33 Vacuum reservoir | 43 Vacuum element for main air flap left (flap "closed" no fresh air feed) |
| 4 Regulating valve | 34 Check valve | 43a Single-acting vacuum element for main air flap left |
| 19 Vacuum switch (main switch, green) | 35 Temperature switch | 44 Vacuum element for main air flap right (flap "closed" no fresh air feed) |
| 20 Vacuum switch (refrigerant compressor, yellow) | 36 Vent line for legroom flaps | 44a Single-acting vacuum element for main air flap right |
| 23 Vacuum switch (for refrigerant compressor, at "BI-LEVEL" only) | 37 Vacuum connection for tester | 80 Switchover valve "BI-LEVEL" (at "DEF") |
| 28 Switchover valve (legroom flaps) | 38 Specified leak point | 81 Vacuum switch (at "BI-LEVEL" only) |
| 29 Switchover valve (fresh air-recirculating air changeover switch) | 39 Vent line for regulating valve | 82 Check valve |
| 30 Vacuum lines | 40 Vacuum element for center jets (flap "closed") | 83 Check valve |
| 31 Vacuum connection at intake pipe | 41 Vacuum element for legroom flaps (flaps "open") | |
| 32 Check valve | 42 2-stage vacuum element for defroster jets (flaps "closed" with leak air portion) | |

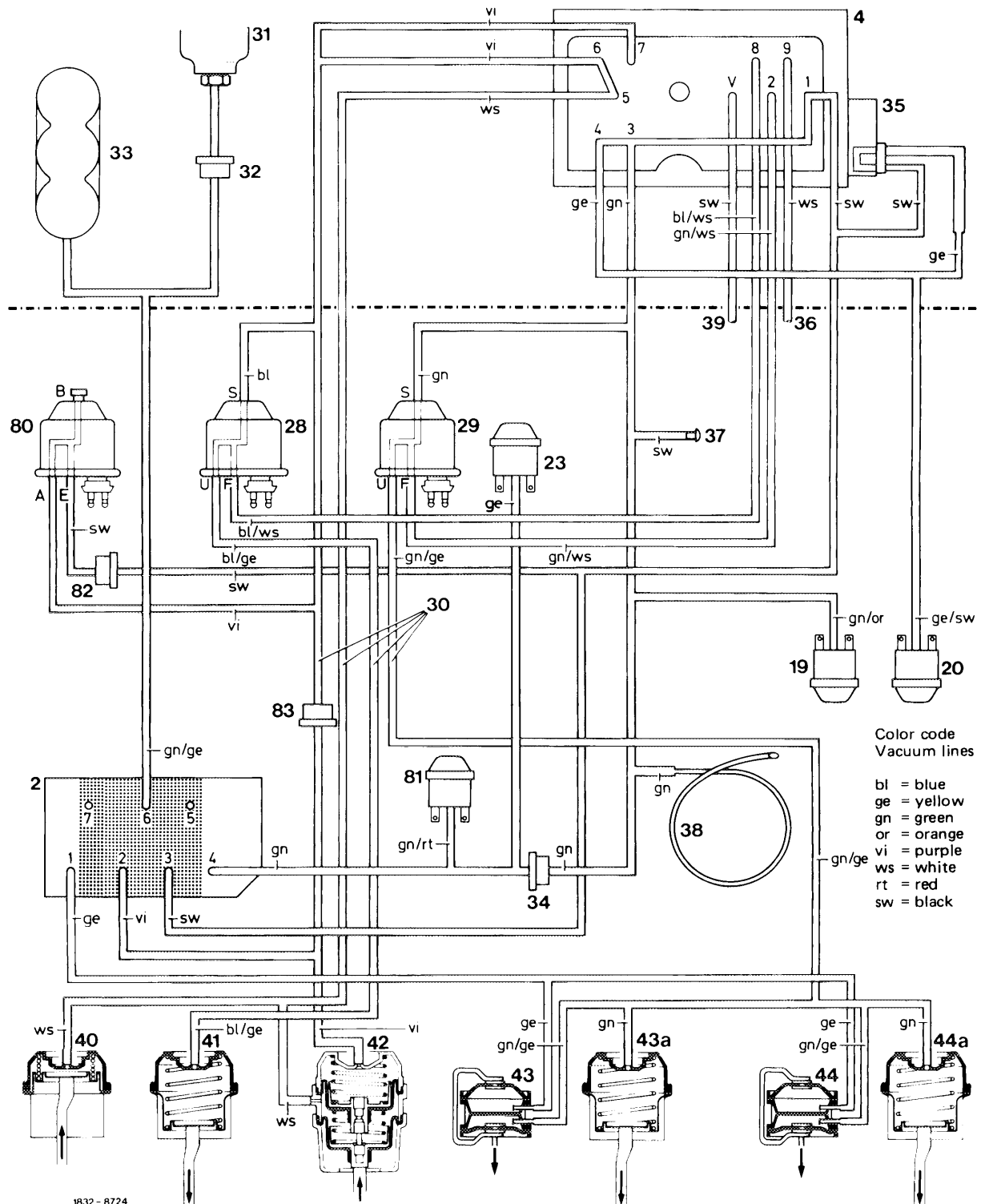


Function diagram 2

Pushbutton switch at "AUTO-LO" or "AUTO-HI", "ON/OFF" switch refrigerant compressor at "ON"

Regulating valve in position "cooling" (fresh air), coolant temperature > 40 °C (> 104 °F)

- | | | |
|---|---|--|
| 2 Pushbutton switch | 33 Vacuum reservoir | 43 Vacuum element for main air flap left (flap "open") |
| 4 Regulating valve | 34 Check valve | 43a Single-acting vacuum element for main air flap left |
| 19 Vacuum switch (main switch, green) | 35 Temperature switch | 44 Vacuum element for main air flap right (flap "open") |
| 20 Vacuum switch (refrigerant compressor, yellow) | 36 Vent line for legroom flaps | 44a Single-acting vacuum element for main air flap right |
| 23 Vacuum switch (for refrigerant compressor, at "BI-LEVEL" only) | 37 Vacuum connection for tester | 80 Switchover valve "BI-LEVEL" (at "DEF") |
| 28 Switchover valve (legroom flaps) | 38 Specified leak point | 81 Vacuum switch (at "BI-LEVEL" only) |
| 29 Switchover valve (fresh air-recirculating air changeover switch) | 39 Vent line for regulating valve | 82 Check valve |
| 30 Vacuum lines | 40 Vacuum element for center jets (flap "open") | 83 Check valve |
| 31 Vacuum connection at intake pipe | 41 Vacuum element for legroom flaps (flaps "closed") | |
| 32 Check valve | 42 2-stage vacuum element for defroster jets (flaps "closed") | |

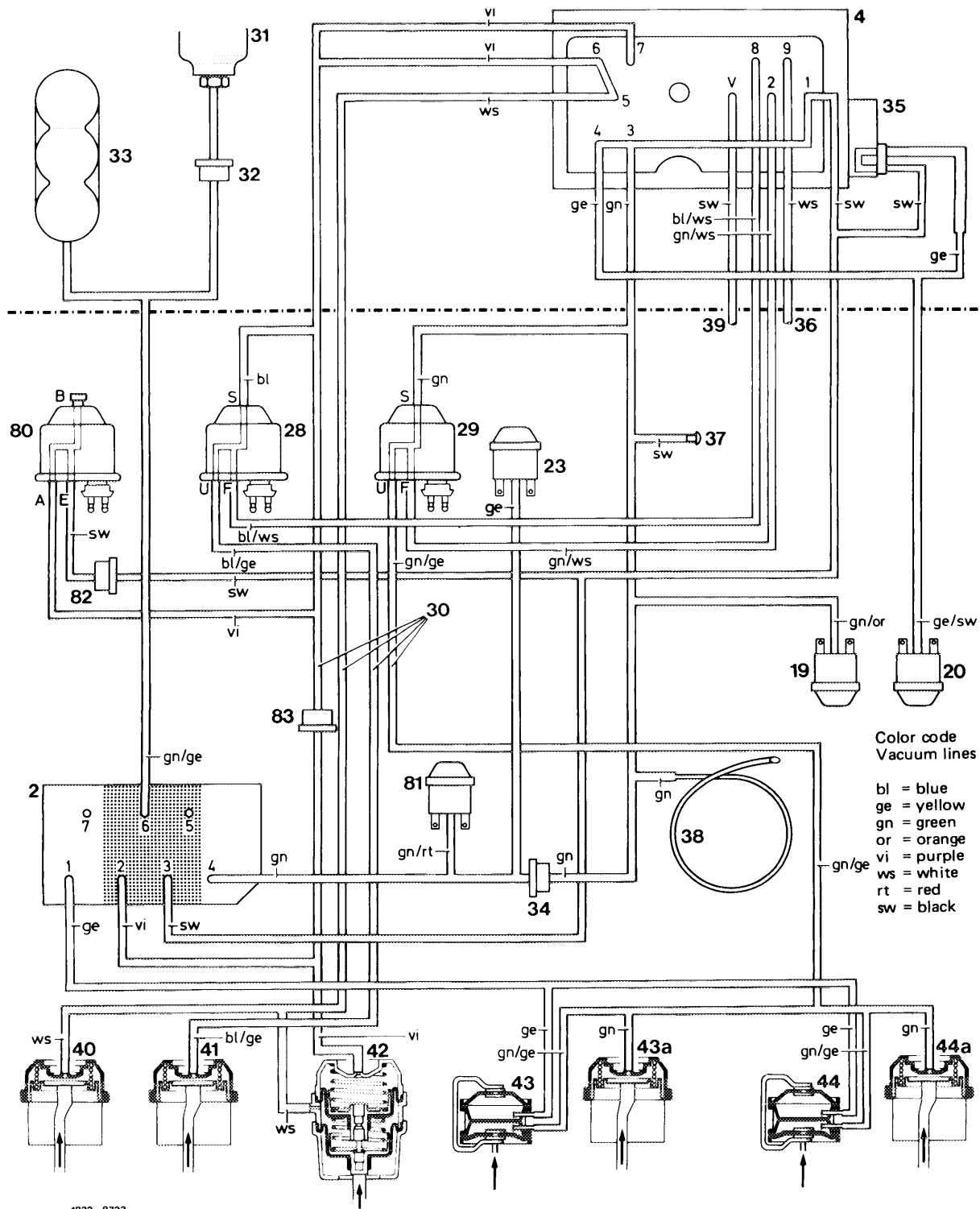


1832 - 8724

Function diagram 3

Pushbutton switch at "AUTO-LO" or "AUTO-HI", "ON/OFF" switch refrigerant compressor at "ON"
Regulating valve in position max. "cooling" (ambient air), coolant temperature > 40 °C (> 104 °F)

- | | | |
|---|---|---|
| 2 Pushbutton switch | 33 Vacuum reservoir | 43 Vacuum element for main air flap left (flap "closed") |
| 4 Regulating valve | 34 Check valve | 43a Single-acting vacuum element for main air flap left |
| 19 Vacuum switch (main switch, green) | 35 Temperature switch | 44 Vacuum element for main air flap right (flap "closed") |
| 20 Vacuum switch (refrigerant compressor, yellow) | 36 Vent line for legroom flaps | 44a Single-acting vacuum element for main air flap right |
| 23 Vacuum switch (for refrigerant compressor, at "BI-LEVEL" only) | 37 Vacuum connection for tester | 80 Switchover valve "BI-LEVEL" (at "DEF") |
| 28 Switchover valve (legroom flaps) | 38 Specified leak point | 81 Vacuum switch (at "BI-LEVEL" only) |
| 29 Switchover valve (fresh air-recirculating air changeover switch) | 39 Vent line for regulating valve | 82 Check valve |
| 30 Vacuum lines | 40 Vacuum element for center jets (flap "open") | 83 Check valve |
| 31 Vacuum connection at intake pipe | 41 Vacuum element for legroom flaps (flaps "closed") | |
| 32 Check valve | 42 Vacuum element for defroster jets (flaps "closed") | |



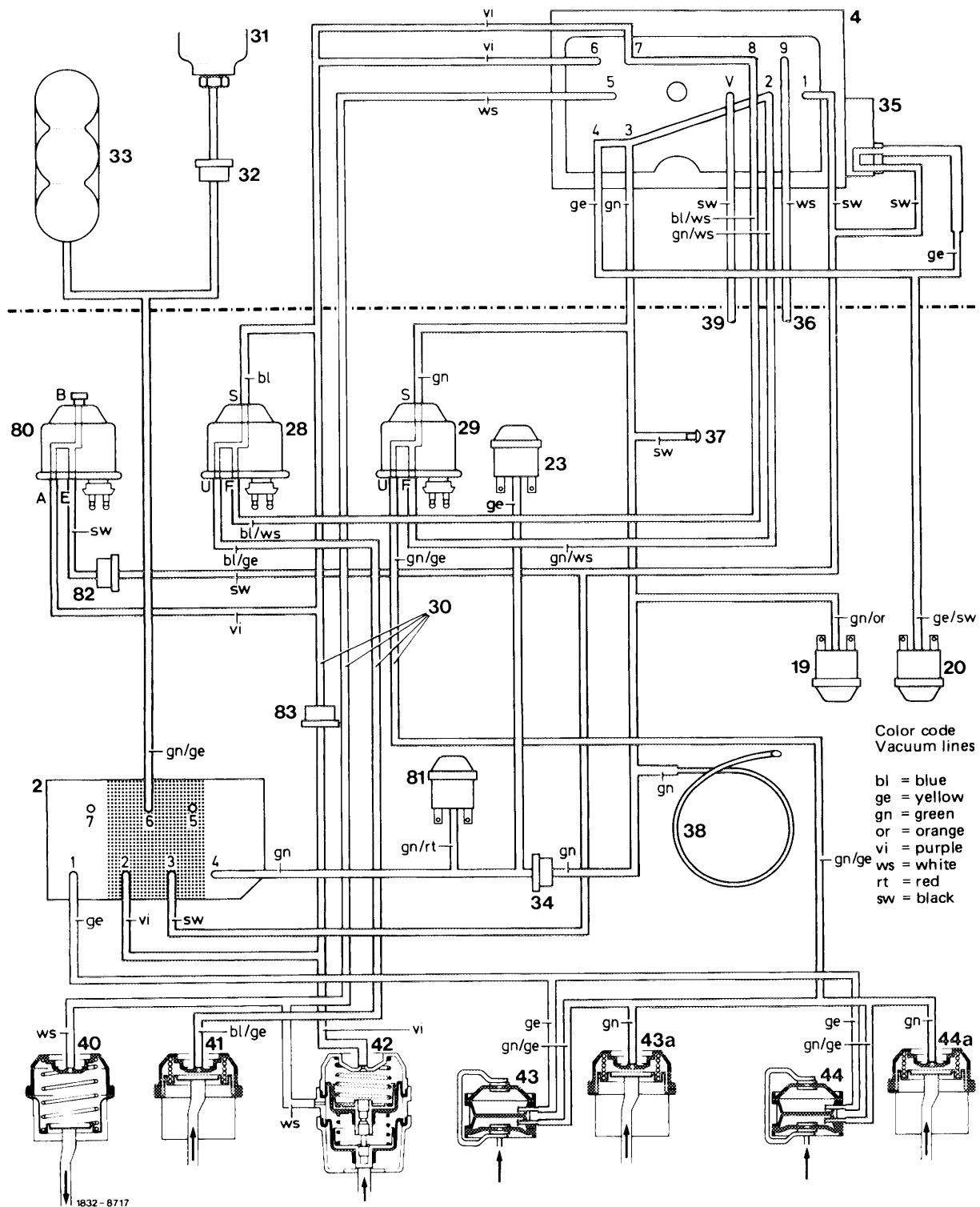
1832-8723

Function diagram 4

Pushbutton switch at "AUTO-LO" or "AUTO-HI", "ON/OFF" switch refrigerant compressor at "OFF"

Regulating valve in position max. "cooling" (fresh air), coolant temperature $> 40^{\circ}\text{C}$ ($> 104^{\circ}\text{F}$)

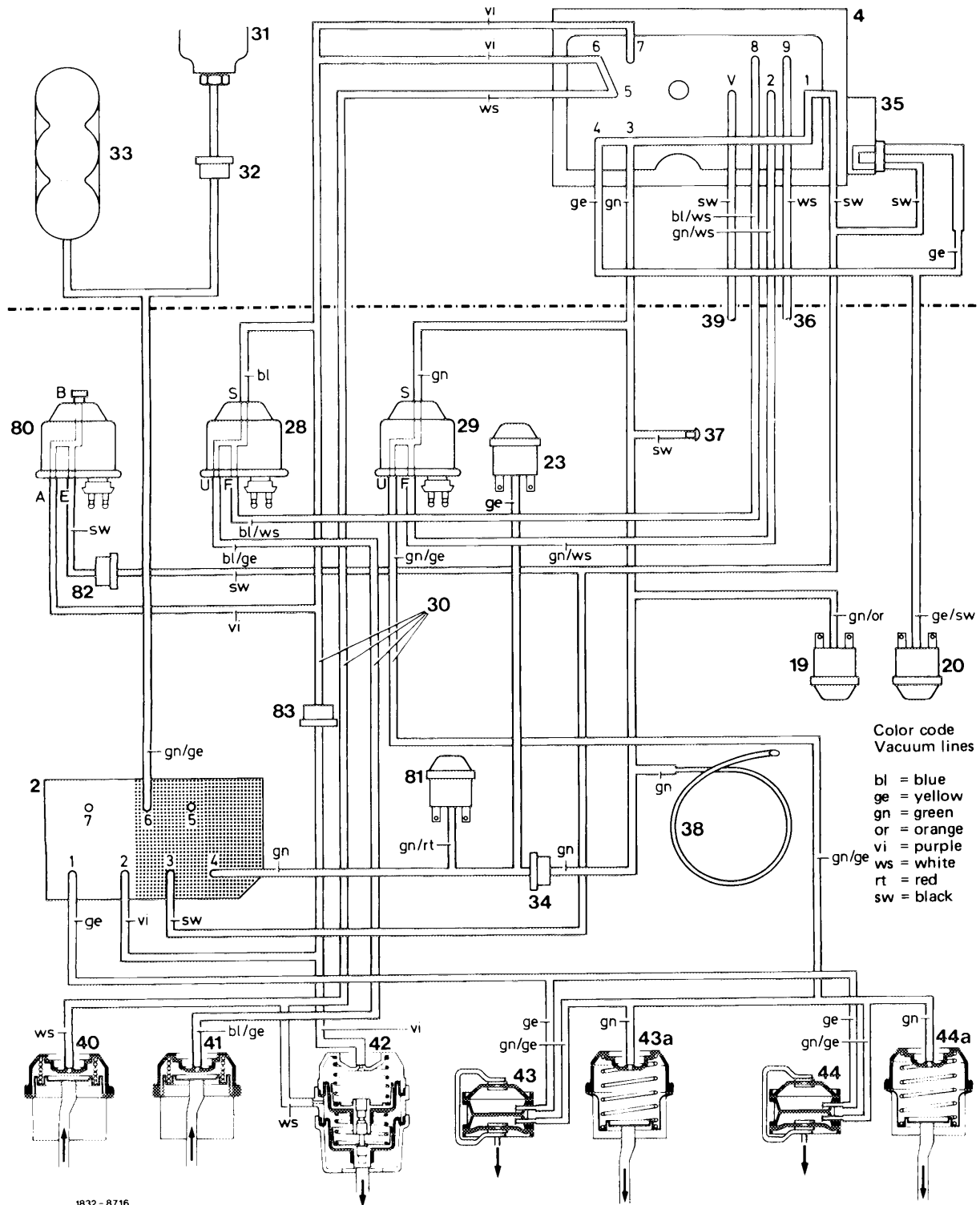
- | | | |
|---|---|--|
| 2 Pushbutton switch | 33 Vacuum reservoir | 43 Vacuum element for main air flap left (flap "open") |
| 4 Regulating valve | 34 Check valve | 43a Single-acting vacuum element for main air flap left |
| 19 Vacuum switch (main switch, green) | 35 Temperature switch | 44 Vacuum element for main air flap right (flap "open") |
| 20 Vacuum switch (refrigerant compressor, yellow) | 36 Vent line for legroom flaps | 44a Single-acting vacuum element for main air flap right |
| 23 Vacuum switch (for refrigerant compressor, at "BI-LEVEL" only) | 37 Vacuum connection for tester | 80 Switchover valve "BI-LEVEL" (at "DEF") |
| 28 Switchover valve (legroom flaps) | 38 Specified leak point | 81 Vacuum switch (at "BI-LEVEL" only) |
| 29 Switchover valve (fresh air-recirculating air changeover switch) | 39 Vent line for regulating valve | 82 Check valve |
| 30 Vacuum lines | 40 Vacuum element for center jets (flap "open") | 83 Check valve |
| 31 Vacuum connection at intake pipe | 41 Vacuum element for legroom flaps (flaps "closed") | |
| 32 Check valve | 42 Vacuum element for defroster jets (flaps "closed") | |



Function diagram 5

Pushbutton switch at "AUTO-LO" or "AUTO-HI", "ON/OFF" switch refrigerant compressor at "ON"
Regulating valve in position "heating", coolant temperature $> 40\text{ }^{\circ}\text{C}$ ($> 104\text{ }^{\circ}\text{F}$)

- | | | |
|---|---|--|
| 2 Pushbutton switch | 33 Vacuum reservoir | 43 Vacuum element for main air flap left (flap "open") |
| 4 Regulating valve | 34 Check valve | 43a Single-acting vacuum element for main air flap left |
| 19 Vacuum switch (main switch, green) | 35 Temperature switch | 44 Vacuum element for main air flap right (flap "open") |
| 20 Vacuum switch (refrigerant compressor, yellow) | 36 Vent line for legroom flaps | 44a Single-acting vacuum element for main air flap right |
| 23 Vacuum switch (for refrigerant compressor, at "BI-LEVEL" only) | 37 Vacuum connection for tester | 80 Switchover valve "BI-LEVEL" (at "DEF") |
| 28 Switchover valve (legroom flaps) | 38 Specified leak point | 81 Vacuum switch (at "BI-LEVEL" only) |
| 29 Switchover valve (fresh air-recirculating air changeover switch) | 39 Vent line for regulating valve | 82 Check valve |
| 30 Vacuum lines | 40 Vacuum element for center jets (flap "closed") | 83 Check valve |
| 31 Vacuum connection at intake pipe | 41 Vacuum element for legroom flaps (flaps "open") | |
| 32 Check valve | 42 2-stage vacuum element for defroster jets (flaps "closed" with leak air portion) | |

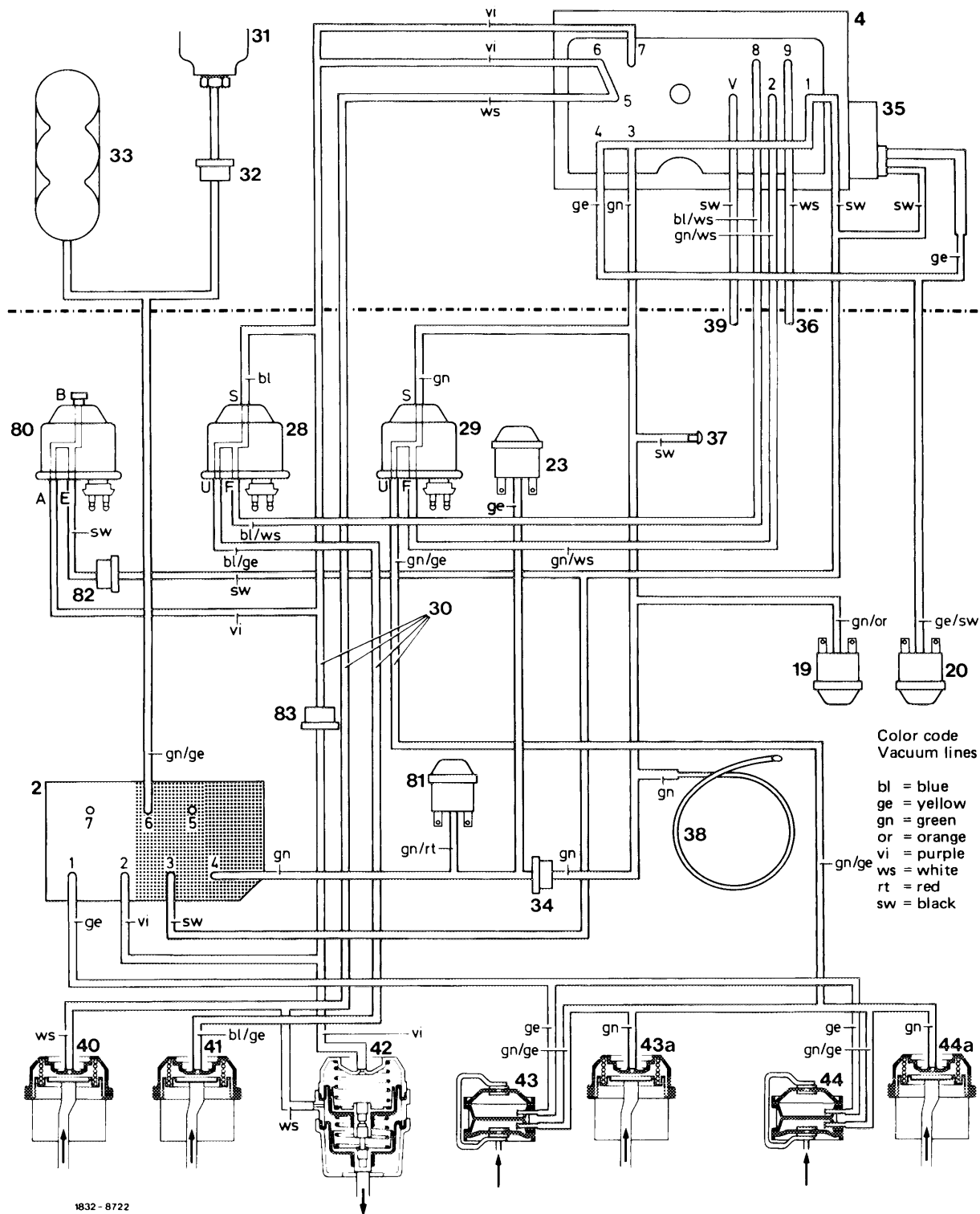


1832 - 8716

Function diagram 6

Pushbutton switch at "BI-LEVEL", "ON/OFF" switch refrigerant compressor at "ON", regulating valve in position max. "cooling" (ambient air), coolant temperature > 40 °C (> 104 °F) (temperature switch [35] without influence)

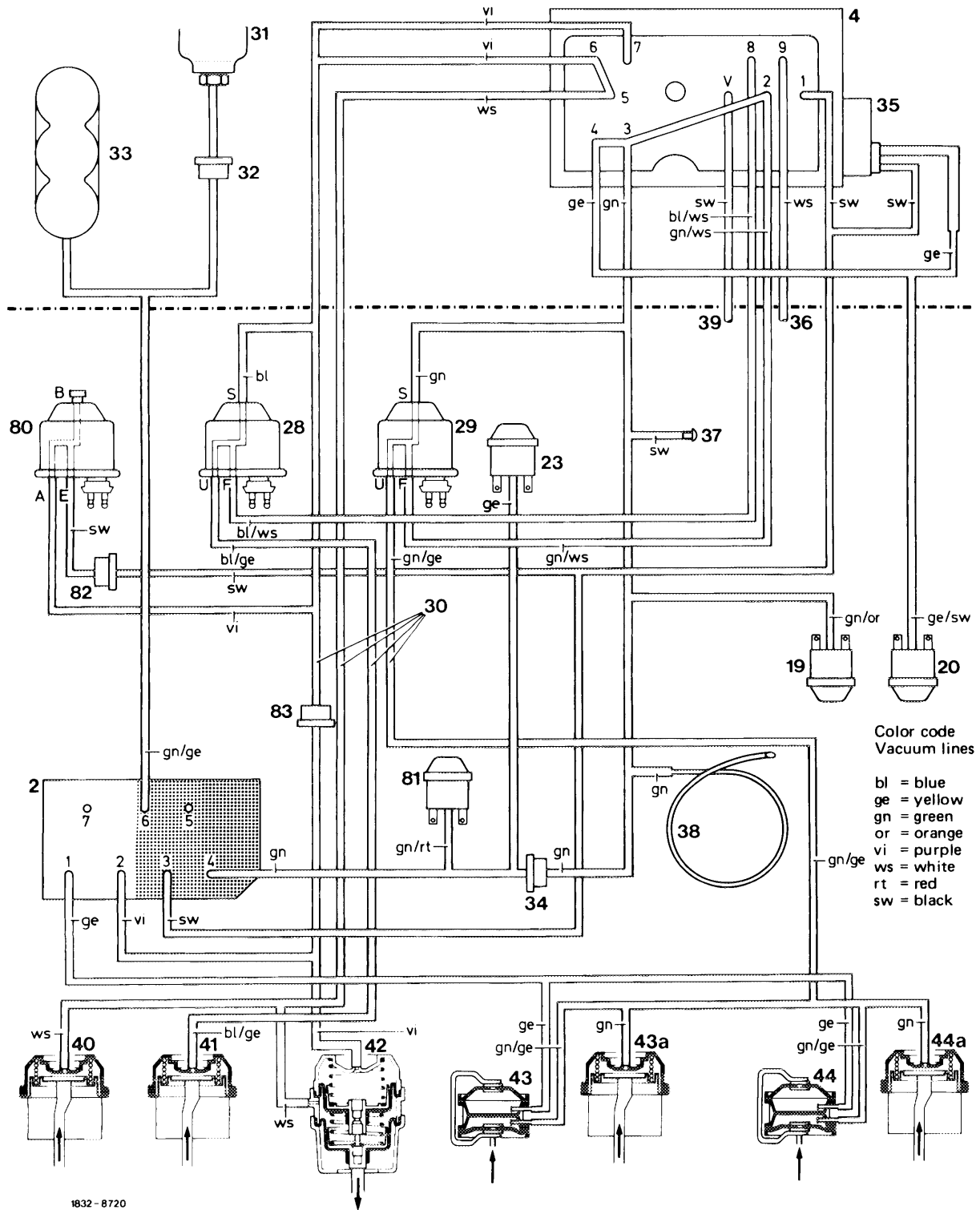
- | | | |
|---|---|--|
| 2 Pushbutton switch | 33 Vacuum reservoir | 43 Vacuum element for main air flap left (flap "open") |
| 4 Regulating valve | 34 Check valve | 43a Single-acting vacuum element for main air flap left |
| 19 Vacuum switch (main switch, green) | 35 Temperature switch | 44 Vacuum element for main air flap right (flap "open") |
| 20 Vacuum switch (refrigerant compressor, yellow) | 36 Vent line for legroom flaps | 44a Single-acting vacuum element for main air flap right |
| 23 Vacuum switch (for refrigerant compressor, at "BI-LEVEL" only) | 37 Vacuum connection for tester | 80 Switchover valve "BI-LEVEL" (at "DEF") |
| 28 Switchover valve (legroom flaps) | 38 Specified leak point | 81 Vacuum switch (at "BI-LEVEL" only) |
| 29 Switchover valve (fresh air-recirculating air changeover switch) | 39 Vent line for regulating valve | 82 Check valve |
| 30 Vacuum lines | 40 Vacuum element for center jets (flap "open") | 83 Check valve |
| 31 Vacuum connection at intake pipe | 41 Vacuum element for legroom flaps (flaps "open") | |
| 32 Check valve | 42 2-stage vacuum element for defroster jets (flaps "open") | |



1832 - 8722
Function diagram 7

Pushbutton switch at "BI-LEVEL", "ON/OFF" switch refrigerant compressor at "OFF", regulating valve in position max. "cooling" (fresh air), coolant temperature $> 40\text{ }^{\circ}\text{C}$ ($> 104\text{ }^{\circ}\text{F}$) (temperature switch [35] without influence)

- | | | |
|---|---|--|
| 2 Pushbutton switch | 33 Vacuum reservoir | 43 Vacuum element for main air flap left (flap "open") |
| 4 Regulating valve | 34 Check valve | 43a Single-acting vacuum element for main air flap left |
| 19 Vacuum switch (main switch, green) | 35 Temperature switch | 44 Vacuum element for main air flap right (flap "open") |
| 20 Vacuum switch (refrigerant compressor, yellow) | 36 Vent line for legroom flaps | 44a Single-acting vacuum element for main air flap right |
| 23 Vacuum switch (for refrigerant compressor, at "BI-LEVEL" only) | 37 Vacuum connection for tester | 80 Switchover valve "BI-LEVEL" (at "DEF") |
| 28 Switchover valve (legroom flaps) | 38 Specified leak point | 81 Vacuum switch (at "BI-LEVEL" only) |
| 29 Switchover valve (fresh air-recirculating air changeover switch) | 39 Vent line for regulating valve | 82 Check valve |
| 30 Vacuum lines | 40 Vacuum element for center jets (flap "open") | 83 Check valve |
| 31 Vacuum connection at intake pipe | 41 Vacuum element for legroom flaps (flaps "open") | |
| 32 Check valve | 42 2-stage vacuum element for defroster jets (flaps "open") | |

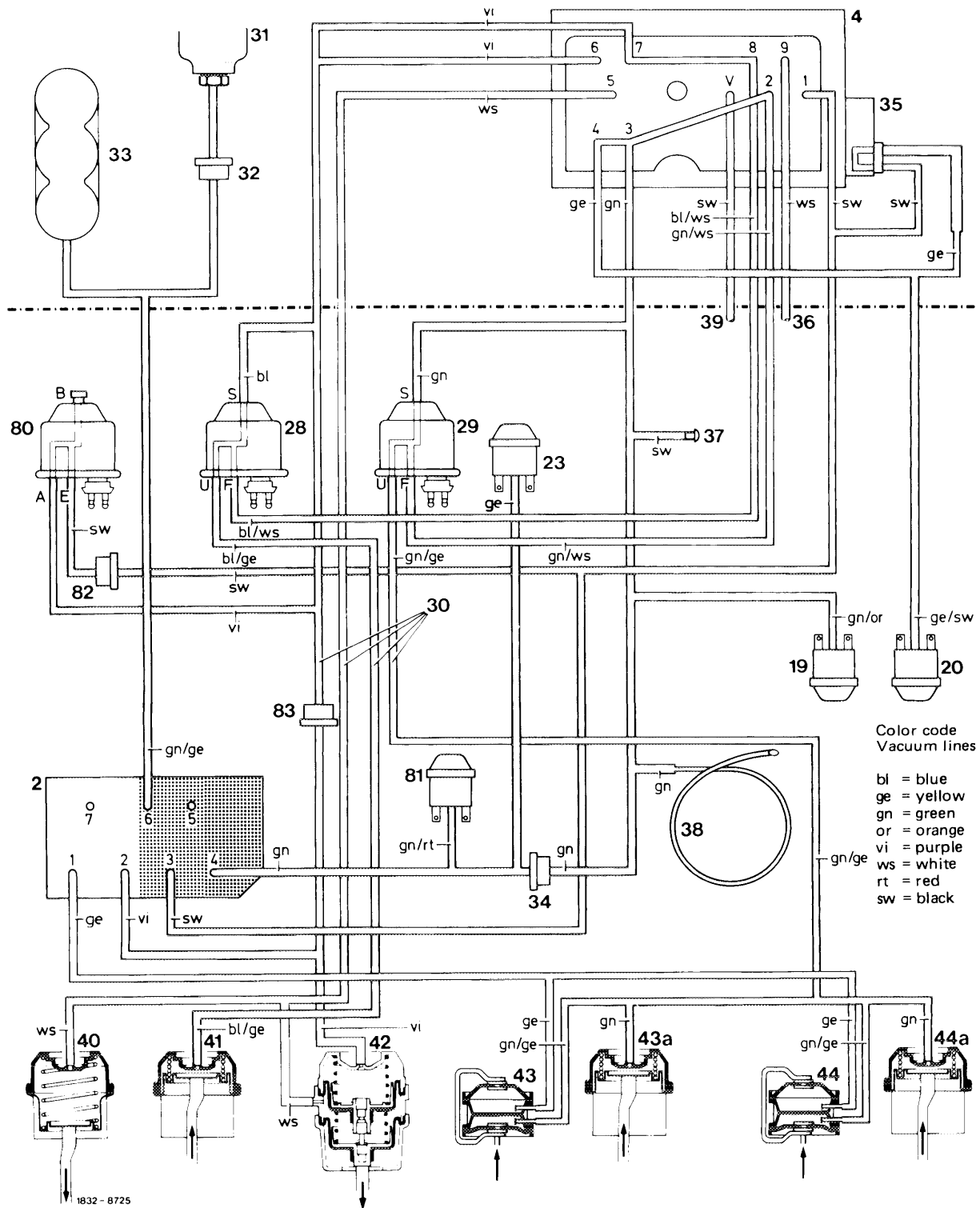


1832-8720

Function diagram 8

Pushbutton switch at "BI-LEVEL", "ON/OFF" switch refrigerant compressor at "ON", regulating valve in position "cooling", coolant temperature $> 40\text{ }^{\circ}\text{C}$ ($> 104\text{ }^{\circ}\text{F}$), (temperature switch [35] without influence)

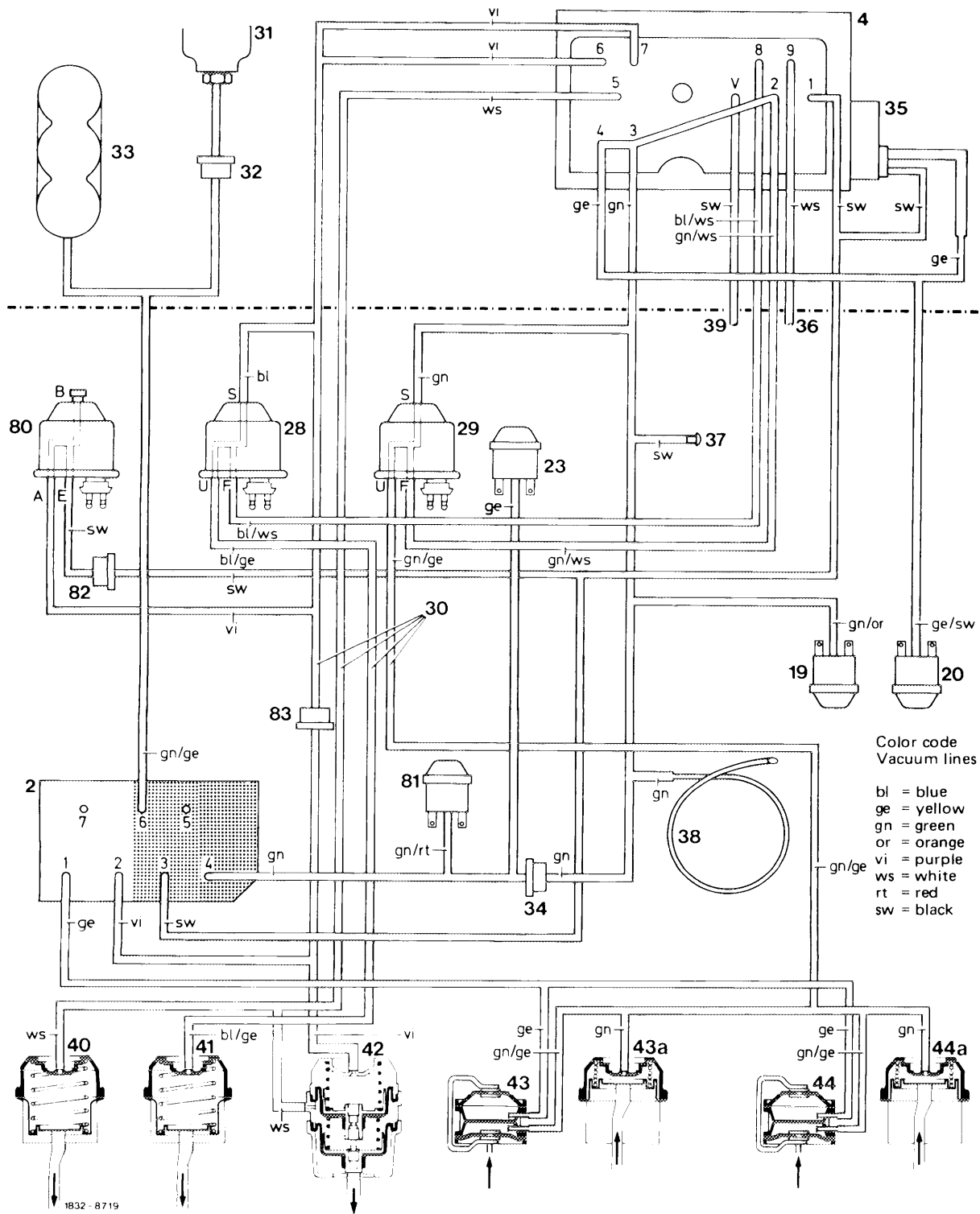
- | | | |
|---|---|--|
| 2 Pushbutton switch | 33 Vacuum reservoir | 43 Vacuum element for main air flap left (flap "open") |
| 4 Regulating valve | 34 Check valve | 43a Single-acting vacuum element for main air flap left |
| 19 Vacuum switch (main switch, green) | 35 Temperature switch | 44 Vacuum element for main air flap right (flap "open") |
| 20 Vacuum switch (refrigerant compressor, yellow) | 36 Vent line for legroom flaps | 44a Single-acting vacuum element for main air flap right |
| 23 Vacuum switch (for refrigerant compressor, at "BI-LEVEL" only) | 37 Vacuum connection for tester | 80 Switchover valve "BI-LEVEL" (at "DEF") |
| 28 Switchover valve (legroom flaps) | 38 Specified leak point | 81 Vacuum switch (at "BI-LEVEL" only) |
| 29 Switchover valve (fresh air-recirculating air changeover switch) | 39 Vent line for regulating valve | 82 Check valve |
| 30 Vacuum lines | 40 Vacuum element for center jets (flap "open") | 83 Check valve |
| 31 Vacuum connection at intake pipe | 41 Vacuum element for legroom flaps (flaps "open") | |
| 32 Check valve | 42 2-stage vacuum element for defroster jets (flaps "open") | |



Function diagram 9

Pushbutton switch at "BI-LEVEL", "ON/OFF" switch refrigerant compressor at "ON", regulating valve in position "heating", coolant temperature $> 40^{\circ}\text{C}$ ($> 104^{\circ}\text{F}$), (temperature switch [35] without influence)

- | | | |
|---|---|--|
| 2 Pushbutton switch | 33 Vacuum reservoir | 43 Vacuum element for main air flap left (flap "open") |
| 4 Regulating valve | 34 Check valve | 43a Single-acting vacuum element for main air flap left |
| 19 Vacuum switch (main switch, green) | 35 Temperature switch | 44 Vacuum element for main air flap right (flap "open") |
| 20 Vacuum switch (refrigerant compressor, yellow) | 36 Vent line for legroom flaps | 44a Single-acting vacuum element for main air flap right |
| 23 Vacuum switch (for refrigerant compressor, at "BI-LEVEL" only) | 37 Vacuum connection for tester | 80 Switchover valve "BI-LEVEL" (at "DEF") |
| 28 Switchover valve (legroom flaps) | 38 Specified leak point | 81 Vacuum switch (at "BI-LEVEL" only) |
| 29 Switchover valve (fresh air-recirculating air changeover switch) | 39 Vent line for regulating valve | 82 Check valve |
| 30 Vacuum lines | 40 Vacuum element for center jets (flap "closed") | 83 Check valve |
| 31 Vacuum connection at intake pipe | 41 Vacuum element for legroom flaps (flaps "open") | |
| 32 Check valve | 42 2-stage vacuum element for defroster jets (flaps "closed" with leak air portion) | |



Function diagram 10

Pushbutton switch at "DEF", "ON/OFF" switch refrigerant compressor at "ON", regulating valve in position "heating", coolant temperature $> 40\text{ }^{\circ}\text{C}$ ($> 104\text{ }^{\circ}\text{F}$), (temperature switch [35] without influence)

- | | | |
|---|--|--|
| 2 Pushbutton switch | 33 Vacuum reservoir | 43 Vacuum element for main air flap left (flap "open") |
| 4 Regulating valve | 34 Check valve | 43a Single-acting vacuum element for main air flap left |
| 19 Vacuum switch (main switch, green) | 35 Temperature switch | 44 Vacuum element for main air flap right (flap "open") |
| 20 Vacuum switch (refrigerant compressor, yellow) | 36 Vent line for legroom flaps | 44a Single-acting vacuum element for main air flap right |
| 23 Vacuum switch (for refrigerant compressor, at "BI-LEVEL" only) | 37 Vacuum connection for tester | 80 Switchover valve "BI-LEVEL" (at "DEF") |
| 28 Switchover valve (legroom flaps) | 38 Specified leak point | 81 Vacuum switch (at "BI-LEVEL" only) |
| 29 Switchover valve (fresh air-recirculating air changeover switch) | 39 Vent line for regulating valve | 82 Check valve |
| 30 Vacuum lines | 40 Vacuum element for center jets (flap "closed") | 83 Check valve |
| 31 Vacuum connection at intake pipe | 41 Vacuum element for legroom flaps (flaps "closed") | |
| 32 Check valve | 42 Vacuum element for defroster jets (flaps "open") | |