

SECTION IV

450 SL/SLC SCHEMATIC

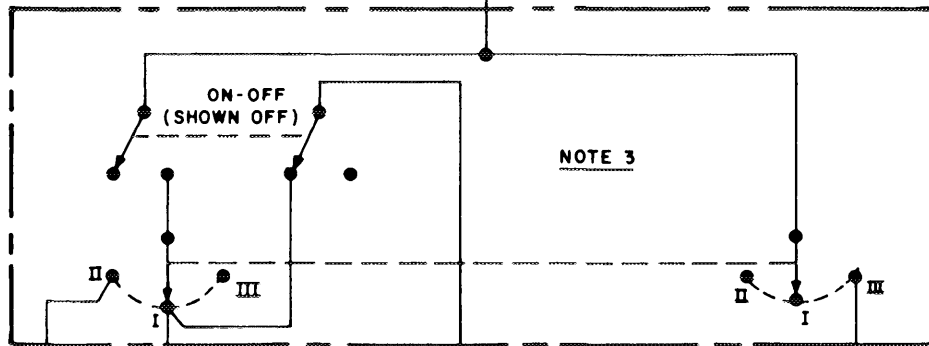
	Page	Schematic Location Coordinate
AIR CONDITIONING CONTROL	4-8	D13
BLOWER MOTOR CONTROL	4-8	D10
CHARGE	4-3	D16
CIGAR LIGHTER	4-3	D13
CLOCK	4-7	D24
COOLANT TEMPERATURE GAUGE	4-7	D22
CRUISE CONTROL	4-11	D6
ENGINE EMISSION CONTROL	4-8	D20
FUEL GAUGE	4-7	D21
FUEL INJECTION	4-12	D5
HEATED REAR WINDOW	4-11	D16
HEATER CONTROL	4-11	D13
HORNS	4-11	D2
IGNITION SYSTEM	4-3	D23
KICKDOWN	4-7	D10
LIGHT CIRCUITS		
AIR CONDITIONING THERMOSTAT	4-4	F9
ASH TRAY	4-3	D12
BACKUP	4-11	D18
BRAKE	4-11	D3
BRAKE SYSTEM WARNING	4-7	D20
FOG	4-4	G20
GEAR SELECTOR	4-4	D14
GLOVE BOX	4-11	D20
HEAD	4-4	G22
INSTRUMENT CLUSTER	4-4	F12
INTERIOR & TRUNK	4-7	D14
LOW FUEL WARNING	4-7	D21
MARKER	4-4	G14 G17
PARKING	4-4	G18
STANDING	4-4	G18
TAIL	4-4	G18
RADIO	4-3	D11
ANTENNA	4-3	D11
SEAT BELT INTERLOCK	4-3	D6
SLIDING ROOF	4-11	D10
START	4-3	B10/C20
TURN SIGNAL FLASHER	4-4	D7
TACH	4-7	D23
WINDOWS	4-7	D5
WINDSHIELD WIPER WASHER	4-8	E5
POWER BUS DETAILS	4-11	D23
SPECIAL GROUNDING CIRCUITS	4-12	D14

WINDSHIELD WIPER/WASHER

NOTE 3

WIPER ROCKER SWITCH POS.
 I - NORMAL SPEED,
 II - HIGH SPEED,
 III - NORMAL SPEED, INTE
 OPERATION.

**COMBINATION
 SWITCH
 (WIPER CONTROL)**



NOTE 11

WHEN THE WINDOW WASHER IS
 ACTIVATED, RELAY B IS ENGAGED
 FOR APPROXIMATELY 3 SECONDS,
 CAUSING THE WIPER MOTOR TO
 OPERATE AT LOW SPEED.

**WINDOW
 WASHER
 SWITCH**

C106 13

12

9

4

8

14

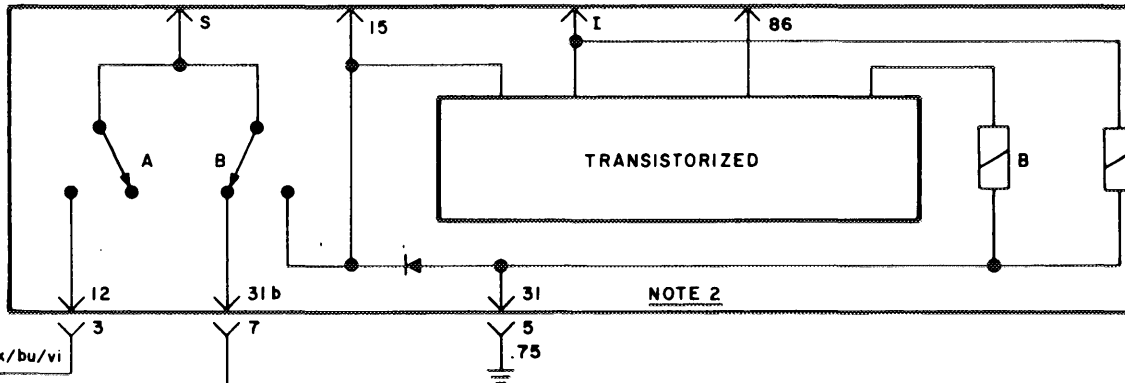
1

.75 bk/rd/vi

NOTE 11

TO BATTERY BUS
 VIA CIGAR LIGHTER, 4-3, 814

INTERVAL WIPE R



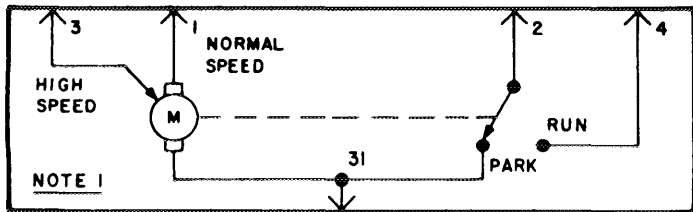
NOTE 2

NOTE 1

PARK - RUN SWITCH IS IN PARK POSITION ONLY
 WHEN WIPER BLADE ARE IN PARK POSITION.

NOTE 2

DURING NORMAL AND HIGH SPEED OPERATION,
 RELAYS A AND B REMAIN DE-ENERGIZED.
 DURING INTERMITTENT OPERATION, RELAY A IS
 CONTINUOUSLY ENERGIZED AND RELAY B IS
 AUTOMATICALLY ENERGIZED ONCE EACH
 4 SECONDS.



NOTE 1

1.5
 6

1 2 3 4 5 6

START-RUN BUS

LOWER SPEED SPEED

2.5 bk/vi

F12 (8A)

AC-STARTER RELAY KEY 4

2.5 bk/wt

F9 (8A)

2.5 bk/gn/wt

1 bk/gn

E.C.U.

FUE INJE REL KEY

.75 bu/wt

.75 bk

.75 bk

HOT START RELAY

NOTE 10

TRANSISTORIZED

.75 bk

AIR-CONDITIONER THERMOSTAT (CLOSES ON INCREASING TEMPERATURE)

CHANGE-OVER VALVE RELAY KEY 5

WATER TEMPERATURE SENSOR

2.5 bu/gn

AIR CONDITIONER CLUTCH

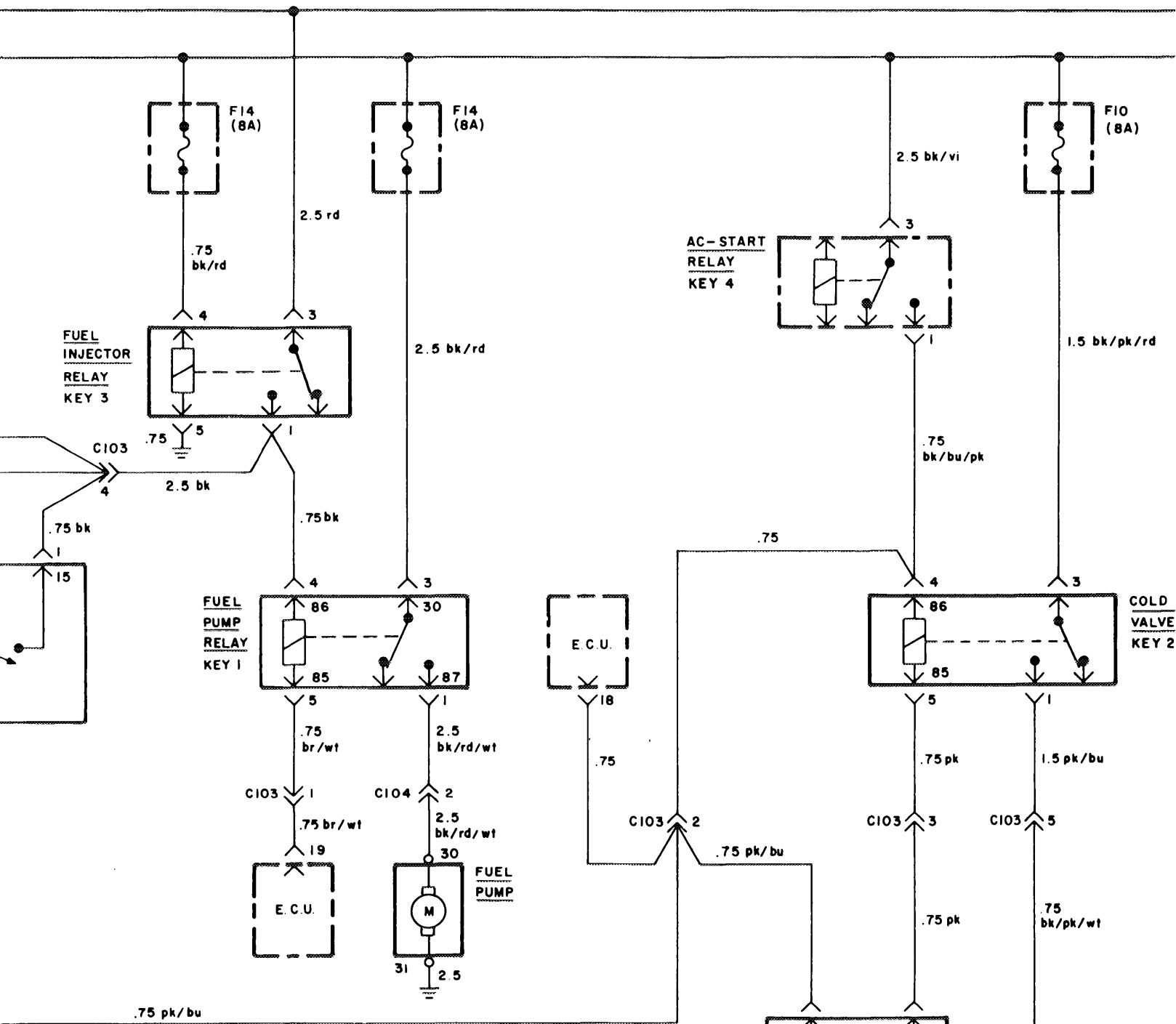
CHANGE OVER VALVE NOTE 5

ENGINE TEMPERATURE SWITCH (CLOSED WITH ENGINE COOLANT TEMPERATURE ABOVE 100°C/212°F) NOTE 6

NOTE 10

DURING A STARTING ATTEMPT, IF THE ENGINE IS HOT BY THE 100°C/212°F ENGINE TEMPERATURE SWITCH, ENGAGED FOR MORE THAN 3 SECONDS, THE HOT START RELAY ENGAGES THE WATER TEMPERATURE SENSOR INPUT TO THE ECU FOR 4 SECONDS. THIS OPENING ENRICHES THE AIR MIXTURE BY INCREASING THE TIME THE INJECTOR IS OPEN, MAKING STARTING EASIER. THIS SEQUENCE OCCURS ONLY ONCE DURING EACH STARTING ATTEMPT.

ENGINE EMISSION CONTROL

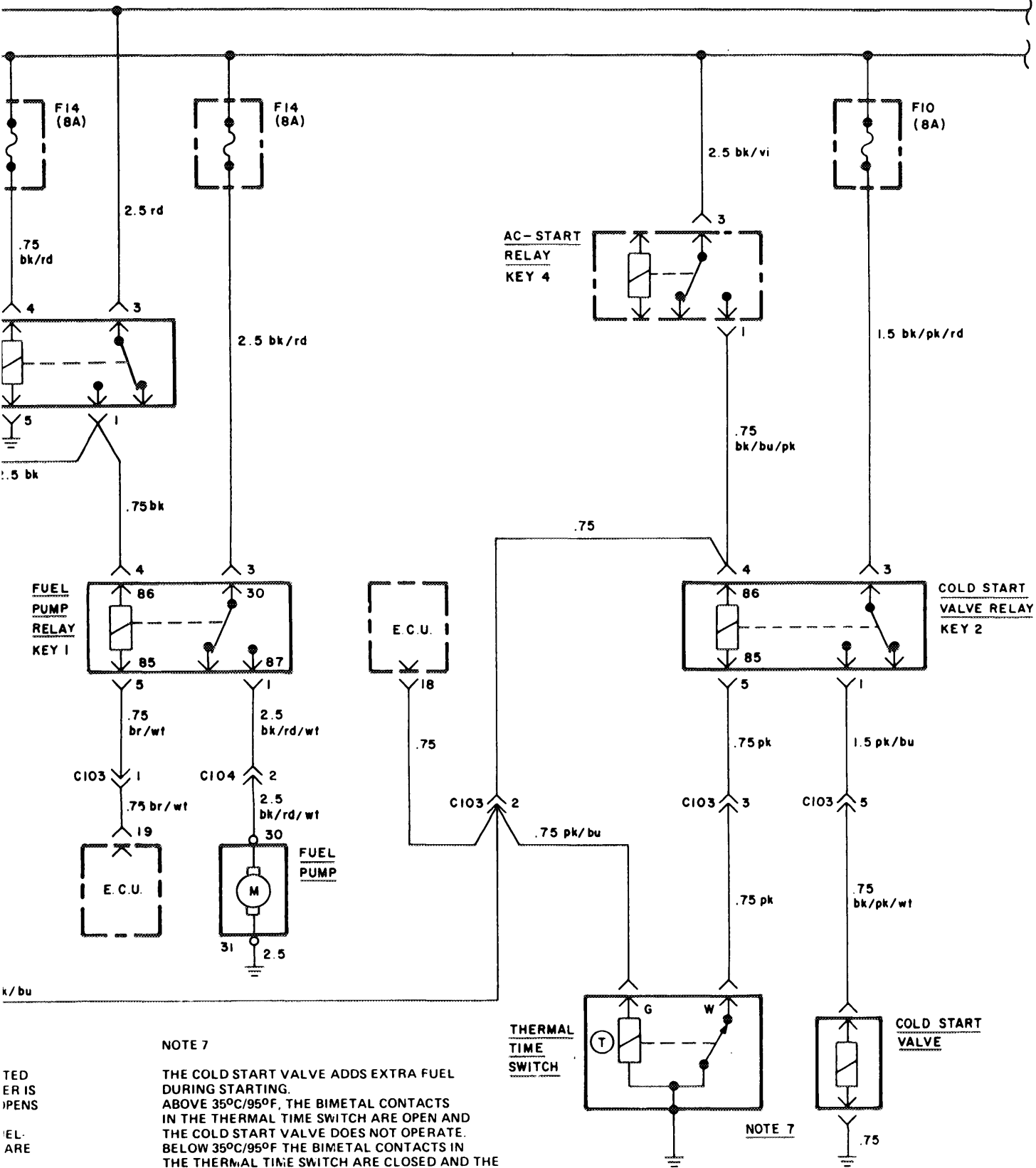


NOTE 7

THE COLD START VALVE ADDS EXTRA FUEL DURING STARTING. ABOVE 35°C/95°F, THE BIMETAL CONTACTS IN THE THERMAL TIME SWITCH ARE OPEN AND THE COLD START VALVE DOES NOT OPERATE. BELOW 35°C/95°F THE BIMETAL CONTACTS IN THE THERMAL TIME SWITCH ARE CLOSED AND THE COLD START VALVE OPENS DURING CRANKING. AFTER A MAXIMUM OF 12 SECONDS, THE THERMAL TIME SWITCH BIMETAL CONTACTS OPEN, SHUTTING OFF THE COLD START VALVE. 1

ENGINE IS HOT AS INDICATED BY THE THERMAL TIME SWITCH, THE STARTER IS SHUT OFF AND THE HOT START RELAY OPENS TO THE ELECTRONIC CONTROL UNIT ENRICHES THE FUEL. THE FUEL INJECTION VALVES ARE

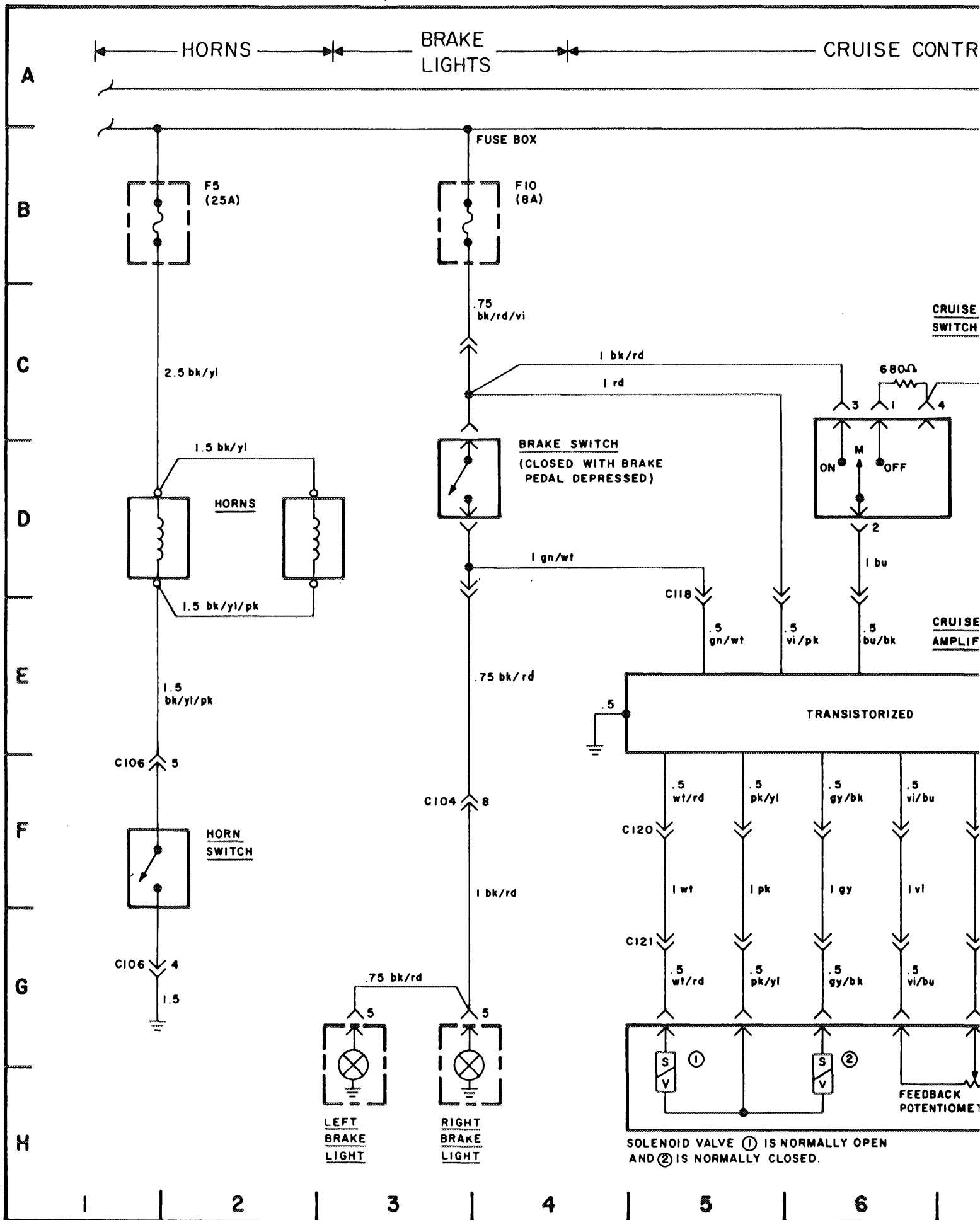
OPERATING EACH STARTING



NOTE 7

THE COLD START VALVE ADDS EXTRA FUEL DURING STARTING. ABOVE 35°C/95°F, THE BIMETAL CONTACTS IN THE THERMAL TIME SWITCH ARE OPEN AND THE COLD START VALVE DOES NOT OPERATE. BELOW 35°C/95°F THE BIMETAL CONTACTS IN THE THERMAL TIME SWITCH ARE CLOSED AND THE COLD START VALVE OPENS DURING CRANKING. AFTER A MANIMUM OF 12 SECONDS, THE THERMAL TIME SWITCH BIMETAL CONTACTS OPEN, SHUTTING OFF THE COLD START VALVE. 1

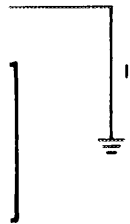
ED
ER IS
PENS
EL-
ARE



BATTERY BUS

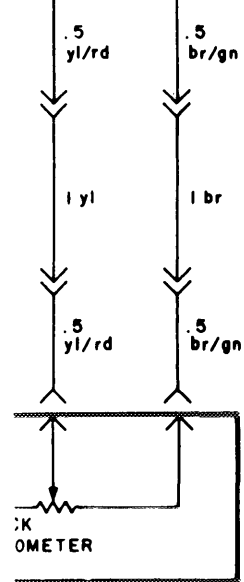
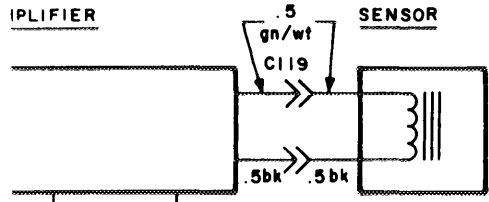
START-RUN BUS

CRUISE CONTROL
SWITCH

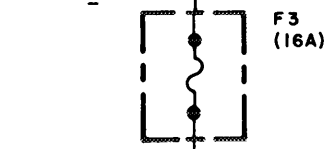
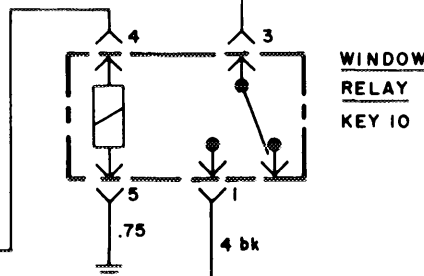
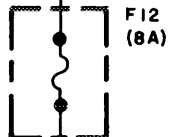


CRUISE CONTROL
AMPLIFIER

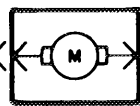
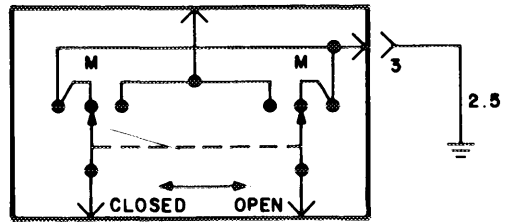
SPEED
SENSOR



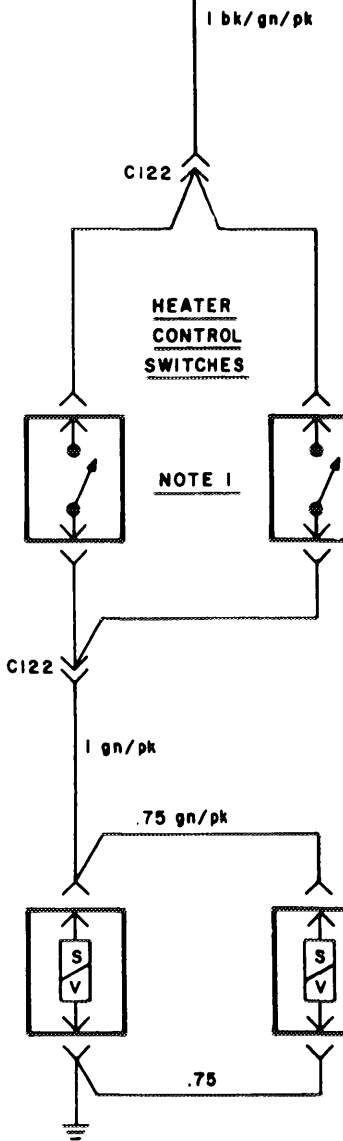
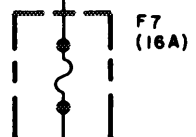
THROTTLE
ACTUATOR



SLIDING ROOF
SWITCH



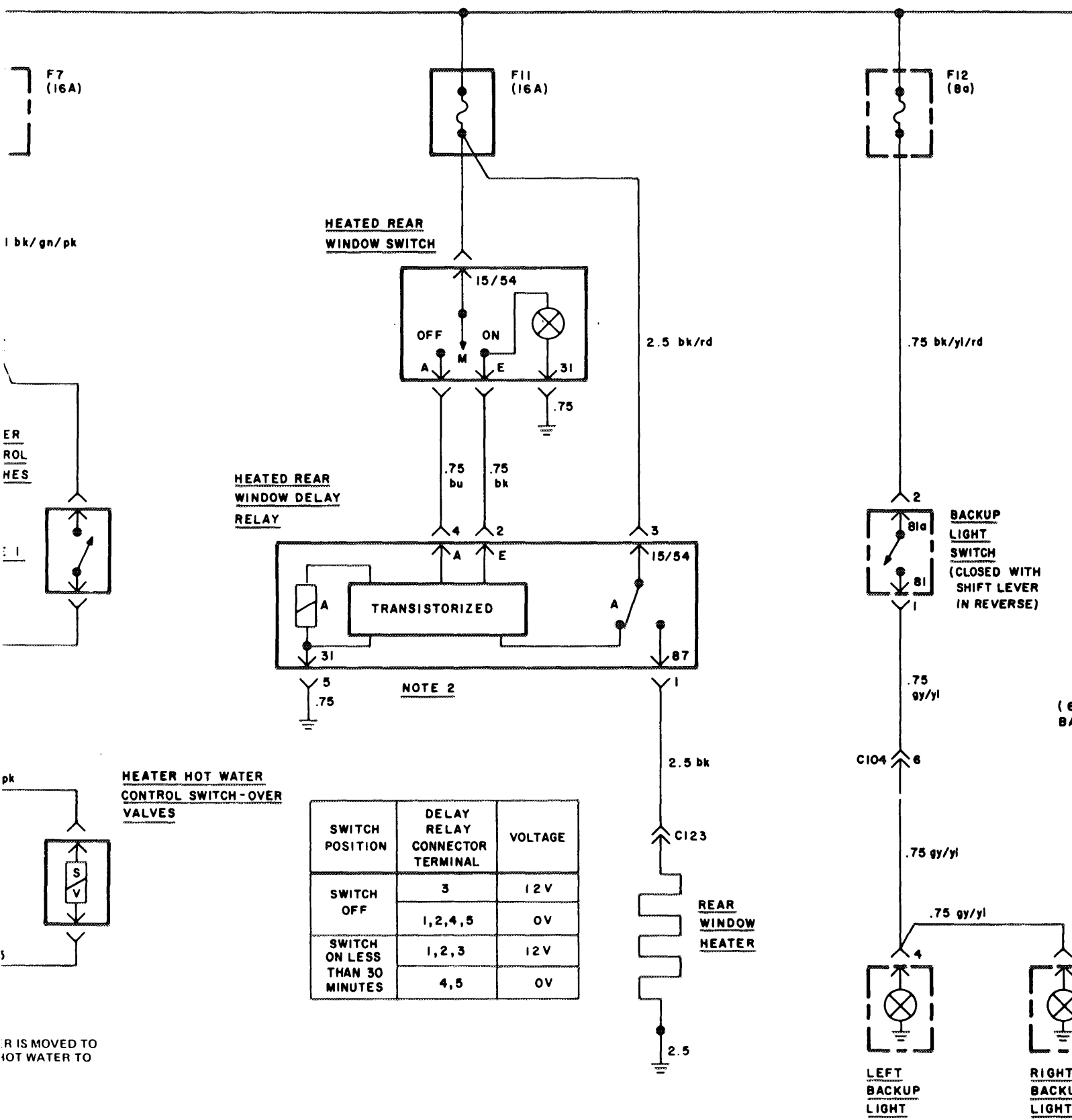
SLIDING
ROOF
MOTOR



NOTE 1

SWITCH CLOSING WHENEVER HEATER LEVER IS MOVED TO ON POSITION. SOLENOID VALVES ALLOW HOT WATER TO FLOW TO HEATER COIL.

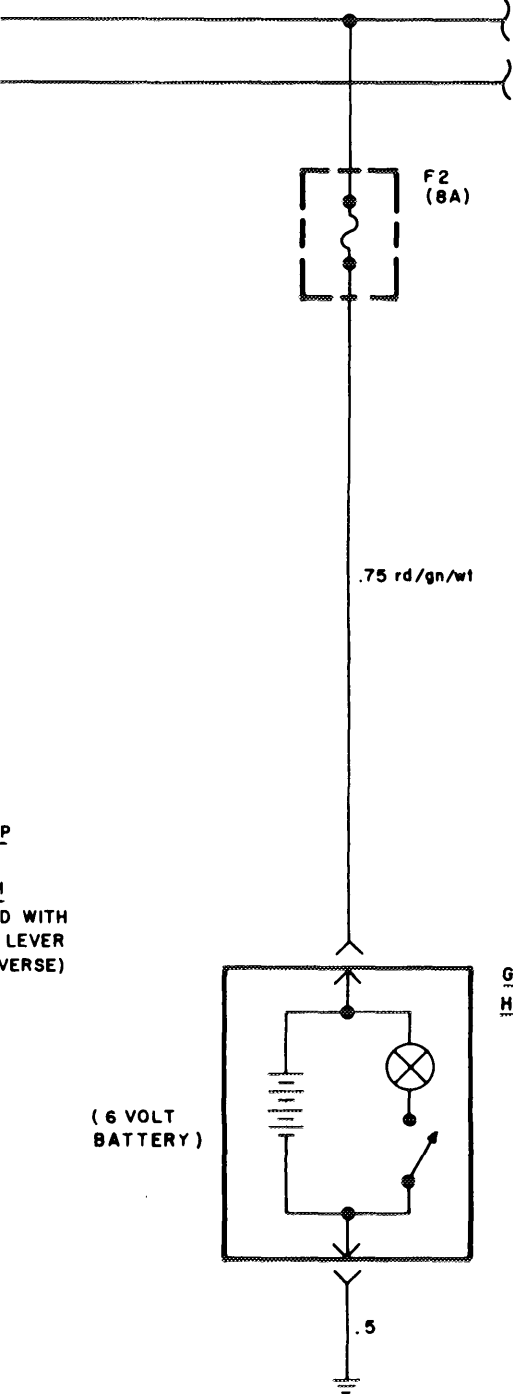
CONTROL — HEATED REAR WINDOW — BACKUP LIGHTS



NOTE 2

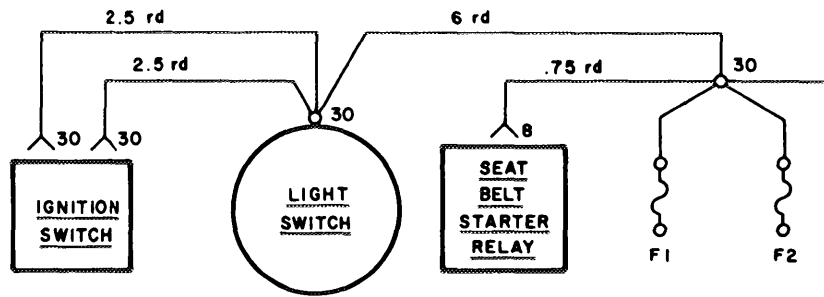
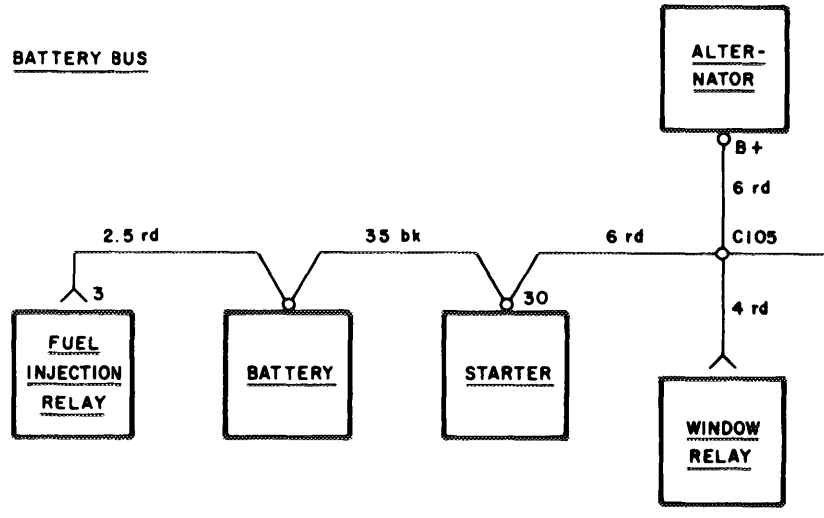
SWITCH POSITION	DELAY RELAY CONNECTOR TERMINAL	VOLTAGE
SWITCH OFF	3	12 V
	1, 2, 4, 5	0V
SWITCH ON LESS THAN 30 MINUTES	1, 2, 3	12 V
	4, 5	0V

TS ———> |<| GLOVE BOX HAND LIGHT

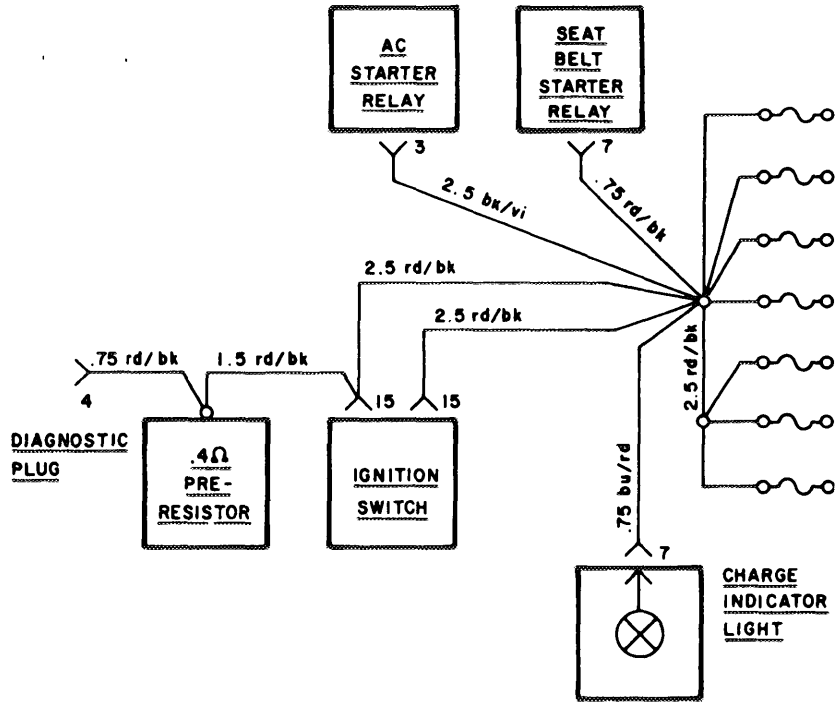


POWER BUS DETAILS

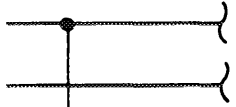
BATTERY BUS



START - RUN BUS

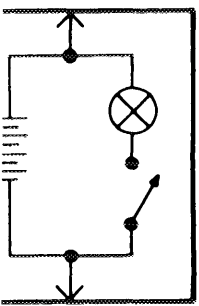


GLOVE BOX
HAND LIGHT



.75 rd/gn/wt

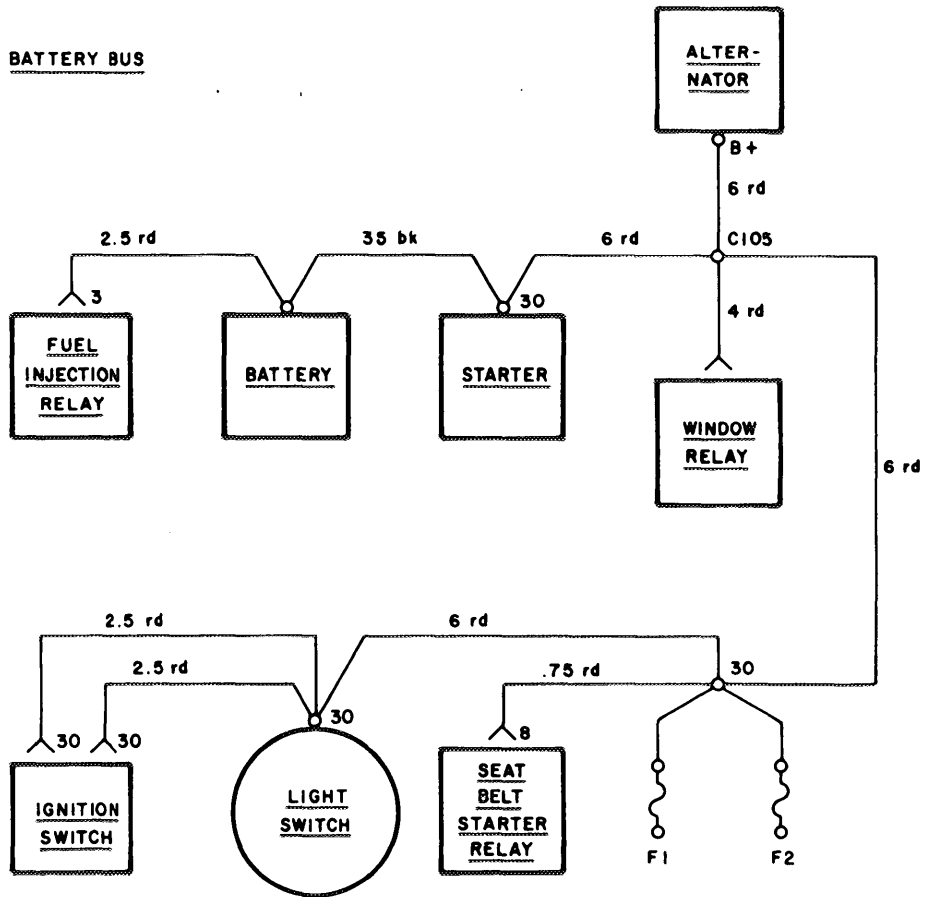
GLOVE BOX
HAND LIGHT



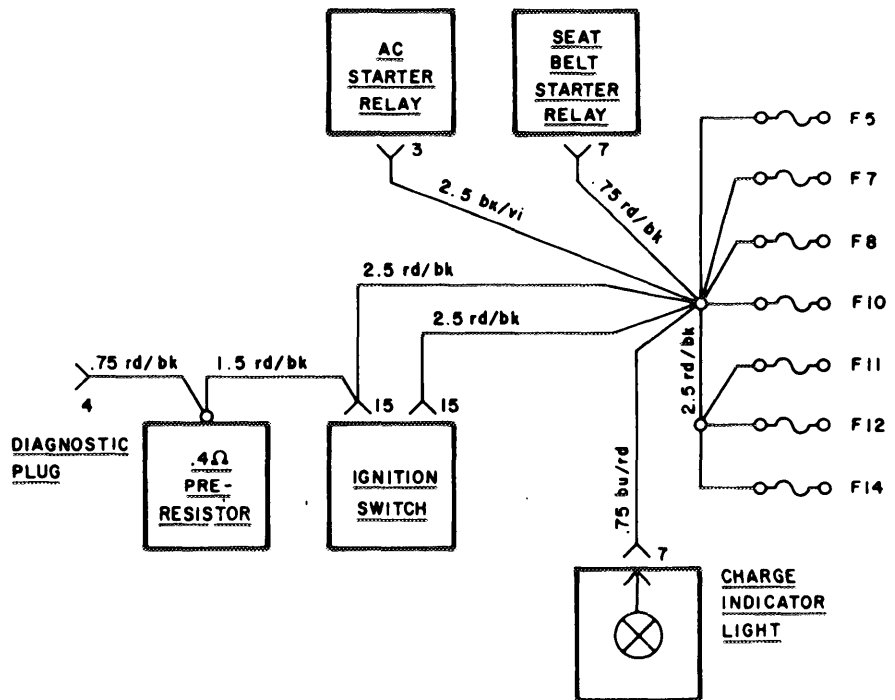
.5

POWER BUS DETAILS

BATTERY BUS



START - RUN BUS



20

21

22

23

24

25

A
B
C
D
E
F
G
H

FUEL INJECTION

A

B

C

D

E

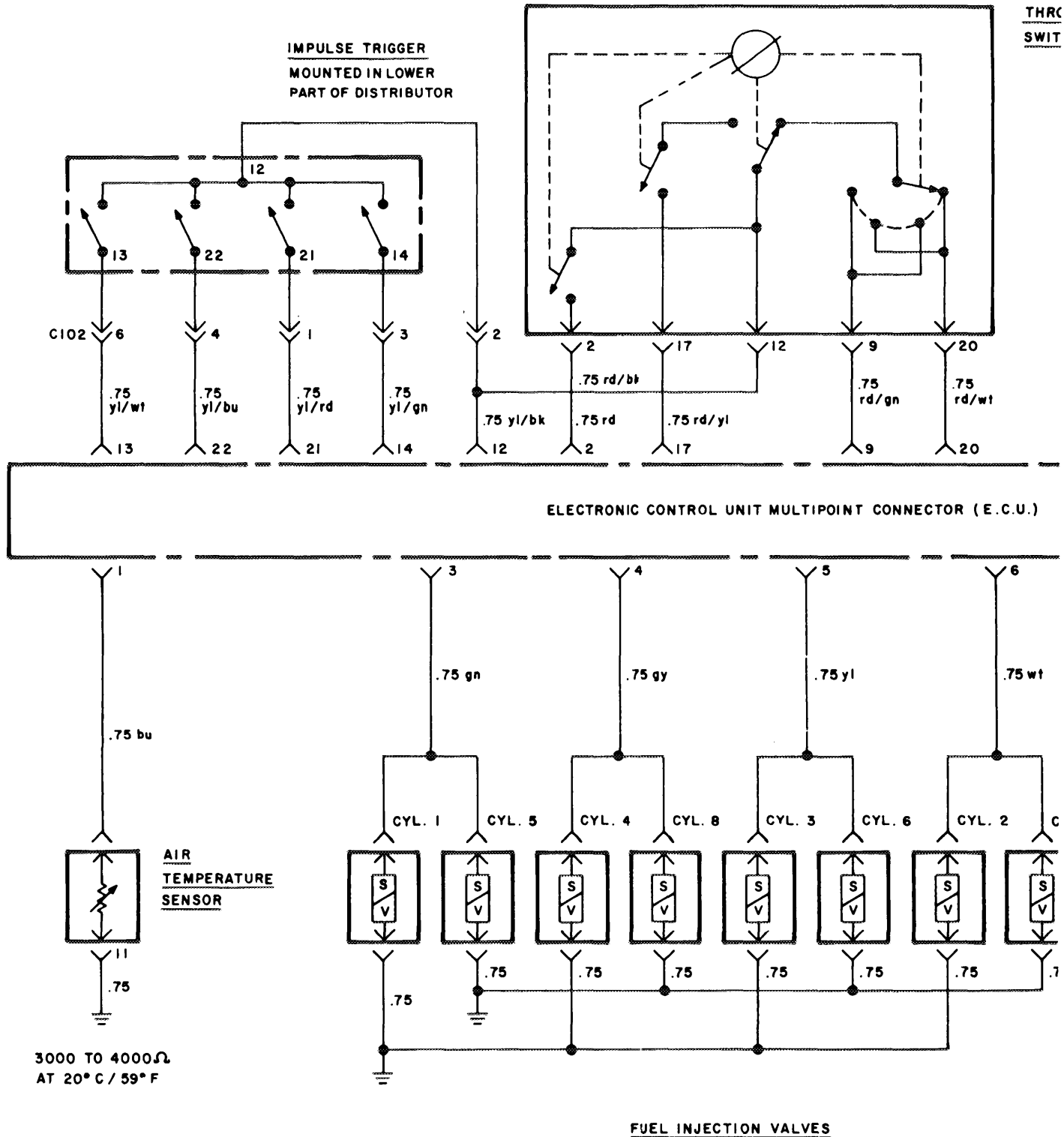
F

G

H

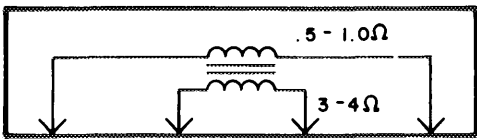
THROTTLE
SWITCH

IMPULSE TRIGGER
MOUNTED IN LOWER
PART OF DISTRIBUTOR



THROTTLE VALVE SWITCH

INTAKE MANIFOLD SENSOR

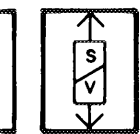


7 .75 gy/gn
8 .75 gy/bu
10 .75 gy/rd
15 .75 gy/bk

(E.C.U.)

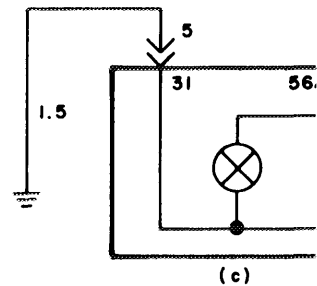


YL. 2 CYL. 7



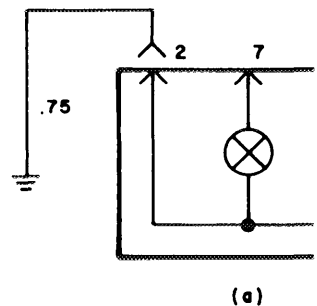
5 .75

FRONT LIGHT CIRCUIT (

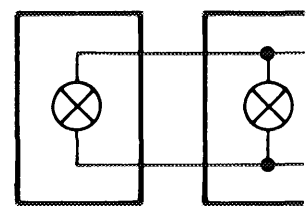


- (a) TURN SIGNAL LIGHT
- (b) STANDING / PARKING
- (c) HIGH BEAM

LEFT REAR LIGHT CIRCUIT



RIGHT REAR LIGHT CIRCUIT



(f)

7

8

9

10

11

12

SPECIAL GROUNDING CIRCUITS

A

B

C

D

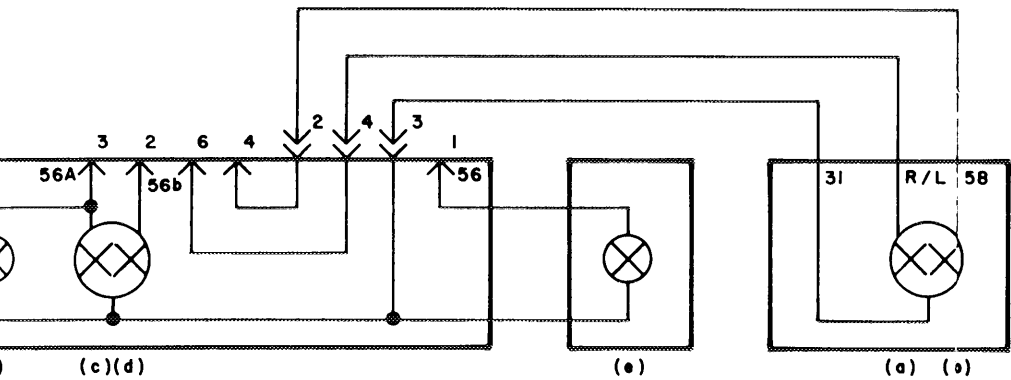
E

F

G

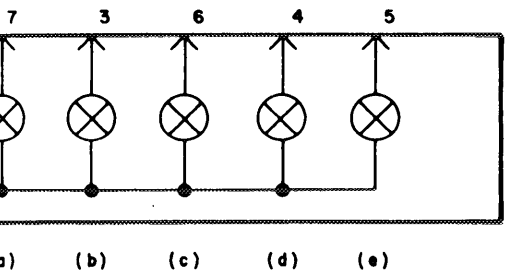
H

CIRCUIT (LEFT & RIGHT)



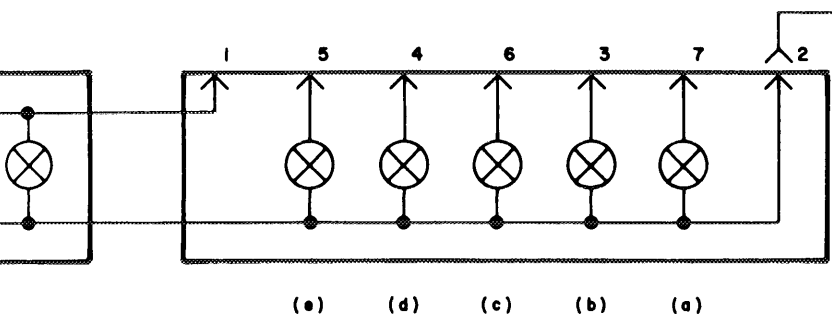
- (c)(d) PARKING LIGHT
- (d) LOW BEAM
- (e) SIDE MARKER LIGHT

RIGHT CIRCUIT



- (a) SIDE MARKER LIGHT
- (b) TURN SIGNAL LIGHT
- (c) TAIL / PARKING LIGHT
- (d) BACKUP LIGHT
- (e) BRAKE LIGHT

LEFT CIRCUIT



- (a) SIDE MARKER LIGHT
- (b) TURN SIGNAL LIGHT
- (c) TAIL / PARKING LIGHT
- (d) BACKUP LIGHT
- (e) BRAKE LIGHT
- (f) LICENCE PLATE LIGHT