

# INDEX

## INDEX - Alphabetical Listing of Electrical Circuits

	SCHEMATIC		SCHEMATIC
Air Injection Management ..		Lights (continued)	
Automatic Antenna .....	131	—Glove Box .....	123
Automatic Climate Control...	127	—Hazard .....	116
Auxiliary Fan .....	126	—Headlights .....	
Charging System .....		—Instrument Cluster .....	118
Cigar Lighter .....	131	—License .....	
Clock .....	120	—Marker .....	
Cruise Control .....		—Park .....	
Fuel Delivery .....		—Stop .....	
Fuse Information .....		—Tail .....	
Gauges .....	118	—Trunk .....	
Ground Distribution .....	133	—Turn Signal .....	116
Heated Seats .....	132	Power Distribution .....	
Horns .....	126	Power Windows .....	129
Idle Speed Stabilization ....		Radio .....	131
Ignition .....		Rear Defogger .....	128
Lambda Control .....		Sliding Roof .....	128
Lights		Start .....	
—Backup .....		Tachometer .....	118
—Center Console .....	119, 124	Transmission Kickdown ..	
—Courtesy .....	121	Warning Indicators .....	118
—Fog Lights .....		Warning System .....	117
		Wiper/Washer .....	125

## Fuse-Circuit List

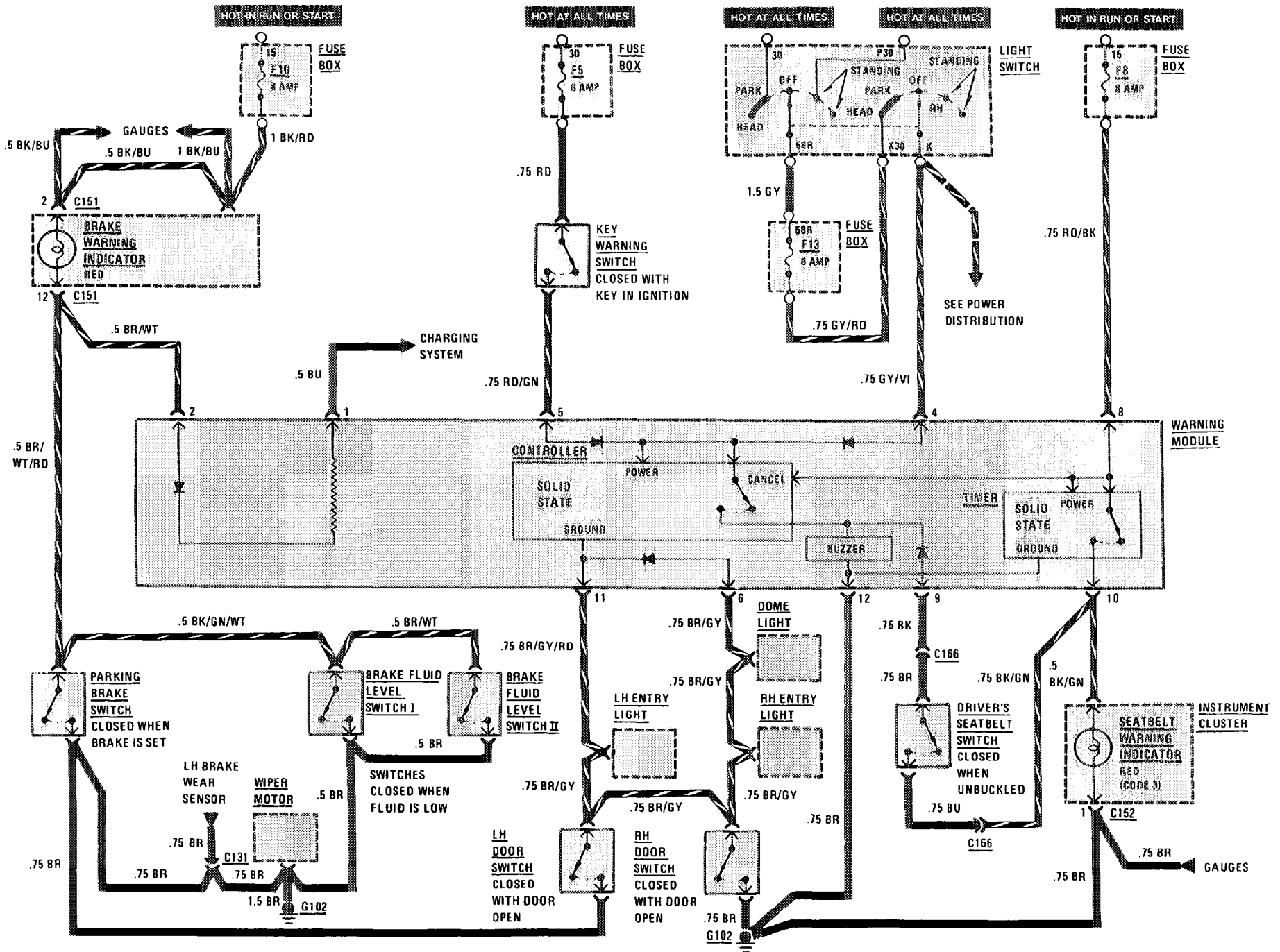
Fuse		Circuits Protected
No.	Amps (color)	
1	8(WT)	Automatic Antenna Clock Courtesy Lights Lights: Hazard Radio Trunk Light Warning System
2	16(PK)	Auxiliary Fan
3	16(PK)	Power Windows
4	16(PK)	Power Windows
5	16(PK)	Horns Sliding Roof
6	16(PK)	Automatic Climate Control
7	16(PK)	Heated Seats Rear Defogger
8	8(WT)	Backup Lights/Transmission Kickdown Warning System
9		NOT USED
10	8(WT)	Auxiliary Fan Lights: Turn Signal Power Windows Stoplights/Cruise Control Warning Indicators/Gauges

Fuse		Circuits Protected
No.	Amps (color)	
11	16(PK)	Headlights/Fog Lights Wiper/Washer
12	8(WT) *16(PK)	Cigar Lighter/Radio Glove Box Light *With Heated Seats
13	8(WT)	Illumination: Instrument Cluster/ Center Console Lights: Marker/License Lights: Park/Tail (RH)
14	2	NOT USED
15	16(PK)	NOT USED
16	8(WT)	Lights: Park/Tail (LH)
17	8(WT)	Headlights (RH High Beam)
18	8(WT)	Headlights (LH High Beam)
19	16(PK)	Headlights (RH Low Beam)/Fog Lights
20	8(WT)	Headlights (LH Low Beam)
AUX FUSE BOX	2	Automatic Climate Control



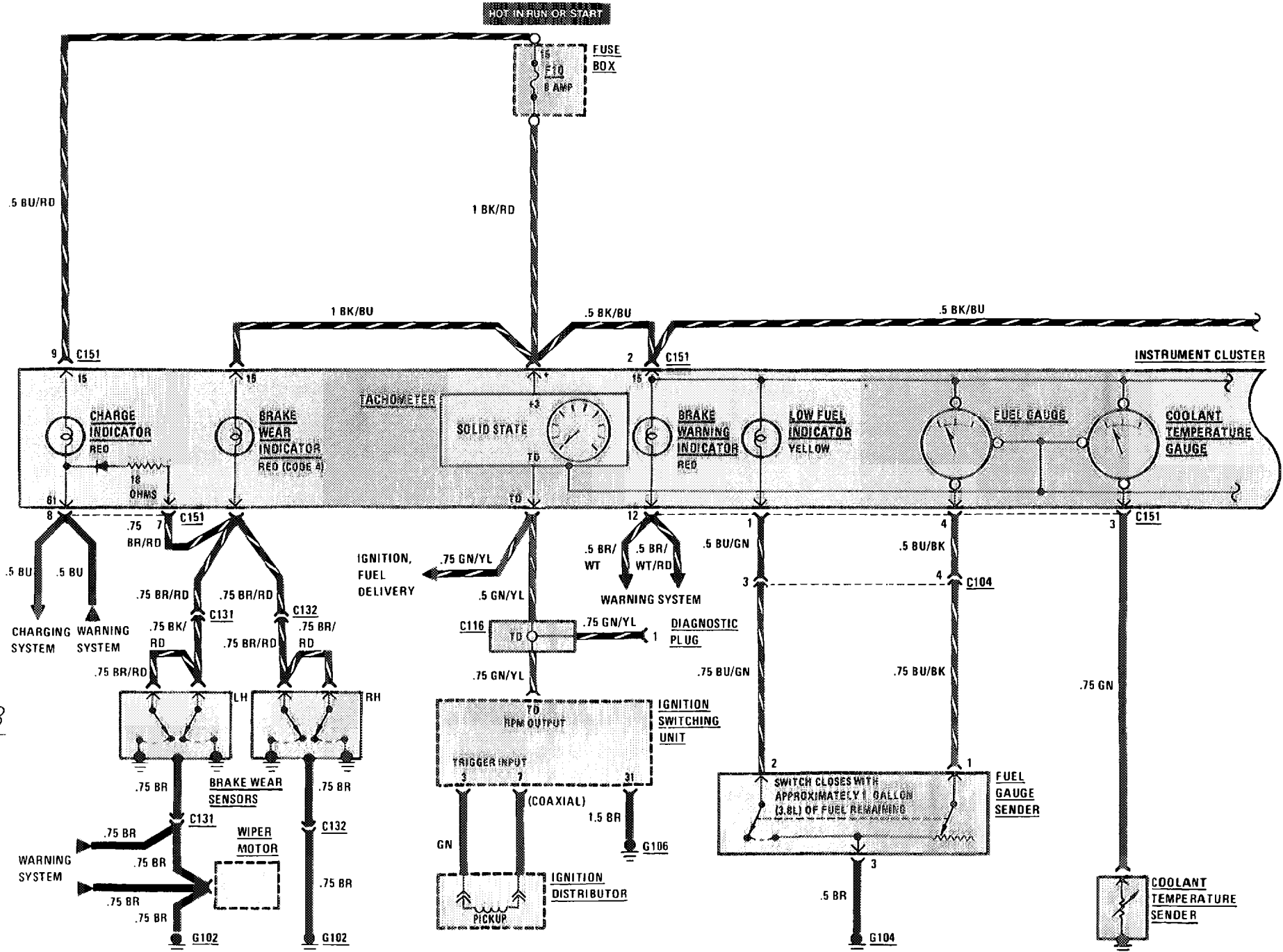
# WARNING SYSTEM

(For Component Locations See Page 208)



# WARNING INDICATORS/GAUGES/CLOCK

(For Component Locations See Page 207)

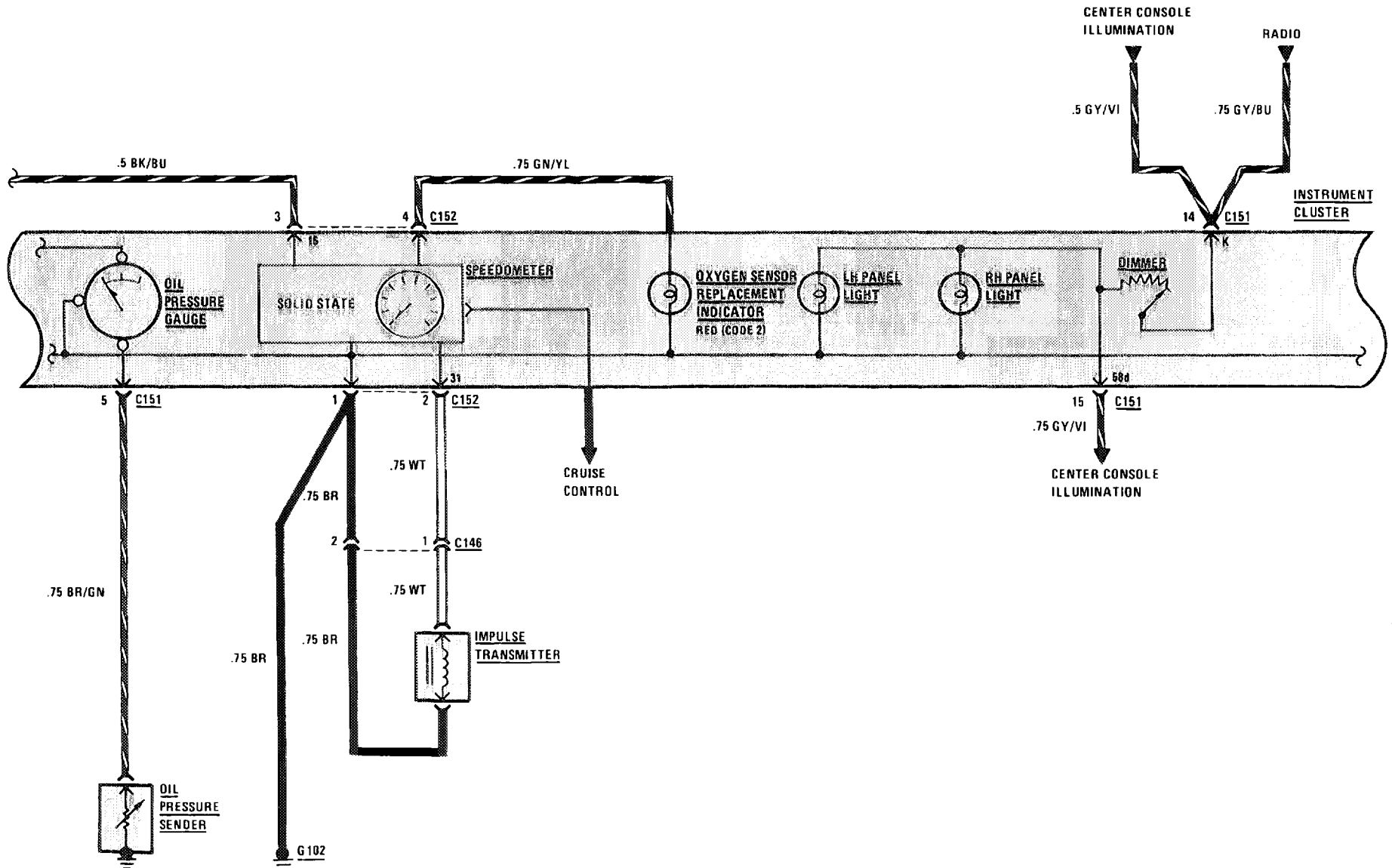


118

380  
SL/SLC

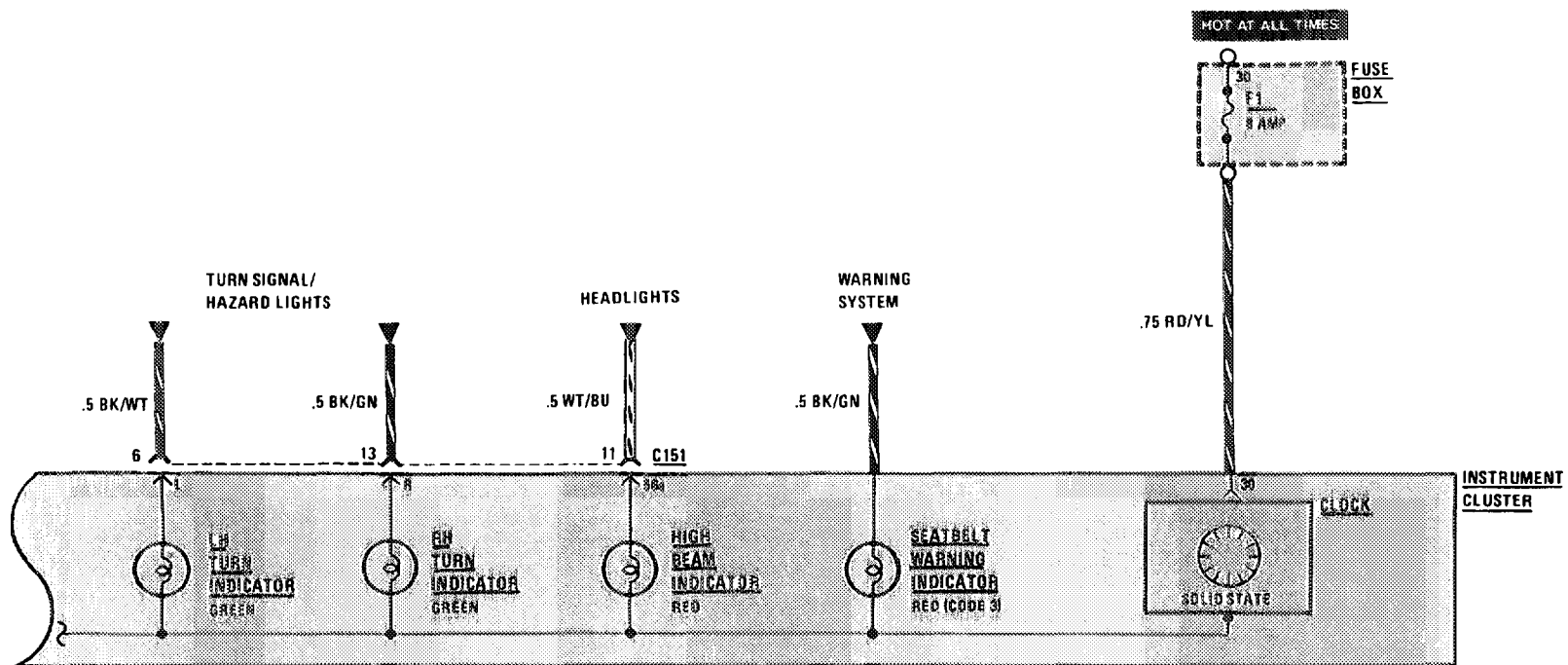
# WARNING INDICATORS/GAUGES/CLOCK

(For Component Locations See Page 207)



# WARNING INDICATORS/GAUGES/CLOCK

(For Component Locations See Page 207)



120

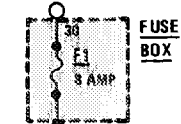
380  
SL/SLC

# COURTESY LIGHTS

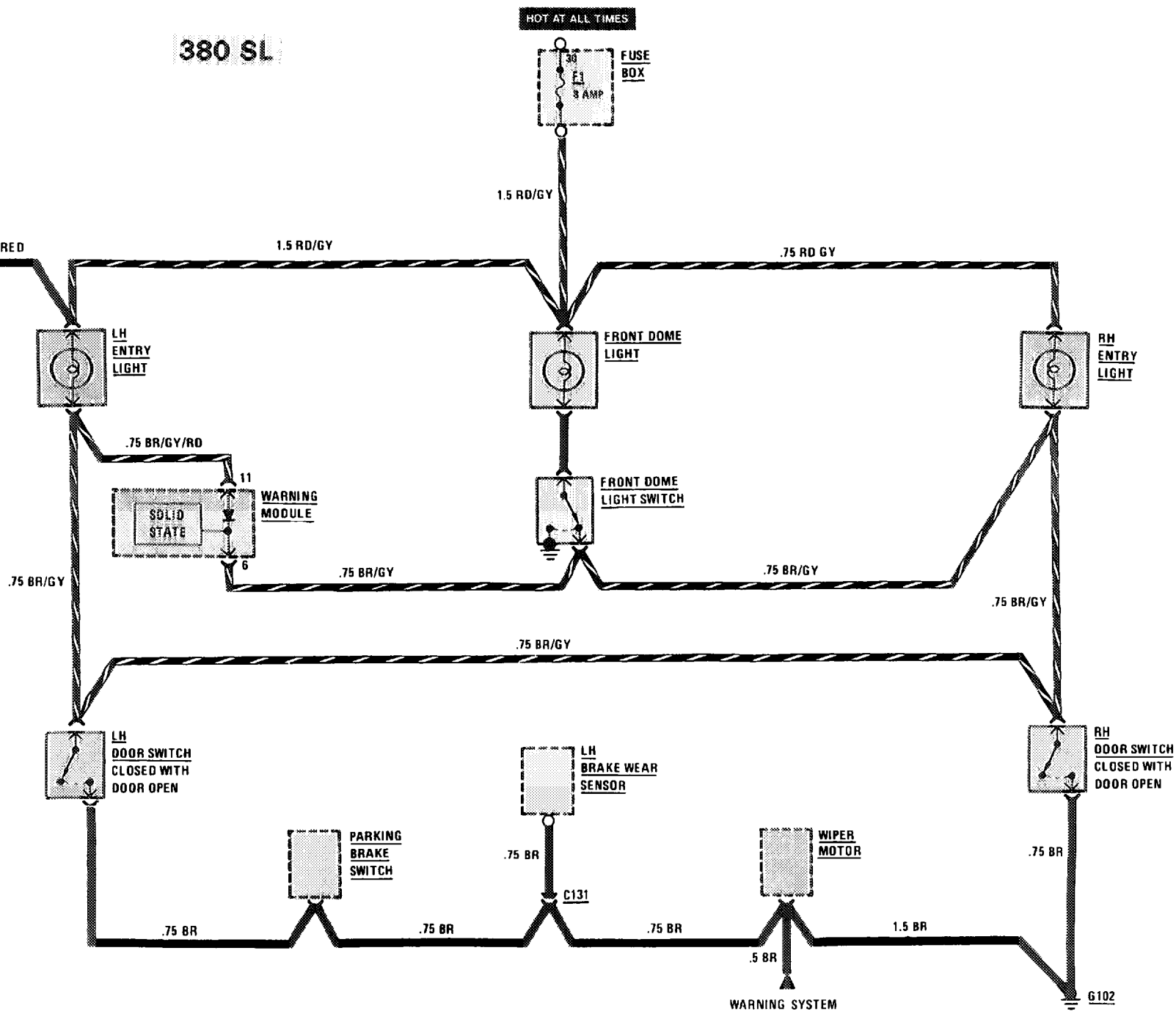
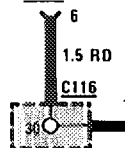
(For Component Locations See Page 203)

**380 SL**

HOT AT ALL TIMES



**DIAGNOSTIC PLUG**

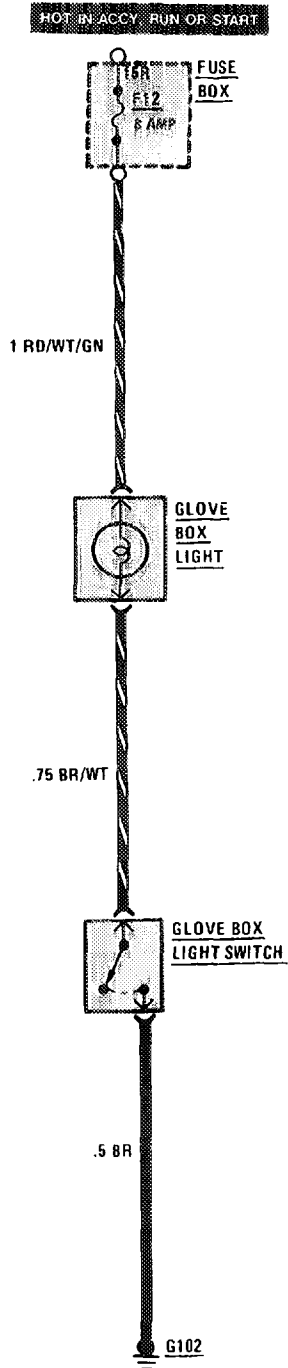




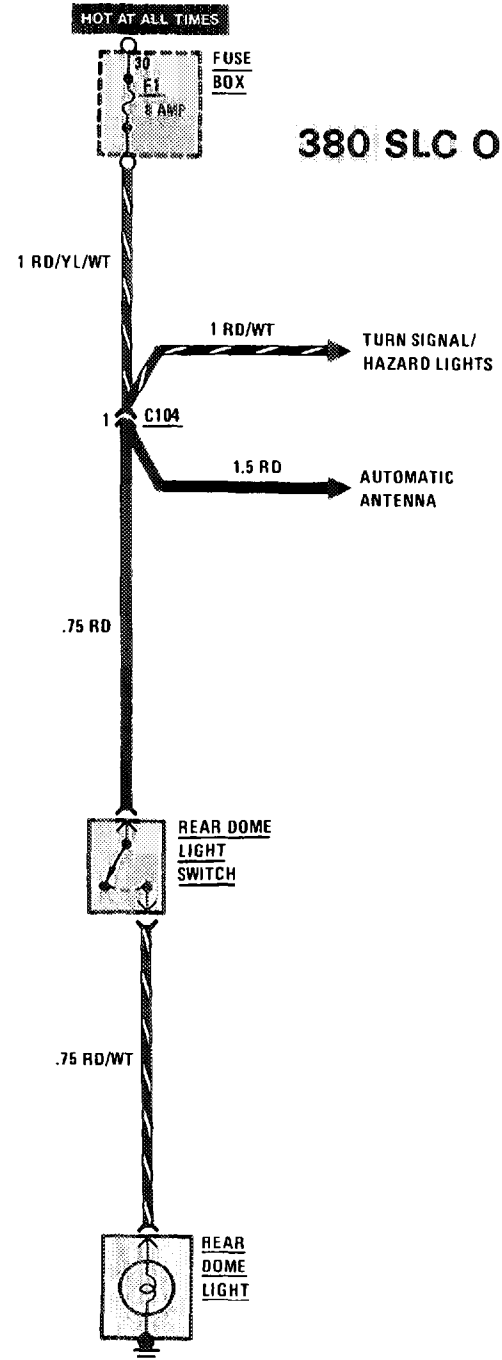


# GLOVE BOX LIGHT/COURTESY LIGHTS

(For Component Locations See Page 203)



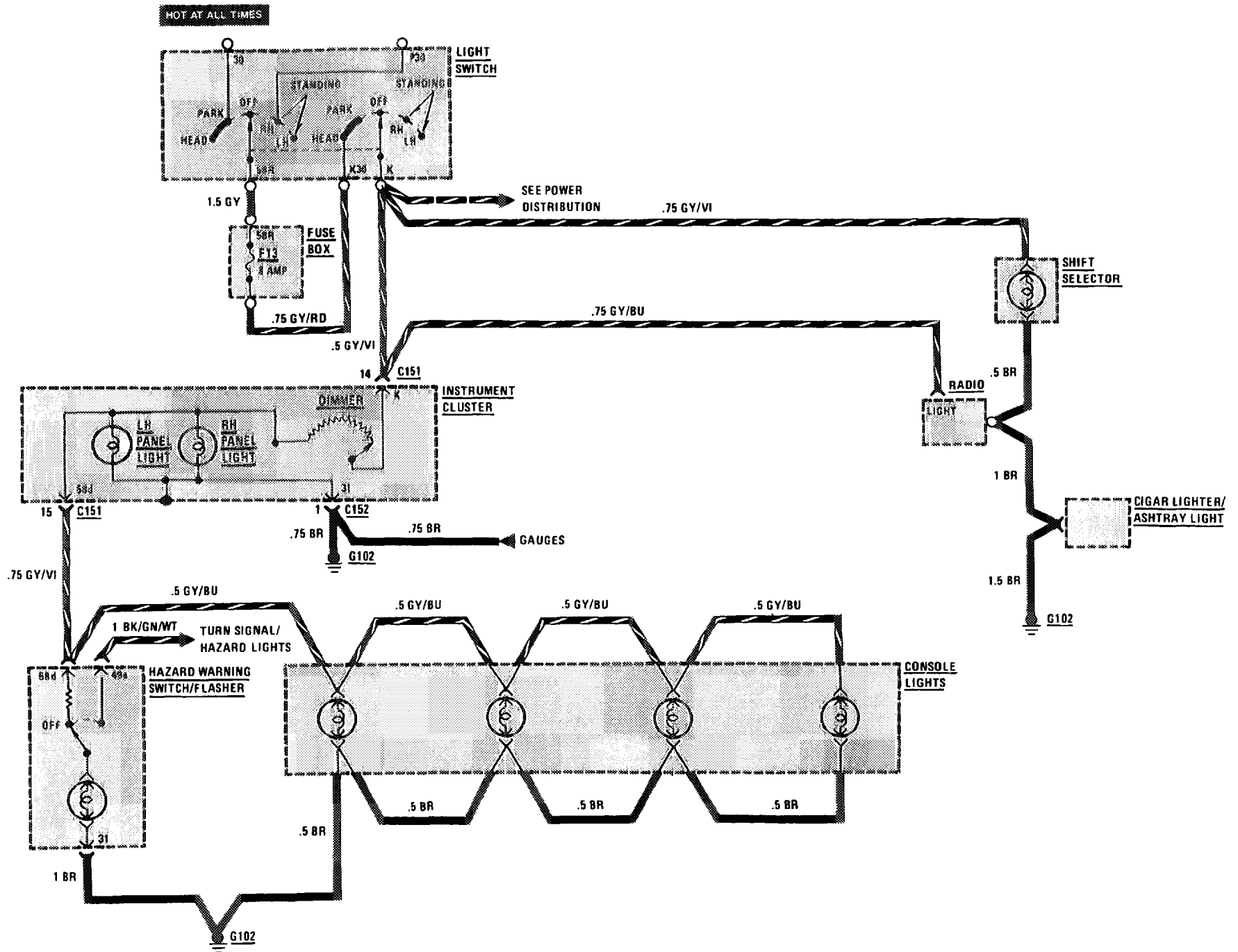
**380 SL/SLC**



**380 SLC ONLY**

# ILLUMINATION: INSTRUMENT CLUSTER/CENTER CONSOLE

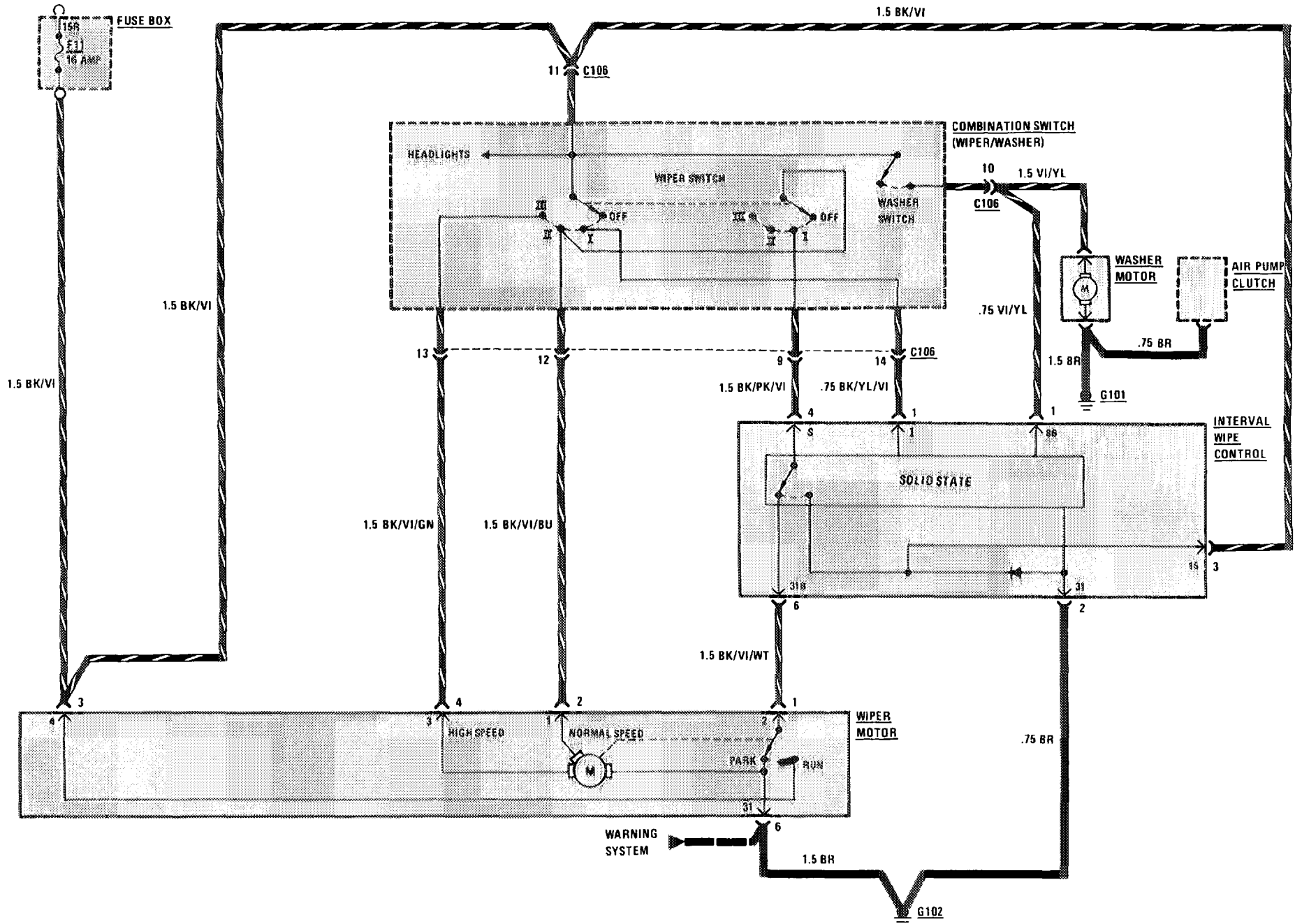
(For Component Locations See Page 204)



# WIPER/WASHER

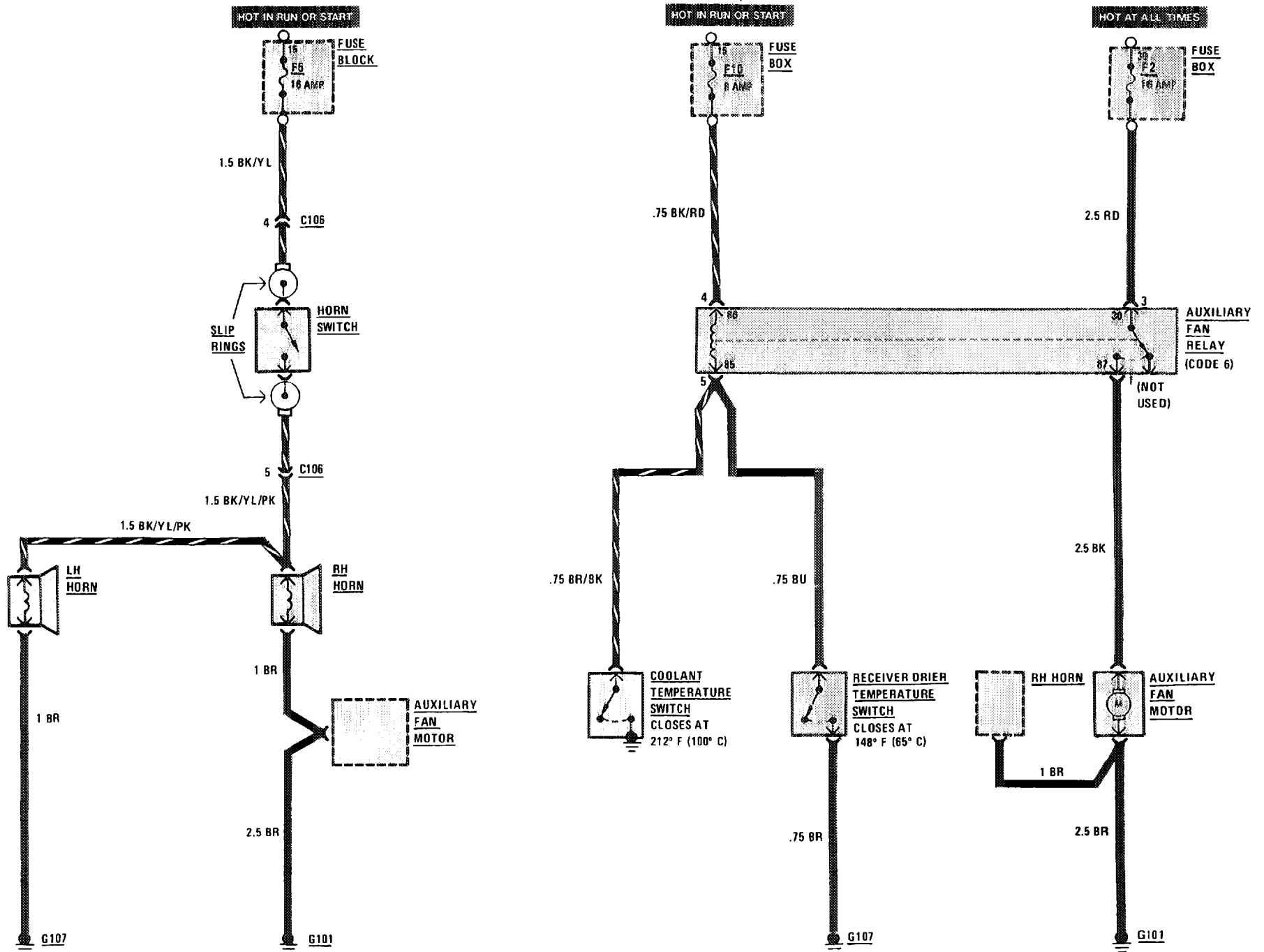
(For Component Locations See Page 208)

NOT IN ACCY. RUN OR START



# HORNS/AUXILIARY FAN

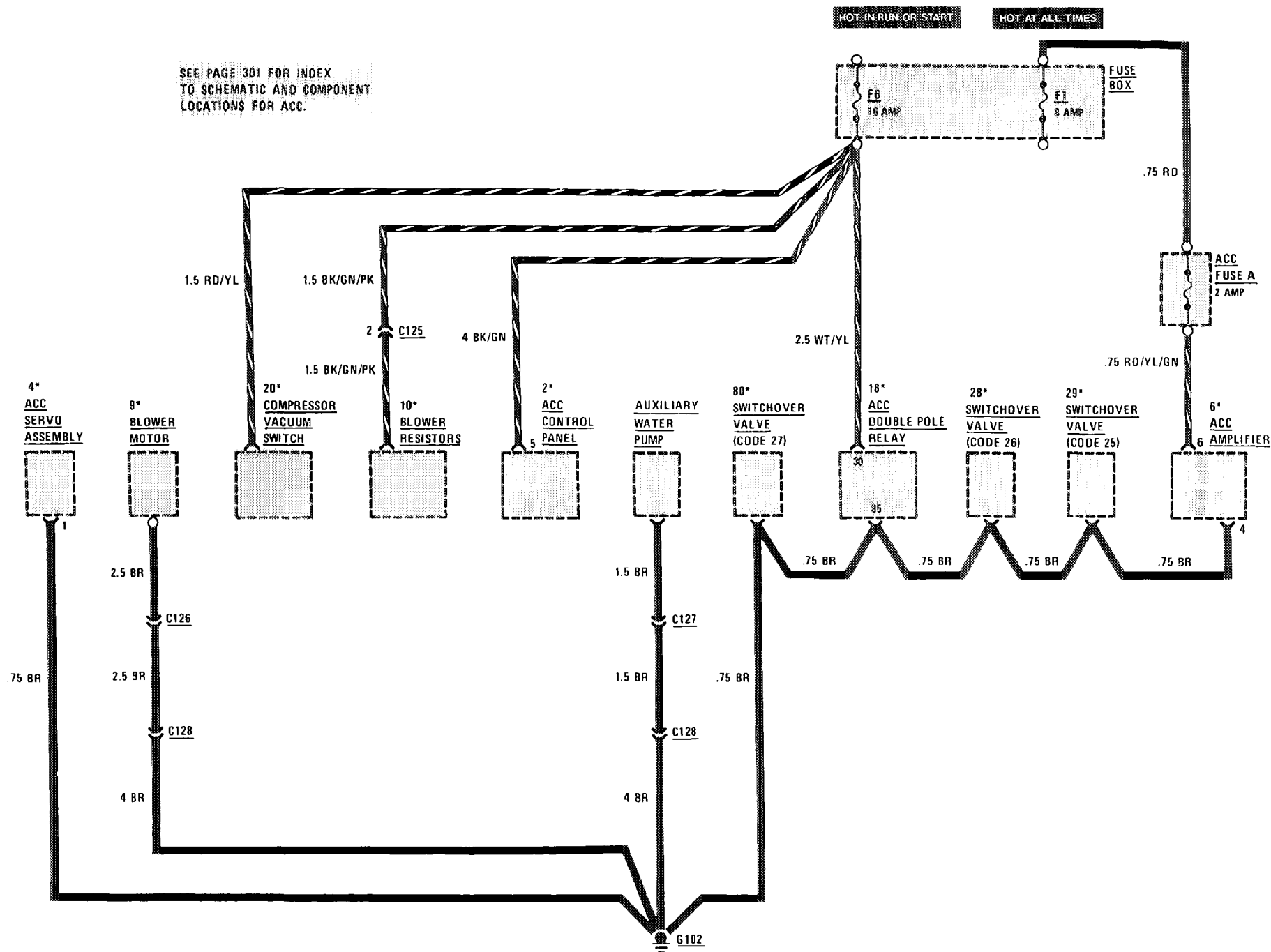
(For Component Locations See Page 204)



# AUTOMATIC CLIMATE CONTROL (ACC) POWER AND GROUND DISTRIBUTION

(For Component Locations See Page 328)

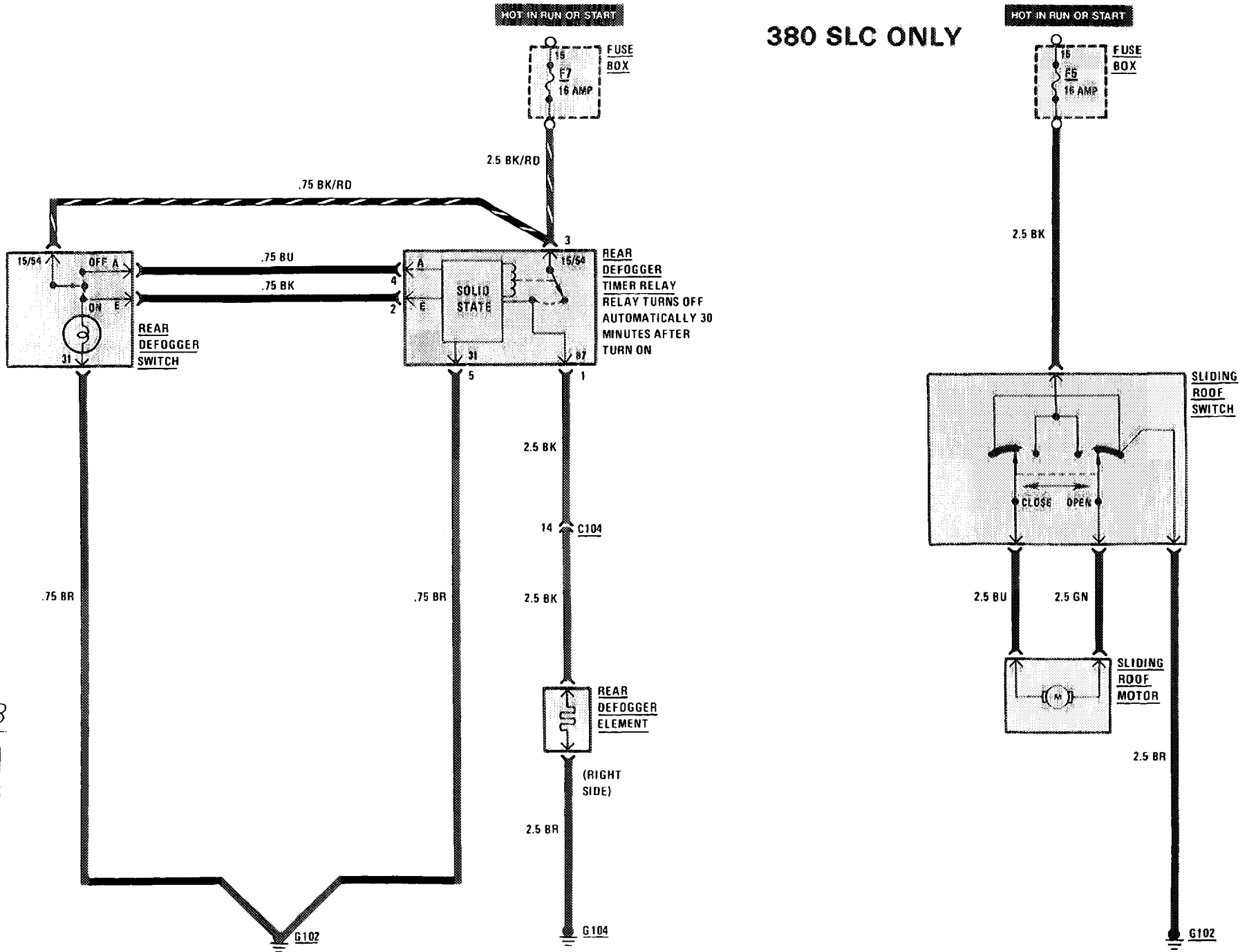
SEE PAGE 301 FOR INDEX  
TO SCHEMATIC AND COMPONENT  
LOCATIONS FOR ACC.



# REAR DEFOGGER/ SLIDING ROOF

(For Component Locations See Page 206)

## 380 SLC ONLY

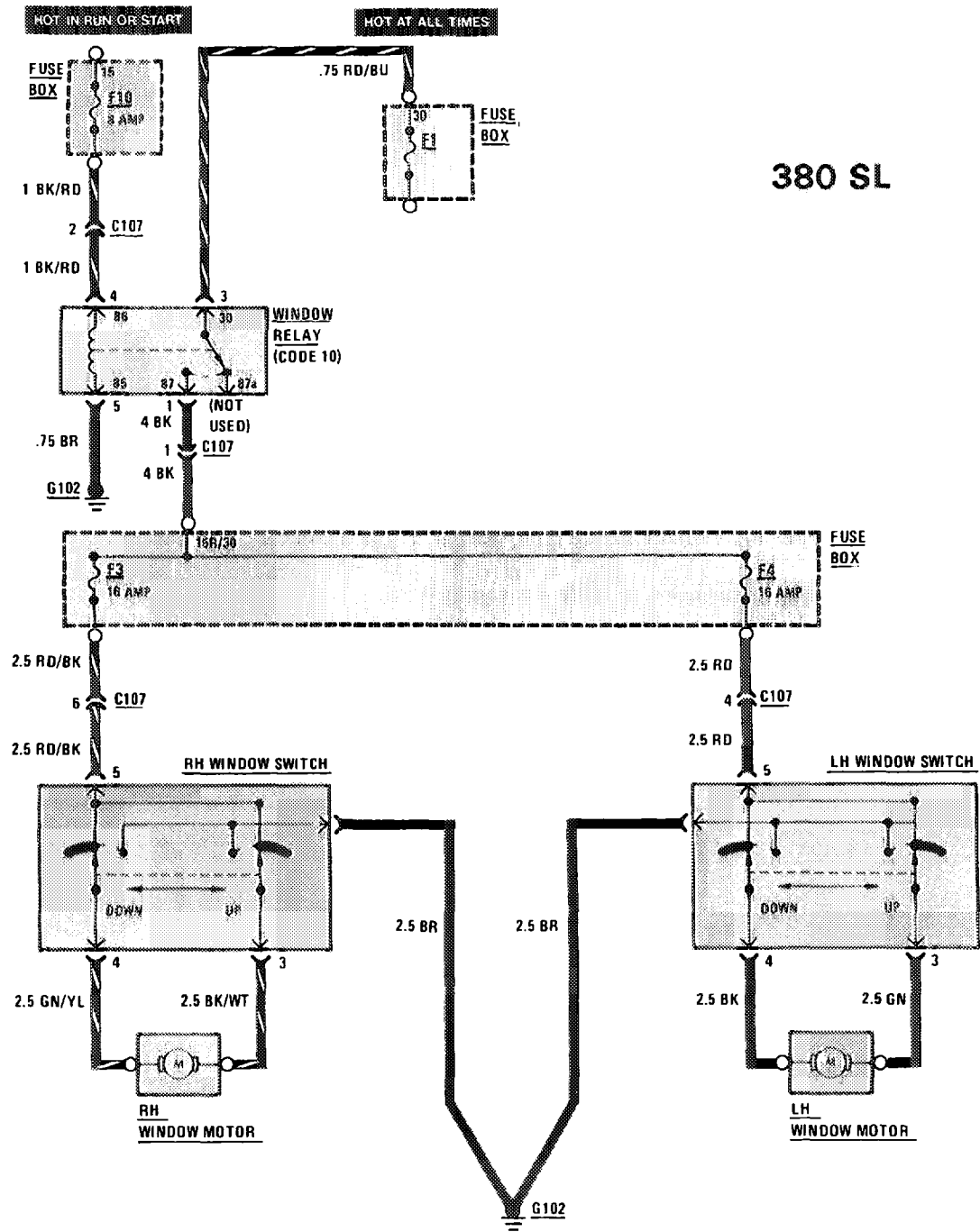


128

380  
SL/SLC

# POWER WINDOWS

(For Component Locations See Page 206)



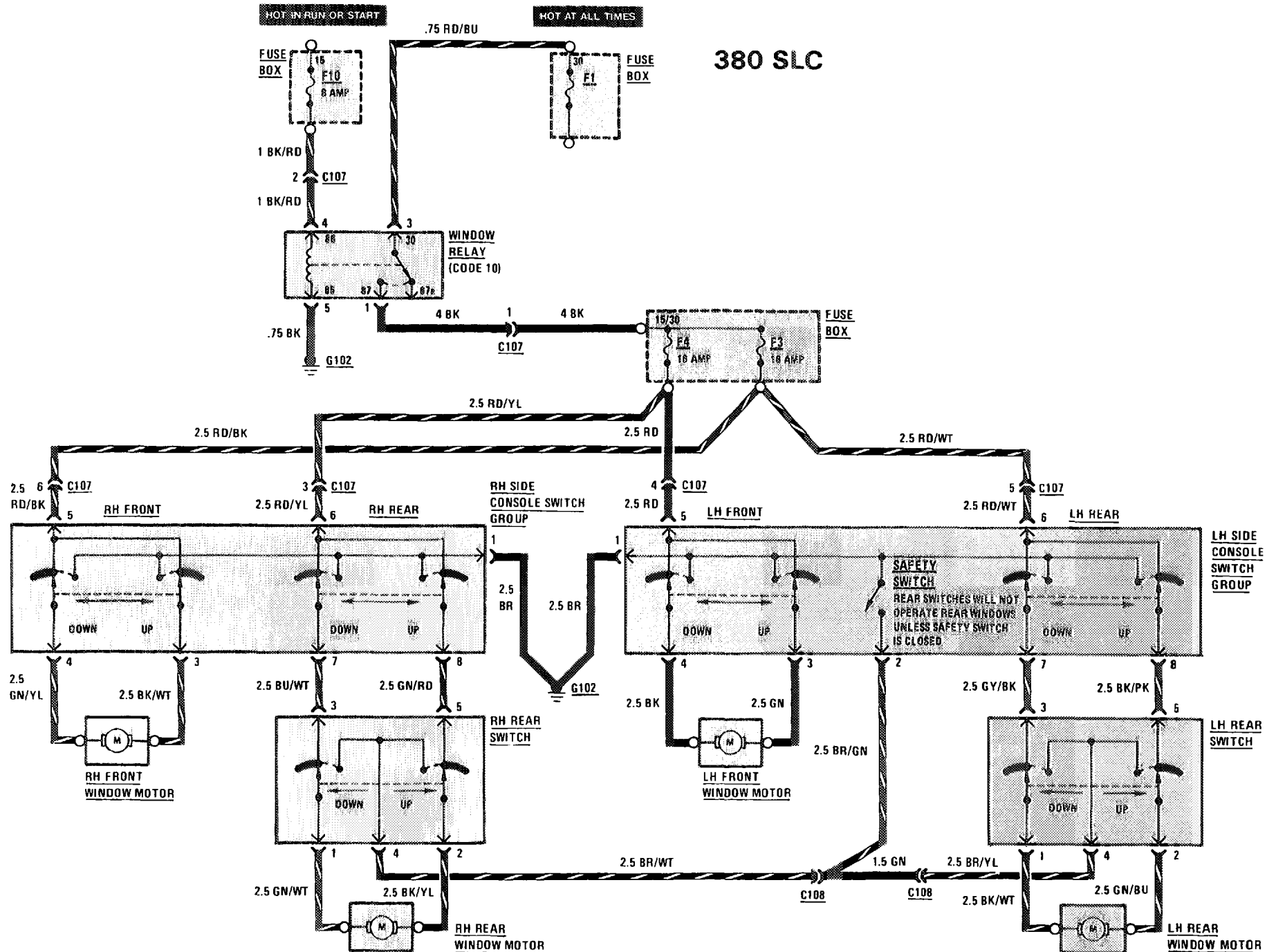


# POWER WINDOWS

(For Component Locations See Page 206)

## 380 SLC

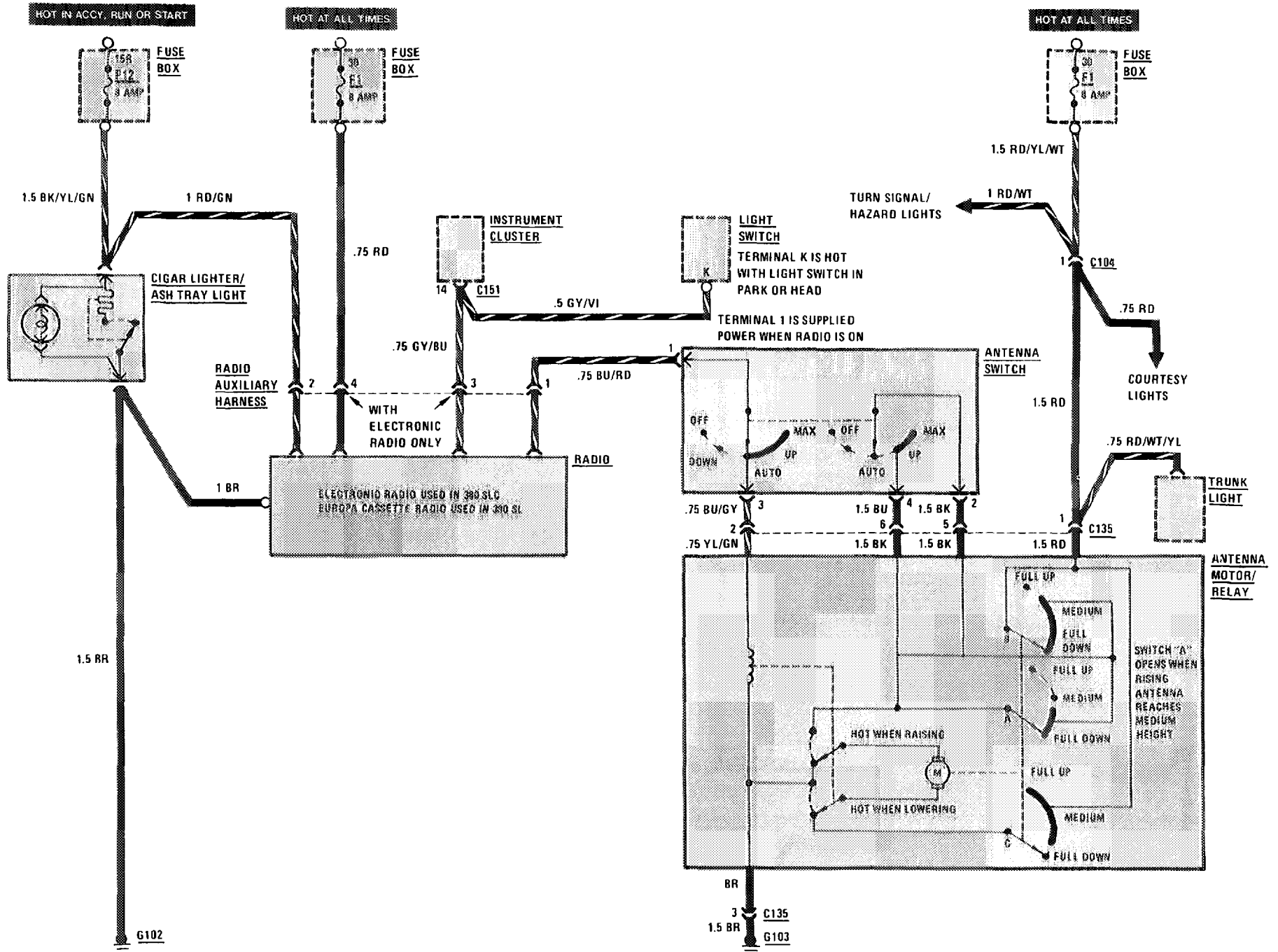
130  
380  
SL/SLC



**SAFETY SWITCH**  
REAR SWITCHES WILL NOT OPERATE REAR WINDOWS UNLESS SAFETY SWITCH IS CLOSED

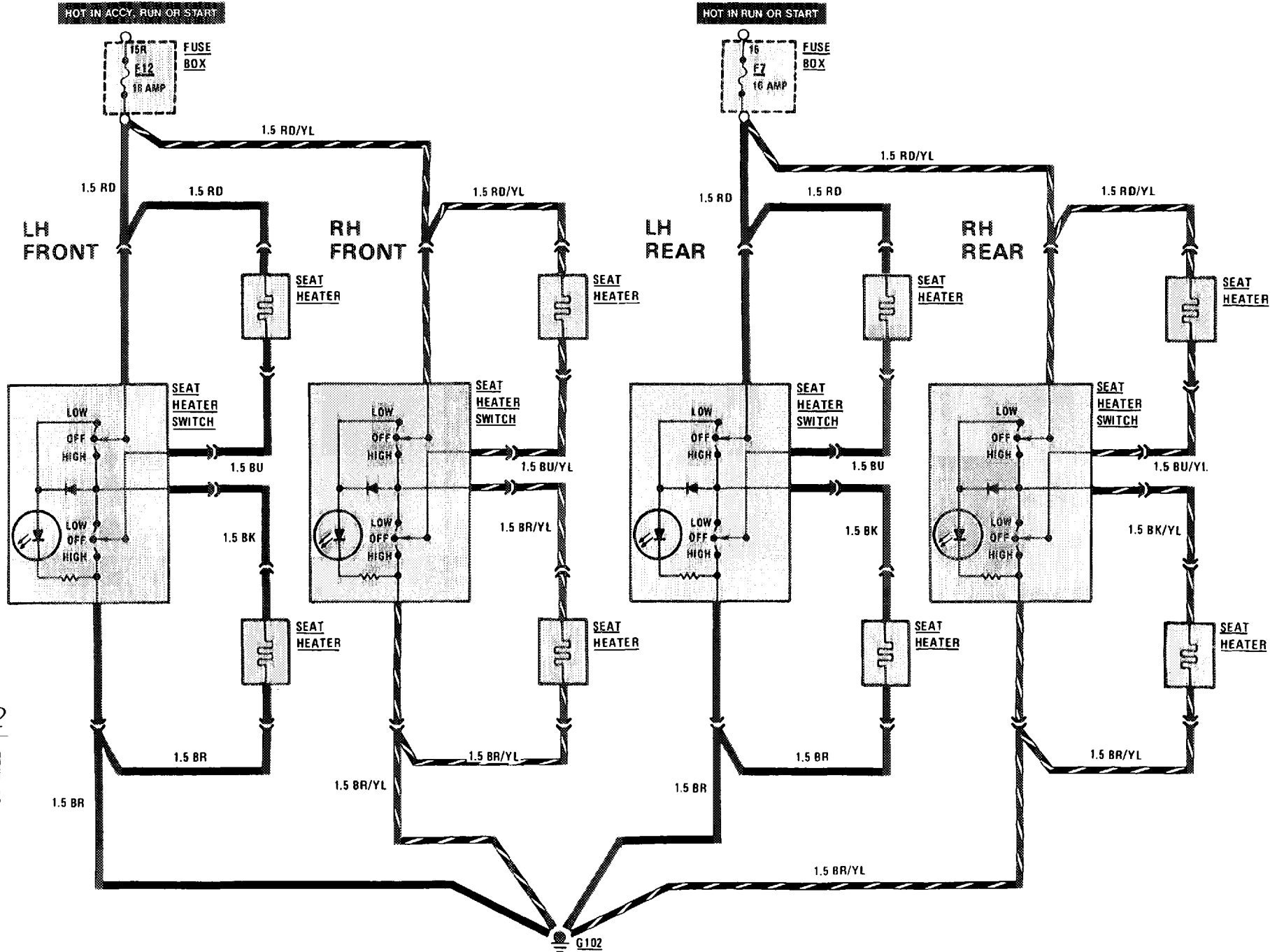
# CIGAR LIGHTER/RADIO/AUTOMATIC ANTENNA

(For Component Locations See Page 202)



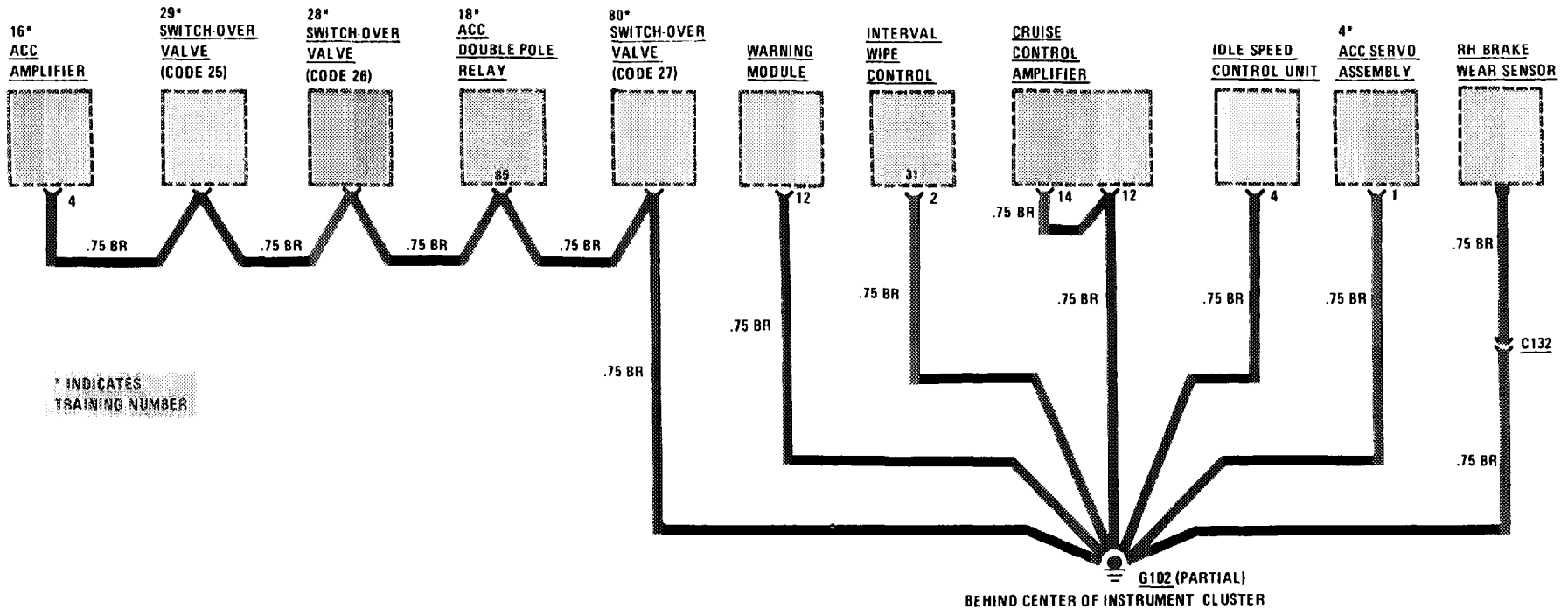
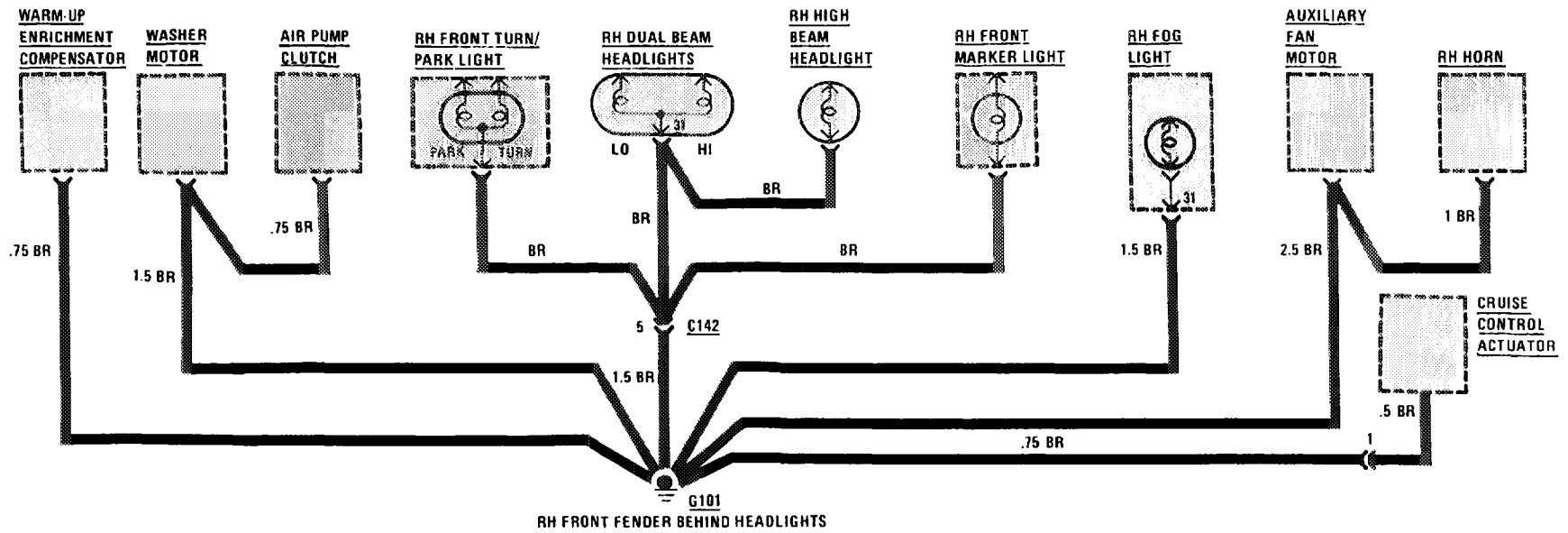
# HEATED SEATS

(For Component Locations See Page 203)



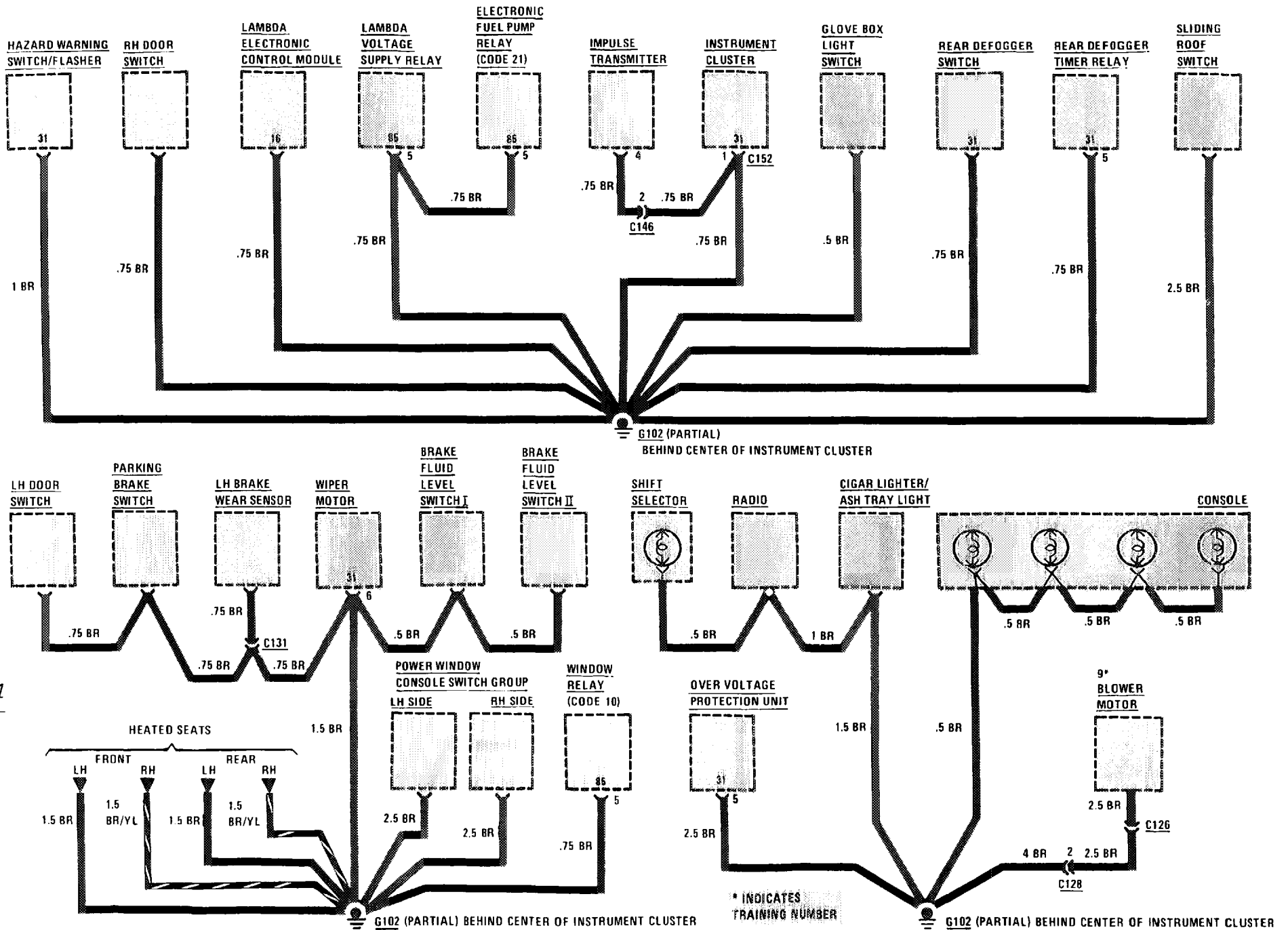
132  
380  
SL/SLC

# GROUND DISTRIBUTION



\* INDICATES TRAINING NUMBER

# GROUND DISTRIBUTION



134

**380**  
SL/SEC

# GROUND DISTRIBUTION

