

## 14-475 Checking EGR

---

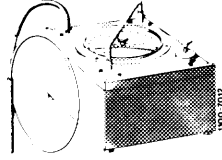
Job No. of flat rates or standard texts and flat rates data 14-500.

### Standard version

### Special tool

---

Vacuum tester



116 589 25 21 00

---

### Conventional tool

---

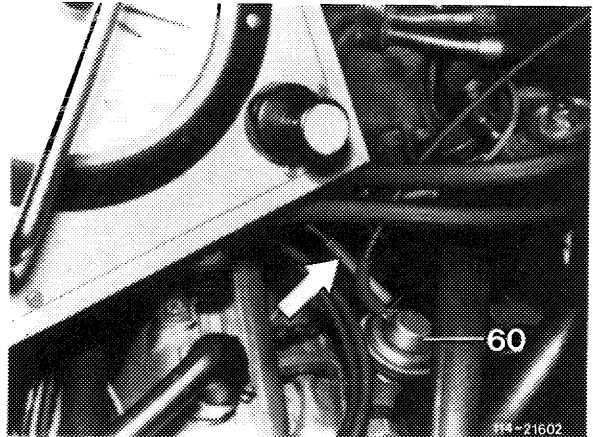
Revolution counter

---

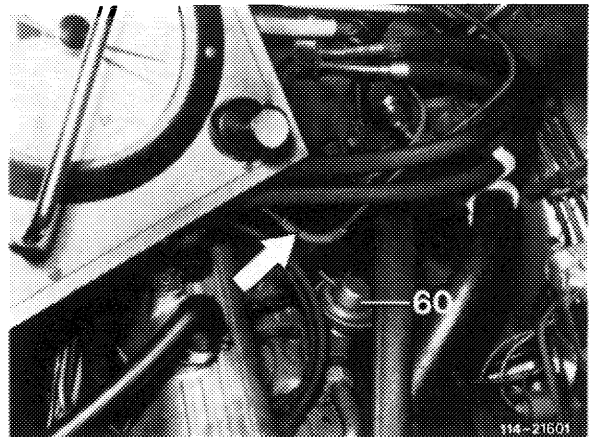
### Testing EGR

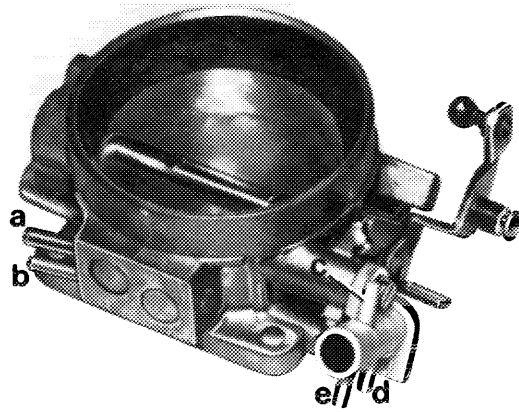
---

1 Pull vacuum line (arrow) from EGR valve (60), plug on test hose and activate with vacuum. If engine is not clearly worsening, renew EGR valve.



2 Check activation of EGR valve. Pull vacuum line (arrow) from EGR valve (60) and connect to vacuum tester. Slowly increase engine speed to approx. 3000/min. There should be no vacuum up to approx. 1800/min. Vacuum connections on throttle valve housing might be plugged in the wrong way.

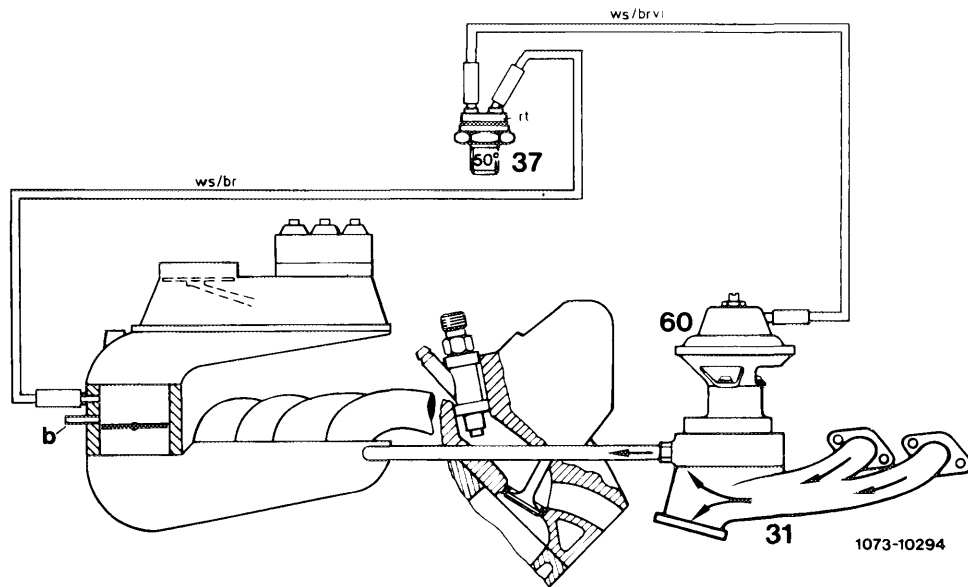
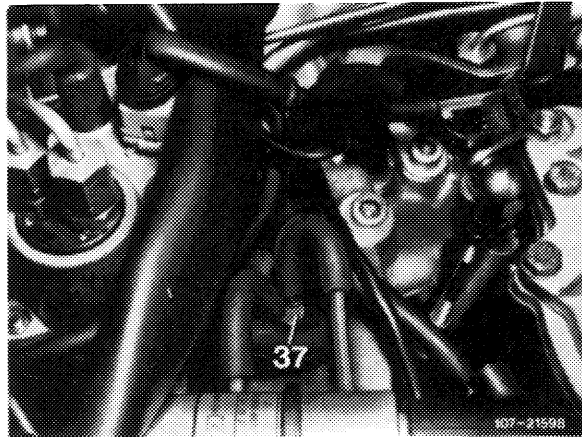




- a To thermovalve for EGR
- b To vacuum switch
- c To warm-up compensator lower chamber
- d To four-way distributor
- e To reservoir for full load enrichment

107-21700

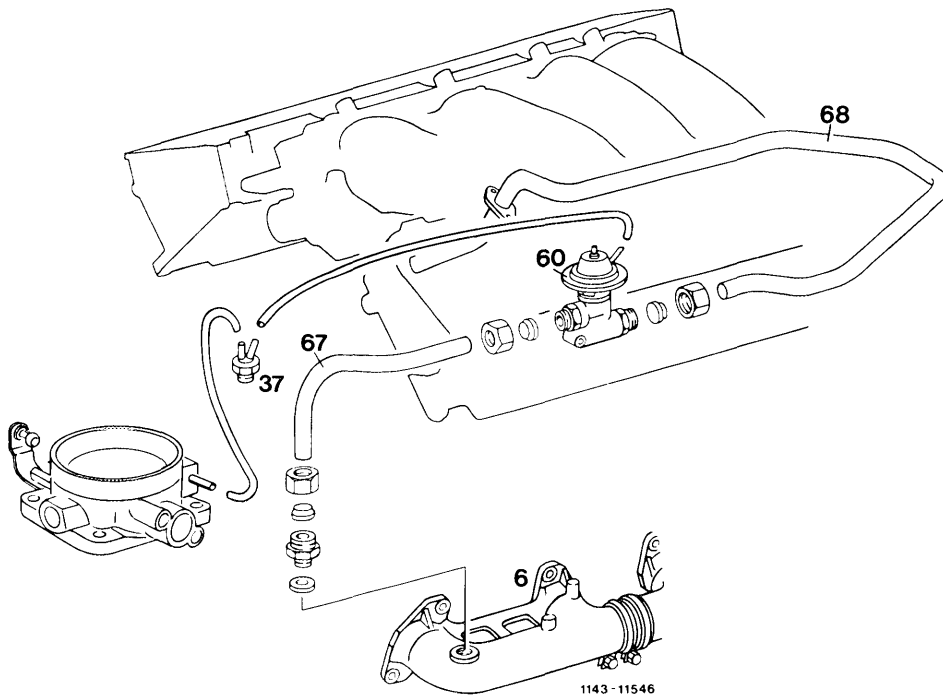
3 Test thermovalve 50 °C (37). Pull off white/brown/purple vacuum line on EGR valve and activate with vacuum. At coolant temperature < 50 °C, no passage on thermovalve.



1073-10294

- 31 Exhaust manifold
- 37 Thermovalve 50 °C
- 60 EGR valve
- b To vacuum switch

- br = brown
- rt = red
- vi = purple
- ws = white



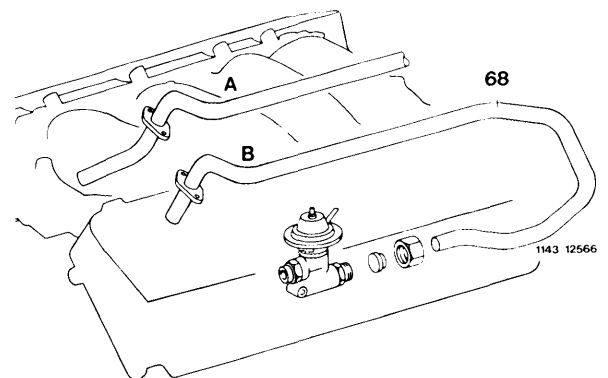
**EGR**

- 6 Exhaust manifold
- 37 Thermovalve 50 °C
- 60 EGR valve
- 67 EGR line
- 68 EGR line

**Start of series:** September 1981

**Note**

The exhaust gas recirculation line (68) has been shortened since July 1984.



- A Former design
- B Current design

The exhaust gas recirculation valve has a steel diaphragm plate (1), formerly aluminium.

**Identification:**

From date of manufacture (arrow): 4054

**Installation:** March 1984

Model	Engine	Engine end No.	
		Manual transmission	Automatic transmission
107.042	110.990	002730	005958
123.033/053/093	110.988	009461	028294
126.022/023	110.989	011200	063155
126.032/033/043	116.963	—	048510
126.036/037/044	117.963	—	049341

