

30–320 Removal, installation and adjustment of chassis regulating shaft

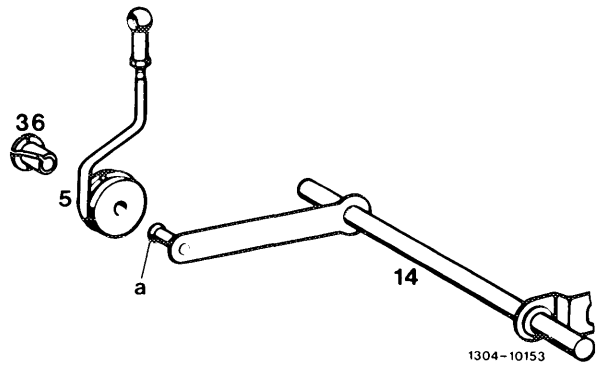
A. Model 107

Adjusting values in mm

Length of pushrod (5)	105
-----------------------	-----

Note

Since February 1981 the pushrod (5) is mounted to front wall regulating shaft (14) by means of a bearing bushing with collar (36).

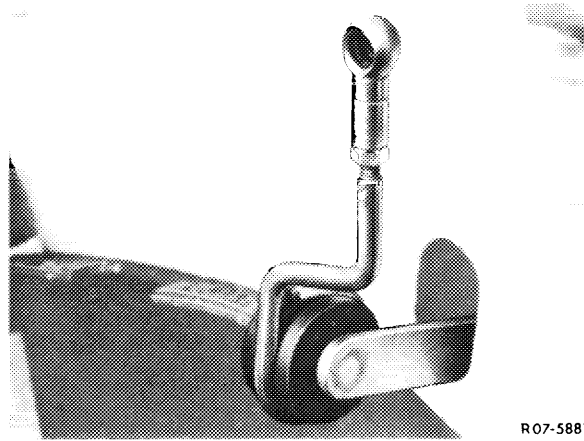


For subsequent installation proceed as follows:

- 1 Lightly grease knob bolt (a) with Molykote-Longterm 2.
- 2 Insert bearing bushing with collar (36) in pushrod (5) and force pushrod on knob bolt (a). Pay attention to correct seat of bearing bushing.

Removal

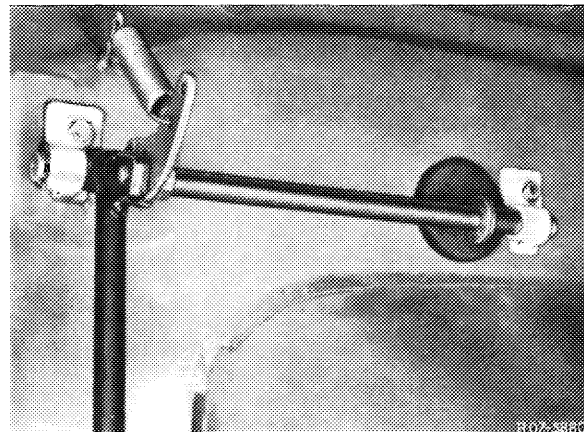
- 1 Force regulating rod with damping ring from lever of regulating shaft.
- 2 Remove accelerator pedal (30–330).
- 3 Remove heater box (83–100).



- 4 Disconnect restoring spring and screw hex. head sheet metal screws from plastic bearings.
- 5 Push out plastic bearing in upward direction and remove regulating shaft with bearing.

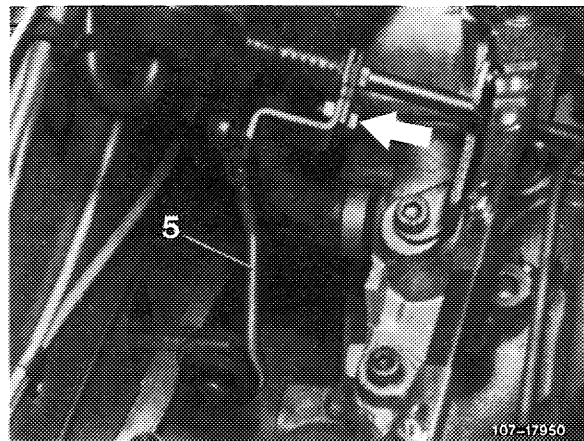
Installation

- 6 For installation proceed vice versa, while engaging restoring spring in inner hole. Grease bearing points as well as ball sockets of regulation with Molykote-Longterm 2.



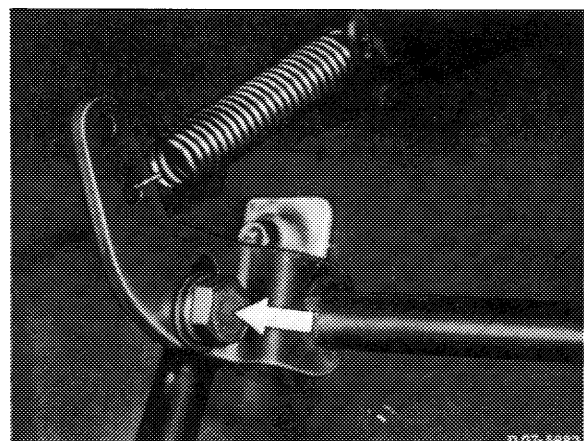
Adjustment

- 7 With engine stopped, step on accelerator pedal from inside vehicle up to stop on kickdown switch. Throttle valve lever should rest against full throttle stop. Loosen adjusting screw (arrow) if required, adjust regulating linkage in such a manner that the throttle valve lever rests against full throttle stop.

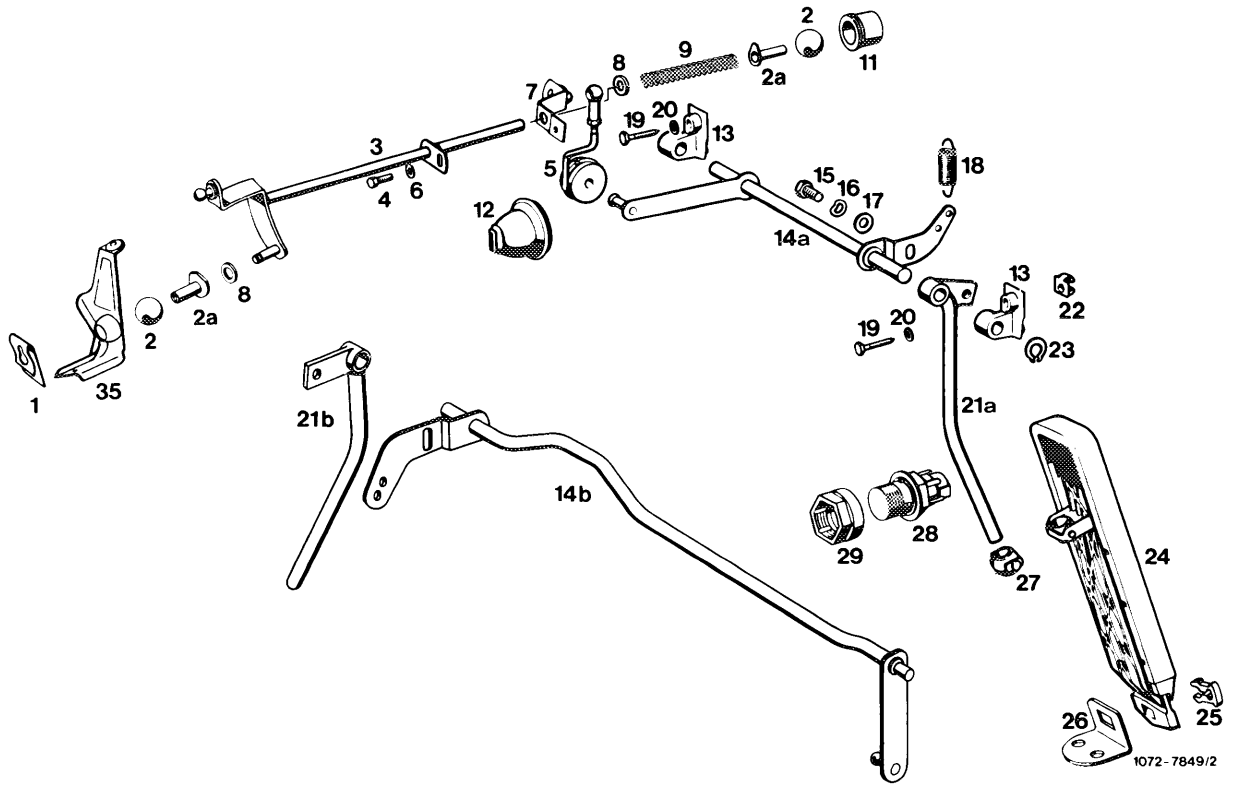


If the full throttle or idle speed stop is not attained with this adjustment, adjust pushrod (5) from longitudinal regulating shaft to accelerator pedal to specified length, measured from center of ball socket to center of damping ring.

If the full throttle or idle speed stop is not attained with the adjustment named above, loosen hex. head screw (arrow) inside vehicle, force regulating linkage up to full throttle stop on throttle valve housing and tighten hex. head screw again.



**Chassis regulation
Model 107**



- | | | | | | |
|----|---|-----|--|-----|---|
| 1 | Clip | 12 | Rubber cement | 21a | Accelerator lever for lefthand steering |
| 2 | Joint ball | 13 | Bearing | 21b | Accelerator lever for righthand steering |
| 2a | Bearing bushing | 14a | Front wall regulating shaft for lefthand steering | 22 | Cage nut |
| 3 | Longitudinal regulating shaft | 14b | Front wall regulating shaft for righthand steering | 23 | Lock |
| 4 | Hex. head screw | 15 | Hex. head screw | 24 | Accelerator pedal |
| 5 | Pushrod | 16 | Corrugated washer | 25 | Clip |
| 6 | Washer | 17 | Washer | 26 | Fastening plate |
| 7 | Guide lever for full throttle adjustment | 18 | Restoring spring | 27 | Joint |
| 8 | Plastic spacing ring | 19 | Screw | 28 | Kickdown switch |
| 9 | Compression spring | 20 | Washer | 29 | Adjusting nut |
| 11 | Bearing for longitudinal regulating shaft | | | 35 | Bearing for longitudinal regulating shaft |

B. Model 126

Adjusting values in mm

Lefthand steering

Length of pushrod (5) from longitudinal regulating shaft to accelerator pedal	222
---	-----

Righthand steering

Length of connecting rod (21) from accelerator pedal to guide lever	172
---	-----

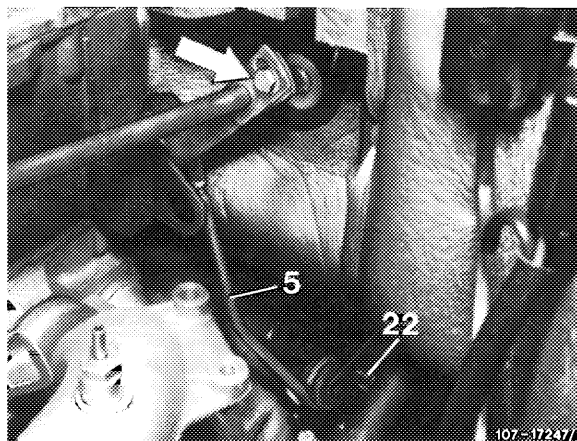
Length of connecting rod (40)	597
-------------------------------	-----

Removal

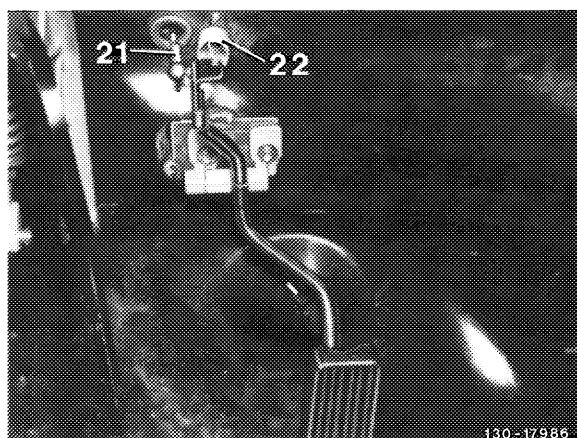
1 Disengage restoring spring (22) and force off connecting rod (5 or 21).

2 Remove accelerator pedal (30–330).

Lefthand steering

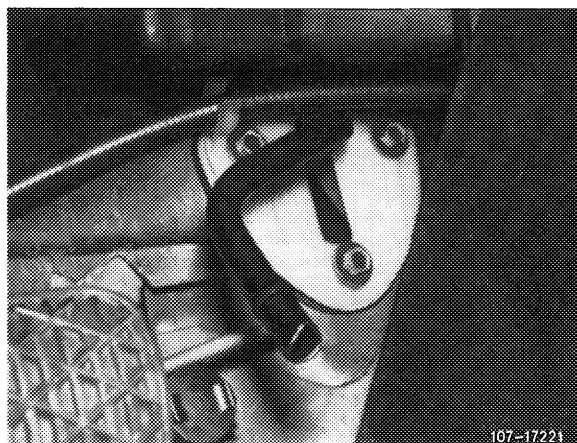


Righthand steering

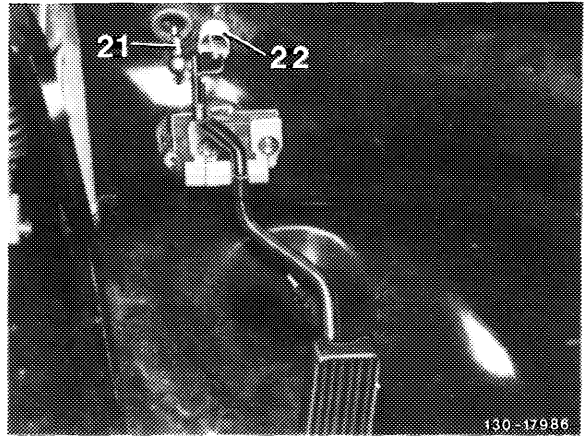


3 Unscrew fastening screws on bearing bracket, remove bearing bracket and accelerator lever.

Lefthand steering



Righthand steering

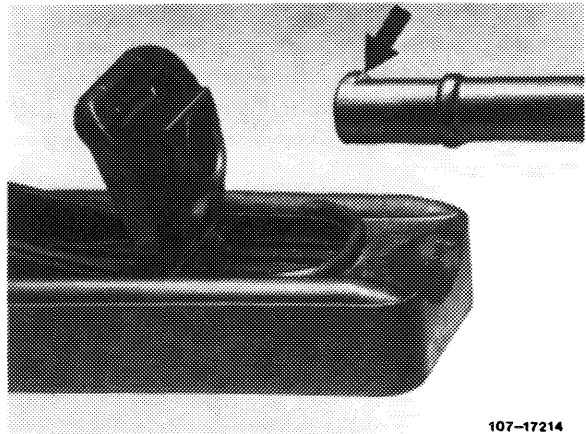


Installation

4 For installation proceed vice versa.

Grease bearing points as well as ball sockets of regulation with Molykote-Longterm 2.

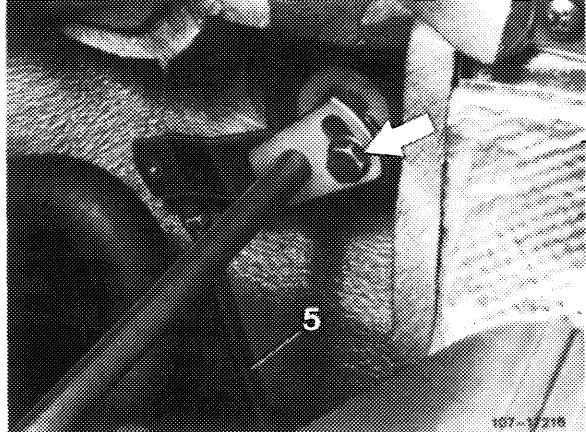
Connection from accelerator lever to accelerator pedal is maintenance-free and requires no lubrication.



Adjustment

Lefthand steering

5 With engine stopped, step on accelerator pedal from inside vehicle down to stop on kickdown switch. Throttle valve lever should rest against full throttle stop. If required, loosen adjusting screw (arrow), adjust regulating linkage in such a manner that the throttle valve lever rests against full throttle stop.

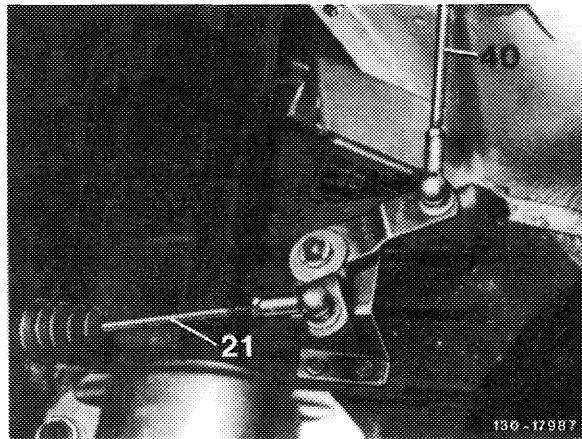


If the full throttle or idle speed stop is not attained with this adjustment, adjust pushrod (5) from longitudinal regulating shaft to accelerator pedal to specified length, measured from center of ball socket to center of damping ring.

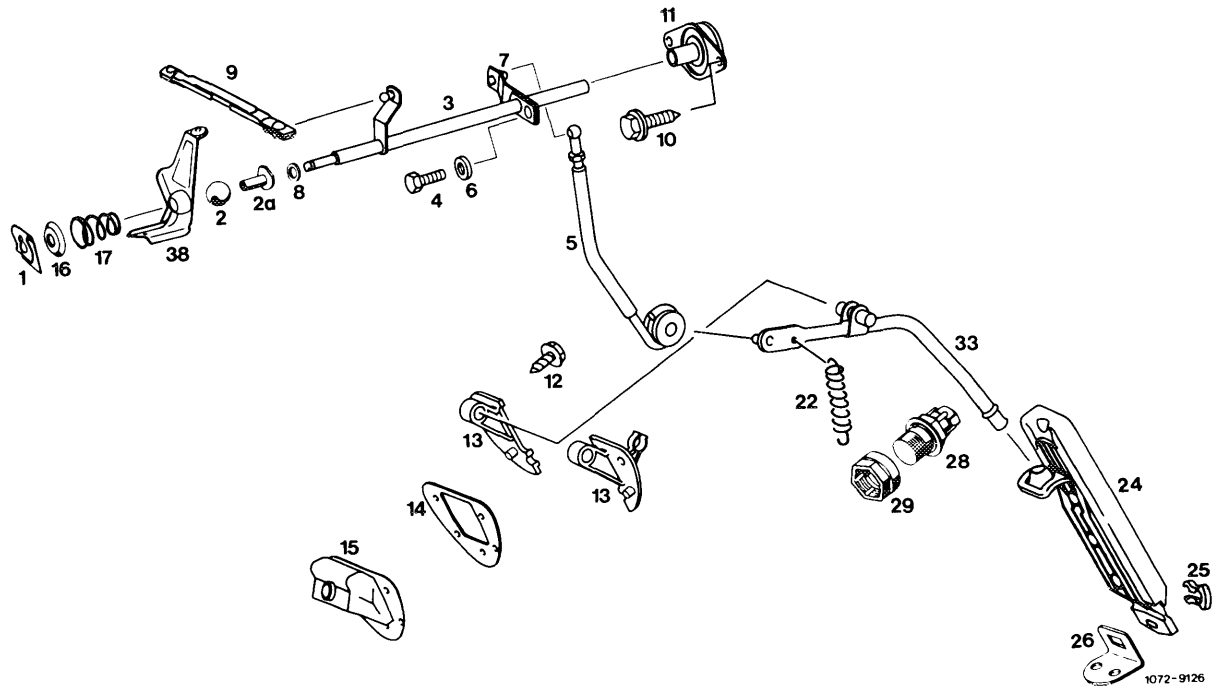
Righthand steering

6 With engine stopped, step on accelerator pedal from inside vehicle down to stop on kickdown switch. Throttle valve lever should rest against full throttle stop. If required, loosen adjusting screw (arrow), adjusting regulating linkage in such a manner that throttle valve lever rests against full throttle stop.

If the full throttle or idle speed stop is not attained with the previous adjustment, adjust connecting rod (21) from guide lever in engine compartment to accelerator pedal and connecting rod (40) to specified length, measured from center of ball socket to center of ball socket.



**Chassis regulation lefthand steering
Engine 116, 117 in model 126**

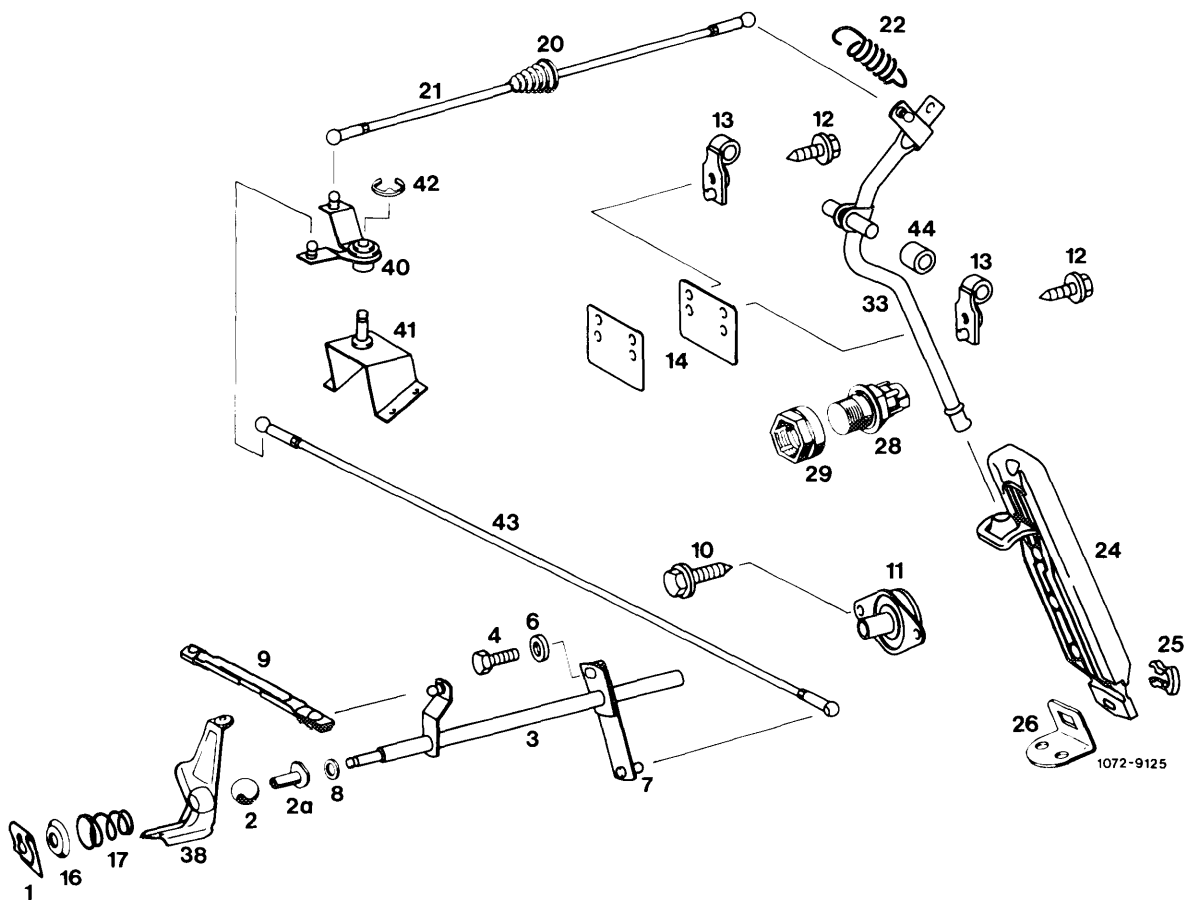


- | | | | | | |
|----|--|----|---|----|---|
| 1 | Clip | 9 | Connecting rod | 22 | Restoring spring |
| 2 | Joint ball | 10 | Hex. head screw | 24 | Accelerator pedal |
| 2a | Bearing bushing | 11 | Bearing for longitudinal regulating shaft | 25 | Clip |
| 3 | Longitudinal regulating shaft | 12 | Hex. head screw | 26 | Fastening plate |
| 4 | Hex. head screw | 13 | Bearing | 28 | Kickdown switch |
| 5 | Pushrod | 14 | Intermediate plate | 29 | Adjusting nut |
| 6 | Washer | 15 | Rubber sleeve | 33 | Accelerator lever |
| 7 | Guide lever for full throttle adjustment | 16 | Spring retainer | 38 | Bearing for longitudinal regulating shaft |
| 8 | Plastic spacing ring | 17 | Compression spring | | |

Note: Starting September 1985, the material of the joint ball (2) for the longitudinal regulating shaft has been changed.

Indication: anthracite (formerly: white)

Chassis regulation righthand steering
 Engine 116, 117 in model 126
 1st version

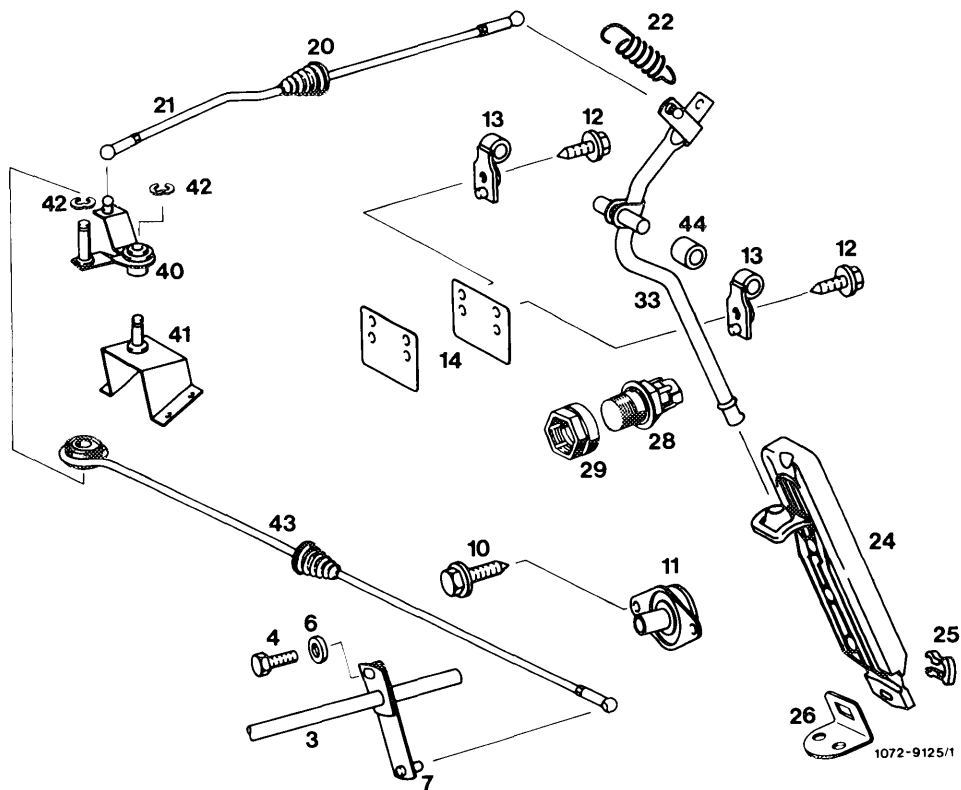


- | | | |
|--|--|--|
| 1 Clip | 11 Bearing for longitudinal regulating shaft | 25 Clip |
| 2 Joint ball | 12 Hex. head screw | 26 Fastening plate |
| 2a Bearing bushing | 13 Bearing | 28 Kickdown switch |
| 3 Longitudinal regulating shaft | 14 Intermediate plate | 29 Adjusting nut |
| 4 Hex. head screw | 16 Spring retainer | 33 Accelerator lever |
| 6 Washer | 17 Compression spring | 38 Bearing for longitudinal regulating shaft |
| 7 Guide lever for full throttle adjustment | 20 Rubber sleeve | 40 Guide lever |
| 8 Plastic spacing ring | 21 Connecting rod | 41 Bearing bracket |
| 9 Connecting rod | 22 Restoring spring | 42 Lock |
| 10 Hex. head screw | 24 Accelerator pedal | 43 Connecting rod |
| | | 44 Spacing sleeve |

Note: Starting September 1985, the material of the joint ball (2) for the longitudinal regulating shaft has been changed.

Indication: anthracite (formerly: white)

Chassis regulation righthand steering
Engine 116, 117 in model 126
2nd version



- | | | | | | |
|----|---|----|--------------------|----|-------------------|
| 3 | Longitudinal regulating shaft | 14 | Intermediate plate | 33 | Accelerator lever |
| 4 | Hex. head screw | 20 | Rubber sleeve | 40 | Guide lever |
| 6 | Washer | 21 | Connecting rod | 41 | Bearing bracket |
| 7 | Guide lever for full throttle adjustment | 22 | Restoring spring | 42 | Lock |
| 10 | Hex. head screw | 24 | Accelerator pedal | 43 | Connecting rod |
| 11 | Bearing for longitudinal regulating shaft | 25 | Clip | 44 | Spacing sleeve |
| 12 | Hex. head screw | 26 | Fastening plate | | |
| 13 | Bearing | 28 | Kickdown switch | | |