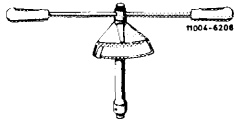


47-710 Removal and installation of immersion tube transmitter

A. Immersion tube transmitter with rubber or cork seal (model 107.04)

Tightening torques	Nm	(kpcm)
Fastening nuts for immersion tube transmitter	3-4	(30-40)

Special tool

Torque wrench		000 589 67 21 00
---------------	--	------------------

Note

Immersion tube transmitter seals which were formerly glued-in, can no longer be replaced. In such a case, install a screw-type immersion tube transmitter for fuel tank (section B).

Modified seal

Since October 1971 the cork seal 110 471 01 80 between immersion tube transmitter and fuel tank is glued-in by means of a 2-component glue.

Production data of seals used up to now

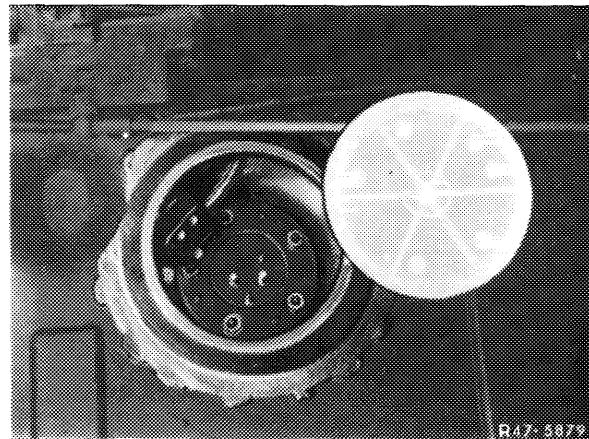
Model	Designation	Chassis end no.
107.043	cork seal without glue	start of production -- 001599
107.043	rubber seal	001600-003656
107.044 (USA)	rubber seal	start of production -- 001340
107.043	cork seal with glue	003657-009410
107.044 (USA)	cork seal with glue	001341-009072

The rubber seal 107 471 01 80 installed on model 107.043 from chassis end no. 001600 to 003656, as well as on model 107.044 from start of production to chassis end no. 001340 is now invalid and may no longer be used.

Replacement of seal

In the event of repairs, use **cork seal 110 471 01 80 only** and install by means of a 2-component glue. For this repair job the vehicle should not be fully fueled, since this alone will guarantee that the cork seal with the 2-component glue will not come into contact with the fuel.

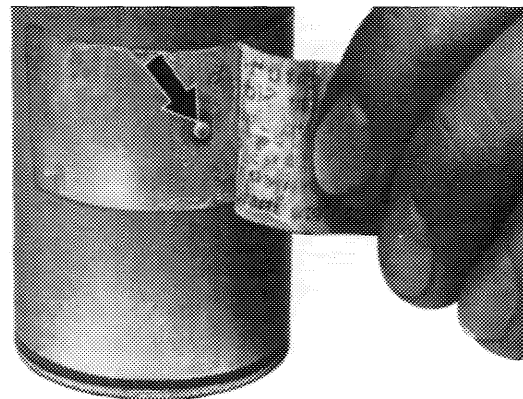
- 1 Remove coupe top and unfold roadster top.
- 2 Remove plastic cover, pull cable plug connection from immersion tube transmitter and secure against slipping behind fuel tank. Remove immersion tube transmitter, also remove loose cork or rubber seal.



- 3 Thoroughly clean fuel tank in range of immersion tube transmitter.
- 4 Check flange of immersion tube transmitter for distortion and dents at fastening bores. Make sure that dented or distorted immersion tube transmitters are replaced.

When installing a new immersion tube transmitter, remove locking pin installed for shipment.

- 5 Completely fill hardener from plastic bottle into can with „Epple 50“ glue and mix well. **Do not mix smaller quantities, since the mixing ratio must be accurately met.**



- 6 Coat cork seal 110 471 01 80 at bottom approx. 1 mm thick with mixed glue.
- 7 Set cork seal on tank in such a manner that the notch in seal points toward the rear.
- 8 Also coat top of seal and stud with glue 1 mm thick.

9 Insert immersion tube transmitter in such a manner that the brass pin for the cable plug – seen in driving direction – faces forward.

10 To prevent any distortion of immersion tube transmitter flange while tightening, mount 5 washers A 5, DIN 9021 NTS and tighten the fastening nuts of the immersion tube transmitter **uniformly and cross-wise**.

11 Mount cable plug, insert plastic cover, set up roadster top or coupe top.

12 Leave vehicle in place for 3 hours, then fill up with fuel. During the curing period of 3 hours the glue should not come into contact with fuel.

The mixed glue **can be processed** for approx. **30 minutes**. Any glue not used after that time is useless.

The 2-component glue „Epple 50“ including the hardener can be ordered directly from

Messrs.

E. Epple & co.

Seidenstraße 55

7000 Stuttgart 1

General representatives in export countries can order this glue including the hardener under the designation „Epple 50“ from ET Esslingen-Mettingen. The glue has no spare part number.

B. Immersion tube transmitter with O-ring (model 107, 116)

Tightening torques

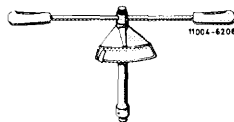
Nm (kpm)

Hex closing plug for immersion tube transmitter
or screw-type immersion tube transmitter

20–30 (2–3)

Special tool

Torque wrench

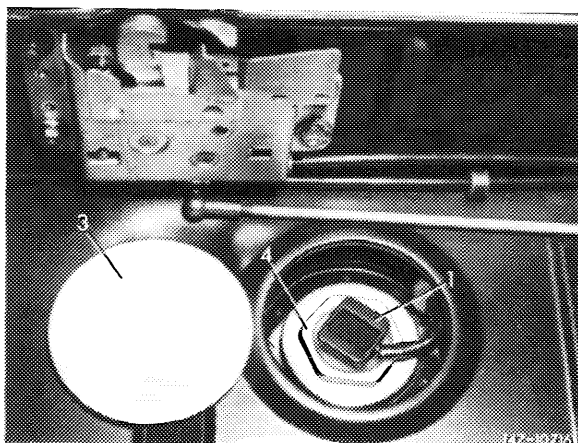


000 589 67 21 00

Removal

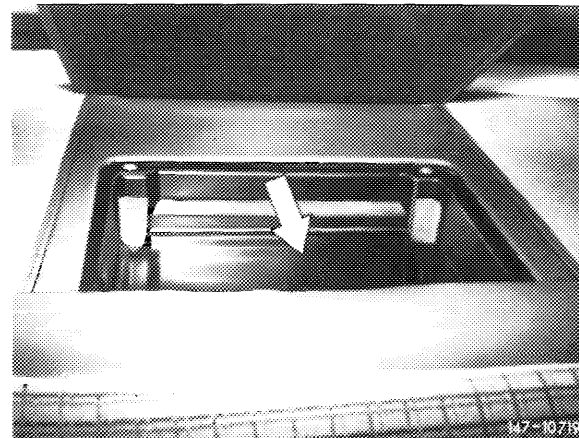
1 Remove hard top on model 107.04, open top lock and unfold top.

2 Remove top cover (3).



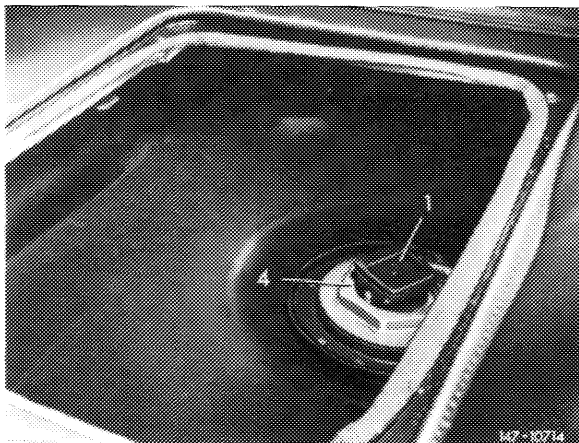
Model 107.04

3 On models 107.02 and 116, remove first aid kit and plastic shell (arrow).



4 Pull plug (1) from immersion tube transmitter and protect against sliding off by means of a wire.

5 Unscrew hex closing plug (4) and remove immersion tube transmitter.

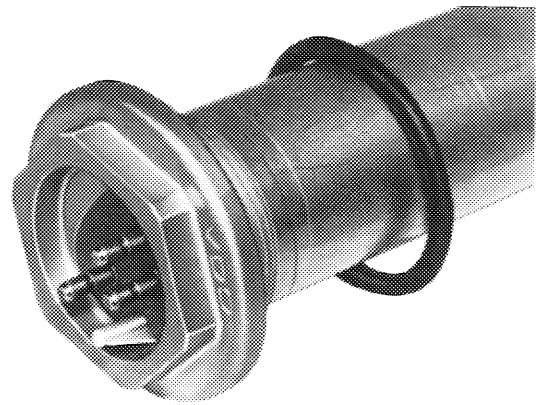


Immersion tube transmitters of the latest version are screwed directly into fuel tank.

Since approx. August 1976 these vehicles are provided with fuel tanks having directly screwed-in immersion tube transmitters.

Start of production

Model	Starting chassis end no.
107.023	011154
107.024	014504
107.043	012556
107.044	034421
116.028/029	035707
116.032/033	054893 (054742 (USA))



147-10810

Installation

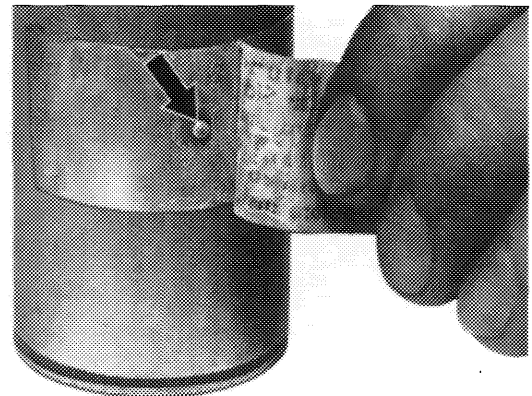
For installation proceed vice versa and observe the following:

- a) The spare parts stockroom has two different versions of immersion tube transmitters. When replacing transmitters, make sure to exchange like for like.
- b) Use new O-ring.
- c) Remove locking pin (arrow) prior to inserting immersion tube transmitter.
- d) Insert immersion tube transmitter in such a manner that the locking cam engages in recess of fuel tank or that brass locating pin for electric plug points toward the rear in relation to driving direction.

The above is no longer required for latest version of immersion tube transmitter.

Note: If an immersion tube transmitter with locking cam is installed in a fuel tank without recess, remove locking cam.

- e) Check function of fuel gauge.



107-10702