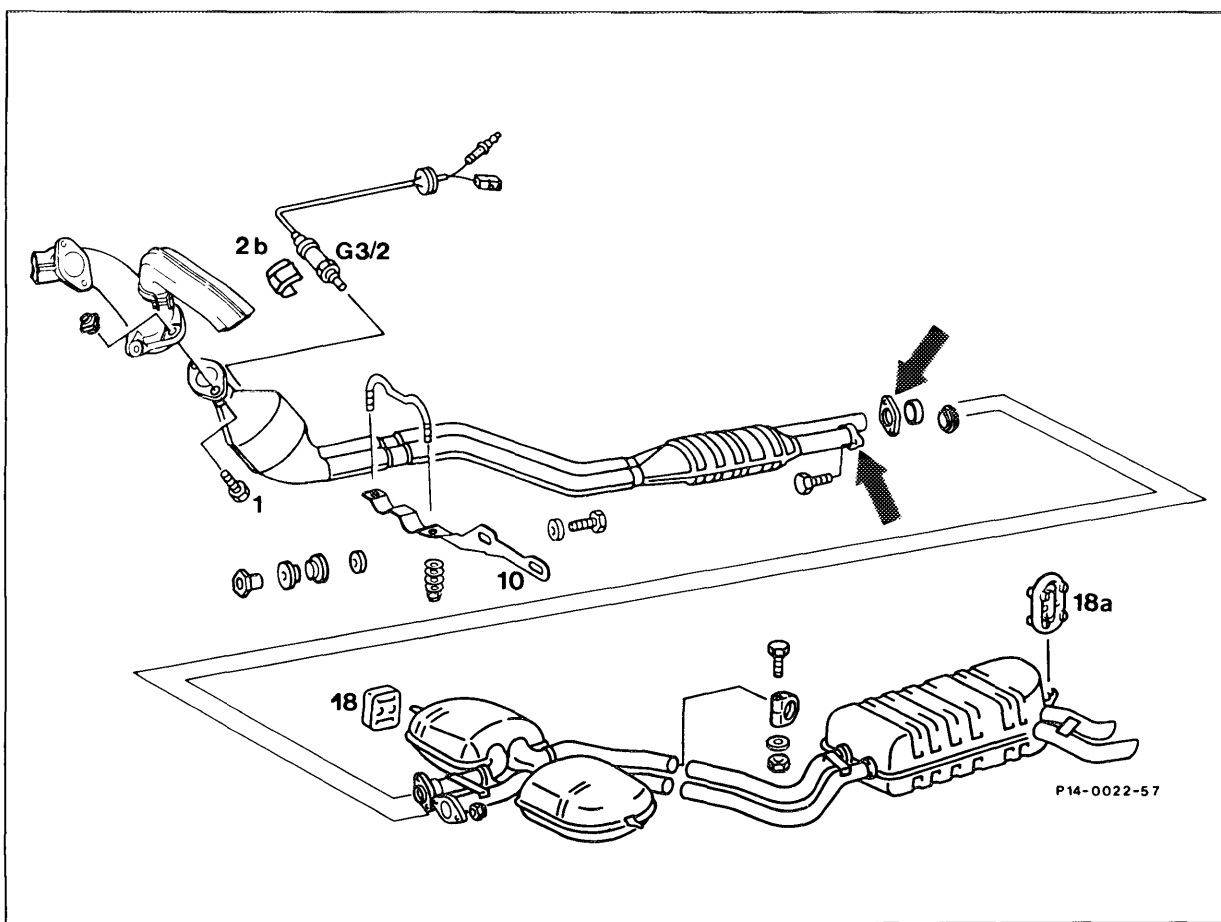


14-200 Removal, reinstallation of catalytic converter



- |  |   |
|--|---|
| Cover (2b) .....   | remove, reinstall. Observe installation position.   |
| Oxygen sensor (G3/2) .....                                 | remove, reinstall (14-480).   |
|  | <b>Note</b>   |
|  | Before installing the oxygen sensor, coat the thread with the hot lubricating paste part No. 000 989 88 51. |
| Screws (1) of flange connection on exhaust manifolds ..... | unscrew, screw on.  |
| Lateral support (10) on transmission .....                 | remove, reinstall.  |
| Rubber rings (18 and 18a) for exhaust system ...           | disconnect, reconnect.  |
| Exhaust system .....                                       | completely remove, reinstall (49-100).  |
| Flange connections (arrows) .....                          | loosen and remove catalytic converter.  |